

ARKANSAS[®]

VOLLEYBALL

COMMUNICATIONS CONTACT: ZACH LAWSON | E: zlawson@uark.edu | O: 479/575-7089 | c: 479/595-2358

RESULTS/SCHEDULE

OVERALL: 5-18 / SEC: 3-8
H: 3-6 / A: 1-8 / N: 1-4

AUGUST

| | | |
|----|---------------------|--------|
| 26 | at #14 Illinois! | L, 3-0 |
| 27 | vs. Missouri State! | L, 3-0 |
| 27 | vs. Xavier! | L, 3-1 |

SEPTEMBER

| | | |
|----|----------------------------|--------|
| 2 | vs. Maryland# [CST] | L, 3-1 |
| 2 | vs. Chicago State# [CST] | W, 3-1 |
| 3 | at #4 Kansas# [ESPN3] | L, 3-2 |
| 8 | at New Mexico% | L, 3-1 |
| 9 | vs. #1 Nebraska% | L, 3-0 |
| 10 | vs. Montreal% (exhibition) | W, 3-1 |
| 16 | Southern Miss^ | L, 3-1 |
| 16 | #25 Kansas State^ | L, 3-0 |
| 17 | UMKC^ | W, 3-1 |
| 20 | at Oral Roberts [CST] | L, 3-0 |
| 25 | at LSU* [SECN+] | W, 3-0 |
| 30 | Missouri* [SEC Network] | L, 3-0 |

OCTOBER

| | | |
|----|----------------------------------|--------|
| 2 | at Ole Miss* [SEC Network] | L, 3-2 |
| 5 | Texas A&M* [ESPNU] | L, 3-0 |
| 9 | at Missouri* [SECN+] | L, 3-0 |
| 14 | at #23 Kentucky* | L, 3-0 |
| 16 | at Tennessee* | L, 3-1 |
| 21 | Alabama* [SECN+] | L, 3-0 |
| 23 | Auburn* [SECN+] | L, 3-1 |
| 26 | Mississippi State* [SEC Network] | W, 3-1 |
| 30 | Georgia* [SEC Network] | W, 3-2 |

NOVEMBER

| | | |
|----|---------------------------------------|--------|
| 6 | at Alabama* [SEC Network] | 1 p.m. |
| 9 | #18 Kentucky* [SEC Network] | 7 p.m. |
| 13 | Tennessee* [SECN wildcard] | 3 p.m. |
| 18 | at Georgia* | 6 p.m. |
| 20 | at Mississippi State* [SECN wildcard] | 3 p.m. |
| 23 | at South Carolina* | 6 p.m. |
| 26 | #6 Florida* [SECN+] | 1 p.m. |

DECEMBER

| | | |
|---------|---------------------|-----|
| 2-3 | NCAA 1st/2nd Rounds | TBA |
| 9-10 | NCAA Regional Round | TBA |
| 15 & 17 | NCAA Championship | TBA |

! - Illini Classic | # - Kansas Invitational |
% - Lobo Classic | ^ - Arkansas Invitational |
* - SEC match

All times Central and subject to change
All home matches played at Barnhill Arena (8,500)



NEXT THREE

CONFERENCE SEASON

ALABAMA CRIMSON TIDE

RECORD: 15-10, 4-8 SEC
RANK: NR
ALL-TIME SERIES: ARK leads 32-12
LAST MEETING: ALA, 3-0 (10/21/16)



KENTUCKY WILDCATS

RECORD: 17-5, 10-1 SEC
RANK: 18
ALL-TIME SERIES: UK leads 22-15
LAST MEETING: UK, 3-0 (10/14/16)



TENNESSEE VOLUNTEERS

RECORD: 15-8, 5-5 SEC
RANK: NR
ALL-TIME SERIES: UT, 19-18
LAST MEETING: UT, 3-1 (10/16/16)



RAZORBACK NOTES

ALL-TIME SERIES VS ALABAMA

Arkansas owns a 32-12 advantage in its all-time series with Alabama. However, the Crimson Tide have won the last five meetings including a straight-set win in Fayetteville earlier this season. Arkansas is 12-7 against Alabama in matches played in Tuscaloosa.

LAST TIME OUT

For the 13th time since 2000, Arkansas rallied from a 0-2 match deficit and beat Georgia (Oct. 30). Danielle Harbin had a career-high 27 kills and Okiana Valle matched her season high with 28 digs in the win. The Razorbacks saved three match points in the third set.

HARBIN REWARDED

Senior co-captain Danielle Harbin was named SEC Offensive Player of the Week after averaging 5.56 kills per set, 3.33 digs per set and 0.78 blocks per set to go along with two double-double performances. She totaled 50 kills in wins over Mississippi State and Georgia.

THE CLOSER

Senior Barbara Dapic was clutch at the end of sets three and four against Georgia (Oct. 30). She put down the final three kills in third and had the final two kills in the fourth. Dapic finished the match with 12 kills included the 500th of her career.

COMING UP ACES

Arkansas tallied a season-high 10 service aces in its five-set win over Georgia (Oct. 30) including a career-best six

STATISTICAL BREAKDOWN

ARKANSAS VS ALABAMA

| | | |
|-------|-------------|-------|
| .185 | Hitting % | .231 |
| 11.77 | Kills/Set | 13.49 |
| 11.10 | Assists/Set | 12.44 |
| 13.39 | Digs/Set | 14.10 |
| 2.12 | Blocks/Set | 1.75 |
| 0.96 | Aces/Set | 1.03 |

ARKANSAS VS #18 KENTUCKY

| | | |
|-------|-------------|-------|
| .185 | Hitting % | .263 |
| 11.77 | Kills/Set | 14.40 |
| 11.10 | Assists/Set | 13.15 |
| 13.39 | Digs/Set | 14.00 |
| 2.12 | Blocks/Set | 2.86 |
| 0.96 | Aces/Set | 1.22 |

ARKANSAS VS TENNESSEE

| | | |
|-------|-------------|-------|
| .185 | Hitting % | .271 |
| 11.77 | Kills/Set | 13.96 |
| 11.10 | Assists/Set | 13.02 |
| 13.39 | Digs/Set | 14.09 |
| 2.12 | Blocks/Set | 2.30 |
| 0.96 | Aces/Set | 1.23 |

aces from Rachel Rippee. The freshman setter was at the line for the final three points of the match including an ace on Arkansas' first match point.

600 FOR HARBIN

With her 15th of 23 kills against Mississippi State (Oct. 26), Danielle Harbin became the 25th player in program history to reach 600 career kills. She has double figures in 18 of 23 matches and ranks second in the SEC and 34th in the NCAA at 4.23 kills per set.

IN THE MIDDLE

Senior middle blockers Breana Jones and Ana Sofia Jusino combined for 20 kills and 12 total blocks against Mississippi State (Oct. 26). In 30 combined swings, the pair committed just one error for a .633 hitting percentage.

JONES TURNS IT ON

Breana Jones posted her eighth SEC outing with seven or more kills with 11 kills against Georgia (Oct. 30). She has hit .333 or higher in seven of those eight matches. Jones is hitting .385 against SEC opponents.

RIPPEE TIES CAREER HIGH

Freshman Rachel Rippee tied her career high with 13 digs against Auburn (Oct. 23). She dished out 44 assists in the match to complete her team-leading fifth double-double.

VALLE CRACKS TOP 20

With her fourth dig vs No. 23 Kentucky (Oct. 14), sophomore libero Okiana Valle moved into the program's top 20

WHAT HAPPENS WHEN...

| | |
|---------------------|------|
| OVERALL | 5-18 |
| SEC | 3-8 |
| HOME | 3-6 |
| AWAY | 1-8 |
| NEUTRAL | 1-4 |
| VS RANKED OPPONENTS | 0-5 |

BY SETS

| | |
|----------------------|------|
| THREE SETS | 1-10 |
| FOUR SETS | 3-6 |
| FIVE SETS | 1-2 |
| WIN FIRST SET | 1-0 |
| LOSE FIRST SET | 4-18 |
| WIN SECOND SET | 4-5 |
| LOSE SECOND SET | 1-13 |
| WIN FIRST TWO SETS | 1-0 |
| LOSE FIRST TWO SETS | 1-12 |
| SPLIT FIRST TWO SETS | 3-6 |

STATISTICAL

| | |
|----------------------------|------|
| MORE KILLS THAN OPPONENT | 2-4 |
| FEWER KILLS THAN OPPONENT | 1-14 |
| KILLS ARE TIED | 1-0 |
| MORE DIGS THAN OPPONENT | 4-6 |
| FEWER DIGS THAN OPPONENT | 1-12 |
| DIGS ARE TIED | 0-0 |
| MORE BLOCKS THAN OPPONENT | 4-6 |
| FEWER BLOCKS THAN OPPONENT | 1-12 |
| BLOCKS ARE TIED | 0-0 |
| MORE ACES THAN OPPONENT | 3-1 |
| FEWER ACES THAN OPPONENT | 1-14 |
| ACES ARE TIED | 1-3 |
| HIGHER HITTING PCT | 5-1 |
| LOWER HITTING PCT | 0-17 |
| HITTING PCT TIED | 0-0 |

HITTING PERCENTAGE

| | |
|----------------|-----|
| .400 OR BETTER | 0-0 |
| .300-.399 | 3-0 |
| .200-.299 | 1-6 |
| .100-.199 | 1-8 |
| .000-.099 | 0-4 |
| NEGATIVE | 0-0 |

OPPONENT HITTING PERCENTAGE

| | |
|----------------|------|
| .400 OR BETTER | 0-1 |
| .300-.399 | 0-4 |
| .200-.299 | 2-12 |
| .100-.199 | 3-1 |
| .000-.099 | 0-0 |
| NEGATIVE | 0-0 |

BY DAY

| | |
|-----------|-----|
| TUESDAY | 0-1 |
| WEDNESDAY | 1-2 |
| THURSDAY | 0-1 |
| FRIDAY | 1-7 |
| SATURDAY | 1-3 |
| SUNDAY | 2-4 |

BY MONTH

| | |
|-----------|-----|
| AUGUST | 0-3 |
| SEPTEMBER | 3-8 |
| OCTOBER | 2-7 |
| NOVEMBER | 0-0 |
| DECEMBER | 0-0 |

STARTERS: MATCH-BY-MATCH

at #14 Illinois
 vs. Missouri State
 vs. Xavier
 vs. Maryland
 vs. Chicago State
 at #4 Kansas
 at New Mexico
 vs. #1 Nebraska
 vs. *Montreal (exhibition)*
 Southern Miss
 #25 Kansas State
 UMKC
 at Oral Roberts
 at LSU*
 Missouri*
 at Ole Miss*
 Texas A&M*
 at Missouri*
 at #23 Kentucky*
 at Tennessee*
 Alabama*
 Auburn*
 Mississippi State*
 Georgia*
 at Alabama*
 Kentucky*
 Tennessee*
 at Georgia*
 at Mississippi State*
 at South Carolina*
 Florida*

in career digs. She has nine matches this season with 15 or more digs including five 20+ performances. Valle is fourth in the SEC at 4.07 digs per set.

BUILDING BLOCKS

With a season-high eight total blocks at Tennessee (Oct. 16), Ana Sofia Jusino became the 15th player in program history with 300 career blocks. She has 10 matches this season with four or more total blocks.

CAREER HIGH FOR ROBINSON

In response to her second-career start, freshman Reagan Robinson put down nine kills at Missouri (Oct. 9). She replaced her previous best of seven kills off the bench against Kansas State (Sept. 16).

IT'S A FIRST

Senior co-captain Danielle Harbin had 22 kills and a career-high 10 digs against Ole Miss (Oct. 2) for the first double-double of her career. Including a career-high 18 digs against Mississippi State (Oct. 26), Harbin has seven or more digs in eight of the last nine matches.

SEASON HIGH FOR DAPIC

Senior Barbara Dapic put down a season-high 14 kills in a five setter at Ole Miss (Oct. 2). In the process, she posted a .409 hitting percentage against the Rebels. Dapic has four matches this year with 10 or more kills.

A GOOD (SEC) START

With a win over LSU (Sept. 25), Arkansas has won its last four SEC openers. Overall, the Razorbacks are 14-9 in SEC openers and improved to 28-18 against LSU.

SEASON-HIGH TEAM EFFICIENCY

Arkansas opened SEC play with a season-best .374 hitting percentage in a road sweep of LSU (Sept. 25). The Razorbacks had a season-low 10 attack errors in the match.

Rippee, Jones, Voelzke, Ortiz, Dapic, Jusino, Valle (L)
 Rippee, Jones, Harbin, Voelzke, Dapic, Jusino, Valle (L)
 Jones, Harbin, Wohlschlaeger, Voelzke, Dapic, Jusino, Valle (L)
 Jones, Harbin, Wohlschlaeger, Voelzke, Dapic, Jusino, Valle (L)
 Jones, Harbin, Wohlschlaeger, Voelzke, Dapic, Jusino, Valle (L)
 Jones, Harbin, Wohlschlaeger, Voelzke, Dapic, Jusino, Valle (L)
 Jones, Harbin, Wohlschlaeger, Voelzke, Dapic, Jusino, Valle (L)
 Rippee, Jones, Harbin, Guitron, Voelzke, Jusino, Valle (L)
 Rippee, Jones, Harbin, Guitron, Voelzke, Jusino, Valle (L)
 Rippee, Jones, Harbin, Voelzke, Dapic, Jusino, Valle (L)
 Rippee, Jones, Harbin, Voelzke, Ortiz, Dapic, Jusino, Valle (L)
 Rippee, Jones, Harbin, Voelzke, Dapic, Jusino, Valle (L)
 Rippee, Jones, Harbin, Voelzke, Ortiz, Jusino, Valle (L)
 Rippee, Jones, Harbin, Robinson, Voelzke, Jusino, Valle (L)
 Rippee, Jones, Harbin, Voelzke, Ortiz, Jusino, Valle (L)
 Rippee, Jones, Harbin, Robinson, Ortiz, Jusino, Valle (L)
 Rippee, Jones, Harbin, Robinson, O'Brien, Ortiz, Valle (L)
 Rippee, Jones, Harbin, Robinson, Ortiz, Jusino, Valle (L)
 Rippee, Jones, Harbin, Robinson, Ortiz, Jusino, Valle (L)
 Rippee, Jones, Harbin, Robinson, Ortiz, Dapic, Jusino, Valle (L)
 Rippee, Jones, Harbin, Robinson, Wohlschlaeger, Jusino, Valle (L)
 Rippee, Jones, Harbin, Robinson, Wohlschlaeger, Jusino, Valle (L)

HARBIN JOINS 25-KILL CLUB

With her effort against UMKC (Sept. 17), senior co-captain Danielle Harbin became the 18th player in program history to reach 25 (or more) kills in a match.

TOP-10 HOME CROWD

In hosting No. 25 Kansas State (Sept. 16), the Razorbacks played in front of 1,283 fans, the ninth-largest home crowd in program history. Five of the top-10 attendance figures have come over the past three seasons.

DEFENSIVE HIGH

Senior Savannah Voelzke tallied a pair of career highs with 17 digs and five total blocks against Southern Miss (Sept. 16). She is second on the team with four double-doubles.

ALL-TOURNAMENT PERFORMANCE

For the second-consecutive weekend to open the season, senior co-captain Danielle Harbin earned all-tournament accolades for her work during the Kansas Invitational. She had a then-career high of 22 kills against No. 4 Kansas.

BIG BLOCK

In pushing No. 4 Kansas to five sets (Sept. 3), seniors Breana Jones and Barbara Dapic tallied career highs of 11 and 10 blocks, respectively. Jones enters the week with nine matches of four or more total blocks.

THE GIRL IN THE DIFFERENT JERSEY

Sophomore libero Okiana Valle collected a season-high 28 digs against No. 4 Kansas (Sept. 3), a mark that also equals the high mark in the SEC this season. In three matches at the Kansas Invitational, she averaged 5.00 digs per set.

OPENING ACT

Senior Danielle Harbin tied her then-career high with 14 kills in the season opener at No. 14 Illinois (Aug. 26), tying the mark first established as a freshman in 2012. She went on to earn Illini Classic All-Tournament Team accolades.





2016 ARKANSAS RAZORBACKS | Front Row (l to r): Reagan Robinson, Pilar Victoria, Kori Ortiz, Bailee Hankenson, Okiana Valle, Rachel Rippee, Adrien Wohlschlaeger. Back Row (l to r): Volunteer Assistant Andy Rynd, Head Athletic Trainer Trish Matysak, Associate Head Coach Jon Newman-Gonchar, Fernanda Güttron, Savannah Voelzke, Breana Jones, Barbara Dapic, Ana Sofia Jusino, Kelly O'Brien, Danielle Harbin, Head Coach Jason Watson, Assistant Coach Sarah Rumely, Student Manager Jonathan Roark, Student Manager Kelley Goldberg.

| # | Name | Position | Height | Class/Exp. | Hometown/Previous |
|----|----------------------|----------|--------|------------|---|
| 1 | Rachel Rippee | S | 6-0 | Fr./HS | Springfield, Mo./Kickapoo HS |
| 2 | Breana Jones | MB | 6-2 | Sr./3L | Peachtree City, Ga./McIntosh HS |
| 3 | Danielle Harbin | OH/MB | 6-1 | Sr./3L | Mobile, Ala./McGill-Toolen Catholic HS |
| 6 | Fernanda Güttron | OPP | 6-0 | Fr./RS | Guadalajara, Mexico/Jose Vasconcelos |
| 7 | Reagan Robinson | OH | 5-11 | Fr./HS | Fayetteville, Ark./Shiloh Christian HS |
| 8 | Bailee Hankenson | S | 5-9 | Jr./2L | Decatur, Ind./Bellmont HS |
| 10 | Kelly O'Brien | OPP/MB | 6-1 | Soph./TR | Long Beach, Calif./Wyoming |
| 12 | Okiana Valle | L/DS | 5-2 | Soph./1L | Barceloneta, Puerto Rico/Christian Military |
| 14 | Adrien Wohlschlaeger | S | 6-0 | Sr./3L | Conroe, Texas/Conroe |
| 15 | Savannah Voelzke | OH | 6-0 | Sr./3L | Longview, Texas/Spring Hill HS |
| 17 | Kori Ortiz | L/DS | 5-5 | Jr./2L | Southlake, Texas/Carroll HS |
| 18 | Barbara Dapic | OH/OPP | 6-3 | Sr./3L | Split, Croatia/OK Brda |
| 19 | Ana Sofia Jusino | MB | 6-2 | Sr./3L | Toa Baja, Puerto Rico/Timber Creek HS |
| 21 | Pilar Victoria | OH | 5-11 | Sr./1L | Caguas, Puerto Rico/Texas |

Head Coach: Jason Watson/BYU, '95 (First Season/12th Overall)
 Associate Head Coach: Jon Newman-Gonchar/Northern Arizona, '05 (First Season)
 Assistant Coach: Sarah Rumely/Kentucky, '10 (Second Season)
 Volunteer Assistant: Andy Rynd/Bowling Green, '15 (First Season)
 Director of Operations: Stephanie Preach/Arizona State, '13 (First Season)
 Student Managers: Kelley Goldberg & Jonathan Roark

How Do You Say...
 Rachel Rippee _____ rippy
 Breana Jones _____ bree-ON-uh
 Fernanda Güttron _____ Gwee-troan
 Okiana Valle _____ oak-EE-on-uh VY-yay
 Adrien Wohlschlaeger _____ wole-SHLAY-gur
 Savannah Voelzke _____ VOLE-ski
 Barbara Dapic _____ Jah-pitch
 Ana Sofia Jusino _____ WHO-see-no
 Sarah Rumely _____ RUM-lee
 Andy Rynd _____ rend

ARKANSAS VOLLEYBALL QUICK FACTS

UNIVERSITY INFORMATION

Location _____ Fayetteville, Ark.
 Founded _____ March 27, 1871
 Enrollment _____ 26,754
 Nickname _____ Razorbacks
 School Colors _____ Cardinal, White
 Affiliation _____ NCAA Division I
 Conference _____ Southeastern (SEC)
 Chancellor _____ Dr. Joseph E Steinmetz
 Vice Chancellor/Director of Athletics _____ Jeff Long
 Faculty Athletic Representative _____ Sharon Hunt
 University Website _____ www.uark.edu
 Athletics Website _____ ArkansasRazorbacks.com

TEAM INFORMATION

2015 Overall Record _____ 17-13
 Conference Record _____ 7-11
 SEC Finish _____ 9th Overall
 Home Record _____ 9-6
 Away Record _____ 4-7
 Neutral Record _____ 4-0
 Letterwinners Returning/Lost _____ 10/5
 Starters Returning/Lost _____ 5+L/3
 Newcomers _____ 3

COACHING STAFF

Head Coach _____ Jason Watson
 Record at Arkansas _____ First Season
 Career Record _____ 205-165 (.554)
 Associate Head Coach _____ Jon Newman-Gonchar
 Assistant Coach _____ Sarah Rumely
 Director of Operations _____ Stephanie Preach
 Volleyball Office Phone _____ 479/575-4587

TEAM HISTORY

First Year of Volleyball _____ 1994
 All-Time Record _____ 443-303 (.594)
 All-Time SEC Record _____ 229-160 (.589)
 SEC Championships/Last _____ 1 (Tournament)/1997
 NCAA Appearances/Last _____ 11/2013

ARKANSAS COMMUNICATIONS

Asst AD for Communications _____ Patrick Pierson
 Associate Director _____ David Beall
 Associate Director _____ Jeri Thorpe
 Assistant Director _____ Joy Ekema-Agbaw
 Assistant Director (VB Contact) _____ Zach Lawson
 Lawson Office _____ 479-575-7089
 Lawson Cell _____ 479-595-2358
 Lawson E-mail _____ zlawson@uark.edu
 Assistant Director _____ John Thomas
 Content Strategist _____ Roland Liwag
 Intern _____ Brent Hull
 Intern _____ Brandon Langlois
 Intern _____ Austin Miller
 Graphic Designer _____ Christine Zambetti
 Secretary _____ Mary Lynn Gibson

Mailing Address

UA Communications
 PO Box 7777
 Fayetteville, Ark. 72702-777

Shipping Address

UA Communications
 131 Barnhill Arena
 Fayetteville, Ark. 72701
 Office: 479-575-2751



SEASON/CAREER DOUBLE-DOUBLES

1. Rachel Rippee | 16a, 11d vs. Maryland | 9-2-16
2. Savannah Voelzke | 10k, 15d vs. Maryland | 9-2-16
3. Rachel Rippee | 23a, 13d at #4 Kansas | 9-3-16
4. Savannah Voelzke | 14k, 12d at #4 Kansas | 9-3-16
5. Adrien Wohlschlaeger | 23a, 14d at #4 Kansas | 9-3-16
6. Savannah Voelzke | 10k, 10d at New Mexico | 9-8-16
7. Rachel Rippee | 37a, 11d vs. Southern Miss | 9-16-16
8. Danielle Harbin | 22k, 10d at Ole Miss | 10-2-16
9. Savannah Voelzke | 11k, 11d at Ole Miss | 10-2-16
10. Rachel Rippee | 49a, 10d at Tennessee | 10-16-16
11. Rachel Rippee | 44a, 13d vs Auburn | 10-23-16
12. Danielle Harbin | 23k, 18d vs Miss State | 10-26-16
13. Danielle Harbin | 27k, 12d vs Georgia | 10-30-16

Season Tally

- Rippee - 5
- Voelzke - 4
- Harbin - 3
- Wohlschlaeger - 1

Career Tally

- Victoria - 15
- Hankenson - 8
- Rippee - 5
- Wohlschlaeger - 4
- Voelzke - 4
- Harbin - 3

BY THE NUMBERS | BARNHILL ATTENDANCE

Top Single-Match Attendance

1. 3,015 vs. #13 Florida 9-14-12
2. 2,349 vs. South Carolina 11-19-14
3. 1,672 vs. Missouri 10-02-13
4. 1,463 vs. Tennessee State 8-29-14
5. 1,407 vs. #15 Colorado State 8-26-11
6. 1,362 vs. #5 Florida* 11-22-98
7. 1,342 vs. McNeese State 8-28-15
8. 1,284 vs. Kansas 8-29-15
9. 1,283 vs. #25 Kansas State 9-16-16
10. 1,272 vs. Oklahoma 9-7-10

* - 1998 SEC Tournament

Year-by-Year Attendance Totals

| Year | # of Matches | Total | Avg. |
|------|--------------|--------|-------|
| 1994 | 15 | 6,548 | 437 |
| 1995 | 13 | 6,194 | 477 |
| 1996 | 18 | 8,296 | 461 |
| 1997 | 15 | 8,101 | 540 |
| 1998 | 19 | 13,299 | 700 |
| 1999 | 14 | 6,315 | 451 |
| 2000 | 17 | 7,499 | 441 |
| 2001 | 11 | 5,794 | 527 |
| 2002 | 16 | 7,127 | 451 |
| 2003 | 11 | 5,683 | 517 |
| 2004 | 14 | 8,254 | 590 |
| 2005 | 14 | 9,365 | 669 |
| 2006 | 14 | 9,817 | 701 |
| 2007 | 16 | 10,919 | 682 |
| 2008 | 14 | 9,086 | 649 |
| 2009 | 14 | 10,316 | 737 |
| 2010 | 14 | 11,855 | 847 |
| 2011 | 14 | 12,903 | 922 |
| 2012 | 18 | 18,297 | 1,016 |
| 2013 | 15 | 13,047 | 870 |
| 2014 | 16 | 15,265 | 954 |
| 2015 | 15 | 14,697 | 980 |
| 2016 | 9 | 7,137 | 793 |



SEC PRESEASON VOTE

For a second-consecutive year, the Razorbacks have been picked to finish fifth in the SEC with the release of the league's preseason coaches' poll. Additionally, senior Pilar Victoria was voted to the Preseason All-SEC Team.

OH CAPTAIN, MY CAPTAIN

By way of a team vote, seniors Danielle Harbin and Breana Jones will serve as the Razorbacks' team captains. Harbin enters the year with 280 career kills while Jones posted a program-record .436 hitting percentage in 2015.

GOOD MORNING, MISS JONES

Senior co-captain Breana Jones will hold court as a student teacher four days a week this semester at Sonora Elementary in nearby Springdale, Ark. Jones carries a 3.636 cumulative GPA as an elementary education major.

SURE TO BE TESTED

This year's slate features 11 matches against nine teams that advanced to last year's NCAA Tournament including defending national champion Nebraska. Seven of Arkansas' opponents posted a top-25 RPI last season with six ranked inside the AVCA preseason top 25.

ALL-REGION TRIO

The Razorbacks return AVCA All-South Region selections middle blocker Breana Jones, outside hitter Pilar Victoria and libero Okiana Valle, who was named last year's South Region Freshman of the Year.

#SEN7ORS

Half of the Razorbacks' roster (seven of 14) consists of its senior class of Barbara Dapic, Danielle Harbin, Breana Jones, Ana Sofia Jusino, Pilar Victoria, Savannah Voelzke and Adrien Wohlschlaeger. Arkansas' junior and sophomore class have two each, along with three freshmen.

GRADUATE SALUTE

Senior middle blocker Ana Sofia Jusino is one of 11 Razorback student-athletes competing this fall that has earned their degree with remaining eligibility. In recognition, those student-athletes will wear an SEC Graduate patch on their jerseys during competition.

WATSON ERA

Jason Watson is in his first season as Arkansas' head coach and 12th overall after stops at BYU and Arizona State. He becomes the third head coach in program history. Watson comes to Fayetteville with a 200-147 career record.

JNG COACHES PAN AM TEAM

Associate head coach Jon Newman-Gonchar represented Team USA this summer as a member of the coaching staff at the Pan American Cup. The team came away with bronze during the two-week event in the Dominican Republic.

2016 ARKANSAS VOLLEYBALL MATCH NOTES

SEASON/CAREER HIGHS

#1 RACHEL RIPPEE | FR | S

SEASON HIGHS

Hitting % _____ --
 Kills _____ *3 vs. Mississippi State | 10-26-16
 Attempts _____ 7 at #23 Kentucky | 10-14-16
 Assists _____ *49 at Tennessee | 10-16-16
 Digs _____ *13 vs. Auburn | 10-23-16
 Blocks _____ 4.0 (0-4) vs. UMKC | 9-17-16
 Aces _____ 6 vs Georgia | 10-30-16

CAREER HIGHS

Hitting % _____ --
 Kills _____ *3 vs. Mississippi State | 10-26-16
 Attempts _____ 7 at #23 Kentucky | 10-14-16
 Assists _____ *49 at Tennessee | 10-16-16
 Digs _____ *13 vs. Auburn | 10-23-16
 Blocks _____ 4.0 (0-4) vs. UMKC | 9-17-16
 Aces _____ 6 vs Georgia | 10-30-16

#2 BREANA JONES | SR | MB

SEASON HIGHS

Hitting % _____ .636 (7-0-11) vs. Missouri | 9-30-16
 Kills _____ *13 vs. Mississippi State | 10-26-16
 Attempts _____ 26 at Tennessee | 10-16-16
 Assists _____ 2 vs. UMKC | 9-17-16
 Digs _____ *4 at Tennessee | 10-16-16
 Blocks _____ 11.0 (0-11) at #4 Kansas | 9-3-16
 Aces _____ *2 vs. Mississippi State | 10-26-16

CAREER HIGHS

Hitting % _____ *.636 (7-0-11) vs. Missouri | 9-30-16
 Kills _____ 15 at South Carolina | 10-25-15
 Attempts _____ *26 at Tennessee | 10-16-16
 Assists _____ 2 vs. UMKC | 9-17-16
 Digs _____ 5 vs. Missouri | 10-2-13
 Blocks _____ 11.0 (0-11) at #4 Kansas | 9-3-16
 Aces _____ *2 vs. Mississippi State | 10-26-16

#3 DANIELLE HARBIN | SR | OH/MB

SEASON HIGHS

Hitting % _____ .357 (14-4-28) at LSU | 9-25-16
 Kills _____ 27 vs. Georgia | 10-30-16
 Attempts _____ 69 at Tennessee | 10-16-16
 Assists _____ *1 vs. Mississippi State | 10-26-16
 Digs _____ 18 vs. Mississippi State | 10-26-16
 Blocks _____ 6.0 (1-5) vs. Georgia | 10-30-16
 Aces _____ 3 vs. Maryland | 9-2-16

CAREER HIGHS

Hitting % _____ .417 (14-4-24) vs. UMKC | 8-31-13
 Kills _____ 27 vs. Georgia | 10-30-16
 Attempts _____ 69 at Tennessee | 10-16-16
 Assists _____ *1 vs. Mississippi State | 10-26-16
 Digs _____ 18 vs. Mississippi State | 10-26-16
 Blocks _____ 7.0 (1-6) vs. Mississippi State | 11-24-13
 Aces _____ 3 vs. Maryland | 9-2-16

#6 FERNANDA GUITRON | R-FR | OPP

SEASON HIGHS

Hitting % _____ .188 (5-2-16) at New Mexico | 9-8-16
 Kills _____ 5 at New Mexico | 9-8-16
 Attempts _____ 24 vs. Maryland | 9-2-16
 Assists _____ --
 Digs _____ 3 vs. Maryland | 9-2-16
 Blocks _____ *2.0 (0-2) at #4 Kansas | 9-3-16
 Aces _____ --

CAREER HIGHS

Hitting % _____ .188 (5-2-16) at New Mexico | 9-8-16
 Kills _____ 5 at New Mexico | 9-8-16
 Attempts _____ 24 vs. Maryland | 9-2-16
 Assists _____ --
 Digs _____ 3 vs. Maryland | 9-2-16
 Blocks _____ *2.0 (0-2) at #4 Kansas | 9-3-16
 Aces _____ --

#7 REAGAN ROBINSON | FR | OH

SEASON HIGHS

Hitting % _____ .238 (7-2-21) vs Alabama | 10-21-16
 Kills _____ *9 vs. Mississippi State | 10-26-16
 Attempts _____ 31 at #23 Kentucky | 10-14-16
 Assists _____ *1 vs. Georgia | 10-30-16
 Digs _____ 12 at #23 Kentucky | 10-14-16
 Blocks _____ 2.0 (0-2) vs. Mississippi State | 10-26-16
 Aces _____ *2 vs Alabama | 10-21-16

CAREER HIGHS

Hitting % _____ .238 (7-2-21) vs Alabama | 10-21-16
 Kills _____ *9 vs. Mississippi State | 10-26-16
 Attempts _____ 31 at #23 Kentucky | 10-14-16
 Assists _____ *1 vs. Georgia | 10-30-16
 Digs _____ 12 at #23 Kentucky | 10-14-16
 Blocks _____ 2.0 (0-2) vs. Mississippi State | 10-26-16
 Aces _____ *2 vs Alabama | 10-21-16

#8 BAILEE HANKENSON | JR | S

SEASON HIGHS

Hitting % _____ --
 Kills _____ --
 Attempts _____ --
 Assists _____ --
 Digs _____ --
 Blocks _____ --
 Aces _____ --

CAREER HIGHS

Hitting % _____ .700 (7-0-10) at #20 TAMU | 10-15-14
 Kills _____ 7 at #20 Texas A&M | 10-15-14
 Attempts _____ *15 at #24 Kansas | 9-20-14
 Assists _____ 61 vs. Georgia | 10-12-14
 Digs _____ 14 vs. Michigan | 8-30-14
 Blocks _____ 6.0 (0-6) vs. LSU | 11-2-14
 Aces _____ *2 vs. Mississippi State | 9-28-14

#10 KELLY O'BRIEN | SOPH | OH

SEASON HIGHS

Hitting % _____ .250 (4-2-8) vs. #1 Nebraska | 9-9-16
 Kills _____ 4 vs. #1 Nebraska | 9-9-16
 Attempts _____ 8 vs. #1 Nebraska | 9-9-16
 Assists _____ --
 Digs _____ --
 Blocks _____ 3.0 (0-3) at #23 Kentucky | 10-14-16
 Aces _____ --

CAREER HIGHS (at Arkansas)

Hitting % _____ .250 (4-2-8) vs. #1 Nebraska | 9-9-16
 Kills _____ 4 vs. #1 Nebraska | 9-9-16
 Attempts _____ 8 vs. #1 Nebraska | 9-9-16
 Assists _____ --
 Digs _____ --
 Blocks _____ 3.0 (0-3) at #23 Kentucky | 10-14-16
 Aces _____ --

#12 OKIANA VALLE | SOPH | L/D/S

SEASON HIGHS

Hitting % _____ --
 Kills _____ 1 vs. #25 Kansas State | 9-16-16
 Attempts _____ 2 at Ole Miss | 10-2-16
 Assists _____ 9 at #4 Kansas | 9-3-16
 Digs _____ *28 vs. Georgia | 10-30-16
 Blocks _____ --
 Aces _____ *2 vs. Alabama | 10-21-16

CAREER HIGHS

Hitting % _____ --
 Kills _____ 1 vs. #25 Kansas State | 9-16-16
 Attempts _____ *3 vs. South Carolina | 11-25-15
 Assists _____ 9 at #4 Kansas | 9-3-16
 Digs _____ 32 vs. South Carolina | 11-25-15
 Blocks _____ --
 Aces _____ 4 vs. Southeast Missouri | 9-12-15

#14 ADRIEN WOHLSCHLAEGER | FR | S

SEASON HIGHS

Hitting % _____ --
 Kills _____ --
 Attempts _____ *1 vs. Chicago State | 9-2-16
 Assists _____ 27 vs. Chicago State | 9-2-16
 Digs _____ 14 at #4 Kansas | 9-3-16
 Blocks _____ --
 Aces _____ 2 vs. Georgia | 10-30-16

CAREER HIGHS

Hitting % _____ --
 Kills _____ 5 at Tennessee | 10-11-15
 Attempts _____ 10 vs. #11 Wisconsin | 9-19-15
 Assists _____ 65 at LSU | 9-23-15
 Digs _____ *14 at #4 Kansas | 9-3-16
 Blocks _____ 6.0 (0-6) vs. Ole Miss | 10-18-15
 Aces _____ *2 vs. Georgia | 10-30-16

#15 SAVANNAH VOELZKE | SR | OH

SEASON HIGHS

Hitting % _____ .448 (14-1-29) at LSU | 9-25-16
 Kills _____ *14 at LSU | 9-25-16
 Attempts _____ 47 at #4 Kansas | 9-3-16
 Assists _____ *2 vs. #1 Nebraska | 9-9-16
 Digs _____ 17 vs. Southern Miss | 9-16-16
 Blocks _____ 5.0 (0-5) vs. Southern Miss | 9-16-16
 Aces _____ *2 at Oral Roberts | 9-20-16

CAREER HIGHS

Hitting % _____ .692 (9-0-13) vs. Texas A&M | 11-19-14
 Kills _____ *14 at LSU | 9-25-16
 Attempts _____ 47 at #4 Kansas | 9-3-16
 Assists _____ 4 at #20 Texas A&M | 10-15-14
 Digs _____ 17 vs. Southern Miss | 9-16-16
 Blocks _____ 5.0 (0-5) vs. Southern Miss | 9-16-16
 Aces _____ 3 vs. Ole Miss | 10-8-14

#17 KORI ORTIZ | JR | L/D/S

SEASON HIGHS

Hitting % _____ --
 Kills _____ 1 vs. Missouri State | 8-27-16
 Attempts _____ *1 vs. Southern Miss | 9-16-16
 Assists _____ 2 vs. Southern Miss | 9-16-16
 Digs _____ 9 at Tennessee | 10-16-16
 Blocks _____ --
 Aces _____ 1 vs. Xavier | 8-27-16

CAREER HIGHS

Hitting % _____ --
 Kills _____ 1 vs. Missouri State | 8-27-16
 Attempts _____ *2 vs. South Dakota | 9-12-14
 Assists _____ 6 vs. Army | 8-29-15
 Digs _____ 18 vs. Kansas State | 9-19-15
 Blocks _____ --
 Aces _____ *1 vs. #19 Texas A&M | 11-28-15

#18 BARBARA DAPIC | SR | OH/OPP

SEASON HIGHS

Hitting % _____ .455 (11-1-22) vs. Xavier | 8-27-16
 Kills _____ 14 at Ole Miss | 10-2-16
 Attempts _____ 34 at #4 Kansas | 9-3-16
 Assists _____ *1 vs. Texas A&M | 10-5-16
 Digs _____ 5 vs. #25 Kansas State | 9-16-16
 Blocks _____ 10.0 (0-10) at #4 Kansas | 9-3-16
 Aces _____ *1 vs. Southern Miss | 9-16-16

CAREER HIGHS

Hitting % _____ .667 (10-0-15) vs. Saint Louis | 9-21-13
 Kills _____ 16 vs. South Carolina | 11-25-15
 Attempts _____ 42 vs. South Carolina | 11-25-15
 Assists _____ *1 vs. Texas A&M | 10-5-16
 Digs _____ 6 at Tennessee | 11-26-14
 Blocks _____ 10.0 (0-10) at #4 Kansas | 9-3-16
 Aces _____ 2 vs. Northwestern State | 9-11-15



2016 ARKANSAS VOLLEYBALL MATCH NOTES

SEASON/CAREER HIGHS

#19 ANA SOFIA JUSINO | SR | MB

SEASON HIGHS

Hitting % _____ .600 (6-0-10) vs. Auburn | 10-23-16
 Kills _____ 10 vs. UMKC | 9-17-16
 Attempts _____ 23 at Ole Miss | 10-2-16
 Assists _____ --
 Digs _____ *2 vs. Texas A&M | 10-5-16
 Blocks _____ 8.0 (1-7) at Tennessee | 10-16-16
 Aces _____ --

CAREER HIGHS

Hitting % _____ .800 (8-0-10) vs. No. Colorado | 9-14-13
 Kills _____ 12 vs. Oral Roberts | 9-9-14
 Attempts _____ 28 vs. Kansas | 9-5-13
 Assists _____ 1 vs. New Mexico | 8-30-13
 Digs _____ 3 at Mississippi State | 11-8-15
 Blocks _____ 10.0 (1-9) vs. North Texas | 9-19-14
 Aces _____ --

#21 PILAR VICTORIA | SR | OH

SEASON HIGHS

Hitting % _____
 Kills _____
 Attempts _____
 Assists _____
 Digs _____
 Blocks _____
 Aces _____

CAREER HIGHS (at Arkansas)

Hitting % _____ .481 (16-3-27) vs. Georgia | 11-15-15
 Kills _____ 35 vs. Ole Miss | 10-18-15
 Attempts _____ 79 vs. Ole Miss | 10-18-15
 Assists _____ *2 vs. Kansas State | 9-19-15
 Digs _____ 19 at LSU | 9-23-15
 Blocks _____ 6.0 (3-3) vs. Ole Miss | 10-18-15
 Aces _____ *2 vs. Alabama | 11-1-15

*Tied, most recent listed

MILESTONE WATCH

Barbara Dapic (OH/OPP | Sr.)

Looking for: 547 kills (ARK #30)
 Looking for: 200 blocks (career)

Current Total: 505
 Current Total: 177

Needs: 42
 Needs: 23

Danielle Harbin (OH/MB | Sr.)

Looking for: 700 kills
 Looking for: 200 blocks (career)

Current Total: 635
 Current Total: 194

Needs: 65
 Needs: 6

Breana Jones (MB | Sr.)

Looking for: 500 kills (career)
 Looking for: 247 blocks (ARK #20)

Current Total: 496
 Current Total: 228

Needs: 4
 Needs: 19

Ana Sofia Jusino (MB | Sr.)

Looking for: 400 kills (career)
 Looking for: 353 blocks (ARK #10)

Current Total: 399
 Current Total: 318

Needs: 1
 Needs: 35

Kori Ortiz (L/DS | Jr.)

Looking for: 678 digs (ARK #20)

Current Total: 548

Needs: 130

Okiana Valle (L/DS | Soph.)

Looking for: 800 digs

Current Total: 783

Needs: 17

Pilar Victoria (OH | Jr.)

Looking for: 789 kills (ARK #20)

Current Total: 525

Needs: 264

Adrien Wohlschlaeger (S | Sr.)

Looking for: 1261 assists (ARK #9)

Current Total: 1260

Needs: 1



2016 ARKANSAS VOLLEYBALL MATCH NOTES

TEAM OVERALL STATS

| RECORD: | OVERALL | HOME | AWAY | NEUTRAL |
|----------------|---------|------|------|---------|
| ALL GAMES | 5-18 | 3-6 | 1-8 | 1-4 |
| CONFERENCE | 3-8 | 2-4 | 1-4 | 0-0 |
| NON-CONFERENCE | 2-10 | 1-2 | 0-4 | 1-4 |

| # | Player | sp | Attack | | | | Set | | Serve | | | Dig | | | Blocking | | | | | points | | |
|-----------|----------------------|----|--------|-------|-----|------|------|------|-------|-----|-----|------|-----|------|----------|----|-----|-------|-------|--------|----|--------|
| | | | k | k/s | e | ta | pct | a | a/s | sa | se | sa/s | re | dig | dig/s | bs | ba | total | blk/s | | be | bhe |
| 17 | Kori Ortiz | 79 | 1 | 0.01 | 0 | 2 | .500 | 6 | 0.08 | 1 | 6 | 0.01 | 7 | 100 | 1.27 | 0 | 0 | 0 | 0.00 | 0 | 0 | 2.0 |
| 2 | Breana Jones | 83 | 152 | 1.83 | 55 | 367 | .264 | 6 | 0.07 | 9 | 26 | 0.11 | 0 | 36 | 0.43 | 2 | 73 | 75 | 0.90 | 6 | 1 | 199.5 |
| 19 | Ana Sofia Jusino | 81 | 108 | 1.33 | 46 | 239 | .259 | 0 | 0.00 | 0 | 0 | 0.00 | 0 | 9 | 0.11 | 5 | 74 | 79 | 0.98 | 7 | 0 | 150.0 |
| 3 | Danielle Harbin | 84 | 355 | 4.23 | 154 | 968 | .208 | 2 | 0.02 | 6 | 32 | 0.07 | 24 | 140 | 1.67 | 7 | 54 | 61 | 0.73 | 8 | 0 | 395.0 |
| 12 | Okiana Valle | 84 | 1 | 0.01 | 0 | 5 | .200 | 64 | 0.76 | 12 | 41 | 0.14 | 27 | 342 | 4.07 | 0 | 0 | 0 | 0.00 | 0 | 2 | 13.0 |
| 18 | Barbara Dapic | 82 | 143 | 1.74 | 64 | 404 | .196 | 2 | 0.02 | 2 | 8 | 0.02 | 1 | 33 | 0.40 | 3 | 47 | 50 | 0.61 | 3 | 0 | 171.5 |
| 7 | Reagan Robinson | 46 | 47 | 1.02 | 27 | 166 | .120 | 3 | 0.07 | 7 | 14 | 0.15 | 12 | 71 | 1.54 | 0 | 3 | 3 | 0.07 | 0 | 0 | 55.5 |
| 15 | Savannah Voelzke | 71 | 141 | 1.99 | 85 | 498 | .112 | 10 | 0.14 | 16 | 34 | 0.23 | 22 | 174 | 2.45 | 3 | 25 | 28 | 0.39 | 14 | 2 | 172.5 |
| 6 | Fernanda Guitron | 28 | 19 | 0.68 | 16 | 94 | .032 | 0 | 0.00 | 0 | 1 | 0.00 | 0 | 13 | 0.46 | 1 | 9 | 10 | 0.36 | 2 | 0 | 24.5 |
| 1 | Rachel Rippee | 84 | 17 | 0.20 | 16 | 56 | .018 | 708 | 8.43 | 24 | 25 | 0.29 | 0 | 149 | 1.77 | 0 | 25 | 25 | 0.30 | 4 | 27 | 53.5 |
| 10 | Kelly O'Brien | 8 | 5 | 0.62 | 5 | 18 | .000 | 0 | 0.00 | 0 | 1 | 0.00 | 0 | 0 | 0.00 | 0 | 5 | 5 | 0.62 | 1 | 0 | 7.5 |
| 14 | Adrien Wohlschlaeger | 40 | 0 | 0.00 | 0 | 2 | .000 | 131 | 3.28 | 4 | 11 | 0.10 | 1 | 58 | 1.45 | 0 | 0 | 0 | 0.00 | 2 | 6 | 4.0 |
| TEAM | | - | - | - | - | - | - | - | - | - | - | - | 12 | - | - | - | - | - | - | - | - | - |
| ARKANSAS | | 84 | 989 | 11.77 | 468 | 2819 | .185 | 932 | 11.10 | 81 | 199 | 0.96 | 106 | 1125 | 13.39 | 21 | 315 | 178.5 | 2.12 | 47 | 38 | 1248.5 |
| Opponents | | 84 | 1144 | 13.62 | 431 | 2886 | .247 | 1071 | 12.75 | 106 | 192 | 1.26 | 81 | 1153 | 13.73 | 35 | 292 | 181.0 | 2.15 | 40 | 21 | 1431.0 |

| Team Statistics | AR | OPP |
|-------------------------|-------|--------|
| ATTACK | | |
| Kills | 989 | 1144 |
| Errors | 468 | 431 |
| Total Attacks | 2819 | 2886 |
| Attack Pct | .185 | .247 |
| Kills/Set | 11.8 | 13.6 |
| SET | | |
| Assists | 932 | 1071 |
| Attempts | 2946 | 2869 |
| Assist Pct | .316 | .373 |
| Assists/Set | 11.1 | 12.8 |
| SERVE | | |
| Aces | 81 | 106 |
| Errors | 199 | 192 |
| Attempts | 1747 | 1965 |
| Serve Pct | .886 | .902 |
| Aces/Set | 1.0 | 1.3 |
| SERVE RECEPTIONS | | |
| Errors | 106 | 81 |
| Errors/Set | 1.3 | 1.0 |
| Attempts | 1769 | 1548 |
| Reception Pct | .940 | .948 |
| DEFENSE | | |
| Digs | 1125 | 1153 |
| Digs/Set | 13.4 | 13.7 |
| BLOCKING | | |
| Block Solo | 21 | 35 |
| Block Assist | 315 | 292 |
| Total Blocks | 178.5 | 181.0 |
| Blocks/Set | 2.1 | 2.2 |
| Block Errors | 47 | 40 |
| Ball handling errors | 38 | 21 |
| ATTENDANCE | | |
| Total | 7137 | 11394 |
| Dates/Avg Per Date | 9/793 | 9/1266 |
| Neutral site #/Avg | 5/225 | |
| Current win streak | 2 | - |
| Home win streak | 2 | - |

| Date | Opponent | Score | Score by set | Att. |
|---------|----------------------|-------|-------------------------------|------|
| Aug 26 | at #14 Illinois | L 0-3 | 19-25,13-25,22-25 | 2805 |
| Aug 27 | vs Missouri State | L 0-3 | 16-25,19-25,27-29 | 0 |
| Aug 27 | vs Xavier | L 1-3 | 17-25,25-22,14-25,21-25 | 0 |
| Sep 02 | vs Maryland | L 1-3 | 21-25,22-25,25-20,19-25 | 500 |
| Sep 02 | vs Chicago State | w 3-1 | 21-25,25-16,25-19,25-22 | 552 |
| Sep 03 | at #4 Kansas | L 2-3 | 20-25,25-23,19-25,33-31,8-15 | 1234 |
| #Sep 08 | at New Mexico | L 1-3 | 12-25,25-20,20-25,17-25 | 1132 |
| #Sep 09 | vs #1 Nebraska | L 0-3 | 19-25,15-25,21-25 | 75 |
| Sep 16 | SOUTHERN MISSISSIPPI | L 1-3 | 26-28,16-25,25-15,19-25 | 522 |
| Sep 16 | #25 KANSAS STATE | L 0-3 | 21-25,17-25,13-25 | 1283 |
| Sep 17 | UMKC | w 3-1 | 22-25,25-15,25-18,25-16 | 327 |
| Sep 20 | at ORU | L 0-3 | 22-25,21-25,27-29 | 1272 |
| *Sep 25 | at LSU | w 3-0 | 25-21,25-17,25-14 | 651 |
| *Sep 30 | MISSOURI | L 0-3 | 18-25,16-25,17-25 | 841 |
| *Oct 02 | at Ole Miss | L 2-3 | 15-25,25-20,14-25,25-20,10-15 | 444 |
| *Oct 05 | TEXAS A&M | L 0-3 | 22-25,11-25,15-25 | 648 |
| *Oct 09 | at Missouri | L 0-3 | 19-25,29-31,12-25 | 2203 |
| *Oct 14 | at #23 Kentucky | L 0-3 | 20-25,19-25,17-25 | 890 |
| *Oct 16 | at Tennessee | L 1-3 | 18-25,23-25,25-22,22-25 | 763 |
| *Oct 21 | ALABAMA | L 0-3 | 22-25,12-25,19-25 | 1057 |
| *Oct 23 | AUBURN | L 1-3 | 21-25,25-23,20-25,19-25 | 856 |
| *Oct 26 | MISSISSIPPI STATE | w 3-1 | 24-26,25-22,25-23,27-25 | 932 |
| *Oct 30 | GEORGIA | w 3-2 | 21-25,24-26,27-25,25-23,15-12 | 671 |

Record in 3-set matches: 1-10
 Record in 4-set matches: 3-6
 Record in 5-set matches: 1-2

2016 ARKANSAS VOLLEYBALL MATCH NOTES

TEAM SEC STATS

| RECORD: | OVERALL | HOME | AWAY | NEUTRAL |
|----------------|---------|------|------|---------|
| ALL GAMES | 3-8 | 2-4 | 1-4 | 0-0 |
| CONFERENCE | 3-8 | 2-4 | 1-4 | 0-0 |
| NON-CONFERENCE | 0-0 | 0-0 | 0-0 | 0-0 |

| # | Player | sp | Attack | | | | | Set | | Serve | | | Dig | | Blocking | | | | | points | | |
|-----------|----------------------|----|--------|-------|-----|------|-------|-----|-------|-------|----|------|-----|-----|----------|----|-----|-------|-------|--------|----|-------|
| | | | k | k/s | e | ta | pct | a | a/s | sa | se | sa/s | re | dig | dig/s | bs | ba | total | blk/s | | be | bhe |
| 2 | Breana Jones | 39 | 88 | 2.26 | 18 | 182 | .385 | 1 | 0.03 | 4 | 6 | 0.10 | 0 | 19 | 0.49 | 0 | 27 | 27 | 0.69 | 1 | 0 | 105.5 |
| 19 | Ana Sofia Jusino | 37 | 51 | 1.38 | 24 | 114 | .237 | 0 | 0.00 | 0 | 0 | 0.00 | 0 | 2 | 0.05 | 3 | 33 | 36 | 0.97 | 2 | 0 | 70.5 |
| 3 | Danielle Harbin | 40 | 181 | 4.53 | 89 | 502 | .183 | 2 | 0.05 | 1 | 12 | 0.03 | 20 | 91 | 2.28 | 5 | 26 | 31 | 0.77 | 4 | 0 | 200.0 |
| 18 | Barbara Dapic | 38 | 60 | 1.58 | 32 | 175 | .160 | 1 | 0.03 | 0 | 3 | 0.00 | 1 | 7 | 0.18 | 0 | 16 | 16 | 0.42 | 0 | 0 | 68.0 |
| 7 | Reagan Robinson | 27 | 40 | 1.48 | 23 | 137 | .124 | 3 | 0.11 | 6 | 11 | 0.22 | 9 | 52 | 1.93 | 0 | 3 | 3 | 0.11 | 0 | 0 | 47.5 |
| 15 | Savannah Voelzke | 27 | 46 | 1.70 | 26 | 166 | .120 | 2 | 0.07 | 4 | 8 | 0.15 | 4 | 46 | 1.70 | 3 | 5 | 8 | 0.30 | 7 | 1 | 55.5 |
| 12 | Okiana Valle | 40 | 0 | 0.00 | 0 | 3 | .000 | 21 | 0.52 | 5 | 17 | 0.12 | 12 | 169 | 4.22 | 0 | 0 | 0 | 0.00 | 0 | 1 | 5.0 |
| 17 | Kori Ortiz | 35 | 0 | 0.00 | 0 | 0 | .000 | 2 | 0.06 | 0 | 4 | 0.00 | 2 | 48 | 1.37 | 0 | 0 | 0 | 0.00 | 0 | 0 | 0.0 |
| 14 | Adrien Wohlschlaeger | 13 | 0 | 0.00 | 0 | 0 | .000 | 2 | 0.15 | 2 | 4 | 0.15 | 1 | 21 | 1.62 | 0 | 0 | 0 | 0.00 | 0 | 0 | 2.0 |
| 1 | Rachel Rippee | 40 | 9 | 0.22 | 14 | 38 | -.132 | 410 | 10.25 | 13 | 12 | 0.32 | 0 | 70 | 1.75 | 0 | 17 | 17 | 0.43 | 2 | 15 | 30.5 |
| 10 | Kelly O'Brien | 5 | 1 | 0.20 | 2 | 7 | -.143 | 0 | 0.00 | 0 | 1 | 0.00 | 0 | 0 | 0.00 | 0 | 4 | 4 | 0.80 | 0 | 0 | 3.0 |
| 6 | Fernanda Guitron | 4 | 1 | 0.25 | 5 | 12 | -.333 | 0 | 0.00 | 0 | 0 | 0.00 | 0 | 4 | 1.00 | 0 | 1 | 1 | 0.25 | 0 | 0 | 1.5 |
| TEAM | | - | - | - | - | - | - | - | - | - | - | - | 9 | - | - | - | - | - | - | - | - | - |
| ARKANSAS | | 40 | 477 | 11.93 | 233 | 1336 | .183 | 444 | 11.10 | 35 | 78 | 0.88 | 58 | 529 | 13.23 | 11 | 132 | 77.0 | 1.92 | 16 | 17 | 589.0 |
| Opponents | | 40 | 546 | 13.65 | 202 | 1355 | .254 | 506 | 12.65 | 58 | 90 | 1.45 | 35 | 534 | 13.35 | 20 | 126 | 83.0 | 2.08 | 18 | 8 | 687.0 |

| Team Statistics | AR | OPP |
|-------------------------|-------|-------|
| ATTACK | | |
| Kills | 477 | 546 |
| Errors | 233 | 202 |
| Total Attacks | 1336 | 1355 |
| Attack Pct | .183 | .254 |
| Kills/Set | 11.9 | 13.6 |
| SET | | |
| Assists | 444 | 506 |
| Attempts | 1355 | 1317 |
| Assist Pct | .328 | .384 |
| Assists/Set | 11.1 | 12.6 |
| SERVE | | |
| Aces | 35 | 58 |
| Errors | 78 | 90 |
| Attempts | 822 | 937 |
| Serve Pct | .905 | .904 |
| Aces/Set | 0.9 | 1.5 |
| SERVE RECEPTIONS | | |
| Errors | 58 | 35 |
| Errors/Set | 1.5 | 0.9 |
| Attempts | 845 | 744 |
| Reception Pct | .931 | .953 |
| DEFENSE | | |
| Digs | 529 | 534 |
| Digs/Set | 13.2 | 13.4 |
| BLOCKING | | |
| Block Solo | 11 | 20 |
| Block Assist | 132 | 126 |
| Total Blocks | 77.0 | 83.0 |
| Blocks/Set | 1.9 | 2.1 |
| Block Errors | 16 | 18 |
| Ball handling errors | 17 | 8 |
| ATTENDANCE | | |
| Total | 5005 | 4951 |
| Dates/Avg Per Date | 6/834 | 5/990 |
| Neutral site #/Avg | 0/0 | |
| Current win streak | 2 | - |
| Home win streak | 2 | - |

| Date | Opponent | Score | Score by set | Att. |
|---------|-------------------|-------|-------------------------------|------|
| *Sep 25 | at LSU | w 3-0 | 25-21,25-17,25-14 | 651 |
| *Sep 30 | MISSOURI | L 0-3 | 18-25,16-25,17-25 | 841 |
| *Oct 02 | at Ole Miss | L 2-3 | 15-25,25-20,14-25,25-20,10-15 | 444 |
| *Oct 05 | TEXAS A&M | L 0-3 | 22-25,11-25,15-25 | 648 |
| *Oct 09 | at Missouri | L 0-3 | 19-25,29-31,12-25 | 2203 |
| *Oct 14 | at #23 Kentucky | L 0-3 | 20-25,19-25,17-25 | 890 |
| *Oct 16 | at Tennessee | L 1-3 | 18-25,23-25,25-22,22-25 | 763 |
| *Oct 21 | ALABAMA | L 0-3 | 22-25,12-25,19-25 | 1057 |
| *Oct 23 | AUBURN | L 1-3 | 21-25,25-23,20-25,19-25 | 856 |
| *Oct 26 | MISSISSIPPI STATE | w 3-1 | 24-26,25-22,25-23,27-25 | 932 |
| *Oct 30 | GEORGIA | w 3-2 | 21-25,24-26,27-25,25-23,15-12 | 671 |

Record in 3-set matches: 1-5
 Record in 4-set matches: 1-2
 Record in 5-set matches: 1-1

RADIO/TV HEADSHOT ROSTER



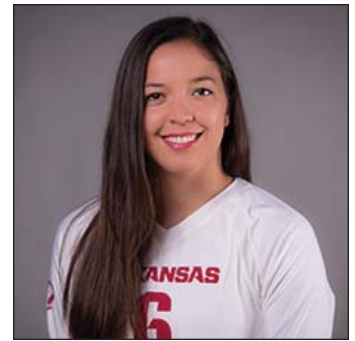
1 RACHEL RIPPEE
FR | 6-0 | S
SPRINGFIELD, MO.



2 BREANA JONES
SR | 6-2 | MB
PEACHTREE CITY, GA.



3 DANIELLE HARBIN
SR | 6-1 | OH
MOBILE, ALA.



6 FERNANDA GÜITRON
RS-FR | 6-0 | OPP
GUADALAJARA, MEXICO



7 REAGAN ROBINSON
FR | 5-11 | OH
FAYETTEVILLE, ARK.



8 BAILEE HANKENSON
JR | 5-9 | S
DECATUR, IND.



10 KELLY O'BRIEN
SOPH | 6-1 | MB
LONG BEACH, CALIF.



12 OKIANA VALLE
SOPH | 5-2 | L/DS
BARCELONETA, PUERTO RICO



14 ADRIEN WOHLSCHLAEGER
SR | 6-0 | S
CONROE, TEXAS



15 SAVANNAH VOELZKE
SR | 6-0 | OH
LONGVIEW, TEXAS



17 KORI ORTIZ
JR | 5-5 | L/DS
SOUTHLAKE, TEXAS



18 BARBARA DAPIC
SR | 6-3 | OH/OPP
SPLIT, CROATIA



19 ANA SOFIA JUSINO
SR | 6-2 | MB
TOA BAJA, PUERTO RICO



21 PILAR VICTORIA
SR | 5-11 | OH
CAGUAS, PUERTO RICO