



11 NCAA TOURNAMENT APPEARANCES | 11 AVCA ALL-AMERICA SELECTIONS | 64 ALL-SEC SELECTIONS

ARKANSAS
2017 VOLLEYBALL

RESULTS/SCHEDULE

OVERALL: 13-6 | SEC: 3-4
H: 7-1 | A: 3-3 | N: 3-2

AUGUST

25	CSU Bakersfield		W, 3-1
26	ULM	SECN+	W, 3-0
26	Utah State	SECN+	W, 3-0
31	at Kansas State	ESPN3	W, 3-2

SEPTEMBER

1	vs #6 Wisconsin		L, 0-3
2	vs Syracuse		W, 3-0
5	Oral Roberts	SECN+	W, 3-0
8	vs #19 USC	Big West TV	L, 2-3
8	vs Yale	Big West TV	W, 3-0
9	at UCSB	Big West TV	W, 3-2
15	vs Sam Houston State		W, 3-0
16	at SMU	PonyUp TV	W, 3-2
20	Tennessee*	ESPNU	W, 3-0
24	Florida*		L, 2-3
27	at Alabama*	SEC Network	L, 2-3

OCTOBER

1	at Auburn*	SECN+	L, 0-3
6	Ole Miss*	SECN+	W, 3-2
8	at LSU*	SECN+	L, 2-3
13	South Carolina*	SECN+	W, 3-0
20	at Texas A&M*	SECN+	6:30 p.m.
22	Mississippi State*	SEC Network	12 p.m.
25	at Georgia*	ESPNU	6 p.m.
29	at Ole Miss*	SECN+	1:30 p.m.

NOVEMBER

3	LSU*	SECN+	7 p.m.
5	Texas A&M*	SECN+	1 p.m.
10	at Florida*	SECN+	6 p.m.
12	at South Carolina*	SECN+	12:30 p.m.
19	at Missouri*	SECWC	3 p.m.
22	Kentucky*	SECN+	7 p.m.
25	Auburn*	SECN+	1 p.m.

DECEMBER

1-2	NCAA 1st/2nd Rounds	TBA
8-9	NCAA Regional Rounds	TBA
14	NCAA Semifinals	TBA
16	NCAA Championship	TBA

! - Arkansas Classic
- K-State Invitational
% - UCSB Thunderdome Classic
^ - SMU Doubletree Classic
* - SEC match

All home matches played at Barnhill Arena (8,500)
All times CENTRAL and subject to change



COMING UP NEXT

TEXAS A&M AGGIES

Record: 6-8, 3-4 SEC
Rank: NR
All-Time Series: Texas A&M, 6-2
Last Meeting: Texas A&M, 3-0 (10/5/16)



MISSISSIPPI STATE BULLDOGS

Record: 9-14, 0-8 SEC
Rank: NR
All-Time Series: Arkansas, 39-5
Last Meeting: Arkansas, 3-2 (11/20/16)



GEORGIA BULLDOGS

Record: 13-8, 3-5 SEC
Rank: NR
All-Time Series: Arkansas, 24-9
Last Meeting: Arkansas, 3-1 (11/18/16)



#ARKVB NEWS/NOTES

ALL-TIME SERIES VS TEXAS A&M

With a week between matches, Arkansas travels to College Station for the ninth meeting in its all-time series against Texas A&M. All eight previous matches have come since the Aggies joined the SEC in 2012. The Razorbacks are 2-2 in matches played at Reed Arena.

LAST TIME OUT

Arkansas posted its eighth sweep of the season with a win over South Carolina (Oct. 13) in Fayetteville. Pilar Victoria and Hailey Dirrigl tied for the match lead with 13 kills each. The Razorbacks hit .327 in the match while holding South Carolina to a .091 mark.

RPI WATCH

In the third release of the NCAA RPI, the Razobacks are up two spots to No. 40 (Oct. 16) and are one of eight teams in the SEC among the top 50, including Texas A&M which is 27th in the index rankings.

OKI JOINS THE TOP 5

With her sixth dig at LSU (Oct. 8), junior libero Okiana Valle moved past Jasmine Norton (2009-12) into fifth place on Arkansas' all-time digs list. She enters Friday's match with 1,151 career digs, good for fourth in program history.

O'BRIEN EMERGING IN THE MIDDLE

With at least three blocks in each conference match, junior Kelly O'Brien enters Friday's match eighth in the league at 1.22 blocks per set against SEC opponents. She has four or more blocks in five of the last seven matches.

APPROACHING 1,000

Redshirt senior Pilar Victoria has amassed 950 kills in less than two seasons at Arkansas, and enters the weekend 50

ARKANSAS

.254	Hitting Pct	.202
13.96	Kills/Set	12.27
13.32	Assists/Set	11.42
14.32	Digs/Set	13.40
1.95	Blocks/Set	1.94
1.23	Aces/Set	1.31

TEXAS A&M

ARKANSAS

.254	Hitting Pct	.163
13.96	Kills/Set	11.54
13.32	Assists/Set	10.81
14.32	Digs/Set	12.44
1.95	Blocks/Set	1.74
1.23	Aces/Set	1.33

MISS. STATE

ARKANSAS

.254	Hitting Pct	.243
13.96	Kills/Set	13.39
13.32	Assists/Set	12.63
14.32	Digs/Set	13.95
1.95	Blocks/Set	1.87
1.23	Aces/Set	1.49

GEORGIA

kills shy of joining the program's 1,000-kill club. With 12 more kills, she will tie Meredith Hays (2013-14) for 16th place on Arkansas' career kills list. Victoria is the SEC and NCAA leader with 5.74 kills per set.

NOTHING LIKE BARNHILL

Spurred on by the fifth-largest crowd in program history, the Razorbacks posted a 3-2 win over Ole Miss (Oct. 6) at Barnhill Arena. The attendance of 1,428 marks the second top-10 home crowd of the year. Arkansas is 7-1 at home entering Sunday's match against Mississippi State.

TWO FOR 20

With their efforts at Alabama (Sept. 27), Pilar Victoria and Hailey Dirrigl became the first Razorback pair with 20 kills apiece since 2011. Victoria had 29 kills in the match while Dirrigl had a career-high 20 kills.

IT'S BEEN AWHILE

Freshman Hailey Dirrigl put down a career-high 20 kills at Alabama (Sept. 29), hitting .486 in the match. She became the first Arkansas freshman since 2009 (Jasmine Norton) with 20 kills in a match. In her last five matches, Dirrigl is averaging 3.62 kills per set on a .358 hitting percentage.

30 AND COUNTING...

With 30 kills against No. 3 Florida (Sept. 24), Pilar Victoria posted her fourth 30-kill performance of the season. Of the 22 30-kill efforts in the NCAA this year, she has four and is one of three with multiple.

DOUBLE-DOUBLE VS FLORIDA

With 54 assists and 11 digs against No. 3 Florida (Sept. 24), setter Rachel Rippee tallied her sixth double-double of the year and added a career-high five kills. She enters



ARKANSAS VOLLEYBALL QUICK FACTS

UNIVERSITY INFORMATION

Location _____ Fayetteville, Ark.
 Founded _____ March 27, 1871
 Enrollment _____ 27,194
 Nickname _____ Razorbacks
 School Colors _____ Cardinal, White
 Affiliation _____ NCAA Division I
 Conference _____ Southeastern (SEC)
 Chancellor _____ Dr. Joseph E Steinmetz
 Vice Chancellor/Dir. of Athletics _____ Jeff Long
 Faculty Athletic Representative _____ Gerald Jordan
 University Website _____ www.uark.edu
 Athletics Website _____ ArkansasRazorbacks.com

TEAM INFORMATION

2016 Overall Record _____ 9-21
 Conference Record _____ 7-11
 SEC Finish _____ t7th
 Home Record _____ 4-8
 Away Record _____ 4-9
 Neutral Record _____ 1-4
 Letterwinners Returning/Lost _____ 8/7
 Starters Returning/Lost _____ 3+L/5
 Newcomers _____ 9

COACHING STAFF

Head Coach _____ Jason Watson
 Record at Arkansas _____ 22-27 (.438)
 Career Record _____ 222-175 (.558)
 Associate Head Coach _____ Jon Newman-Gonchar
 Assistant Coach _____ Megan Wargo-Kearney
 Volunteer Assistant _____ Andy Rynd
 Director of Operations _____ Meredith Hays
 Volleyball Office Phone _____ 479/575-4587

TEAM HISTORY

All-Time Record _____ 460-312 (.597)/23 Seasons
 All-Time SEC Record _____ 236-167 (.588)
 NCAA Appearances/Last _____ 11/2013
 SEC Championships/Last _____ 1 (Tournament)/1997
 First Year of Volleyball _____ 1994

ATHLETICS COMMUNICATIONS

Asst AD for Communications _____ Patrick Pierson
 Associate Director _____ David Beall
 Associate Director _____ Jeri Thorpe
 Assistant Director _____ Joy Ekema-Agbaw
 Assistant Director (VB) _____ Zach Lawson
 Email _____ zlawson@uark.edu
 Office # _____ 479-575-7089
 Cell # _____ 479-595-2358
 Assistant Director _____ John Thomas
 Communications Assistant _____ Brent Hull
 Communications Assistant _____ Brandon Langlois
 Secretary _____ Mary Lynn Gibson

Mailing Address:

Arkansas Athletics Communications
 350 N. Razorback Road
 Fayetteville, AR 72703



2017 ARKANSAS RAZORBACKS | Front Row (l to r): Savannah Wagner, Kenzie Stinnett, Reagan Robinson, Okiana Valle, Kori Ortiz, Krista Kolbinskie, Paige Johnson, Klaire Trainor; Back Row (l to r): Maia Stripp, Hailey Dirrigl, Elizabeth Pamphile, Logan Brown, Rachel Rippee, Pilar Victoria, Kelly O'Brien, Fernanda Güitron, Kiley Tiller.

2017 ARKANSAS VOLLEYBALL ROSTER

#	Name	Position	Height	Class/Exp.	Hometown/Previous
1	Rachel Rippee	6-0	S	Soph./1L	Springfield, Mo./Kickapoo HS
2	Paige Johnson	5-6	L/DS	Fr./HS	Pleasant Hill, Mo./Pleasant Hill
3	Hailey Dirrigl	6-2	OH	Fr./HS	Phoenix, Ariz./Desert Vista HS
5	Kenzie Stinnett	5-9	S	Fr./HS	Carl Junction, Mo./Carl Junction
6	Fernanda Güitron	6-0	OPP	RSoph./1L	Guadalajara, Mexico/Jose Vasconcelos
7	Reagan Robinson	5-11	OH	Soph./1L	Fayetteville, Ark./Shiloh Christian HS
8	Elizabeth Pamphile	6-1	MB	Fr./HS	Orlando, Fla./Edgewater HS
9	Klaire Trainor	5-8	OH	Fr./HS	Springdale, Ark./Har-Ber HS
10	Kelly O'Brien	6-1	MB	Jr./1L	Long Beach, Calif./Wyoming
11	Kiley Tiller	6-3	MB	Fr./HS	Carthage, Mo./Carthage
12	Okiana Valle	5-2	L/DS	Jr./2L	Barceloneta, Puerto Rico/Christian Military
15	Maia Stripp	6-3	MB	Fr./HS	Roskilde, Denmark/Holte IF
16	Logan Brown	6-0	OH	Fr./HS	Dallas, Texas/Rowlett HS
17	Kori Ortiz	5-5	L/DS	Sr./3L	Southlake, Texas/Carroll HS
18	Savannah Wagner	5-9	OH	Fr./HS	Mt. Vernon, Texas/Mt. Vernon
21	Pilar Victoria	5-11	OH	RSr./1L	Caguas, Puerto Rico/Texas
23	Krista Kolbinskie	5-9	L/DS	Sr./1L	San Antonio, Texas/Reagan HS

Head Coach: Jason Watson/BYU, '95 (Second Season/13th Overall)

Associate Head Coach: Jon Newman-Gonchar/Northern Arizona, '05 (Second Season)

Assistant Coach: Megan Wargo-Kearney/Gettysburg College, '02 (First Season)

Volunteer Assistant: Andy Rynd/Bowling Green, '15 (Second Season)

Director of Operations: Meredith Hays/Arkansas, '13 (First Season)

Student Managers: Kelley Goldberg, Jonathan Roark and Hazel Rogers

How Do You Say...

Rachel Rippee _____ rippy
 Hailey Dirrigl _____ dur-gull
 Kenzie Stinnett _____ sten-it
 Fernanda Güitron _____ gwee-troan
 Elizabeth Pamphile _____ pam-feel
 Okiana Valle _____ oak-EE-on-uh VY-yay
 Krista Kolbinskie _____ coal-BEN-ski
 Andy Rynd _____ rend



MATCH-BY-MATCH STARTERS

CSU Bakersfield
ULM
Utah State
at Kansas State
vs #6 Wisconsin
vs Syracuse
Oral Roberts
vs #19 USC
vs Yale
at UCSB
vs Sam Houston State
at SMU
Tennessee
#3 Florida
at Alabama
at Auburn
Ole Miss
at LSU
South Carolina
at Texas A&M
Mississippi State
at Georgia
at Ole Miss
LSU
Texas A&M
at Florida
at South Carolina
at Missouri
Kentucky
Auburn

Rippee, Pamphile, O'Brien, Ortiz, Victoria, Kolbinskie, Valle
Rippee, Johnson, Pamphile, O'Brien, Victoria, Kolbinskie, Valle
Rippee, Pamphile, O'Brien, Ortiz, Victoria, Kolbinskie, Valle
Rippee, Pamphile, O'Brien, Ortiz, Victoria, Kolbinskie, Valle
Rippee, Pamphile, O'Brien, Ortiz, Victoria, Kolbinskie, Valle
Rippee, Pamphile, O'Brien, Ortiz, Victoria, Kolbinskie, Valle
Rippee, Pamphile, O'Brien, Ortiz, Victoria, Kolbinskie, Valle
Rippee, Pamphile, O'Brien, Ortiz, Victoria, Kolbinskie, Valle
Rippee, Pamphile, O'Brien, Ortiz, Victoria, Kolbinskie, Valle
Rippee, Pamphile, O'Brien, Ortiz, Victoria, Kolbinskie, Valle
Rippee, Dirrigl, Pamphile, O'Brien, Ortiz, Victoria, Kolbinskie, Valle
Rippee, Johnson, Pamphile, O'Brien, Ortiz, Victoria, Kolbinskie, Valle
Rippee, Pamphile, O'Brien, Ortiz, Victoria, Kolbinskie, Valle
Rippee, Pamphile, O'Brien, Ortiz, Victoria, Kolbinskie, Valle
Rippee, Pamphile, O'Brien, Ortiz, Victoria, Kolbinskie, Valle
Rippee, Pamphile, O'Brien, Ortiz, Victoria, Kolbinskie, Valle
Rippee, Johnson, Pamphile, O'Brien, Ortiz, Victoria, Kolbinskie, Valle
Rippee, Johnson, Pamphile, O'Brien, Ortiz, Victoria, Kolbinskie, Valle
Rippee, Pamphile, O'Brien, Ortiz, Victoria, Kolbinskie, Valle

Friday's match second in the SEC and 14th in the NCAA with 11.47 assists per set.

MIDDLE DUO

In the Razorbacks' win over Tennessee (Sept. 20), middles Elizabeth Pamphile and Kelly O'Brien combined for 19 kills and a .517 hitting percentage. Pamphile and O'Brien each tied career highs with 12 and seven kills, respectively.

NON-CONFERENCE SNAPSHOT

For the fourth time in program history, Arkansas went into SEC play with double-digit wins. The Razorbacks previously hit the mark in 1997, 1999 and 2015. The team faced four teams that played in last year's NCAA Tournament and its only losses came to No. 6 Wisconsin and No. 19 USC.

MAKE IT THREE

For a third-straight week, team co-captain Pilar Victoria was named SEC Offensive Player of the Week (Sept. 18), the fifth weekly conference honor of her career. She tallied two Player of the Week selections in 2015.

1,000-DIG CLUB

With her second dig at UCSB (Sept. 9), junior libero Okiana Valle became the 10th Razorback with 1,000 career digs. She finished the match against the Gauchos with 15 digs.

RIPPEE DISHES IT OUT

In directing the team to a .348 hitting percentage, setter Rachel Rippee dished out 50 assists in Arkansas' sweep of Yale (Sept. 8). With the performance, she became just the fourth Arkansas setter with 50 or more assists in a three-set match and first since 2003.

HEY HAILEY

Freshman Hailey Dirrigl registered 10 or more kills in five of six matches entering league play. She had a then-career best of 14 kills against No. 19 USC (Sept. 8) and tallied 10 kills in the non-conference finale at SMU (Sept. 16).

CAN YOU DIG IT?

Arkansas' 56 digs in a sweep of Oral Roberts (Sept. 5) are

the most by the program in a three-set match since 2012. Libero Okiana Valle had a match-high 14 digs while Krista Kolbinskie registered a then-career best with 11 digs.

RIPPEE CRACKS TOP 10

With her 23rd assist against Oral Roberts (Sept. 5), setter Rachel Rippee moved into the program's career top 10 for career assists. She dished a career-high 59 assists at SMU (Sept. 16) and is currently seventh on Arkansas' top-10 list with 1,804 career assists.

BIG WIN IN THE LITTLE APPLE

Arkansas' five-set win over Kansas State (Aug. 31) was the program's first ever in Manhattan. The Razorbacks had lost the previous five meetings on the Wildcats' home floor and picked up the program's third win in the series.

ALL-TOURNAMENT IN THE LITTLE APPLE

In recognition of their standout showing, Pilar Victoria and Elizabeth Pamphile were named to the K-State Invitational All-Tournament Team. Victoria averaged 6.73 kills per set while hitting .381 while Pamphile tallied 2.09 kills per set and a .340 hitting percentage in the tournament.

RIPPEE GARNERS SEC ACCOLADES

Averaging 11.80 assists per set and directing the offense to a .274 hitting percentage during the Arkansas Classic, Rachel Rippee was named the SEC Setter of the Week. She is the second Razorback (Adrien Wohlschlaeger) to win the award since its inception in 2015.

TOP-10 OUTBURST

Arkansas beat Utah State (Aug. 26) behind its .422 team hitting percentage, the 10th-highest single-match figure in program history. After committing seven attack errors in the opening set, the Razorbacks had just three combined errors in the next two sets.

WELCOME BACK, PILAR

Redshirt senior Pilar Victoria made the most of her return, averaging 6.80 kills per set while hitting .406 during the Arkansas Classic. She had at least 19 kills in each match,

WHAT HAPPENS WHEN...

OVERALL	13-6
SEC	3-4
HOME	7-1
AWAY	3-3
NEUTRAL	3-2
VS RANKED OPPONENTS	0-3

BY SETS

THREE SETS	8-2
FOUR SETS	1-0
FIVE SETS	4-4
WIN FIRST SET	11-1
LOSE FIRST SET	2-5
WIN SECOND SET	11-3
LOSE SECOND SET	2-3
WIN FIRST TWO SETS	9-0
LOSE FIRST TWO SETS	0-2
SPLIT FIRST TWO SETS	4-4

STATISTICAL

MORE KILLS THAN OPPONENT	13-2
FEWER KILLS THAN OPPONENT	0-3
KILLS ARE TIED	0-1
MORE DIGS THAN OPPONENT	11-1
FEWER DIGS THAN OPPONENT	2-4
DIGS ARE TIED	0-0
MORE BLOCKS THAN OPPONENT	5-3
FEWER BLOCKS THAN OPPONENT	8-3
BLOCKS ARE TIED	0-0
MORE ACES THAN OPPONENT	9-3
FEWER ACES THAN OPPONENT	3-3
ACES ARE TIED	1-0
HIGHER HITTING PCT	13-0
LOWER HITTING PCT	0-6
HITTING PCT TIED	0-0

HITTING PERCENTAGE

.400 OR BETTER	1-0
.300-.399	4-0
.200-.299	7-3
.100-.199	1-3
.000-.099	0-0
NEGATIVE	0-0

OPPONENT HITTING PERCENTAGE

.400 OR BETTER	0-1
.300-.399	0-0
.200-.299	6-4
.100-.199	4-1
.000-.099	3-0
NEGATIVE	0-0

BY DAY

TUESDAY	1-0
WEDNESDAY	1-1
THURSDAY	1-0
FRIDAY	5-2
SATURDAY	5-0
SUNDAY	0-3

BY MONTH

AUGUST	4-0
SEPTEMBER	7-4
OCTOBER	2-2
NOVEMBER	0-0
DECEMBER	0-0



2017 AWARDS & HONORS

Hailey Dirrigl

UCSB Thunderdome Classic All-Tournament

Elizabeth Pamphile

K-State Invitational All-Tournament

SMU Doubletree Classic All-Tournament

Rachel Rippee

Arkansas Classic All-Tournament

SEC Setter of the Week (Aug. 28)

Okiana Valle

SMU Doubletree Classic All-Tournament (Best Libero)

Pilar Victoria

Preseason All-SEC

Arkansas Classic All-Tournament (MVP)

K-State Invitational All-Tournament

SEC Player of the Week (Sept. 5)

UCSB Thunderdome Classic All-Tournament (MVP)

SEC Offensive Player of the Week (Sept. 11)

SMU Doubletree Classic All-Tournament (MVP)

SEC Offensive Player of the Week (Sept. 18)

WELCOME TO BARNHILL ARENA

Top Single-Match Attendance

1.	3,015 vs #13 Florida	9-14-12
2.	2,349 vs South Carolina	11-19-14
3.	1,672 vs Missouri	10-02-13
4.	1,463 vs Tennessee State	8-29-14
5.	1,428 vs Ole Miss	10-6-17
6.	1,407 vs #15 Colorado State	8-26-11
7.	1,362 vs #5 Florida*	11-22-98
8.	1,343 vs #3 Florida	9-24-17
9.	1,342 vs McNeese State	8-28-15
10.	1,284 vs Kansas	8-29-15

* - 1998 SEC Tournament

Year-by-Year Attendance Totals

Year	# of Matches	Total	Avg.
1994	15	6,548	437
1995	13	6,194	477
1996	18	8,296	461
1997	15	8,101	540
1998	19	13,299	700
1999	14	6,315	451
2000	17	7,499	441
2001	11	5,794	527
2002	16	7,127	451
2003	11	5,683	517
2004	14	8,254	590
2005	14	9,365	669
2006	14	9,817	701
2007	16	10,919	682
2008	14	9,086	649
2009	14	10,316	737
2010	14	11,855	847
2011	14	12,903	922
2012	18	18,297	1,016
2013	15	13,047	870
2014	16	15,265	954
2015	15	14,697	980
2016	11	9,149	832
2017	8	7,914	989

HEAD COACH JASON WATSON | 2ND YEAR AT ARKANSAS (13TH OVERALL)



Jason Watson was named the head coach of the University of Arkansas volleyball team on January 7, 2016, to become the third head coach in program history. In 11 prior seasons as a head coach at BYU (2005-07) and Arizona State (2008-15), Watson enters the 2017 season with a 209-169 (.553) record and has guided his teams to seven NCAA Tournament selections.

The Razorbacks matched their SEC output from the previous season with a 7-11 mark in league play during Watson's first year including six wins in their last nine matches of the year. Individually, senior Danielle Harbin emerged to finish third in the SEC with 4.22 kills per set on her way to AVCA All-South Region honors.

In eight years in Tempe, Ariz., Watson transformed ASU Volleyball from a perennial sub-.500 program into a postseason regular. In his last four seasons, the Sun Devils averaged more than 19 wins per season with four consecutive bids to the NCAA Tournament. Watson also coached a pair of All-America performers, one in each of the past two seasons, for ASU's first national honorees since 2000.

Arizona State began the 2015 campaign with a 15-0 record and reached as high as No. 5 in the AVCA Top 25 poll. The Sun Devils also opened conference play with their best start in the Pac-10/12 era with four wins including the program's first win over Stanford in 15 years.

In 2014, ASU opened the season with six straight wins on the way to a 20-14 record. The Sun Devils were ranked in each AVCA regular season poll. Making its third straight trip to the NCAA Tournament, ASU defeated Texas A&M 3-1 to advance to the second round of the Tournament for the first time since 2006.

Watson led ASU to a 19-13 overall record in 2013 including a 3-0 upset of then-NCAA defending champion Texas. The Sun Devils started the season without dropping a set in their first seven matches. Making its second consecutive NCAA Tournament appearance, ASU dropped a five-set match to BYU in the first round.

In 2012, the Sun Devil squad opened with an 11-2 record, the best start since 1992. The Sun Devils finished with 20 wins - the most in a single season at ASU since 1993. The nine conference wins equaled the most since 2000. ASU made the program's 16th appearance in the NCAA Tournament and Watson became just the fifth coach from ASU to guide the Sun Devils to a NCAA postseason berth.

Watson arrived as the head coach at ASU in 2008. In 2013, he was also named head coach of the sand volleyball team when the sport was added to the athletics program.

In June 2015, Watson was selected by USA Volleyball to serve as the head coach of the U.S. Collegiate National Team on a six-match tour of China.

In his three seasons at the helm of the BYU program, Watson compiled a 74-18 (.804) overall record while leading BYU to three-straight NCAA Tournament appearances. During his first season as head coach, Watson was named Mountain West Conference Coach of the Year after leading his team to a 25-4 record, the program's best mark since 1998. In addition to leading BYU to the MWC regular-season title, Watson also helped lead the Cougars back to the NCAA Tournament.

In 2007, he led the Cougars to a 24-8 overall record and an Elite 8 finish in the NCAA Regional Final. His team also finished the year ranked 12th nationally, and at one point through the season, the Cougars held a rank as high as ninth in the country. No stranger to the best competition, Watson's teams have been ranked as high as eighth on RPI, showing the character and strength of the teams he builds. Never backing down from challenges are also another hallmark trait of Watson-led teams.

Prior to his head-coaching debut, Watson had amassed 11 years as an assistant coach at four universities. After an All-American playing career at BYU, Watson coached for two years under his former coach, Carl McGown, before beginning his career in women's volleyball with extremely successful stints at Kansas State, Arkansas State, and Montana State.

Watson had an All-American playing career at BYU from 1990-1994, where he was a four-year starter and two-time captain. He graduated from BYU in 1995 with a degree in physical education and sports business management after leaving his native home of Homebush, Australia.

He and his wife, Larissa, have two sons and a daughter.

WATSON YEAR-BY-YEAR

Year	School	Overall	Conf.	Postseason
2005	BYU	25-4	14-2	NCAA 1st Round
2006	BYU	25-6	13-3	NCAA 1st Round
2007	BYU	24-8	12-4	NCAA Reg. Final
2008	Arizona State	13-18	4-14	--
2009	Arizona State	13-17	3-15	--
2010	Arizona State	13-18	7-11	--
2011	Arizona State	9-22	5-17	--
2012	Arizona State	20-14	9-11	NCAA 1st Round
2013	Arizona State	19-14	8-12	NCAA 1st Round
2014	Arizona State	20-14	9-11	NCAA 2nd Round
2015	Arizona State	19-13	8-12	NCAA 1st Round
2016	Arkansas	9-21	7-11	--
2017	Arkansas	13-6	3-4	--
13 seasons		222-175	102-127	7 appearances



MILESTONE WATCH

Hailey Dirrigl (OPP | Fr.)

Looking for: 250 kills	Current Total: 190	Needs: 60
------------------------	--------------------	-----------

Kori Ortiz (L/DS | Jr.)

Looking for: 783 digs (ARKVB #18)	Current Total: 698	Needs: 85
-----------------------------------	--------------------	-----------

Rachel Rippee (S | Soph.)

Looking for: 1,968 assists (ARKVB #6)	Current Total: 1,841	Needs: 127
---------------------------------------	----------------------	------------

Okiana Valle (Jr. | L/DS)

Looking for: 1,277 digs (ARKVB #3)	Current Total: 1,151	Needs: 126
------------------------------------	----------------------	------------

Pilar Victoria (R-Sr. | OH)

Looking for 962 kills (ARKVB #16)	Current Total: 950	Needs: 12
Looking for 1,000 kills (career)	Current Total: 950	Needs: 50

2017 DOUBLE-DOUBLES

1	Rachel Rippee	39 assists, 12 digs	vs CSU Bakersfield	8-25-17
2	Pilar Victoria	23 kills, 14 digs	vs CSU Bakersfield	8-25-17
3	Pilar Victoria	34 kills, 14 digs	at Kansas State	8-31-17
4	Rachel Rippee	46 assists, 10 digs	vs Oral Roberts	9-5-17
5	Pilar Victoria	19 kills, 12 digs	vs Oral Roberts	9-5-17
6	Rachel Rippee	49 assists, 10 digs	vs #19 USC	9-8-17
7	Pilar Victoria	29 kills, 15 digs	vs #19 USC	9-8-17
8	Pilar Victoria	16 kills, 12 digs	vs Yale	9-8-17
9	Rachel Rippee	52 assists, 15 digs	at UCSB	9-9-17
10	Pilar Victoria	32 kills, 12 digs	at UCSB	9-9-17
11	Rachel Rippee	59 assists, 14 digs	at SMU	9-16-17
12	Pilar Victoria	31 kills, 10 digs	at SMU	9-16-17
13	Rachel Rippee	54 assists, 11 digs	vs #3 Florida	9-24-17
14	Rachel Rippee	59 assists, 10 digs	at Alabama	9-27-17
15	Pilar Victoria	29 kills, 15 digs	at Alabama	9-27-17
16	Rachel Rippee	53 assists, 12 digs	vs Ole Miss	10-6-17
17	Pilar Victoria	24 kills, 14 digs	vs Ole Miss	10-6-17
18	Pilar Victoria	21 kills, 14 digs	at LSU	10-8-17
19	Pilar Victoria	13 kills, 16 digs	vs South Carolina	10-13-17

Season Count: Victoria (11), Rippee (8) | Career Count: Victoria (26), Rippee (15)

including a 26-kill showing against Utah State (Aug. 26).

AYE AYE, CAPTAIN

By way of a team vote, seniors Kori Ortiz and Pilar Victoria will serve as the Razorbacks' team captains. Ortiz enters the season with 600 career digs while Victoria returns to the floor after a redshirt season in 2016.

FRESH(MAN) FACES

Arkansas heads into the 2017 season with nine freshmen on the roster, the most in program history. Previously, the high was six freshmen on five other occasions, most recently in 2014. The latest incoming class earned Highest Honorable Mention accolades from PrepVolleyball.com.

ACROSS THE NET

As part of their 2017 slate, the Razorbacks are scheduled to play 10 matches against eight teams that advanced to last year's NCAA Tournament. Arkansas will also face eight teams that appear in the AVCA preseason poll.

WHAT SAY YOU, COACHES?

For a second-consecutive year, redshirt senior Pilar Victoria was named to the All-SEC Preseason Team. She tallied 525 kills in 2015 but missed last season with an injury. In the SEC preseason coaches poll, Arkansas was picked to finish eighth in the league.

ACADEMIC SUCCESS

For the second time in program history, Arkansas earned an AVCA Team Academic Award for the 2016-17 academic year. To be recognized, teams had to maintain a collective 3.30 or higher cumulative GPA. The team was previously honored for the 2014-15 academic year.

SEC STANDINGS

School	SEC	Overall	Streak
#6 Kentucky	7-0	16-2	W11
#4 Florida	6-1	14-1	L1
LSU	7-2	16-4	W5
Missouri	5-2	12-8	L1
Auburn	4-5	11-7	L4
Ole Miss	4-5	13-9	L1
ARKANSAS	3-4	13-6	W1
South Carolina	3-4	10-9	W1
Texas A&M	3-4	6-8	W1
Georgia	3-5	13-8	W1
Tennessee	3-5	10-7	W2
Alabama	2-5	14-7	L1
Mississippi State	0-8	9-14	L8

AVCA TOP 25 (Week 8 - Oct. 16)

Rank	Team	'17 Record	LW
1	Penn State (48)	17-1	2
2	Stanford (12)	15-2	3
3	Texas (1)	14-2	5
4	Florida^ (2)	14-1	1
5	Minnesota	17-2	6
6	Kentucky^ (1)	16-2	8
7	Nebraska	14-4	4
8	BYU	19-1	7
9	Wisconsin^	13-4	11
10	Michigan State	13-4	10
11	Kansas	16-3	9
12	Utah	16-3	13
13	UCLA	12-5	12
14	Washington	15-4	14
15	Oregon	11-5	15
16	Creighton	14-5	17
17	Purdue	15-4	16
18	San Diego	14-4	18
19	Southern California^	14-5	19
20	Colorado State	18-2	21
21	Wichita State	16-3	22
22	Iowa State	12-4	23
23	Cal Poly	17-2	24
24	Baylor	16-4	25
25	Northern Iowa	17-5	20

Receiving Votes | Western Kentucky, Illinois, Missouri State, Michigan, Colorado, Pittsburgh, Oregon State, VCU.

^ - 2017 opponent



SEASON & CAREER HIGHS

#1 RACHEL RIPPEE | SO | S

SEASON HIGHS

Hitting % _____ --
 Kills _____ 5 vs #3 Florida | 9-24-17
 Attempts _____ 10 at Kansas State | 8-31-17
 Assists _____ *59 at Alabama | 9-27-17
 Digs _____ 15 at UCSB | 9-9-17
 Blocks _____ 6.0 (1-5) vs Ole Miss | 10-6-17
 Aces _____ 3 vs CSU Bakersfield | 8-25-17

CAREER HIGHS

Hitting % _____ --
 Kills _____ 5 vs #3 Florida | 9-24-17
 Attempts _____ 10 at Kansas State | 8-31-17
 Assists _____ *59 at Alabama | 9-27-17
 Digs _____ 15 at UCSB | 9-9-17
 Blocks _____ *6.0 (1-5) vs Ole Miss | 10-6-17
 Aces _____ 6 vs Georgia | 10-30-16

#2 PAIGE JOHNSON | FR | L/DS

SEASON HIGHS

Hitting % _____ --
 Kills _____ --
 Attempts _____ --
 Assists _____ 2 vs Ole Miss | 10-6-17
 Digs _____ *11 vs Ole Miss | 10-6-17
 Blocks _____ --
 Aces _____ 3 vs Oral Roberts | 9-5-17

CAREER HIGHS

Hitting % _____ --
 Kills _____ --
 Attempts _____ --
 Assists _____ 2 vs Ole Miss | 10-6-17
 Digs _____ *11 vs Ole Miss | 10-6-17
 Blocks _____ --
 Aces _____ 3 vs Oral Roberts | 9-5-17

#3 HAILEY DIRRIGL | FR | OH

SEASON HIGHS

Hitting % _____ .500 (13-3-20) vs Yale | 9-8-17
 Kills _____ 20 at Alabama | 9-27-17
 Attempts _____ 37 at UCSB | 9-9-17
 Assists _____ --
 Digs _____ *3 vs South Carolina | 10-13-17
 Blocks _____ 6.0 (0-6) vs CSU Bakersfield | 8-25-17
 Aces _____ *1 vs South Carolina | 10-13-17

CAREER HIGHS

Hitting % _____ .500 (13-3-20) vs Yale | 9-8-17
 Kills _____ 20 at Alabama | 9-27-17
 Attempts _____ 37 at UCSB | 9-9-17
 Assists _____ --
 Digs _____ *3 vs South Carolina | 10-13-17
 Blocks _____ 6.0 (0-6) vs CSU Bakersfield | 8-25-17
 Aces _____ *1 vs South Carolina | 10-13-17

#5 KENZIE STINNETT | FR | S

SEASON HIGHS

Hitting % _____
 Kills _____
 Attempts _____
 Assists _____
 Digs _____
 Blocks _____
 Aces _____

CAREER HIGHS

Hitting % _____
 Kills _____
 Attempts _____
 Assists _____
 Digs _____
 Blocks _____
 Aces _____

#6 FERNANDA GUITRON | R-SO | OPP

SEASON HIGHS

Hitting % _____ .364 (4-0-11) vs South Carolina | 10-13-17
 Kills _____ 4 vs South Carolina | 10-13-17
 Attempts _____ 11 vs South Carolina | 10-13-17
 Assists _____ --
 Digs _____ 2 vs South Carolina | 10-13-17
 Blocks _____ 2.0 (0-2) vs South Carolina | 10-13-17
 Aces _____ --

CAREER HIGHS

Hitting % _____ .364 (4-0-11) vs South Carolina | 10-13-17
 Kills _____ 5 at New Mexico | 9-8-16
 Attempts _____ 24 vs. Maryland | 9-2-16
 Assists _____ --
 Digs _____ 3 vs. Maryland | 9-2-16
 Blocks _____ *2.0 (0-2) vs South Carolina | 10-13-17
 Aces _____ --

#7 REAGAN ROBINSON | SO | OH

SEASON HIGHS

Hitting % _____ .458 (12-1-24) vs Utah State | 8-26-17
 Kills _____ 13 at Alabama | 9-27-17
 Attempts _____ 41 at SMU | 9-16-17
 Assists _____ 2 vs #3 Florida | 9-24-17
 Digs _____ 7 at Alabama | 9-27-17
 Blocks _____ *2.0 (1-1) at LSU | 10-8-17
 Aces _____ 2 at Kansas State | 8-31-17

CAREER HIGHS

Hitting % _____ .458 (12-1-24) vs Utah State | 8-26-17
 Kills _____ 13 at Alabama | 9-27-17
 Attempts _____ 41 at SMU | 9-16-17
 Assists _____ 2 vs #3 Florida | 9-24-17
 Digs _____ 12 at #23 Kentucky | 10-14-16
 Blocks _____ *2.0 (1-1) at LSU | 10-8-17
 Aces _____ *2 at Kansas State | 8-31-17

#8 ELIZABETH PAMPHILE | FR | MB

SEASON HIGHS

Hitting % _____ .778 (7-0-9) vs ULM | 8-26-17
 Kills _____ *12 vs Tennessee | 9-20-17
 Attempts _____ 24 vs CSU Bakersfield | 8-25-17
 Assists _____ *1 at Alabama | 9-27-17
 Digs _____ *4 vs #6 Wisconsin | 9-2-17
 Blocks _____ 7.0 (0-7) vs #19 USC | 9-8-17
 Aces _____ *1 at Auburn | 10-1-17

CAREER HIGHS

Hitting % _____ .778 (7-0-9) vs ULM | 8-26-17
 Kills _____ *12 vs Tennessee | 9-20-17
 Attempts _____ 24 vs CSU Bakersfield | 8-25-17
 Assists _____ *1 at Alabama | 9-27-17
 Digs _____ *4 vs #6 Wisconsin | 9-2-17
 Blocks _____ 7.0 (0-7) vs #19 USC | 9-8-17
 Aces _____ *1 at Auburn | 10-1-17

#9 KLAIRE TRAINOR | FR | OH

SEASON HIGHS

Hitting % _____ --
 Kills _____ 4 vs ULM | 8-26-17
 Attempts _____ 15 vs ULM | 8-26-17
 Assists _____ --
 Digs _____ 3 vs ULM | 8-26-17
 Blocks _____ 1.0 (0-1) vs ULM | 8-26-17
 Aces _____ *1 vs Sam Houston State | 9-15-17

CAREER HIGHS

Hitting % _____ --
 Kills _____ 4 vs ULM | 8-26-17
 Attempts _____ 15 vs ULM | 8-26-17
 Assists _____ --
 Digs _____ 3 vs ULM | 8-26-17
 Blocks _____ 1.0 (0-1) vs ULM | 8-26-17
 Aces _____ *1 vs Sam Houston State | 9-15-17

#10 KELLY O'BRIEN | JR | OH

SEASON HIGHS

Hitting % _____ .600 (6-0-10) vs Syracuse | 9-2-17
 Kills _____ *7 at LSU | 10-8-17
 Attempts _____ 14 vs Ole Miss | 10-6-17
 Assists _____ *1 at UCSB | 9-9-17
 Digs _____ 3 at Alabama | 9-27-17
 Blocks _____ 9.0 (0-9) at SMU | 9-16-17
 Aces _____ --

CAREER HIGHS (at Arkansas)

Hitting % _____ .600 (6-0-10) vs Syracuse | 9-2-17
 Kills _____ *7 at LSU | 10-8-17
 Attempts _____ 14 vs Ole Miss | 10-6-17
 Assists _____ *1 at UCSB | 9-9-17
 Digs _____ 3 at Alabama | 9-27-17
 Blocks _____ 9.0 (0-9) at SMU | 9-16-17
 Aces _____ --

#11 KILEY TILLER | FR | MB

SEASON HIGHS

Hitting % _____
 Kills _____
 Attempts _____
 Assists _____
 Digs _____
 Blocks _____
 Aces _____

CAREER HIGHS

Hitting % _____
 Kills _____
 Attempts _____
 Assists _____
 Digs _____
 Blocks _____
 Aces _____

#12 OKIANA VALLE | JR | L/DS

SEASON HIGHS

Hitting % _____ --
 Kills _____ 1 vs #19 USC | 9-8-17
 Attempts _____ 2 vs CSU Bakersfield | 8-25-17
 Assists _____ 7 vs Ole Miss | 10-6-17
 Digs _____ 26 at Alabama | 9-27-17
 Blocks _____ --
 Aces _____ 4 vs ULM | 8-26-17

CAREER HIGHS

Hitting % _____ --
 Kills _____ *1 vs #19 USC | 9-8-17
 Attempts _____ *3 vs. South Carolina | 11-25-15
 Assists _____ 9 at #4 Kansas | 9-3-16
 Digs _____ 32 vs. South Carolina | 11-25-15
 Blocks _____ --
 Aces _____ *4 vs ULM | 8-26-17

#15 MAIA STRIPP | FR | MB

SEASON HIGHS

Hitting % _____
 Kills _____
 Attempts _____
 Assists _____
 Digs _____
 Blocks _____
 Aces _____

CAREER HIGHS

Hitting % _____
 Kills _____
 Attempts _____
 Assists _____
 Digs _____
 Blocks _____
 Aces _____



SEASON & CAREER HIGHS

#16 LOGAN BROWN | FR | OH

SEASON HIGHS

Hitting % .269 (9-2-26) vs Sam Houston State | 9-15-17
 Kills 9 vs Sam Houston State | 9-15-17
 Attempts 30 at UCSB | 9-9-17
 Assists 1 at UCSB | 9-9-17
 Digs 7 at UCSB | 9-9-17
 Blocks 3.0 (0-3) vs #19 USC | 9-8-17
 Aces *1 at UCSB | 9-9-17

CAREER HIGHS

Hitting % .269 (9-2-26) vs Sam Houston State | 9-15-17
 Kills 9 vs Sam Houston State | 9-15-17
 Attempts 30 at UCSB | 9-9-17
 Assists 1 at UCSB | 9-9-17
 Digs 7 at UCSB | 9-9-17
 Blocks 3.0 (0-3) vs #19 USC | 9-8-17
 Aces *1 at UCSB | 9-9-17

#17 KORI ORTIZ | SR | L/DS

SEASON HIGHS

Hitting % --
 Kills 1 at LSU | 10-8-17
 Attempts 1 at LSU | 10-8-17
 Assists *1 vs South Carolina | 10-13-17
 Digs 11 at SMU | 9-16-17
 Blocks --
 Aces *1 at UCSB | 9-9-17

CAREER HIGHS

Hitting % --
 Kills *1 at LSU | 10-8-17
 Attempts *2 vs. South Dakota | 9-12-14
 Assists 6 vs. Army | 8-29-15
 Digs 18 vs. Kansas State | 9-19-15
 Blocks --
 Aces *1 at UCSB | 9-9-17

#18 SAVANNAH WAGNER | FR | OH

SEASON HIGHS

Hitting % --
 Kills --
 Attempts --
 Assists --
 Digs --
 Blocks --
 Aces --

CAREER HIGHS

Hitting % --
 Kills --
 Attempts --
 Assists --
 Digs --
 Blocks --
 Aces --

#21 PILAR VICTORIA | R-SR | OH

SEASON HIGHS

Hitting % .692 (19-1-26) vs ULM | 8-26-17
 Kills 34 at Kansas State | 8-31-17
 Attempts 82 at Alabama | 9-27-17
 Assists 4 vs #19 USC | 9-8-17
 Digs 16 vs South Carolina | 10-13-17
 Blocks 6.0 (0-6) at LSU | 10-8-17
 Aces *3 at LSU | 10-8-17

CAREER HIGHS (at Arkansas)

Hitting % .692 (19-1-26) vs ULM | 8-26-17
 Kills 35 vs. Ole Miss | 10-18-15
 Attempts 82 at Alabama | 9-27-17
 Assists 4 vs #19 USC | 9-8-17
 Digs 19 at LSU | 9-23-15
 Blocks *6.0 (0-6) at LSU | 10-8-17
 Aces *3 at LSU | 10-8-17

#23 KRISTA KOLBINSKIE | SR | L/DS

SEASON HIGHS

Hitting % --
 Kills --
 Attempts *1 vs Tennessee | 9-20-17
 Assists 3 at UCSB | 9-9-17
 Digs *16 at LSU | 10-8-17
 Blocks --
 Aces 3 vs ULM | 8-26-17

CAREER HIGHS

Hitting % --
 Kills --
 Attempts 3 at #24 Kansas | 9-20-14
 Assists 3 at UCSB | 9-9-17
 Digs *16 at LSU | 10-8-17
 Blocks --
 Aces 3 vs ULM | 8-26-17

*Tied, most recent listed



OVERALL SEASON STATISTICS

RECORD:	OVERALL	HOME	AWAY	NEUTRAL
ALL GAMES	13-6	7-1	3-3	3-2
CONFERENCE	3-4	3-1	0-3	0-0
NON-CONFERENCE	10-2	4-0	3-0	3-2

#	Player	sp	Attack					Set		Serve			re	Dig		Blocking							points
			k	k/s	e	ta	pct	a	a/s	sa	se	sa/s		dig	dig/s	bs	ba	total	blk/s	be	bhe		
17	Kori Ortiz	63	1	0.02	0	1	1.000	6	0.10	3	5	0.05	13	98	1.56	0	0	0	0.00	0	1	4.0	
10	Kelly O'Brien	74	83	1.12	27	177	.316	2	0.03	0	0	0.00	1	10	0.14	3	73	76	1.03	9	0	122.5	
21	Pilar Victoria	74	425	5.74	136	979	.295	23	0.31	21	22	0.28	8	212	2.86	5	40	45	0.61	2	1	471.0	
8	Elizabeth Pamphile	74	145	1.96	55	314	.287	3	0.04	3	24	0.04	0	33	0.45	2	55	57	0.77	5	1	177.5	
3	Hailey Dirrigl	74	190	2.57	73	474	.247	0	0.00	2	2	0.03	1	21	0.28	1	35	36	0.49	2	0	210.5	
7	Reagan Robinson	58	132	2.28	57	407	.184	4	0.07	4	17	0.07	6	33	0.57	1	10	11	0.19	3	0	142.0	
6	Fernanda Guitron	4	4	1.00	2	15	.133	0	0.00	0	0	0.00	0	3	0.75	0	2	2	0.50	1	0	5.0	
1	Rachel Rippee	74	24	0.32	15	71	.127	849	11.47	15	30	0.20	0	153	2.07	2	38	40	0.54	5	14	60.0	
16	Logan Brown	17	24	1.41	12	101	.119	1	0.06	2	7	0.12	3	11	0.65	0	6	6	0.35	1	0	29.0	
23	Krista Kolbinskie	74	0	0.00	0	2	.000	14	0.19	12	19	0.16	0	167	2.26	0	0	0	0.00	0	4	12.0	
12	Okiana Valle	74	1	0.01	1	6	.000	78	1.05	17	38	0.23	10	259	3.50	0	0	0	0.00	0	0	18.0	
2	Paige Johnson	68	0	0.00	0	0	.000	6	0.09	10	5	0.15	2	56	0.82	0	0	0	0.00	0	1	10.0	
9	Klaire Trainor	11	4	0.36	5	15	-.067	0	0.00	2	2	0.18	0	4	0.36	0	1	1	0.09	0	0	6.5	
	TEAM	-	-	-	-	-	-	-	-	-	-	-	14	-	-	-	-	-	-	-	-	-	
	ARKANSAS	74	1033	13.96	383	2562	.254	986	13.32	91	171	1.23	58	1060	14.32	14	260	144.0	1.95	28	22	1268.0	
	Opponents	74	859	11.61	366	2434	.203	815	11.01	58	139	0.78	91	961	12.99	22	312	178.0	2.41	58	27	1095.0	

Team Statistics	AR	OPP
ATTACK		
Kills	1033	859
Errors	383	366
Total Attacks	2562	2434
Attack Pct	.254	.203
Kills/Set	14.0	11.6
SET		
Assists	986	815
Attempts	2522	2423
Assist Pct	.391	.336
Assists/Set	13.3	11.0
SERVE		
Aces	91	58
Errors	171	139
Aces/Set	1.2	0.8
SERVE RECEPTIONS		
Errors	58	91
Errors/Set	0.8	1.2
Attempts	1378	1485
Reception Pct	.958	.939
DEFENSE		
Digs	1060	961
Digs/Set	14.3	13.0
BLOCKING		
Block Solo	14	22
Block Assist	260	312
Total Blocks	144.0	178.0
Blocks/Set	1.9	2.4
Block Errors	28	58
Ball handling errors	22	27
ATTENDANCE		
Total	7914	5124
Dates/Avg Per Date	8/989	6/854
Neutral site #/Avg	5/296	
Current win streak	1	-
Home win streak	2	-

Date	Opponent	Score	Score by set	Att.
Aug 25	CSU BAKERSFIELD	w 3-1	26-24,25-18,22-25,25-21	1257
Aug 26	ULM	w 3-0	25-14,25-9,25-13	563
Aug 26	UTAH STATE	w 3-0	25-23,25-15,25-19	832
Aug 31	at K-State	w 3-2	21-25,25-14,25-23,15-25,15-9	1528
Sep 01	vs #6 Wisconsin	L 0-3	18-25,21-25,22-25	322
Sep 02	vs Syracuse	w 3-0	25-22,25-13,25-16	341
Sep 05	ORAL ROBERTS	w 3-0	25-20,25-22,25-21	639
Sep 08	vs #19 USC	L 2-3	25-22,21-25,25-20,24-26,9-15	150
Sep 08	vs YALE	w 3-0	33-31,25-18,25-17	200
Sep 09	at UC Santa Barbara	w 3-2	16-25,25-20,25-19,21-25,15-11	300
Sep 15	vs Sam Houston State	w 3-0	25-16,25-20,25-15	468
Sep 16	at SMU	w 3-2	25-17,23-25,21-25,25-22,15-13	593
*Sep 20	TENNESSEE	w 3-0	25-17,25-19,25-21	833
*Sep 24	#3 FLORIDA	L 2-3	22-25,25-21,16-25,25-23,13-15	1343
*Sep 27	at Alabama	L 2-3	20-25,25-17,32-30,22-25,5-15	846
*Oct 01	at Auburn	L 0-3	23-25,22-25,24-26	861
*Oct 06	OLE MISS	w 3-2	25-18,13-25,25-23,23-25,15-12	1428
*Oct 08	at LSU	L 2-3	23-25,25-21,25-19,25-27,12-15	996
*Oct 13	SOUTH CAROLINA	w 3-0	25-19,25-15,25-14	1019

Record in 3-set matches: 8-2

Record in 4-set matches: 1-0

Record in 5-set matches: 4-4



SEC SEASON STATISTICS

RECORD:	OVERALL	HOME	AWAY	NEUTRAL
ALL GAMES	3-4	3-1	0-3	0-0
CONFERENCE	3-4	3-1	0-3	0-0
NON-CONFERENCE	0-0	0-0	0-0	0-0

#	Player	sp	Attack					Set		Serve			re	Dig		Blocking						points
			k	k/s	e	ta	pct	a	a/s	sa	se	sa/s		dig	dig/s	bs	ba	total	blk/s	be	bhe	
17	Kori Ortiz	24	1	0.04	0	1	1.000	2	0.08	0	3	0.00	1	33	1.38	0	0	0	0.00	0	1	1.0
6	Fernanda Guitron	3	4	1.33	0	11	.364	0	0.00	0	0	0.00	0	2	0.67	0	2	2	0.67	1	0	5.0
10	Kelly O'Brien	29	38	1.31	12	79	.329	0	0.00	0	0	0.00	1	5	0.17	3	32	35	1.21	5	0	57.0
3	Hailey Dirrigl	29	89	3.07	26	203	.310	0	0.00	2	2	0.07	0	10	0.34	0	16	16	0.55	1	0	99.0
8	Elizabeth Pamphile	29	52	1.79	26	120	.217	2	0.07	2	4	0.07	0	10	0.34	1	24	25	0.86	3	0	67.0
21	Pilar Victoria	29	141	4.86	59	393	.209	8	0.28	9	6	0.31	4	88	3.03	3	21	24	0.83	1	0	163.5
7	Reagan Robinson	25	53	2.12	19	164	.207	3	0.12	1	3	0.04	2	13	0.52	1	3	4	0.16	2	0	56.5
1	Rachel Rippee	29	12	0.41	5	34	.206	317	10.93	4	11	0.14	0	60	2.07	2	15	17	0.59	4	11	25.5
23	Krista Kolbinskie	29	0	0.00	0	1	.000	5	0.17	5	6	0.17	0	73	2.52	0	0	0	0.00	0	3	5.0
9	Klaire Trainor	4	0	0.00	0	0	.000	0	0.00	0	1	0.00	0	0	0.00	0	0	0	0.00	0	0	0.0
2	Paige Johnson	29	0	0.00	0	0	.000	2	0.07	3	3	0.10	1	29	1.00	0	0	0	0.00	0	0	3.0
12	Okiana Valle	29	0	0.00	0	1	.000	33	1.14	5	13	0.17	4	104	3.59	0	0	0	0.00	0	0	5.0
16	Logan Brown	2	2	1.00	3	14	-.071	0	0.00	0	0	0.00	0	1	0.50	0	1	1	0.50	0	0	2.5
	TEAM	-	-	-	-	-	-	-	-	-	-	-	7	-	-	-	-	-	-	-	-	-
	ARKANSAS	29	392	13.52	150	1021	.237	372	12.83	31	52	1.07	20	428	14.76	10	114	67.0	2.31	17	15	490.0
	Opponents	29	371	12.79	146	1005	.224	343	11.83	20	45	0.69	31	404	13.93	13	128	77.0	2.66	31	12	468.0

Team Statistics	AR	OPP
ATTACK		
Kills	392	371
Errors	150	146
Total Attacks	1021	1005
Attack Pct	.237	.224
Kills/Set	13.5	12.8
SET		
Assists	372	343
Attempts	1034	1003
Assist Pct	.360	.342
Assists/Set	12.8	11.8
SERVE		
Aces	31	20
Errors	52	45
Aces/Set	1.1	0.7
SERVE RECEPTIONS		
Errors	20	31
Errors/Set	0.7	1.1
Attempts	569	581
Reception Pct	.965	.947
DEFENSE		
Digs	428	404
Digs/Set	14.8	13.9
BLOCKING		
Block Solo	10	13
Block Assist	114	128
Total Blocks	67.0	77.0
Blocks/Set	2.3	2.7
Block Errors	17	31
Ball handling errors	15	12
ATTENDANCE		
Total	4623	2703
Dates/Avg Per Date	4/1156	3/901
Neutral site #/Avg	0/0	
Current win streak	1	-
Home win streak	2	-

Date	Opponent	Score	Score by set	Att.
*Sep 20	TENNESSEE	w 3-0	25-17,25-19,25-21	833
*Sep 24	#3 FLORIDA	L 2-3	22-25,25-21,16-25,25-23,13-15	1343
*Sep 27	at Alabama	L 2-3	20-25,25-17,32-30,22-25,5-15	846
*Oct 01	at Auburn	L 0-3	23-25,22-25,24-26	861
*Oct 06	OLE MISS	w 3-2	25-18,13-25,25-23,23-25,15-12	1428
*Oct 08	at LSU	L 2-3	23-25,25-21,25-19,25-27,12-15	996
*Oct 13	SOUTH CAROLINA	w 3-0	25-19,25-15,25-14	1019

Record in 3-set matches: 2-1
Record in 4-set matches: 0-0
Record in 5-set matches: 1-3



RADIO/TV HEADSHOT ROSTER



1 RACHEL RIPPEE
Soph. | S | 6-0
Springfield, Mo.



2 PAIGE JOHNSON
Fr. | L/DS | 5-6
Pleasant Hill, Mo.



3 HAILEY DIRRIGL
Fr. | OH | 6-2
Phoenix, Ariz.



5 KENZIE STINNETT
Fr. | S | 5-9
Carl Junction, Mo.



6 FERNANDA GUITRON
R-Soph. | OPP | 6-0
Guadalajara, Mexico



7 REAGAN ROBINSON
Soph. | OH | 5-11
Fayetteville, Ark.



8 ELIZABETH PAMPHILE
Fr. | MB | 6-1
Orlando, Fla.



9 KLAIRE TRAINOR
Fr. | OH | 5-8
Springdale, Ark.



10 KELLY O'BRIEN
Jr. | MB | 6-1
Long Beach, Calif.



11 KILEY TILLER
Fr. | MB | 6-3
Carthage, Mo.



12 OKIANA VALLE
Jr. | L/DS | 5-2
Barceloneta, Puerto Rico



15 MAIA STRIPP
Fr. | MB | 6-3
Roskilde, Denmark



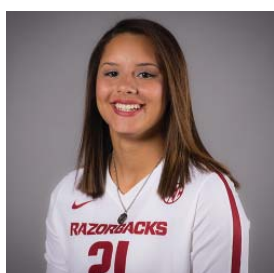
16 LOGAN BROWN
Fr. | OH | 6-0
Dallas, Texas



17 KORI ORTIZ
Sr. | L/DS | 5-5
Southlake, Texas



18 SAVANNAH WAGNER
Fr. | OH | 5-9
Mount Vernon, Texas



21 PILAR VICTORIA
R-Sr. | OH | 5-11
Caguas, Puerto Rico



23 KRISTA KOLBINSKIE
Sr. | L/DS | 5-9
San Antonio, Texas



JASON WATSON
Head Coach
Second Season



JON NEWMAN-GONCHAR
Associate Head Coach
Second Season



MEGAN WARGO-KEARNEY
Assistant Coach
First Season

