

11 NCAA TOURNAMENT APPEARANCES | 11 AVCA ALL-AMERICA SELECTIONS | 64 ALL-SEC SELECTIONS

**ARKANSAS**  
2017 VOLLEYBALL

#### RESULTS/SCHEDULE

OVERALL: 15-7 | SEC: 5-5  
H: 8-1 | A: 4-4 | N: 3-2

#### AUGUST

|    |                 |       |        |
|----|-----------------|-------|--------|
| 25 | CSU Bakersfield |       | W, 3-1 |
| 26 | ULM             | SECN+ | W, 3-0 |
| 26 | Utah State      | SECN+ | W, 3-0 |
| 31 | at Kansas State | ESPN3 | W, 3-2 |

#### SEPTEMBER

|    |                      |             |        |
|----|----------------------|-------------|--------|
| 1  | vs #6 Wisconsin      |             | L, 0-3 |
| 2  | vs Syracuse          |             | W, 3-0 |
| 5  | Oral Roberts         | SECN+       | W, 3-0 |
| 8  | vs #19 USC           | Big West TV | L, 2-3 |
| 8  | vs Yale              | Big West TV | W, 3-0 |
| 9  | at UCSB              | Big West TV | W, 3-2 |
| 15 | vs Sam Houston State |             | W, 3-0 |
| 16 | at SMU               | PonyUp TV   | W, 3-2 |
| 20 | Tennessee*           | ESPNU       | W, 3-0 |
| 24 | #3 Florida*          |             | L, 2-3 |
| 27 | at Alabama*          | SEC Network | L, 2-3 |

#### OCTOBER

|    |                    |             |           |
|----|--------------------|-------------|-----------|
| 1  | at Auburn*         | SECN+       | L, 0-3    |
| 6  | Ole Miss*          | SECN+       | W, 3-2    |
| 8  | at LSU*            | SECN+       | L, 2-3    |
| 13 | South Carolina*    | SECN+       | W, 3-0    |
| 20 | at Texas A&M*      | SECN+       | W, 3-0    |
| 22 | Mississippi State* | SEC Network | W, 3-0    |
| 25 | at Georgia*        | ESPNU       | L, 1-3    |
| 29 | at Ole Miss*       | SECN+       | 1:30 p.m. |

#### NOVEMBER

|    |                    |       |            |
|----|--------------------|-------|------------|
| 3  | LSU*               | SECN+ | 7 p.m.     |
| 5  | Texas A&M*         | SECN+ | 1 p.m.     |
| 10 | at Florida*        | SECN+ | 6 p.m.     |
| 12 | at South Carolina* | SECN+ | 12:30 p.m. |
| 19 | at Missouri*       | SECWC | 3 p.m.     |
| 22 | Kentucky*          | SECN+ | 7 p.m.     |
| 25 | Auburn*            | SECN+ | 1 p.m.     |

#### DECEMBER

|     |                      |  |     |
|-----|----------------------|--|-----|
| 1-2 | NCAA 1st/2nd Rounds  |  | TBA |
| 8-9 | NCAA Regional Rounds |  | TBA |
| 14  | NCAA Semifinals      |  | TBA |
| 16  | NCAA Championship    |  | TBA |

! - Arkansas Classic  
# - K-State Invitational  
% - UCSB Thunderdome Classic  
^ - SMU Doubletree Classic  
\* - SEC match

All home matches played at Barnhill Arena (8,500)  
All times CENTRAL and subject to change



#### COMING UP NEXT

##### OLE MISS REBELS

Record: 14-10, 5-6 SEC  
Rank: NR  
All-Time Series: Arkansas, 31-14  
Last Meeting: Arkansas, 3-2 (10/6/17)



##### LSU TIGERS

Record: 16-5, 7-3 SEC  
Rank: NR  
All-Time Series: Arkansas, 28-19  
Last Meeting: LSU, 3-2 (10/8/17)



##### TEXAS A&M AGGIES

Record: 7-10, 4-6 SEC  
Rank: NR  
All-Time Series: Texas A&M, 6-3  
Last Meeting: Arkansas, 3-0 (10/20/17)



#### #ARKVB NEWS/NOTES

##### ALL-TIME SERIES VS OLE MISS

With a five-set win in Fayetteville (Oct. 6), the Razorbacks own a 31-14 lead in their all-time series against Ole Miss. The victory snapped a three-match skid to the Rebels and was the third five setter in the past four between the two teams. Arkansas is 12-9 in road matches against Ole Miss.

##### LAST TIME OUT

Arkansas' offense generated a .336 hitting percentage but lost in four sets at Georgia (Oct. 25). It was the team's first loss of the season when out-hitting its opponent. Redshirt senior Pilar Victoria led all players with 27 kills.

##### 1,000-KILL CLUB

With her 16th of 27 kills at Georgia (Oct. 25), Pilar Victoria became the 16th Razorback in program history with 1,000 career kills. She reached the milestone in her 52nd match as a Razorback, averaging 5.11 kills per set since arriving in Fayetteville in 2015; she was a redshirt last season.

##### IT STARTS WITH A SERVE

Over its last two matches, Arkansas has served up 16 aces which is good for 2.29 service winners per set. Krista Kolbinkie has six of those 16 aces while Hailey Dirrigl has at least one ace in each of the last four matches including a career-high four at Georgia (Oct. 25).

##### WHITE-HOT OFFENSE

Arkansas' .430 hitting efficiency (45-8-86) in its straight-set win over Mississippi State (Oct. 23) tied the sixth-best hitting percentage for a single match in program history. It also marks the third highest by a team in SEC play this year.

##### RPI WATCH

Arkansas holds steady at No. 40 in the Oct. 23 release of

#### TALE OF THE TAPE

| ARKANSAS |             | OLE MISS |
|----------|-------------|----------|
| .261     | Hitting Pct | .204     |
| 13.99    | Kills/Set   | 13.45    |
| 13.38    | Assists/Set | 12.48    |
| 14.39    | Digs/Set    | 16.56    |
| 1.98     | Blocks/Set  | 2.01     |
| 1.30     | Aces/Set    | 1.05     |

| ARKANSAS |             | LSU   |
|----------|-------------|-------|
| .261     | Hitting Pct | .235  |
| 13.99    | Kills/Set   | 13.18 |
| 13.38    | Assists/Set | 12.37 |
| 14.39    | Digs/Set    | 14.41 |
| 1.98     | Blocks/Set  | 2.49  |
| 1.30     | Aces/Set    | 1.08  |

| ARKANSAS |             | TEXAS A&M |
|----------|-------------|-----------|
| .261     | Hitting Pct | .185      |
| 13.99    | Kills/Set   | 12.25     |
| 13.38    | Assists/Set | 11.45     |
| 14.39    | Digs/Set    | 14.22     |
| 1.98     | Blocks/Set  | 2.17      |
| 1.30     | Aces/Set    | 1.22      |

the NCAA RPI. The Razorbacks are one of eight teams from the SEC positioned inside the top 50. This week features a pair of top-75 matchups at Georgia and Ole Miss.

##### SETTER-HITTER CONNECTION

Redshirt senior Pilar Victoria leads the SEC and NCAA with 5.79 kills per set and 6.40 points per set. From her setter position, sophomore Rachel Rippee ranks second in the SEC and 13th in the NCAA with 11.57 assists per set. Arkansas is 31st in the nation with a .261 team hitting percentage.

##### ...IT'S HOW YOU FINISH

Trailing 20-14 in the third set at Texas A&M (Oct. 20), the Razorbacks ended the frame (and match) on a 12-4 surge. Arkansas won eight of the last 11 points in the first set and used a 9-0 run to end the second set against the Aggies.

##### INTO THE TOP 5

With her sixth dig at LSU (Oct. 8), junior libero Okiana Valle moved into fifth place on the program's all-time digs list. She has moved into fourth and enters Sunday's match with 1,185 career digs.

##### NOTHING LIKE BARNHILL

Spurred on by the fifth-largest crowd in program history, the Razorbacks posted a 3-2 win over Ole Miss (Oct. 6) at Barnhill Arena. The attendance of 1,428 marks the second top-10 home crowd of the year. Arkansas is 8-1 at home following its Oct. 23 win over Mississippi State.

##### TWO FOR 20

With their efforts at Alabama (Sept. 27), Pilar Victoria and Hailey Dirrigl became the first Razorback pair with 20 kills apiece since 2011. Victoria had 29 kills in the match while Dirrigl had a career-high 20 kills.



## ARKANSAS VOLLEYBALL QUICK FACTS

## UNIVERSITY INFORMATION

Location \_\_\_\_\_ Fayetteville, Ark.  
 Founded \_\_\_\_\_ March 27, 1871  
 Enrollment \_\_\_\_\_ 27,194  
 Nickname \_\_\_\_\_ Razorbacks  
 School Colors \_\_\_\_\_ Cardinal, White  
 Affiliation \_\_\_\_\_ NCAA Division I  
 Conference \_\_\_\_\_ Southeastern (SEC)  
 Chancellor \_\_\_\_\_ Dr. Joseph E Steinmetz  
 Vice Chancellor/Dir. of Athletics \_\_\_\_\_ Jeff Long  
 Faculty Athletic Representative \_\_\_\_\_ Gerald Jordan  
 University Website \_\_\_\_\_ www.uark.edu  
 Athletics Website \_\_\_\_\_ ArkansasRazorbacks.com

## TEAM INFORMATION

2016 Overall Record \_\_\_\_\_ 9-21  
 Conference Record \_\_\_\_\_ 7-11  
 SEC Finish \_\_\_\_\_ t7th  
 Home Record \_\_\_\_\_ 4-8  
 Away Record \_\_\_\_\_ 4-9  
 Neutral Record \_\_\_\_\_ 1-4  
 Letterwinners Returning/Lost \_\_\_\_\_ 8/7  
 Starters Returning/Lost \_\_\_\_\_ 3+L/5  
 Newcomers \_\_\_\_\_ 9

## COACHING STAFF

Head Coach \_\_\_\_\_ Jason Watson  
 Record at Arkansas \_\_\_\_\_ 24-28 (.462)  
 Career Record \_\_\_\_\_ 224-176 (.560)  
 Associate Head Coach \_\_\_\_\_ Jon Newman-Gonchar  
 Assistant Coach \_\_\_\_\_ Megan Wargo-Kearney  
 Volunteer Assistant \_\_\_\_\_ Andy Rynd  
 Director of Operations \_\_\_\_\_ Meredith Hays  
 Volleyball Office Phone \_\_\_\_\_ 479/575-4587

## TEAM HISTORY

All-Time Record \_\_\_\_\_ 462-313 (.597)/23 Seasons  
 All-Time SEC Record \_\_\_\_\_ 238-168 (.588)  
 NCAA Appearances/Last \_\_\_\_\_ 11/2013  
 SEC Championships/Last \_\_\_\_\_ 1 (Tournament)/1997  
 First Year of Volleyball \_\_\_\_\_ 1994

## ATHLETICS COMMUNICATIONS

Asst AD for Communications \_\_\_\_\_ Patrick Pierson  
 Associate Director \_\_\_\_\_ David Beall  
 Associate Director \_\_\_\_\_ Jeri Thorpe  
 Assistant Director \_\_\_\_\_ Joy Ekema-Agbaw  
 Assistant Director (VB) \_\_\_\_\_ Zach Lawson  
 Email \_\_\_\_\_ zlawson@uark.edu  
 Office # \_\_\_\_\_ 479-575-7089  
 Cell # \_\_\_\_\_ 479-595-2358  
 Assistant Director \_\_\_\_\_ John Thomas  
 Communications Assistant \_\_\_\_\_ Brent Hull  
 Communications Assistant \_\_\_\_\_ Brandon Langlois  
 Secretary \_\_\_\_\_ Mary Lynn Gibson

## Mailing Address:

Arkansas Athletics Communications  
 350 N. Razorback Road  
 Fayetteville, AR 72703



**2017 ARKANSAS RAZORBACKS** | Front Row (l to r): Savannah Wagner, Kenzie Stinnett, Reagan Robinson, Okiana Valle, Kori Ortiz, Krista Kolbinskie, Paige Johnson, Klaire Trainor; Back Row (l to r): Maia Stripp, Hailey Dirrigl, Elizabeth Pamphile, Logan Brown, Rachel Rippee, Pilar Victoria, Kelly O'Brien, Fernanda Güitron, Kiley Tiller.

## 2017 ARKANSAS VOLLEYBALL ROSTER

| #  | Name               | Position | Height | Class/Exp. | Hometown/Previous                           |
|----|--------------------|----------|--------|------------|---|
| 1  | Rachel Rippee      | 6-0      | S      | Soph./1L   | Springfield, Mo./Kickapoo HS                |
| 2  | Paige Johnson      | 5-6      | L/DS   | Fr./HS     | Pleasant Hill, Mo./Pleasant Hill            |
| 3  | Hailey Dirrigl     | 6-2      | OH     | Fr./HS     | Phoenix, Ariz./Desert Vista HS              |
| 5  | Kenzie Stinnett    | 5-9      | S      | Fr./HS     | Carl Junction, Mo./Carl Junction            |
| 6  | Fernanda Güitron   | 6-0      | OPP    | RSoph./1L  | Guadalajara, Mexico/Jose Vasconcelos        |
| 7  | Reagan Robinson    | 5-11     | OH     | Soph./1L   | Fayetteville, Ark./Shiloh Christian HS      |
| 8  | Elizabeth Pamphile | 6-1      | MB     | Fr./HS     | Orlando, Fla./Edgewater HS                  |
| 9  | Klaire Trainor     | 5-8      | OH     | Fr./HS     | Springdale, Ark./Har-Ber HS                 |
| 10 | Kelly O'Brien      | 6-1      | MB     | Jr./1L     | Long Beach, Calif./Wyoming                  |
| 11 | Kiley Tiller       | 6-3      | MB     | Fr./HS     | Carthage, Mo./Carthage                      |
| 12 | Okiana Valle       | 5-2      | L/DS   | Jr./2L     | Barceloneta, Puerto Rico/Christian Military |
| 15 | Maia Stripp        | 6-3      | MB     | Fr./HS     | Roskilde, Denmark/Holte IF                  |
| 16 | Logan Brown        | 6-0      | OH     | Fr./HS     | Dallas, Texas/Rowlett HS                    |
| 17 | Kori Ortiz         | 5-5      | L/DS   | Sr./3L     | Southlake, Texas/Carroll HS                 |
| 18 | Savannah Wagner    | 5-9      | OH     | Fr./HS     | Mt. Vernon, Texas/Mt. Vernon                |
| 21 | Pilar Victoria     | 5-11     | OH     | RSr./1L    | Caguas, Puerto Rico/Texas                   |
| 23 | Krista Kolbinskie  | 5-9      | L/DS   | Sr./1L     | San Antonio, Texas/Reagan HS                |

Head Coach: Jason Watson/BYU, '95 (Second Season/13th Overall)

Associate Head Coach: Jon Newman-Gonchar/Northern Arizona, '05 (Second Season)

Assistant Coach: Megan Wargo-Kearney/Gettysburg College, '02 (First Season)

Volunteer Assistant: Andy Rynd/Bowling Green, '15 (Second Season)

Director of Operations: Meredith Hays/Arkansas, '13 (First Season)

Student Managers: Kelley Goldberg, Jonathan Roark and Hazel Rogers

## How Do You Say...

Rachel Rippee \_\_\_\_\_ rippy  
 Hailey Dirrigl \_\_\_\_\_ dur-gull  
 Kenzie Stinnett \_\_\_\_\_ sten-it  
 Fernanda Güitron \_\_\_\_\_ gwee-troan  
 Elizabeth Pamphile \_\_\_\_\_ pam-feel  
 Okiana Valle \_\_\_\_\_ oak-EE-on-uh VY-yay  
 Krista Kolbinskie \_\_\_\_\_ coal-BEN-ski  
 Andy Rynd \_\_\_\_\_ rend



## MATCH-BY-MATCH STARTERS

CSU Bakersfield  
ULM  
Utah State  
at Kansas State  
vs #6 Wisconsin  
vs Syracuse  
Oral Roberts  
vs #19 USC  
vs Yale  
at UCSB  
vs Sam Houston State  
at SMU  
Tennessee  
#3 Florida  
at Alabama  
at Auburn  
Ole Miss  
at LSU  
South Carolina  
at Texas A&M  
Mississippi State  
at Georgia  
at Ole Miss  
LSU  
Texas A&M  
at Florida  
at South Carolina  
at Missouri  
Kentucky  
Auburn

Rippee, Pamphile, O'Brien, Ortiz, Victoria, Kolbinskie, Valle  
Rippee, Johnson, Pamphile, O'Brien, Victoria, Kolbinskie, Valle  
Rippee, Pamphile, O'Brien, Ortiz, Victoria, Kolbinskie, Valle  
Rippee, Pamphile, O'Brien, Ortiz, Victoria, Kolbinskie, Valle  
Rippee, Pamphile, O'Brien, Ortiz, Victoria, Kolbinskie, Valle  
Rippee, Pamphile, O'Brien, Ortiz, Victoria, Kolbinskie, Valle  
Rippee, Pamphile, O'Brien, Ortiz, Victoria, Kolbinskie, Valle  
Rippee, Pamphile, O'Brien, Ortiz, Victoria, Kolbinskie, Valle  
Rippee, Pamphile, O'Brien, Ortiz, Victoria, Kolbinskie, Valle  
Rippee, Pamphile, O'Brien, Ortiz, Victoria, Kolbinskie, Valle  
Rippee, Dirrigl, Pamphile, O'Brien, Ortiz, Victoria, Kolbinskie, Valle  
Rippee, Johnson, Pamphile, O'Brien, Victoria, Kolbinskie, Valle  
Rippee, Pamphile, O'Brien, Ortiz, Victoria, Kolbinskie, Valle  
Rippee, Pamphile, O'Brien, Ortiz, Victoria, Kolbinskie, Valle  
Rippee, Pamphile, O'Brien, Ortiz, Victoria, Kolbinskie, Valle  
Rippee, Pamphile, O'Brien, Ortiz, Victoria, Kolbinskie, Valle  
Rippee, Johnson, Pamphile, O'Brien, Victoria, Kolbinskie, Valle  
Rippee, Johnson, Pamphile, O'Brien, Victoria, Kolbinskie, Valle  
Rippee, Pamphile, O'Brien, Ortiz, Victoria, Kolbinskie, Valle  
Rippee, Pamphile, O'Brien, Ortiz, Victoria, Kolbinskie, Valle  
Rippee, Pamphile, O'Brien, Ortiz, Victoria, Kolbinskie, Valle  
Rippee, Pamphile, O'Brien, Ortiz, Victoria, Kolbinskie, Valle

## IT'S BEEN AWHILE

Freshman Hailey Dirrigl put down a career-high 20 kills at Alabama (Sept. 29), hitting .486 in the match. She became the first Arkansas freshman since 2009 (Jasmine Norton) with 20 kills in a match. Dirrigl is hitting .309 with 3.11 kills per set during SEC play.

## 30 AND COUNTING...

With 30 kills against No. 3 Florida (Sept. 24), Pilar Victoria posted her fourth 30-kill performance of the season. Of the 26 30-kill efforts in the NCAA this year, she has four and is one of three with multiple.

## MIDDLE DUO

In the Razorbacks' win over Tennessee (Sept. 20), middles Elizabeth Pamphile and Kelly O'Brien combined for 19 kills and a .517 hitting percentage. Pamphile and O'Brien each tied career highs with 12 and seven kills, respectively.

## NON-CONFERENCE SNAPSHOT

For the fourth time in program history, Arkansas went into SEC play with double-digit wins. The Razorbacks previously hit the mark in 1997, 1999 and 2015. The team faced four teams that played in last year's NCAA Tournament and its only losses came to No. 6 Wisconsin and No. 19 USC.

## MAKE IT THREE

For a third-straight week, team co-captain Pilar Victoria was named SEC Offensive Player of the Week (Sept. 18), the fifth weekly conference honor of her career. She tallied two Player of the Week selections in 2015.

## 1,000-DIG CLUB

With her second dig at UCSB (Sept. 9), junior libero Okiana Valle became the 10th Razorback with 1,000 career digs. She finished the match against the Gauchos with 15 digs.

## RIPPEE DISHES IT OUT

In directing the team to a .348 hitting percentage, setter Rachel Rippee dished out 50 assists in Arkansas' sweep of Yale (Sept. 8). With the performance, she became just the fourth Arkansas setter with 50 or more assists in a three-

set match and first since 2003.

## CAN YOU DIG IT?

Arkansas' 56 digs in a sweep of Oral Roberts (Sept. 5) are the most by the program in a three-set match since 2012. Libero Okiana Valle had a match-high 14 digs while Krista Kolbinskie registered a then-career best with 11 digs.

## RIPPEE CRACKS TOP 10

With her 23rd assist against Oral Roberts (Sept. 5), setter Rachel Rippee moved into the program's career top 10 for career assists. She dished a career-high 59 assists at SMU (Sept. 16) and is currently seventh on Arkansas' top-10 list with 1,804 career assists.

## BIG WIN IN THE LITTLE APPLE

Arkansas' five-set win over Kansas State (Aug. 31) was the program's first ever in Manhattan. The Razorbacks had lost the previous five meetings on the Wildcats' home floor and picked up the program's third win in the series.

## ALL-TOURNAMENT IN THE LITTLE APPLE

In recognition of their standout showing, Pilar Victoria and Elizabeth Pamphile were named to the K-State Invitational All-Tournament Team. Victoria averaged 6.73 kills per set while hitting .381 while Pamphile tallied 2.09 kills per set and a .340 hitting percentage in the tournament.

## RIPPEE GARNERS SEC ACCOLADES

Averaging 11.80 assists per set and directing the offense to a .274 hitting percentage during the Arkansas Classic, Rachel Rippee was named the SEC Setter of the Week. She is the second Razorback (Adrien Wohlschlaeger) to win the award since its inception in 2015.

## TOP-10 OUTBURST

Arkansas beat Utah State (Aug. 26) behind its .422 team hitting percentage, the 10th-highest single-match figure in program history. After committing seven attack errors in the opening set, the Razorbacks had just three combined errors in the next two sets.

## WHAT HAPPENS WHEN...

|                     |      |
|---------------------|------|
| OVERALL             | 15-7 |
| SEC                 | 5-5  |
| HOME                | 8-1  |
| AWAY                | 4-4  |
| NEUTRAL             | 3-2  |
| VS RANKED OPPONENTS | 0-3  |

## BY SETS

|                      |      |
|----------------------|------|
| THREE SETS           | 10-2 |
| FOUR SETS            | 1-1  |
| FIVE SETS            | 4-4  |
| WIN FIRST SET        | 13-1 |
| LOSE FIRST SET       | 2-6  |
| WIN SECOND SET       | 13-3 |
| LOSE SECOND SET      | 2-4  |
| WIN FIRST TWO SETS   | 11-0 |
| LOSE FIRST TWO SETS  | 0-3  |
| SPLIT FIRST TWO SETS | 4-4  |

## STATISTICAL

|                            |      |
|----------------------------|------|
| MORE KILLS THAN OPPONENT   | 15-3 |
| FEWER KILLS THAN OPPONENT  | 0-3  |
| KILLS ARE TIED             | 0-1  |
| MORE DIGS THAN OPPONENT    | 13-1 |
| FEWER DIGS THAN OPPONENT   | 2-5  |
| DIGS ARE TIED              | 0-0  |
| MORE BLOCKS THAN OPPONENT  | 6-4  |
| FEWER BLOCKS THAN OPPONENT | 9-3  |
| BLOCKS ARE TIED            | 0-0  |
| MORE ACES THAN OPPONENT    | 10-3 |
| FEWER ACES THAN OPPONENT   | 3-4  |
| ACES ARE TIED              | 2-0  |
| HIGHER HITTING PCT         | 15-1 |
| LOWER HITTING PCT          | 0-6  |
| HITTING PCT TIED           | 0-0  |

## HITTING PERCENTAGE

|                |     |
|----------------|-----|
| .400 OR BETTER | 2-0 |
| .300-.399      | 4-1 |
| .200-.299      | 8-3 |
| .100-.199      | 1-3 |
| .000-.099      | 0-0 |
| NEGATIVE       | 0-0 |

## OPPONENT HITTING PERCENTAGE

|                |     |
|----------------|-----|
| .400 OR BETTER | 0-1 |
| .300-.399      | 0-0 |
| .200-.299      | 6-5 |
| .100-.199      | 6-1 |
| .000-.099      | 3-0 |
| NEGATIVE       | 0-0 |

## BY DAY

|           |     |
|-----------|-----|
| TUESDAY   | 1-0 |
| WEDNESDAY | 1-2 |
| THURSDAY  | 1-0 |
| FRIDAY    | 6-2 |
| SATURDAY  | 5-0 |
| SUNDAY    | 1-3 |

## BY MONTH

|           |     |
|-----------|-----|
| AUGUST    | 4-0 |
| SEPTEMBER | 7-4 |
| OCTOBER   | 4-3 |
| NOVEMBER  | 0-0 |
| DECEMBER  | 0-0 |





## 2017 AWARDS &amp; HONORS

Hailey Dirrigl

UCSB Thunderdome Classic All-Tournament

Elizabeth Pamphile

K-State Invitational All-Tournament

SMU Doubletree Classic All-Tournament

Rachel Rippee

Arkansas Classic All-Tournament

SEC Setter of the Week (Aug. 28)

Okiana Valle

SMU Doubletree Classic All-Tournament (Best Libero)

Pilar Victoria

Preseason All-SEC

Arkansas Classic All-Tournament (MVP)

K-State Invitational All-Tournament

SEC Player of the Week (Sept. 5)

UCSB Thunderdome Classic All-Tournament (MVP)

SEC Offensive Player of the Week (Sept. 11)

SMU Doubletree Classic All-Tournament (MVP)

SEC Offensive Player of the Week (Sept. 18)

## WELCOME TO BARNHILL ARENA

## Top Single-Match Attendance

|     |                             |          |
|-----|-----------------------------|----------|
| 1.  | 3,015 vs #13 Florida        | 9-14-12  |
| 2.  | 2,349 vs South Carolina     | 11-19-14 |
| 3.  | 1,672 vs Missouri           | 10-02-13 |
| 4.  | 1,463 vs Tennessee State    | 8-29-14  |
| 5.  | 1,428 vs Ole Miss           | 10-6-17  |
| 6.  | 1,407 vs #15 Colorado State | 8-26-11  |
| 7.  | 1,362 vs #5 Florida*        | 11-22-98 |
| 8.  | 1,343 vs #3 Florida         | 9-24-17  |
| 9.  | 1,342 vs McNeese State      | 8-28-15  |
| 10. | 1,284 vs Kansas             | 8-29-15  |

\* - 1998 SEC Tournament

## Year-by-Year Attendance Totals

| Year | # of Matches | Total  | Avg.  |
|------|--------------|--------|-------|
| 1994 | 15           | 6,548  | 437   |
| 1995 | 13           | 6,194  | 477   |
| 1996 | 18           | 8,296  | 461   |
| 1997 | 15           | 8,101  | 540   |
| 1998 | 19           | 13,299 | 700   |
| 1999 | 14           | 6,315  | 451   |
| 2000 | 17           | 7,499  | 441   |
| 2001 | 11           | 5,794  | 527   |
| 2002 | 16           | 7,127  | 451   |
| 2003 | 11           | 5,683  | 517   |
| 2004 | 14           | 8,254  | 590   |
| 2005 | 14           | 9,365  | 669   |
| 2006 | 14           | 9,817  | 701   |
| 2007 | 16           | 10,919 | 682   |
| 2008 | 14           | 9,086  | 649   |
| 2009 | 14           | 10,316 | 737   |
| 2010 | 14           | 11,855 | 847   |
| 2011 | 14           | 12,903 | 922   |
| 2012 | 18           | 18,297 | 1,016 |
| 2013 | 15           | 13,047 | 870   |
| 2014 | 16           | 15,265 | 954   |
| 2015 | 15           | 14,697 | 980   |
| 2016 | 11           | 9,149  | 832   |
| 2017 | 9            | 8,862  | 985   |

## HEAD COACH JASON WATSON | 2ND YEAR AT ARKANSAS (13TH OVERALL)



Jason Watson was named the head coach of the University of Arkansas volleyball team on January 7, 2016, to become the third head coach in program history. In 11 prior seasons as a head coach at BYU (2005-07) and Arizona State (2008-15), Watson enters the 2017 season with a 209-169 (.553) record and has guided his teams to seven NCAA Tournament selections.

The Razorbacks matched their SEC output from the previous season with a 7-11 mark in league play during Watson's first year including six wins in their last nine matches of the year. Individually, senior Danielle Harbin emerged to finish third in the SEC with 4.22 kills per set on her way to AVCA All-South Region honors.

In eight years in Tempe, Ariz., Watson transformed ASU Volleyball from a perennial sub-.500 program into a postseason regular. In his last four seasons, the Sun Devils averaged more than 19 wins per season with four consecutive bids to the NCAA Tournament. Watson also coached a pair of All-America performers, one in each of the past two seasons, for ASU's first national honorees since 2000.

Arizona State began the 2015 campaign with a 15-0 record and reached as high as No. 5 in the AVCA Top 25 poll. The Sun Devils also opened conference play with their best start in the Pac-10/12 era with four wins including the program's first win over Stanford in 15 years.

In 2014, ASU opened the season with six straight wins on the way to a 20-14 record. The Sun Devils were ranked in each AVCA regular season poll. Making its third straight trip to the NCAA Tournament, ASU defeated Texas A&M 3-1 to advance to the second round of the Tournament for the first time since 2006.

Watson led ASU to a 19-13 overall record in 2013 including a 3-0 upset of then-NCAA defending champion Texas. The Sun Devils started the season without dropping a set in their first seven matches. Making its second consecutive NCAA Tournament appearance, ASU dropped a five-set match to BYU in the first round.

In 2012, the Sun Devil squad opened with an 11-2 record, the best start since 1992. The Sun Devils finished with 20 wins - the most in a single season at ASU since 1993. The nine conference wins equaled the most since 2000. ASU made the program's 16th appearance in the NCAA Tournament and Watson became just the fifth coach from ASU to guide the Sun Devils to a NCAA postseason berth.

Watson arrived as the head coach at ASU in 2008. In 2013, he was also named head coach of the sand volleyball team when the sport was added to the athletics program.

In June 2015, Watson was selected by USA Volleyball to serve as the head coach of the U.S. Collegiate National Team on a six-match tour of China.

In his three seasons at the helm of the BYU program, Watson compiled a 74-18 (.804) overall record while leading BYU to three-straight NCAA Tournament appearances. During his first season as head coach, Watson was named Mountain West Conference Coach of the Year after leading his team to a 25-4 record, the program's best mark since 1998. In addition to leading BYU to the MWC regular-season title, Watson also helped lead the Cougars back to the NCAA Tournament.

In 2007, he led the Cougars to a 24-8 overall record and an Elite 8 finish in the NCAA Regional Final. His team also finished the year ranked 12th nationally, and at one point through the season, the Cougars held a rank as high as ninth in the country. No stranger to the best competition, Watson's teams have been ranked as high as eighth on RPI, showing the character and strength of the teams he builds. Never backing down from challenges are also another hallmark trait of Watson-led teams.

Prior to his head-coaching debut, Watson had amassed 11 years as an assistant coach at four universities. After an All-American playing career at BYU, Watson coached for two years under his former coach, Carl McGown, before beginning his career in women's volleyball with extremely successful stints at Kansas State, Arkansas State, and Montana State.

Watson had an All-American playing career at BYU from 1990-1994, where he was a four-year starter and two-time captain. He graduated from BYU in 1995 with a degree in physical education and sports business management after leaving his native home of Homebush, Australia.

He and his wife, Larissa, have two sons and a daughter.

## WATSON YEAR-BY-YEAR

| Year       | School        | Overall | Conf.   | Postseason      |
|------------|---------------|---------|---------|-----------------|
| 2005       | BYU           | 25-4    | 14-2    | NCAA 1st Round  |
| 2006       | BYU           | 25-6    | 13-3    | NCAA 1st Round  |
| 2007       | BYU           | 24-8    | 12-4    | NCAA Reg. Final |
| 2008       | Arizona State | 13-18   | 4-14    | --              |
| 2009       | Arizona State | 13-17   | 3-15    | --              |
| 2010       | Arizona State | 13-18   | 7-11    | --              |
| 2011       | Arizona State | 9-22    | 5-17    | --              |
| 2012       | Arizona State | 20-14   | 9-11    | NCAA 1st Round  |
| 2013       | Arizona State | 19-14   | 8-12    | NCAA 1st Round  |
| 2014       | Arizona State | 20-14   | 9-11    | NCAA 2nd Round  |
| 2015       | Arizona State | 19-13   | 8-12    | NCAA 1st Round  |
| 2016       | Arkansas      | 9-21    | 7-11    | --              |
| 2017       | Arkansas      | 15-7    | 5-5     | --              |
| 13 seasons |               | 224-175 | 104-127 | 7 appearances   |



## MILESTONE WATCH

## Hailey Dirrigl (OPP | Fr.)

|                        |                    |           |
|------------------------|--------------------|-----------|
| Looking for: 250 kills | Current Total: 224 | Needs: 26 |
|------------------------|--------------------|-----------|

## Kori Ortiz (L/DS | Jr.)

|                                   |                    |           |
|-----------------------------------|--------------------|-----------|
| Looking for: 783 digs (ARKVB #18) | Current Total: 711 | Needs: 72 |
|-----------------------------------|--------------------|-----------|

## Rachel Rippee (S | Soph.)

|                                       |                      |          |
|---------------------------------------|----------------------|----------|
| Looking for: 1,968 assists (ARKVB #6) | Current Total: 1,964 | Needs: 4 |
|---------------------------------------|----------------------|----------|

## Okiana Valle (Jr. | L/DS)

|                                    |                      |           |
|------------------------------------|----------------------|-----------|
| Looking for: 1,277 digs (ARKVB #3) | Current Total: 1,185 | Needs: 92 |
|------------------------------------|----------------------|-----------|

## Pilar Victoria (R-Sr. | OH)

|                                     |                      |           |
|-------------------------------------|----------------------|-----------|
| Looking for 1,109 kills (ARKVB #15) | Current Total: 1,011 | Needs: 98 |
|-------------------------------------|----------------------|-----------|

## 2017 DOUBLE-DOUBLES

|    |                |                     |                    |          |
|----|----------------|---------------------|--------------------|----------|
| 1  | Rachel Rippee  | 39 assists, 12 digs | vs CSU Bakersfield | 8-25-17  |
| 2  | Pilar Victoria | 23 kills, 14 digs   | vs CSU Bakersfield | 8-25-17  |
| 3  | Pilar Victoria | 34 kills, 14 digs   | at Kansas State    | 8-31-17  |
| 4  | Rachel Rippee  | 46 assists, 10 digs | vs Oral Roberts    | 9-5-17   |
| 5  | Pilar Victoria | 19 kills, 12 digs   | vs Oral Roberts    | 9-5-17   |
| 6  | Rachel Rippee  | 49 assists, 10 digs | vs #19 USC         | 9-8-17   |
| 7  | Pilar Victoria | 29 kills, 15 digs   | vs #19 USC         | 9-8-17   |
| 8  | Pilar Victoria | 16 kills, 12 digs   | vs Yale            | 9-8-17   |
| 9  | Rachel Rippee  | 52 assists, 15 digs | at UCSB            | 9-9-17   |
| 10 | Pilar Victoria | 32 kills, 12 digs   | at UCSB            | 9-9-17   |
| 11 | Rachel Rippee  | 59 assists, 14 digs | at SMU             | 9-16-17  |
| 12 | Pilar Victoria | 31 kills, 10 digs   | at SMU             | 9-16-17  |
| 13 | Rachel Rippee  | 54 assists, 11 digs | vs #3 Florida      | 9-24-17  |
| 14 | Rachel Rippee  | 59 assists, 10 digs | at Alabama         | 9-27-17  |
| 15 | Pilar Victoria | 29 kills, 15 digs   | at Alabama         | 9-27-17  |
| 16 | Rachel Rippee  | 53 assists, 12 digs | vs Ole Miss        | 10-6-17  |
| 17 | Pilar Victoria | 24 kills, 14 digs   | vs Ole Miss        | 10-6-17  |
| 18 | Pilar Victoria | 21 kills, 14 digs   | at LSU             | 10-8-17  |
| 19 | Pilar Victoria | 13 kills, 16 digs   | vs South Carolina  | 10-13-17 |

Season Count: Victoria (11), Rippee (8) | Career Count: Victoria (26), Rippee (15)

## WELCOME BACK, PILAR

Redshirt senior Pilar Victoria made the most of her return, averaging 6.80 kills per set while hitting .406 during the Arkansas Classic. She had at least 19 kills in each match, including a 26-kill showing against Utah State (Aug. 26).

## AYE AYE, CAPTAIN

By way of a team vote, seniors Kori Ortiz and Pilar Victoria will serve as the Razorbacks' team captains. Ortiz enters the season with 600 career digs while Victoria returns to the floor after a redshirt season in 2016.

## FRESH(MAN) FACES

Arkansas heads into the 2017 season with nine freshmen on the roster, the most in program history. Previously, the high was six freshmen on five other occasions, most recently in 2014. The latest incoming class earned Highest Honorable Mention accolades from PrepVolleyball.com.

## ACROSS THE NET

As part of their 2017 slate, the Razorbacks are scheduled to play 10 matches against eight teams that advanced to last year's NCAA Tournament. Arkansas will also face eight teams that appear in the AVCA preseason poll.

## WHAT SAY YOU, COACHES?

For a second-consecutive year, redshirt senior Pilar Victoria was named to the All-SEC Preseason Team. She tallied 525 kills in 2015 but missed last season with an injury. In the SEC preseason coaches poll, Arkansas was picked to finish eighth in the league.

## ACADEMIC SUCCESS

For the second time in program history, Arkansas earned

an AVCA Team Academic Award for the 2016-17 academic year. To be recognized, teams had to maintain a collective 3.30 or higher cumulative GPA. The team was previously honored for the 2014-15 academic year.

## ANOTHER SUMMER ABROAD

Associate head coach Jon Newman-Gonchar served as a consultant coach for the U.S. Women's National Team this summer. During that time, Team USA won gold at the Pan Am Cup in June and advanced to the final round of the FIVB Grand Prix in China.

## SIDELINE ADDITION

Megan Wargo-Kearney joined the Razorbacks as assistant coach in March after eight seasons at Truman State. During that time, she helped guide the Bulldogs to six Division II NCAA Tournament appearances and two Great Lakes Valley Tournament titles.

## SHE LOOKS FAMILIAR

A two-time AVCA All-America Honorable Mention pick as a Razorback (2013-14), Meredith Hays is back in Cardinal and White as the program's director of operations. She registered 962 kills in two seasons in Fayetteville.

## SEC STANDINGS

| School            | SEC        | Overall     | Streak    |
|-------------------|------------|-------------|-----------|
| #6 Kentucky       | 8-0        | 17-2        | W12       |
| #4 Florida        | 8-1        | 16-1        | W2        |
| LSU               | 7-2        | 16-4        | W5        |
| Missouri          | 6-3        | 13-9        | W1        |
| <b>ARKANSAS</b>   | <b>5-5</b> | <b>15-7</b> | <b>L1</b> |
| Georgia           | 5-5        | 15-8        | W3        |
| Ole Miss          | 5-6        | 14-10       | L1        |
| Auburn            | 4-6        | 11-8        | L5        |
| South Carolina    | 3-5        | 10-10       | L1        |
| Alabama           | 3-6        | 15-8        | W1        |
| Tennessee         | 3-6        | 10-8        | L1        |
| Texas A&M         | 3-6        | 6-10        | L2        |
| Mississippi State | 0-9        | 9-15        | L9        |

## AVCA TOP 25 (Week 9 - Oct. 23)

| Rank | Team                 | '17 Record | LW |
|------|----------------------|------------|----|
| 1    | Penn State (52)      | 19-1       | 1  |
| 2    | Stanford (11)        | 17-2       | 2  |
| 3    | Texas (1)            | 16-2       | 3  |
| 4    | Florida^             | 16-1       | 4  |
| 5    | Minnesota            | 19-2       | 5  |
| 6    | Kentucky^            | 17-2       | 6  |
| 7    | Nebraska             | 16-4       | 7  |
| 8    | BYU                  | 21-1       | 8  |
| 9    | Wisconsin^           | 14-5       | 9  |
| 10   | Michigan State       | 15-4       | 10 |
| 11   | Kansas               | 18-3       | 11 |
| 12   | Utah                 | 17-4       | 12 |
| 13   | UCLA                 | 13-6       | 13 |
| 14   | Washington           | 16-5       | 14 |
| 15   | Oregon               | 13-5       | 15 |
| 16   | Creighton            | 16-5       | 16 |
| 17   | Purdue               | 16-5       | 17 |
| 18   | San Diego            | 16-4       | 18 |
| 19   | Southern California^ | 15-6       | 19 |
| 20   | Colorado State       | 20-2       | 20 |
| 21   | Wichita State        | 18-3       | 21 |
| 22   | Iowa State           | 14-4       | 22 |
| 23   | Cal Poly             | 19-2       | 23 |
| 24   | Baylor               | 16-5       | 24 |
| 25   | Northern Iowa        | 20-5       | 25 |

Receiving Votes | Western Kentucky, Missouri State, Colorado, Illinois, VCU, Michigan, Oregon State, Pittsburgh.

^ - 2017 opponent



## SEASON &amp; CAREER HIGHS

## #1 RACHEL RIPPEE | SO | S

## SEASON HIGHS

Hitting % \_\_\_\_\_ --  
 Kills \_\_\_\_\_ 5 vs #3 Florida | 9-24-17  
 Attempts \_\_\_\_\_ 10 at Kansas State | 8-31-17  
 Assists \_\_\_\_\_ \*59 at Alabama | 9-27-17  
 Digs \_\_\_\_\_ 15 at UCSB | 9-9-17  
 Blocks \_\_\_\_\_ 6.0 (1-5) vs Ole Miss | 10-6-17  
 Aces \_\_\_\_\_ 3 vs CSU Bakersfield | 8-25-17

## CAREER HIGHS

Hitting % \_\_\_\_\_ --  
 Kills \_\_\_\_\_ 5 vs #3 Florida | 9-24-17  
 Attempts \_\_\_\_\_ 10 at Kansas State | 8-31-17  
 Assists \_\_\_\_\_ \*59 at Alabama | 9-27-17  
 Digs \_\_\_\_\_ 15 at UCSB | 9-9-17  
 Blocks \_\_\_\_\_ \*6.0 (1-5) vs Ole Miss | 10-6-17  
 Aces \_\_\_\_\_ 6 vs Georgia | 10-30-16

## #2 PAIGE JOHNSON | FR | L/DS

## SEASON HIGHS

Hitting % \_\_\_\_\_ --  
 Kills \_\_\_\_\_ --  
 Attempts \_\_\_\_\_ --  
 Assists \_\_\_\_\_ 2 vs Ole Miss | 10-6-17  
 Digs \_\_\_\_\_ \*11 vs Ole Miss | 10-6-17  
 Blocks \_\_\_\_\_ --  
 Aces \_\_\_\_\_ 3 vs Oral Roberts | 9-5-17

## CAREER HIGHS

Hitting % \_\_\_\_\_ --  
 Kills \_\_\_\_\_ --  
 Attempts \_\_\_\_\_ --  
 Assists \_\_\_\_\_ 2 vs Ole Miss | 10-6-17  
 Digs \_\_\_\_\_ \*11 vs Ole Miss | 10-6-17  
 Blocks \_\_\_\_\_ --  
 Aces \_\_\_\_\_ 3 vs Oral Roberts | 9-5-17

## #3 HAILEY DIRRIGL | FR | OH

## SEASON HIGHS

Hitting % \_\_\_\_\_ .500 (13-3-20) vs Yale | 9-8-17  
 Kills \_\_\_\_\_ 20 at Alabama | 9-27-17  
 Attempts \_\_\_\_\_ 37 at UCSB | 9-9-17  
 Assists \_\_\_\_\_ --  
 Digs \_\_\_\_\_ \*4 at Georgia | 10-25-17  
 Blocks \_\_\_\_\_ 6.0 (0-6) vs CSU Bakersfield | 8-25-17  
 Aces \_\_\_\_\_ 4 at Georgia | 10-25-17

## CAREER HIGHS

Hitting % \_\_\_\_\_ .500 (13-3-20) vs Yale | 9-8-17  
 Kills \_\_\_\_\_ 20 at Alabama | 9-27-17  
 Attempts \_\_\_\_\_ 37 at UCSB | 9-9-17  
 Assists \_\_\_\_\_ --  
 Digs \_\_\_\_\_ \*4 at Georgia | 10-25-17  
 Blocks \_\_\_\_\_ 6.0 (0-6) vs CSU Bakersfield | 8-25-17  
 Aces \_\_\_\_\_ 4 at Georgia | 10-25-17

## #5 KENZIE STINNETT | FR | S

## SEASON HIGHS

Hitting % \_\_\_\_\_  
 Kills \_\_\_\_\_  
 Attempts \_\_\_\_\_  
 Assists \_\_\_\_\_  
 Digs \_\_\_\_\_  
 Blocks \_\_\_\_\_  
 Aces \_\_\_\_\_

## CAREER HIGHS

Hitting % \_\_\_\_\_  
 Kills \_\_\_\_\_  
 Attempts \_\_\_\_\_  
 Assists \_\_\_\_\_  
 Digs \_\_\_\_\_  
 Blocks \_\_\_\_\_  
 Aces \_\_\_\_\_

## #6 FERNANDA GUITRON | R-SO | OPP

## SEASON HIGHS

Hitting % \_\_\_\_\_ .500 (6-0-12) at Georgia | 10-25-17  
 Kills \_\_\_\_\_ 7 vs Mississippi State | 10-22-17  
 Attempts \_\_\_\_\_ 13 vs Mississippi State | 10-22-17  
 Assists \_\_\_\_\_ 1 at Georgia | 10-25-17  
 Digs \_\_\_\_\_ 3 vs Mississippi State | 10-22-17  
 Blocks \_\_\_\_\_ 3.0 (0-3) vs Mississippi State | 10-22-17  
 Aces \_\_\_\_\_ --

## CAREER HIGHS

Hitting % \_\_\_\_\_ .500 (6-0-12) at Georgia | 10-25-17  
 Kills \_\_\_\_\_ 7 vs Mississippi State | 10-22-17  
 Attempts \_\_\_\_\_ 24 vs. Maryland | 9-2-16  
 Assists \_\_\_\_\_ 1 at Georgia | 10-25-17  
 Digs \_\_\_\_\_ \*3 vs Mississippi State | 10-22-17  
 Blocks \_\_\_\_\_ 3.0 (0-3) vs Mississippi State | 10-22-17  
 Aces \_\_\_\_\_ --

## #7 REAGAN ROBINSON | SO | OH

## SEASON HIGHS

Hitting % \_\_\_\_\_ .458 (12-1-24) vs Utah State | 8-26-17  
 Kills \_\_\_\_\_ 13 at Alabama | 9-27-17  
 Attempts \_\_\_\_\_ 41 at SMU | 9-16-17  
 Assists \_\_\_\_\_ 2 vs #3 Florida | 9-24-17  
 Digs \_\_\_\_\_ 7 at Alabama | 9-27-17  
 Blocks \_\_\_\_\_ \*2.0 (1-1) at LSU | 10-8-17  
 Aces \_\_\_\_\_ 2 at Kansas State | 8-31-17

## CAREER HIGHS

Hitting % \_\_\_\_\_ .458 (12-1-24) vs Utah State | 8-26-17  
 Kills \_\_\_\_\_ 13 at Alabama | 9-27-17  
 Attempts \_\_\_\_\_ 41 at SMU | 9-16-17  
 Assists \_\_\_\_\_ 2 vs #3 Florida | 9-24-17  
 Digs \_\_\_\_\_ 12 at #23 Kentucky | 10-14-16  
 Blocks \_\_\_\_\_ \*2.0 (1-1) at LSU | 10-8-17  
 Aces \_\_\_\_\_ \*2 at Kansas State | 8-31-17

## #8 ELIZABETH PAMPHILE | FR | MB

## SEASON HIGHS

Hitting % \_\_\_\_\_ .778 (7-0-9) vs ULM | 8-26-17  
 Kills \_\_\_\_\_ \*12 vs Tennessee | 9-20-17  
 Attempts \_\_\_\_\_ 24 vs CSU Bakersfield | 8-25-17  
 Assists \_\_\_\_\_ \*1 at Alabama | 9-27-17  
 Digs \_\_\_\_\_ \*4 vs #6 Wisconsin | 9-2-17  
 Blocks \_\_\_\_\_ 7.0 (0-7) vs #19 USC | 9-8-17  
 Aces \_\_\_\_\_ \*1 at Auburn | 10-1-17

## CAREER HIGHS

Hitting % \_\_\_\_\_ .778 (7-0-9) vs ULM | 8-26-17  
 Kills \_\_\_\_\_ \*12 vs Tennessee | 9-20-17  
 Attempts \_\_\_\_\_ 24 vs CSU Bakersfield | 8-25-17  
 Assists \_\_\_\_\_ \*1 at Alabama | 9-27-17  
 Digs \_\_\_\_\_ \*4 vs #6 Wisconsin | 9-2-17  
 Blocks \_\_\_\_\_ 7.0 (0-7) vs #19 USC | 9-8-17  
 Aces \_\_\_\_\_ \*1 at Auburn | 10-1-17

## #9 KLAIRE TRAINOR | FR | OH

## SEASON HIGHS

Hitting % \_\_\_\_\_ --  
 Kills \_\_\_\_\_ 4 vs ULM | 8-26-17  
 Attempts \_\_\_\_\_ 15 vs ULM | 8-26-17  
 Assists \_\_\_\_\_ --  
 Digs \_\_\_\_\_ 3 vs ULM | 8-26-17  
 Blocks \_\_\_\_\_ 1.0 (0-1) vs ULM | 8-26-17  
 Aces \_\_\_\_\_ \*1 vs Sam Houston State | 9-15-17

## CAREER HIGHS

Hitting % \_\_\_\_\_ --  
 Kills \_\_\_\_\_ 4 vs ULM | 8-26-17  
 Attempts \_\_\_\_\_ 15 vs ULM | 8-26-17  
 Assists \_\_\_\_\_ --  
 Digs \_\_\_\_\_ 3 vs ULM | 8-26-17  
 Blocks \_\_\_\_\_ 1.0 (0-1) vs ULM | 8-26-17  
 Aces \_\_\_\_\_ \*1 vs Sam Houston State | 9-15-17

## #10 KELLY O'BRIEN | JR | OH

## SEASON HIGHS

Hitting % \_\_\_\_\_ .600 (6-0-10) vs Syracuse | 9-2-17  
 Kills \_\_\_\_\_ \*7 at LSU | 10-8-17  
 Attempts \_\_\_\_\_ 14 vs Ole Miss | 10-6-17  
 Assists \_\_\_\_\_ \*1 at UCSB | 9-9-17  
 Digs \_\_\_\_\_ 5 vs Mississippi State | 10-22-17  
 Blocks \_\_\_\_\_ 9.0 (0-9) at SMU | 9-16-17  
 Aces \_\_\_\_\_ --

## CAREER HIGHS (at Arkansas)

Hitting % \_\_\_\_\_ .600 (6-0-10) vs Syracuse | 9-2-17  
 Kills \_\_\_\_\_ \*7 at LSU | 10-8-17  
 Attempts \_\_\_\_\_ 14 vs Ole Miss | 10-6-17  
 Assists \_\_\_\_\_ \*1 at UCSB | 9-9-17  
 Digs \_\_\_\_\_ 5 vs Mississippi State | 10-22-17  
 Blocks \_\_\_\_\_ 9.0 (0-9) at SMU | 9-16-17  
 Aces \_\_\_\_\_ --

## #11 KILEY TILLER | FR | MB

## SEASON HIGHS

Hitting % \_\_\_\_\_  
 Kills \_\_\_\_\_  
 Attempts \_\_\_\_\_  
 Assists \_\_\_\_\_  
 Digs \_\_\_\_\_  
 Blocks \_\_\_\_\_  
 Aces \_\_\_\_\_

## CAREER HIGHS

Hitting % \_\_\_\_\_  
 Kills \_\_\_\_\_  
 Attempts \_\_\_\_\_  
 Assists \_\_\_\_\_  
 Digs \_\_\_\_\_  
 Blocks \_\_\_\_\_  
 Aces \_\_\_\_\_

## #12 OKIANA VALLE | JR | L/DS

## SEASON HIGHS

Hitting % \_\_\_\_\_ --  
 Kills \_\_\_\_\_ \*1 at Georgia | 10-25-17  
 Attempts \_\_\_\_\_ 2 vs CSU Bakersfield | 8-25-17  
 Assists \_\_\_\_\_ 7 vs Ole Miss | 10-6-17  
 Digs \_\_\_\_\_ 26 at Alabama | 9-27-17  
 Blocks \_\_\_\_\_ --  
 Aces \_\_\_\_\_ 4 vs ULM | 8-26-17

## CAREER HIGHS

Hitting % \_\_\_\_\_ --  
 Kills \_\_\_\_\_ \*1 at Georgia | 10-25-17  
 Attempts \_\_\_\_\_ \*3 vs. South Carolina | 11-25-15  
 Assists \_\_\_\_\_ 9 at #4 Kansas | 9-3-16  
 Digs \_\_\_\_\_ 32 vs. South Carolina | 11-25-15  
 Blocks \_\_\_\_\_ --  
 Aces \_\_\_\_\_ \*4 vs ULM | 8-26-17

## #15 MAIA STRIPP | FR | MB

## SEASON HIGHS

Hitting % \_\_\_\_\_  
 Kills \_\_\_\_\_  
 Attempts \_\_\_\_\_  
 Assists \_\_\_\_\_  
 Digs \_\_\_\_\_  
 Blocks \_\_\_\_\_  
 Aces \_\_\_\_\_

## CAREER HIGHS

Hitting % \_\_\_\_\_  
 Kills \_\_\_\_\_  
 Attempts \_\_\_\_\_  
 Assists \_\_\_\_\_  
 Digs \_\_\_\_\_  
 Blocks \_\_\_\_\_  
 Aces \_\_\_\_\_





## SEASON &amp; CAREER HIGHS

#16 LOGAN BROWN | FR | OH

## SEASON HIGHS

Hitting % .269 (9-2-26) vs Sam Houston State | 9-15-17  
 Kills 9 vs Sam Houston State | 9-15-17  
 Attempts 30 at UCSB | 9-9-17  
 Assists 1 at UCSB | 9-9-17  
 Digs 7 at UCSB | 9-9-17  
 Blocks 3.0 (0-3) vs #19 USC | 9-8-17  
 Aces \*1 at UCSB | 9-9-17

## CAREER HIGHS

Hitting % .269 (9-2-26) vs Sam Houston State | 9-15-17  
 Kills 9 vs Sam Houston State | 9-15-17  
 Attempts 30 at UCSB | 9-9-17  
 Assists 1 at UCSB | 9-9-17  
 Digs 7 at UCSB | 9-9-17  
 Blocks 3.0 (0-3) vs #19 USC | 9-8-17  
 Aces \*1 at UCSB | 9-9-17

#18 SAVANNAH WAGNER | FR | OH

## SEASON HIGHS

Hitting % \_\_\_\_\_  
 Kills \_\_\_\_\_  
 Attempts \_\_\_\_\_  
 Assists \_\_\_\_\_  
 Digs \_\_\_\_\_  
 Blocks \_\_\_\_\_  
 Aces \_\_\_\_\_

## CAREER HIGHS

Hitting % \_\_\_\_\_  
 Kills \_\_\_\_\_  
 Attempts \_\_\_\_\_  
 Assists \_\_\_\_\_  
 Digs \_\_\_\_\_  
 Blocks \_\_\_\_\_  
 Aces \_\_\_\_\_

#23 KRISTA KOLBINSKIE | SR | L/DS

## SEASON HIGHS

Hitting % \_\_\_\_--  
 Kills \_\_\_\_--  
 Attempts \*1 vs Tennessee | 9-20-17  
 Assists 3 at UCSB | 9-9-17  
 Digs \*16 at LSU | 10-8-17  
 Blocks \_\_\_\_--  
 Aces \*3 at Georgia | 10-25-17

## CAREER HIGHS

Hitting % \_\_\_\_--  
 Kills \_\_\_\_--  
 Attempts 3 at #24 Kansas | 9-20-14  
 Assists 3 at UCSB | 9-9-17  
 Digs \*16 at LSU | 10-8-17  
 Blocks \_\_\_\_--  
 Aces \*3 at Georgia | 10-25-17

#17 KORI ORTIZ | SR | L/DS

## SEASON HIGHS

Hitting % \_\_\_\_--  
 Kills 1 at LSU | 10-8-17  
 Attempts 1 at LSU | 10-8-17  
 Assists \*1 vs Mississippi State | 10-22-17  
 Digs 11 at SMU | 9-16-17  
 Blocks \_\_\_\_--  
 Aces \*1 at UCSB | 9-9-17

## CAREER HIGHS

Hitting % \_\_\_\_--  
 Kills \*1 at LSU | 10-8-17  
 Attempts \*2 vs. South Dakota | 9-12-14  
 Assists 6 vs. Army | 8-29-15  
 Digs 18 vs. Kansas State | 9-19-15  
 Blocks \_\_\_\_--  
 Aces \*1 at UCSB | 9-9-17

#21 PILAR VICTORIA | R-SR | OH

## SEASON HIGHS

Hitting % .692 (19-1-26) vs ULM | 8-26-17  
 Kills 34 at Kansas State | 8-31-17  
 Attempts 82 at Alabama | 9-27-17  
 Assists 4 vs #19 USC | 9-8-17  
 Digs 16 vs South Carolina | 10-13-17  
 Blocks 6.0 (0-6) at LSU | 10-8-17  
 Aces \*3 at LSU | 10-8-17

## CAREER HIGHS (at Arkansas)

Hitting % .692 (19-1-26) vs ULM | 8-26-17  
 Kills 35 vs. Ole Miss | 10-18-15  
 Attempts 82 at Alabama | 9-27-17  
 Assists 4 vs #19 USC | 9-8-17  
 Digs 19 at LSU | 9-23-15  
 Blocks \*6.0 (0-6) at LSU | 10-8-17  
 Aces \*3 at LSU | 10-8-17

\*Tied, most recent listed



## OVERALL SEASON STATISTICS

| RECORD:        | OVERALL | HOME | AWAY | NEUTRAL |
|----------------|---------|------|------|---------|
| ALL GAMES      | 15-7    | 8-1  | 4-4  | 3-2     |
| CONFERENCE     | 5-5     | 4-1  | 1-4  | 0-0     |
| NON-CONFERENCE | 10-2    | 4-0  | 3-0  | 3-2     |

| #  | Player             | sp | Attack |       |     |      |       | Set  |       | Serve |     |      | re  | Dig  |       | Blocking |     |       |       |    |     |        | points |
|----|--------------------|----|--------|-------|-----|------|-------|------|-------|-------|-----|------|-----|------|-------|----------|-----|-------|-------|----|-----|--------|--------|
|    |                    |    | k      | k/s   | e   | ta   | pct   | a    | a/s   | sa    | se  | sa/s |     | dig  | dig/s | bs       | ba  | total | blk/s | be | bhe |        |        |
| 17 | Kori Ortiz         | 71 | 1      | 0.01  | 0   | 1    | 1.000 | 7    | 0.10  | 3     | 5   | 0.04 | 18  | 111  | 1.56  | 0        | 0   | 0     | 0.00  | 0  | 1   | 4.0    |        |
| 10 | Kelly O'Brien      | 84 | 94     | 1.12  | 32  | 204  | .304  | 2    | 0.02  | 0     | 0   | 0.00 | 1   | 18   | 0.21  | 4        | 82  | 86    | 1.02  | 10 | 0   | 139.0  |        |
| 21 | Pilar Victoria     | 84 | 486    | 5.79  | 150 | 1123 | .299  | 25   | 0.30  | 22    | 25  | 0.26 | 11  | 230  | 2.74  | 7        | 45  | 52    | 0.62  | 2  | 2   | 537.5  |        |
| 8  | Elizabeth Pamphile | 84 | 162    | 1.93  | 59  | 347  | .297  | 3    | 0.04  | 3     | 24  | 0.04 | 0   | 35   | 0.42  | 2        | 64  | 66    | 0.79  | 5  | 1   | 199.0  |        |
| 6  | Fernanda Guitron   | 14 | 20     | 1.43  | 6   | 49   | .286  | 1    | 0.07  | 0     | 0   | 0.00 | 0   | 7    | 0.50  | 0        | 6   | 6     | 0.43  | 1  | 0   | 23.0   |        |
| 3  | Hailey Dirrigl     | 84 | 224    | 2.67  | 82  | 562  | .253  | 0    | 0.00  | 9     | 4   | 0.11 | 3   | 31   | 0.37  | 2        | 37  | 39    | 0.46  | 3  | 0   | 253.5  |        |
| 7  | Reagan Robinson    | 58 | 132    | 2.28  | 57  | 407  | .184  | 4    | 0.07  | 4     | 17  | 0.07 | 6   | 33   | 0.57  | 1        | 10  | 11    | 0.19  | 3  | 0   | 142.0  |        |
| 12 | Okiana Valle       | 84 | 2      | 0.02  | 1   | 7    | .143  | 87   | 1.04  | 18    | 40  | 0.21 | 13  | 293  | 3.49  | 0        | 0   | 0     | 0.00  | 0  | 0   | 20.0   |        |
| 1  | Rachel Rippee      | 84 | 26     | 0.31  | 15  | 78   | .141  | 972  | 11.57 | 17    | 31  | 0.20 | 0   | 172  | 2.05  | 2        | 45  | 47    | 0.56  | 6  | 17  | 67.5   |        |
| 16 | Logan Brown        | 20 | 24     | 1.20  | 12  | 101  | .119  | 1    | 0.05  | 2     | 8   | 0.10 | 3   | 11   | 0.55  | 0        | 6   | 6     | 0.30  | 1  | 0   | 29.0   |        |
| 2  | Paige Johnson      | 77 | 0      | 0.00  | 0   | 0    | .000  | 6    | 0.08  | 11    | 7   | 0.14 | 3   | 65   | 0.84  | 0        | 0   | 0     | 0.00  | 0  | 1   | 11.0   |        |
| 23 | Krista Kolbinskie  | 84 | 0      | 0.00  | 0   | 2    | .000  | 16   | 0.19  | 18    | 20  | 0.21 | 0   | 199  | 2.37  | 0        | 0   | 0     | 0.00  | 0  | 4   | 18.0   |        |
| 9  | Klaire Trainor     | 11 | 4      | 0.36  | 5   | 15   | -.067 | 0    | 0.00  | 2     | 2   | 0.18 | 0   | 4    | 0.36  | 0        | 1   | 1     | 0.09  | 0  | 0   | 6.5    |        |
|    | TEAM               | -  | -      | -     | -   | -    | -     | -    | -     | -     | -   | -    | 17  | -    | -     | -        | -   | -     | -     | -  | -   | -      |        |
|    | ARKANSAS           | 84 | 1175   | 13.99 | 419 | 2896 | .261  | 1124 | 13.38 | 109   | 183 | 1.30 | 75  | 1209 | 14.39 | 18       | 296 | 166.0 | 1.98  | 31 | 26  | 1450.0 |        |
|    | Opponents          | 84 | 981    | 11.68 | 428 | 2790 | .198  | 935  | 11.13 | 75    | 155 | 0.89 | 109 | 1082 | 12.88 | 27       | 346 | 200.0 | 2.38  | 65 | 27  | 1256.0 |        |

| Team Statistics      | AR    | OPP   |
|----------------------|-------|-------|
| ATTACK               |       |       |
| Kills                | 1175  | 981   |
| Errors               | 419   | 428   |
| Total Attacks        | 2896  | 2790  |
| Attack Pct           | .261  | .198  |
| Kills/Set            | 14.0  | 11.7  |
| SET                  |       |       |
| Assists              | 1124  | 935   |
| Attempts             | 2873  | 2778  |
| Assist Pct           | .391  | .337  |
| Assists/Set          | 13.4  | 11.1  |
| SERVE                |       |       |
| Aces                 | 109   | 75    |
| Errors               | 183   | 155   |
| Aces/Set             | 1.3   | 0.9   |
| SERVE RECEPTIONS     |       |       |
| Errors               | 75    | 109   |
| Errors/Set           | 0.9   | 1.3   |
| Attempts             | 1560  | 1710  |
| Reception Pct        | .952  | .936  |
| DEFENSE              |       |       |
| Digs                 | 1209  | 1082  |
| Digs/Set             | 14.4  | 12.9  |
| BLOCKING             |       |       |
| Block Solo           | 18    | 27    |
| Block Assist         | 296   | 346   |
| Total Blocks         | 166.0 | 200.0 |
| Blocks/Set           | 2.0   | 2.4   |
| Block Errors         | 31    | 65    |
| Ball handling errors | 26    | 27    |
| ATTENDANCE           |       |       |
| Total                | 8862  | 7345  |
| Dates/Avg Per Date   | 9/985 | 8/918 |
| Neutral site #/Avg   | 5/296 |       |
| Current win streak   | 0     | -     |
| Home win streak      | 3     | -     |

| Date    | Opponent             | Score | Score by set                  | Att. |
|---------|----------------------|-------|-------------------------------|------|
| Aug 25  | CSU BAKERSFIELD      | w 3-1 | 26-24,25-18,22-25,25-21       | 1257 |
| Aug 26  | ULM                  | w 3-0 | 25-14,25-9,25-13              | 563  |
| Aug 26  | UTAH STATE           | w 3-0 | 25-23,25-15,25-19             | 832  |
| Aug 31  | at K-State           | w 3-2 | 21-25,25-14,25-23,15-25,15-9  | 1528 |
| Sep 01  | vs #6 Wisconsin      | L 0-3 | 18-25,21-25,22-25             | 322  |
| Sep 02  | vs Syracuse          | w 3-0 | 25-22,25-13,25-16             | 341  |
| Sep 05  | ORAL ROBERTS         | w 3-0 | 25-20,25-22,25-21             | 639  |
| Sep 08  | vs #19 USC           | L 2-3 | 25-22,21-25,25-20,24-26,9-15  | 150  |
| Sep 08  | vs YALE              | w 3-0 | 33-31,25-18,25-17             | 200  |
| Sep 09  | at UC Santa Barbara  | w 3-2 | 16-25,25-20,25-19,21-25,15-11 | 300  |
| Sep 15  | vs Sam Houston State | w 3-0 | 25-16,25-20,25-15             | 468  |
| Sep 16  | at SMU               | w 3-2 | 25-17,23-25,21-25,25-22,15-13 | 593  |
| *Sep 20 | TENNESSEE            | w 3-0 | 25-17,25-19,25-21             | 833  |
| *Sep 24 | #3 FLORIDA           | L 2-3 | 22-25,25-21,16-25,25-23,13-15 | 1343 |
| *Sep 27 | at Alabama           | L 2-3 | 20-25,25-17,32-30,22-25,5-15  | 846  |
| *Oct 01 | at Auburn            | L 0-3 | 23-25,22-25,24-26             | 861  |
| *Oct 06 | OLE MISS             | w 3-2 | 25-18,13-25,25-23,23-25,15-12 | 1428 |
| *Oct 08 | at LSU               | L 2-3 | 23-25,25-21,25-19,25-27,12-15 | 996  |
| *Oct 13 | SOUTH CAROLINA       | w 3-0 | 25-19,25-15,25-14             | 1019 |
| *Oct 20 | at Texas A&M         | w 3-0 | 25-20,25-17,26-24             | 1056 |
| *Oct 22 | MISSISSIPPI STATE    | w 3-0 | 25-18,25-7,25-18              | 948  |
| *Oct 25 | at Georgia           | L 1-3 | 22-25,20-25,25-17,21-25       | 1165 |

Record in 3-set matches: 10-2

Record in 4-set matches: 1-1

Record in 5-set matches: 4-4





## SEC SEASON STATISTICS

| RECORD:        | OVERALL | HOME | AWAY | NEUTRAL |
|----------------|---------|------|------|---------|
| ALL GAMES      | 5-5     | 4-1  | 1-4  | 0-0     |
| CONFERENCE     | 5-5     | 4-1  | 1-4  | 0-0     |
| NON-CONFERENCE | 0-0     | 0-0  | 0-0  | 0-0     |

| #  | Player             | sp | Attack |       |     |      |       | Set |       | Serve |    |      | re | Dig |       | Blocking |     |       |       |    |     | points |
|----|--------------------|----|--------|-------|-----|------|-------|-----|-------|-------|----|------|----|-----|-------|----------|-----|-------|-------|----|-----|--------|
|    |                    |    | k      | k/s   | e   | ta   | pct   | a   | a/s   | sa    | se | sa/s |    | dig | dig/s | bs       | ba  | total | blk/s | be | bhe |        |
| 17 | Kori Ortiz         | 32 | 1      | 0.03  | 0   | 1    | 1.000 | 3   | 0.09  | 0     | 3  | 0.00 | 6  | 46  | 1.44  | 0        | 0   | 0     | 0.00  | 0  | 1   | 1.0    |
| 12 | Okiana Valle       | 39 | 1      | 0.03  | 0   | 2    | .500  | 42  | 1.08  | 6     | 15 | 0.15 | 7  | 138 | 3.54  | 0        | 0   | 0     | 0.00  | 0  | 0   | 7.0    |
| 6  | Fernanda Guitron   | 13 | 20     | 1.54  | 4   | 45   | .356  | 1   | 0.08  | 0     | 0  | 0.00 | 0  | 6   | 0.46  | 0        | 6   | 6     | 0.46  | 1  | 0   | 23.0   |
| 3  | Hailey Dirrigl     | 39 | 123    | 3.15  | 35  | 291  | .302  | 0   | 0.00  | 9     | 4  | 0.23 | 2  | 20  | 0.51  | 1        | 18  | 19    | 0.49  | 2  | 0   | 142.0  |
| 10 | Kelly O'Brien      | 39 | 49     | 1.26  | 17  | 106  | .302  | 0   | 0.00  | 0     | 0  | 0.00 | 1  | 13  | 0.33  | 4        | 41  | 45    | 1.15  | 6  | 0   | 73.5   |
| 8  | Elizabeth Pamphile | 39 | 69     | 1.77  | 30  | 153  | .255  | 2   | 0.05  | 2     | 4  | 0.05 | 0  | 12  | 0.31  | 1        | 33  | 34    | 0.87  | 3  | 0   | 88.5   |
| 21 | Pilar Victoria     | 39 | 202    | 5.18  | 73  | 537  | .240  | 10  | 0.26  | 10    | 9  | 0.26 | 7  | 106 | 2.72  | 5        | 26  | 31    | 0.79  | 1  | 1   | 230.0  |
| 1  | Rachel Rippee      | 39 | 14     | 0.36  | 5   | 41   | .220  | 440 | 11.28 | 6     | 12 | 0.15 | 0  | 79  | 2.03  | 2        | 22  | 24    | 0.62  | 5  | 14  | 33.0   |
| 7  | Reagan Robinson    | 25 | 53     | 2.12  | 19  | 164  | .207  | 3   | 0.12  | 1     | 3  | 0.04 | 2  | 13  | 0.52  | 1        | 3   | 4     | 0.16  | 2  | 0   | 56.5   |
| 23 | Krista Kolbinskie  | 39 | 0      | 0.00  | 0   | 1    | .000  | 7   | 0.18  | 11    | 7  | 0.28 | 0  | 105 | 2.69  | 0        | 0   | 0     | 0.00  | 0  | 3   | 11.0   |
| 9  | Klaire Trainor     | 4  | 0      | 0.00  | 0   | 0    | .000  | 0   | 0.00  | 0     | 1  | 0.00 | 0  | 0   | 0.00  | 0        | 0   | 0     | 0.00  | 0  | 0   | 0.0    |
| 2  | Paige Johnson      | 38 | 0      | 0.00  | 0   | 0    | .000  | 2   | 0.05  | 4     | 5  | 0.11 | 2  | 38  | 1.00  | 0        | 0   | 0     | 0.00  | 0  | 0   | 4.0    |
| 16 | Logan Brown        | 5  | 2      | 0.40  | 3   | 14   | -.071 | 0   | 0.00  | 0     | 1  | 0.00 | 0  | 1   | 0.20  | 0        | 1   | 1     | 0.20  | 0  | 0   | 2.5    |
|    | TEAM               | -  | -      | -     | -   | -    | -     | -   | -     | -     | -  | -    | 10 | -   | -     | -        | -   | -     | -     | -  | -   | -      |
|    | ARKANSAS           | 39 | 534    | 13.69 | 186 | 1355 | .257  | 510 | 13.08 | 49    | 64 | 1.26 | 37 | 577 | 14.79 | 14       | 150 | 89.0  | 2.28  | 20 | 19  | 672.0  |
|    | Opponents          | 39 | 493    | 12.64 | 208 | 1361 | .209  | 463 | 11.87 | 37    | 61 | 0.95 | 49 | 525 | 13.46 | 18       | 162 | 99.0  | 2.54  | 38 | 12  | 629.0  |

| Team Statistics      | AR     | OPP   |
|----------------------|--------|-------|
| ATTACK               |        |       |
| Kills                | 534    | 493   |
| Errors               | 186    | 208   |
| Total Attacks        | 1355   | 1361  |
| Attack Pct           | .257   | .209  |
| Kills/Set            | 13.7   | 12.6  |
| SET                  |        |       |
| Assists              | 510    | 463   |
| Attempts             | 1385   | 1358  |
| Assist Pct           | .368   | .341  |
| Assists/Set          | 13.1   | 11.9  |
| SERVE                |        |       |
| Aces                 | 49     | 37    |
| Errors               | 64     | 61    |
| Aces/Set             | 1.3    | 0.9   |
| SERVE RECEPTIONS     |        |       |
| Errors               | 37     | 49    |
| Errors/Set           | 0.9    | 1.3   |
| Attempts             | 751    | 806   |
| Reception Pct        | .951   | .939  |
| DEFENSE              |        |       |
| Digs                 | 577    | 525   |
| Digs/Set             | 14.8   | 13.5  |
| BLOCKING             |        |       |
| Block Solo           | 14     | 18    |
| Block Assist         | 150    | 162   |
| Total Blocks         | 89.0   | 99.0  |
| Blocks/Set           | 2.3    | 2.5   |
| Block Errors         | 20     | 38    |
| Ball handling errors | 19     | 12    |
| ATTENDANCE           |        |       |
| Total                | 5571   | 4924  |
| Dates/Avg Per Date   | 5/1114 | 5/985 |
| Neutral site #/Avg   | 0/0    | -     |
| Current win streak   | 0      | -     |
| Home win streak      | 3      | -     |

| Date    | Opponent          | Score | Score by set                  | Att. |
|---------|-------------------|-------|-------------------------------|------|
| *Sep 20 | TENNESSEE         | w 3-0 | 25-17,25-19,25-21             | 833  |
| *Sep 24 | #3 FLORIDA        | L 2-3 | 22-25,25-21,16-25,25-23,13-15 | 1343 |
| *Sep 27 | at Alabama        | L 2-3 | 20-25,25-17,32-30,22-25,5-15  | 846  |
| *Oct 01 | at Auburn         | L 0-3 | 23-25,22-25,24-26             | 861  |
| *Oct 06 | OLE MISS          | w 3-2 | 25-18,13-25,25-23,23-25,15-12 | 1428 |
| *Oct 08 | at LSU            | L 2-3 | 23-25,25-21,25-19,25-27,12-15 | 996  |
| *Oct 13 | SOUTH CAROLINA    | w 3-0 | 25-19,25-15,25-14             | 1019 |
| *Oct 20 | at Texas A&M      | w 3-0 | 25-20,25-17,26-24             | 1056 |
| *Oct 22 | MISSISSIPPI STATE | w 3-0 | 25-18,25-7,25-18              | 948  |
| *Oct 25 | at Georgia        | L 1-3 | 22-25,20-25,25-17,21-25       | 1165 |

Record in 3-set matches: 4-1  
Record in 4-set matches: 0-1  
Record in 5-set matches: 1-3



## RADIO/TV HEADSHOT ROSTER



**1 RACHEL RIPPEE**  
Soph. | S | 6-0  
Springfield, Mo.



**2 PAIGE JOHNSON**  
Fr. | L/DS | 5-6  
Pleasant Hill, Mo.



**3 HAILEY DIRRIGL**  
Fr. | OH | 6-2  
Phoenix, Ariz.



**5 KENZIE STINNETT**  
Fr. | S | 5-9  
Carl Junction, Mo.



**6 FERNANDA GUITRON**  
R-Soph. | OPP | 6-0  
Guadalajara, Mexico



**7 REAGAN ROBINSON**  
Soph. | OH | 5-11  
Fayetteville, Ark.



**8 ELIZABETH PAMPHILE**  
Fr. | MB | 6-1  
Orlando, Fla.



**9 KLAIRE TRAINOR**  
Fr. | OH | 5-8  
Springdale, Ark.



**10 KELLY O'BRIEN**  
Jr. | MB | 6-1  
Long Beach, Calif.



**11 KILEY TILLER**  
Fr. | MB | 6-3  
Carthage, Mo.



**12 OKIANA VALLE**  
Jr. | L/DS | 5-2  
Barceloneta, Puerto Rico



**15 MAIA STRIPP**  
Fr. | MB | 6-3  
Roskilde, Denmark



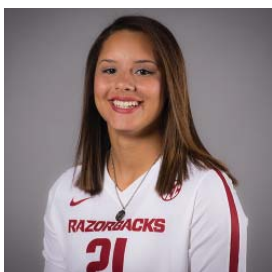
**16 LOGAN BROWN**  
Fr. | OH | 6-0  
Dallas, Texas



**17 KORI ORTIZ**  
Sr. | L/DS | 5-5  
Southlake, Texas



**18 SAVANNAH WAGNER**  
Fr. | OH | 5-9  
Mount Vernon, Texas



**21 PILAR VICTORIA**  
R-Sr. | OH | 5-11  
Caguas, Puerto Rico



**23 KRISTA KOLBINSKIE**  
Sr. | L/DS | 5-9  
San Antonio, Texas



**JASON WATSON**  
Head Coach  
Second Season



**JON NEWMAN-GONCHAR**  
Associate Head Coach  
Second Season



**MEGAN WARGO-KEARNEY**  
Assistant Coach  
First Season

