

## FINAL SCORE



**Northeastern State  
Univ.**

**74**



**ARKANSAS**

**82**

**November 02, 2017 • Fayetteville, Ark. (Bud Walton Arena)**

## FINAL STATISTICS

Official Basketball Box Score -- Game Totals -- Final Statistics  
 Northeastern State Univ. vs ARKANSAS  
 11/2/2017 7:02 p.m. at Fayetteville, Ark. (Bud Walton Arena)



Northeastern State Univ. 74 -

#	Player	g	Total		3-Ptr		Rebounds			PF	TP	A	TO	Blk	Stl	Min
			FG-FGA	FG-FGA	FT-FTA	Off	Def	Tot								
12	GRIFFIN,MIRANDA	g	6-11	5-9	0-2	1	4	5	2	17	3	0	0	0	27	
14	HAYES,CENIA	g	2-6	2-6	2-2	1	4	5	0	8	0	1	0	1	18	
21	BROOKS,TREE	g	2-7	1-3	3-4	0	1	1	3	8	1	2	0	0	20	
23	ELDRED,BAILEE	g	2-7	1-1	2-2	2	6	8	3	7	3	2	0	2	20	
24	STRANGE,DESTINY	f	3-10	0-4	0-0	1	3	4	3	6	3	1	0	0	29	
04	HILL,ALEXIS		1-2	1-2	0-2	0	0	0	3	3	1	1	0	0	19	
15	CUNNINGHAM,CAILEY		0-2	0-1	0-0	2	0	2	0	0	1	0	0	0	7	
20	LONG,CAITLYN		3-6	1-3	2-2	3	4	7	1	9	1	0	0	1	24	
32	BLEVINS,LAURYN		4-10	1-3	2-2	2	4	6	4	11	0	2	3	2	17	
33	BERTRAND,JOI		0-4	0-0	2-2	1	1	2	2	2	0	4	1	1	12	
34	HELLYER,MORGAN		1-3	1-3	0-0	1	0	1	1	3	0	1	0	0	7	
TEAM						1	4	5	0		0					
TOTALS			24-68	13-35	13-18	15	31	46	22	74	13	14	4	7	200	

Deadball Rebounds: 3,3

FG %	1st Half: 13-35	37.1%	2nd Half: 11-33	33.3%	Game: 24-68	35.3%									
	1st Qtr: 5-18	27.8%	2nd Qtr: 8-17	47.1%	3rd Qtr: 4-14	28.6%	4th Qtr: 7-19	36.8%							
3FG %	1st Half: 8-19	42.1%	2nd Half: 5-16	31.3%	Game: 13-35	37.1%									
	1st Qtr: 2-8	25.0%	2nd Qtr: 6-11	54.5%	3rd Qtr: 1-6	16.7%	4th Qtr: 4-10	40.0%							
FT %	1st Half: 4-4	100.0%	2nd Half: 9-14	64.3%	Game: 13-18	72.2%									
	1st Qtr: 2-2	100.0%	2nd Qtr: 2-2	100.0%	3rd Qtr: 4-6	66.7%	4th Qtr: 5-8	62.5%							

ARKANSAS 82 -

#	Player	g	Total		3-Ptr		Rebounds			PF	TP	A	TO	Blk	Stl	Min
			FG-FGA	FG-FGA	FT-FTA	Off	Def	Tot								
03	MONK,MALICA	g	4-14	0-2	6-8	2	3	5	3	14	7	1	0	3	34	
10	WILLIAMS,KIARA	f	2-3	0-0	1-2	4	2	6	3	5	0	0	1	0	13	
14	MASON,JAILYN	g	4-12	1-3	0-0	0	7	7	1	9	3	2	1	2	31	
21	COSPER,DEVIN	g	11-23	6-9	3-4	1	4	5	1	31	1	2	1	2	29	
22	ZIMMERMAN,BAILEY	f	0-7	0-4	0-0	2	2	4	2	0	1	2	0	1	30	
01	NORTHCROSS-BAKER,RA		4-8	3-6	6-10	1	2	3	1	17	2	1	0	4	22	
04	SWENSON,KEIRYN		0-2	0-0	0-0	1	2	3	2	0	2	0	0	0	9	
13	SPANGLER,GRAYCE		0-1	0-0	0-0	0	0	0	0	0	0	0	0	0	2	
20	STOUT,SYDNEY		0-0	0-0	0-0	0	0	0	0	0	0	0	0	0	2	
24	THOMAS,TAYLAH		3-4	0-1	0-1	3	5	8	1	6	0	0	0	0	24	
30	WEAVER,MACY		0-0	0-0	0-0	2	0	2	0	0	0	1	0	0	3	
TEAM						0	3	3	0		0					
TOTALS			28-74	10-25	16-25	16	30	46	14	82	16	9	3	12	199	

Deadball Rebounds: 5,1

FG %	1st Half: 9-35	25.7%	2nd Half: 19-39	48.7%	Game: 28-74	37.8%									
	1st Qtr: 5-17	29.4%	2nd Qtr: 4-18	22.2%	3rd Qtr: 7-18	38.9%	4th Qtr: 12-21	57.1%							
3FG %	1st Half: 4-13	30.8%	2nd Half: 6-12	50.0%	Game: 10-25	40.0%									
	1st Qtr: 3-8	37.5%	2nd Qtr: 1-5	20.0%	3rd Qtr: 1-4	25.0%	4th Qtr: 5-8	62.5%							
FT %	1st Half: 13-18	72.2%	2nd Half: 3-7	42.9%	Game: 16-25	64.0%									
	1st Qtr: 7-10	70.0%	2nd Qtr: 6-8	75.0%	3rd Qtr: 3-5	60.0%	4th Qtr: 0-2	00.0%							

Officials: Brian Hall, Luis Gonzalez, Katie Lukanich  
 Technical Fouls: Northeastern State Univ.- None. ARKANSAS- None.

EXHIBITION GAME

Score by periods	1st	2nd	3rd	4th	Total	In	Off	2nd	Fast	
					Points	Paint	T/O	Chance	Break	Bench
Northeastern State Univ.	14	24	13	23	74	14	6	13	2	28
ARKANSAS	20	15	18	29	82	30	14	13	12	23

Last FG - NESU 4th-00:35, AR 4th-01:01.

Largest lead - Northeastern State Univ. by 5 3rd-09:05; ARKANSAS by 13 1st-03:09

NESU led for 9:13. AR led for 24:08. Game was tied for 6:39.

Score tied - 9 times; Lead changed - 6 times



Official Basketball Box Score -- Game Totals -- First Half Statistics  
 Northeastern State Univ. vs ARKANSAS  
 11/2/2017 7:02 p.m. at Fayetteville, Ark. (Bud Walton Arena)



Northeastern State Univ. 38 •

##	Player	g	Total		3-Ptr		Rebounds			PF	TP	A	TO	Blk	Stl	Min
			FG-FGA	FG-FGA	FT-FTA	Off	Def	Tot								
12	GRIFFIN,MIRANDA	g	3-4	3-3	0-0	0	1	1	1	9	1	0	0	0	10	
14	HAYES,CENIA	g	1-3	1-3	0-0	0	3	3	0	3	0	0	0	0	10	
21	BROOKS,TREE	g	1-4	1-2	0-0	0	0	0	2	3	1	1	0	0	8	
23	ELDRED,BAILEE	g	1-4	1-1	2-2	2	4	6	2	5	1	1	0	0	9	
24	STRANGE,DESTINY	f	1-4	0-3	0-0	1	2	3	1	2	3	1	0	0	18	
04	HILL,ALEXIS		1-1	1-1	0-0	0	0	0	2	3	1	1	0	0	11	
15	CUNNINGHAM,CAILEY		0-2	0-1	0-0	1	0	1	0	0	1	0	0	0	4	
20	LONG,CAITLYN		1-3	0-2	0-0	1	0	1	0	2	0	0	0	1	10	
32	BLEVINS,LAURYN		3-5	0-1	0-0	0	2	2	3	6	0	0	2	1	7	
33	BERTRAND,JOI		0-3	0-0	2-2	1	1	2	1	2	0	3	0	1	9	
34	HELLYER,MORGAN		1-2	1-2	0-0	0	0	0	1	3	0	0	0	0	4	
TEAM						0	2	2	0		0					
Totals			13-35	8-19	4-4	6	15	21	13	38	8	7	2	3	100	

FG %	1st Qtr	5-18	27.8%	2nd Qtr	8-17	47.1%	Half:	13-35	37.1%
3FG %	1st Qtr	2-8	25.0%	2nd Qtr	6-11	54.5%	Half:	8-19	42.1%
FT %	1st Qtr	2-2	100.0%	2nd Qtr	2-2	100.0%	Half:	4-4	100.0%

ARKANSAS 35 •

##	Player	g	Total		3-Ptr		Rebounds			PF	TP	A	TO	Blk	Stl	Min
			FG-FGA	FG-FGA	FT-FTA	Off	Def	Tot								
03	MONK,MALICA	g	1-7	0-2	5-6	1	1	2	0	7	2	0	0	0	16	
10	WILLIAMS,KIARA	f	2-3	0-0	1-2	4	1	5	2	5	0	0	1	0	8	
14	MASON,JAILYN	g	0-6	0-1	0-0	0	2	2	0	0	1	1	0	2	15	
21	COSPER,DEVIN	g	3-9	1-3	2-3	0	4	4	1	9	0	1	1	1	15	
22	ZIMMERMAN,BAILEY	f	0-1	0-1	0-0	0	1	1	0	0	0	0	0	1	14	
01	NORTHCROSS-BAKER,RA		3-6	3-5	5-7	0	2	2	1	14	0	1	0	2	9	
04	SWENSON,KEIRYN		0-1	0-0	0-0	1	2	3	1	0	1	0	0	0	7	
13	SPANGLER,GRAYCE		0-1	0-0	0-0	0	0	0	0	0	0	0	0	0	2	
20	STOUT,SYDNEY		0-0	0-0	0-0	0	0	0	0	0	0	0	0	0	2	
24	THOMAS,TAYLAH		0-1	0-1	0-0	0	1	1	0	0	0	0	0	0	9	
30	WEAVER,MACY		0-0	0-0	0-0	2	0	2	0	0	0	1	0	0	3	
TEAM						0	2	2	0		0					
Totals			9-35	4-13	13-18	8	16	24	5	35	4	4	2	6	100	

FG %	1st Qtr	5-17	29.4%	2nd Qtr	4-18	22.2%	Half:	9-35	25.7%
3FG %	1st Qtr	3-8	37.5%	2nd Qtr	1-5	20.0%	Half:	4-13	30.8%
FT %	1st Qtr	7-10	70.0%	2nd Qtr	6-8	75.0%	Half:	13-18	72.2%

Officials: Brian Hall, Luis Gonzalez, Katie Lukanich  
 Technical Fouls: Northeastern State Univ.- None. ARKANSAS- None.  
 EXHIBITION GAME

Score by periods	1st	2nd	3rd	4th	Total	Rebounds	In Paint	Off T/O	2nd Chance	Fast Break	Bench
Northeastern State Univ.	14	24	13	23	74	NESU	6	2	4	0	16
ARKANSAS	20	15	18	29	82		8	4	5	5	14

Last FG - NESU 2nd-00:45, AR 2nd-04:22.  
 NESU led for 1:11. AR led for 14:46. Game was tied for 4:03.

Score tied - 4 times  
 Lead changed - 3 times

**Northeastern State Univ. vs ARKANSAS**  
**11/2/2017; 7:02 p.m. at Fayetteville, Ark. (Bud Walton Arena)**  
**Period 1 Play-By-Play**



VISITORS: Northeastern State Univ.	Time	Score	Margin	HOME: ARKANSAS
MISSED 3PTR by STRANGE,DESTINY	09:35			
	09:35			REBOUND (DEF) by ZIMMERMAN,BAILEY
	09:27			MISSED 3PTR by MASON,JAILYN
REBOUND (DEF) by ELDRED,BAILEE	09:27			
MISSED JUMPER by ELDRED,BAILEE	09:01			
REBOUND (OFF) by ELDRED,BAILEE	09:01			
MISSED JUMPER by ELDRED,BAILEE	08:58			
REBOUND (OFF) by ELDRED,BAILEE	08:58			
MISSED LAYUP by GRIFFIN,MIRANDA	08:42			
	08:42			REBOUND (DEF) by COSPER,DEVIN
	08:33			MISSED 3PTR by ZIMMERMAN,BAILEY
	08:33			REBOUND (OFF) by WILLIAMS,KIARA
FOUL by ELDRED,BAILEE	08:30			
	08:26			MISSED 3PTR by COSPER,DEVIN
	08:26			REBOUND (OFF) by WILLIAMS,KIARA
	08:22	2-0	H 2	GOOD! LAYUP by WILLIAMS,KIARA [PNT]
MISSED 3PTR by HAYES,CENIA	08:00			
	08:00			REBOUND (DEF) by COSPER,DEVIN
	07:50			MISSED LAYUP by COSPER,DEVIN
REBOUND (DEADB) by TEAM	07:50			
	07:49			FOUL by WILLIAMS,KIARA
SUB IN: BLEVINS,LAURYN	07:49			
SUB OUT: HAYES,CENIA	07:49			
GOOD! JUMPER by BLEVINS,LAURYN [PNT]	07:35	2-2	T	
	07:26			MISSED JUMPER by MASON,JAILYN
	07:26			REBOUND (DEADB) by TEAM
FOUL by BLEVINS,LAURYN	07:24			
	07:20			MISSED JUMPER by MONK,MALICA
REBOUND (DEF) by TEAM	07:20			
SUB IN: HILL,ALEXIS	07:16			
SUB OUT: BROOKS,TREE	07:16			
MISSED JUMPER by BLEVINS,LAURYN	07:08			
	07:08			BLOCK by WILLIAMS,KIARA
	07:08			REBOUND (DEF) by TEAM
	06:57			MISSED LAYUP by WILLIAMS,KIARA
BLOCK by BLEVINS,LAURYN	06:57			
REBOUND (DEF) by BLEVINS,LAURYN	06:56			
GOOD! JUMPER by BLEVINS,LAURYN	06:39	2-4	V 2	
ASSIST by ELDRED,BAILEE	06:39			
FOUL by BLEVINS,LAURYN	06:31			
SUB IN: BERTRAND,JOI	06:31			
SUB OUT: BLEVINS,LAURYN	06:31			
FOUL by GRIFFIN,MIRANDA	06:20			
	06:20	3-4	V 1	GOOD! FT by MONK,MALICA
	06:20	4-4	T	GOOD! FT by MONK,MALICA
SUB IN: HAYES,CENIA	06:20			
SUB OUT: GRIFFIN,MIRANDA	06:20			
	06:20			SUB IN: THOMAS,TAYLAH
	06:20			SUB IN: NORTHCROSS-BAKER,RA
	06:20			SUB OUT: WILLIAMS,KIARA
	06:20			SUB OUT: MASON,JAILYN
MISSED JUMPER by BERTRAND,JOI	06:06			
	06:06			REBOUND (DEF) by THOMAS,TAYLAH
	05:59	6-4	H 2	GOOD! LAYUP by COSPER,DEVIN [FB/PNT]
FOUL by BERTRAND,JOI	05:59			
	05:59	7-4	H 3	GOOD! FT by COSPER,DEVIN
TURNOVER by STRANGE,DESTINY	05:43			
	05:43			SUB IN: SWENSON,KEIRYN
	05:43			SUB OUT: ZIMMERMAN,BAILEY
FOUL by STRANGE,DESTINY	05:35			
	05:35			MISSED FT by COSPER,DEVIN
	05:35			REBOUND (DEADB) by TEAM
	05:35	8-4	H 4	GOOD! FT by COSPER,DEVIN
	05:17			FOUL by NORTHCROSS-BAKER,RA
MISSED LAYUP by BERTRAND,JOI	05:12			
	05:12			REBOUND (DEF) by SWENSON,KEIRYN
	05:04	11-4	H 7	GOOD! 3PTR by NORTHCROSS-BAKER,RA [FB]
	05:04			ASSIST by MONK,MALICA
MISSED JUMPER by ELDRED,BAILEE	04:35			

VISITORS: Northeastern State Univ.	Time	Score	Margin	HOME: ARKANSAS
	04:35			REBOUND (DEF) by SWENSON,KEIRYN
	04:27	14-4	H 10	GOOD! 3PTR by NORTHCROSS-BAKER,RA
	04:27			ASSIST by MONK,MALICA
TIMEOUT 30SEC	04:24			
SUB IN: LONG,CAITLYN	04:24			
SUB IN: HELLYER,MORGAN	04:24			
SUB OUT: HAYES,CENIA	04:24			
SUB OUT: STRANGE,DESTINY	04:24			
	04:24			SUB IN: MASON,JAILYN
	04:24			SUB OUT: MONK,MALICA
	04:10			FOUL by COSPER,DEVIN
GOOD! FT by ELDRED,BAILEE	04:10	14-5	H 9	
GOOD! FT by ELDRED,BAILEE	04:10	14-6	H 8	
FOUL by HELLYER,MORGAN	04:02			
	04:02	15-6	H 9	GOOD! FT by NORTHCROSS-BAKER,RA
	04:02	16-6	H 10	GOOD! FT by NORTHCROSS-BAKER,RA
TURNOVER by ELDRED,BAILEE	03:47			
	03:46			STEAL by NORTHCROSS-BAKER,RA
	03:41			TURNOVER by COSPER,DEVIN
STEAL by BERTRAND,JOI	03:35			
TURNOVER by BERTRAND,JOI	03:34			
	03:32			STEAL by COSPER,DEVIN
	03:26			MISSED 3PTR by THOMAS,TAYLAH
REBOUND (DEF) by ELDRED,BAILEE	03:26			
MISSED 3PTR by HELLYER,MORGAN	03:17			
	03:17			REBOUND (DEF) by MASON,JAILYN
	03:09	19-6	H 13	GOOD! 3PTR by NORTHCROSS-BAKER,RA
	03:09			ASSIST by MASON,JAILYN
TURNOVER by BERTRAND,JOI	02:45			
	02:44			STEAL by MASON,JAILYN
	02:38			MISSED 3PTR by NORTHCROSS-BAKER,RA
REBOUND (DEF) by ELDRED,BAILEE	02:38			
GOOD! 3PTR by HELLYER,MORGAN	02:20	19-9	H 10	
	02:08			MISSED JUMPER by MASON,JAILYN
REBOUND (DEF) by ELDRED,BAILEE	02:08			
GOOD! 3PTR by ELDRED,BAILEE	01:57	19-12	H 7	
	01:55			TIMEOUT 30SEC
SUB IN: STRANGE,DESTINY	01:55			
SUB IN: BLEVINS,LAURYN	01:55			
SUB OUT: BERTRAND,JOI	01:55			
SUB OUT: ELDRED,BAILEE	01:55			
	01:55			SUB IN: STOUT,SYDNEY
	01:55			SUB IN: SPANGLER,GRAYCE
	01:55			SUB OUT: COSPER,DEVIN
	01:55			SUB OUT: SWENSON,KEIRYN
	01:39			MISSED LAYUP by SPANGLER,GRAYCE
BLOCK by BLEVINS,LAURYN	01:39			
REBOUND (DEF) by STRANGE,DESTINY	01:37			
MISSED 3PTR by LONG,CAITLYN	01:16			
	01:16			REBOUND (DEF) by NORTHCROSS-BAKER,RA
SUB IN: BROOKS,TREE	01:08			
SUB OUT: HILL,ALEXIS	01:08			
	01:03			MISSED JUMPER by MASON,JAILYN
REBOUND (DEF) by BLEVINS,LAURYN	01:03			
GOOD! JUMPER by BLEVINS,LAURYN	00:41	19-14	H 5	
ASSIST by BROOKS,TREE	00:41			
	00:31			TURNOVER by MASON,JAILYN
STEAL by BLEVINS,LAURYN	00:30			
MISSED 3PTR by BLEVINS,LAURYN	00:21			
	00:21			REBOUND (DEF) by MASON,JAILYN
FOUL by BROOKS,TREE	00:14			
	00:14			MISSED FT by NORTHCROSS-BAKER,RA
	00:14			REBOUND (DEADB) by TEAM
	00:14			MISSED FT by NORTHCROSS-BAKER,RA
	00:14			REBOUND (DEADB) by TEAM
	00:14	20-14	H 6	GOOD! FT by NORTHCROSS-BAKER,RA
SUB IN: CUNNINGHAM,CAILEY	00:14			
SUB OUT: HELLYER,MORGAN	00:14			
	00:14			SUB IN: WEAVER,MACY
	00:14			SUB OUT: THOMAS,TAYLAH
MISSED 3PTR by CUNNINGHAM,CAILEY	00:04			
	00:04			REBOUND (DEF) by NORTHCROSS-BAKER,RA

<b>Period 1-only</b>	<b>In Paint</b>	<b>Off T/O</b>	<b>2nd Chance</b>	<b>Fast Break</b>	<b>Bench</b>	
NESU	2	0	0	0	9	Score tied - 2 times
AR	4	1	2	5	12	Lead changed - 2 times

**Northeastern State Univ. vs ARKANSAS**  
**11/2/2017; 7:02 p.m. at Fayetteville, Ark. (Bud Walton Arena)**  
**Period 2 Play-By-Play**



VISITORS: Northeastern State Univ.	Time	Score	Margin	HOME: ARKANSAS
SUB IN: CUNNINGHAM,CAILEY	10:00			
SUB IN: BLEVINS,LAURYN	10:00			
SUB IN: LONG,CAITLYN	10:00			
SUB OUT: GRIFFIN,MIRANDA	10:00			
SUB OUT: HAYES,CENIA	10:00			
SUB OUT: ELDRED,BAILEE	10:00			
	10:00			SUB IN: WEAVER,MACY
	10:00			SUB IN: SWENSON,KEIRYN
	10:00			SUB OUT: WILLIAMS,KIARA
	10:00			SUB OUT: MASON,JAILYN
	09:50			MISSED JUMPER by COSPER,DEVIN
	09:50			REBOUND (OFF) by WEAVER,MACY
	09:47			TURNOVER by WEAVER,MACY
	09:22			FOUL by SWENSON,KEIRYN
MISSED 3PTR by STRANGE,DESTINY	09:19			
	09:19			REBOUND (DEF) by MONK,MALICA
	09:13			MISSED 3PTR by MONK,MALICA
REBOUND (DEF) by TEAM	09:13			
MISSED 3PTR by LONG,CAITLYN	09:00			
	09:00			REBOUND (DEF) by TEAM
	08:45			MISSED JUMPER by COSPER,DEVIN
	08:45			REBOUND (OFF) by WEAVER,MACY
	08:41			MISSED 3PTR by COSPER,DEVIN
	08:41			REBOUND (OFF) by SWENSON,KEIRYN
	08:35			MISSED LAYUP by SWENSON,KEIRYN
REBOUND (DEF) by STRANGE,DESTINY	08:35			
MISSED JUMPER by BROOKS,TREE	08:17			
REBOUND (OFF) by LONG,CAITLYN	08:17			
GOOD! LAYUP by LONG,CAITLYN [PNT]	08:14	20-16	H 4	
	08:04	23-16	H 7	GOOD! 3PTR by COSPER,DEVIN
	08:04			ASSIST by SWENSON,KEIRYN
GOOD! 3PTR by BROOKS,TREE	07:32	23-19	H 4	
ASSIST by CUNNINGHAM,CAILEY	07:32			
	07:19			MISSED LAYUP by COSPER,DEVIN
REBOUND (DEADB) by TEAM	07:19			
SUB IN: ELDRED,BAILEE	07:19			
SUB OUT: BLEVINS,LAURYN	07:19			
	07:19			SUB IN: WILLIAMS,KIARA
	07:19			SUB OUT: WEAVER,MACY
MISSED JUMPER by BROOKS,TREE	06:52			
REBOUND (OFF) by CUNNINGHAM,CAILEY	06:52			
MISSED JUMPER by CUNNINGHAM,CAILEY	06:48			
	06:48			BLOCK by COSPER,DEVIN
	06:47			REBOUND (DEF) by COSPER,DEVIN
	06:43			MISSED JUMPER by MONK,MALICA
	06:43			REBOUND (OFF) by WILLIAMS,KIARA
FOUL by ELDRED,BAILEE	06:39			
	06:39			MISSED FT by WILLIAMS,KIARA
	06:39			REBOUND (DEADB) by TEAM
	06:39	24-19	H 5	GOOD! FT by WILLIAMS,KIARA
SUB IN: BERTRAND,JOI	06:39			
SUB OUT: ELDRED,BAILEE	06:39			
	06:39			SUB IN: MASON,JAILYN
	06:39			SUB OUT: SWENSON,KEIRYN
MISSED 3PTR by STRANGE,DESTINY	06:17			
REBOUND (OFF) by BERTRAND,JOI	06:17			
MISSED 3PTR by BROOKS,TREE	06:11			
	06:11			REBOUND (DEF) by COSPER,DEVIN
	05:59			MISSED JUMPER by MASON,JAILYN
REBOUND (DEF) by BERTRAND,JOI	05:59			
TURNOVER by BROOKS,TREE	05:47			
	05:46			STEAL by ZIMMERMAN,BAILEY
FOUL by BROOKS,TREE	05:42			
	05:42	25-19	H 6	GOOD! FT by MONK,MALICA
	05:42			MISSED FT by MONK,MALICA
	05:42			REBOUND (OFF) by WILLIAMS,KIARA
SUB IN: HAYES,CENIA	05:42			
SUB IN: GRIFFIN,MIRANDA	05:42			
SUB IN: HILL,ALEXIS	05:42			



VISITORS: Northeastern State Univ.	Time	Score	Margin	HOME: ARKANSAS
SUB OUT: CUNNINGHAM,CAILEY	05:42			
SUB OUT: BROOKS,TREE	05:42			
SUB OUT: LONG,CAITLYN	05:42			
	05:41	27-19	H 8	GOOD! LAYUP by WILLIAMS,KIARA [PNT]
	05:16			FOUL by WILLIAMS,KIARA
GOOD! FT by BERTRAND,JOI	05:16	27-20	H 7	
GOOD! FT by BERTRAND,JOI	05:16	27-21	H 6	
FOUL by HILL,ALEXIS	05:14			
	05:03	29-21	H 8	GOOD! LAYUP by MONK,MALICA [PNT]
MISSED LAYUP by BERTRAND,JOI	04:36			
	04:36			REBOUND (DEF) by WILLIAMS,KIARA
	04:22	31-21	H 10	GOOD! JUMPER by COSPER,DEVIN
TURNOVER by BERTRAND,JOI	04:05			
	04:04			STEAL by MASON,JAILYN
	03:55			MISSED 3PTR by MONK,MALICA
REBOUND (DEF) by HAYES,CENIA	03:55			
GOOD! 3PTR by GRIFFIN,MIRANDA	03:31	31-24	H 7	
ASSIST by HILL,ALEXIS	03:31			
	03:17			MISSED JUMPER by MONK,MALICA
REBOUND (DEF) by HAYES,CENIA	03:17			
GOOD! 3PTR by HAYES,CENIA	03:06	31-27	H 4	
ASSIST by GRIFFIN,MIRANDA	03:06			
	03:03			TIMEOUT 30SEC
SUB IN: BLEVINS,LAURYN	03:03			
SUB OUT: BERTRAND,JOI	03:03			
	03:03			SUB IN: THOMAS,TAYLAH
	03:03			SUB IN: NORTHCROSS-BAKER,RA
	03:03			SUB OUT: WILLIAMS,KIARA
	03:03			SUB OUT: COSPER,DEVIN
	02:51			MISSED JUMPER by MASON,JAILYN
REBOUND (DEF) by HAYES,CENIA	02:51			
GOOD! 3PTR by HILL,ALEXIS	02:22	31-30	H 1	
ASSIST by STRANGE,DESTINY	02:22			
FOUL by BLEVINS,LAURYN	02:11			
	02:11	32-30	H 2	GOOD! FT by NORTHCROSS-BAKER,RA
	02:11	33-30	H 3	GOOD! FT by NORTHCROSS-BAKER,RA
SUB IN: LONG,CAITLYN	02:11			
SUB OUT: BLEVINS,LAURYN	02:11			
GOOD! 3PTR by GRIFFIN,MIRANDA	02:00	33-33	T	
ASSIST by STRANGE,DESTINY	02:00			
	01:44			MISSED LAYUP by MONK,MALICA
	01:44			REBOUND (OFF) by MONK,MALICA
	01:39			TURNOVER by NORTHCROSS-BAKER,RA
STEAL by LONG,CAITLYN	01:38			
MISSED 3PTR by HAYES,CENIA	01:23			
REBOUND (OFF) by STRANGE,DESTINY	01:23			
GOOD! LAYUP by STRANGE,DESTINY [PNT]	01:20	33-35	V 2	
FOUL by HILL,ALEXIS	01:13			
	01:13	34-35	V 1	GOOD! FT by MONK,MALICA
	01:13	35-35	T	GOOD! FT by MONK,MALICA
GOOD! 3PTR by GRIFFIN,MIRANDA	00:45	35-38	V 3	
ASSIST by STRANGE,DESTINY	00:45			
	00:28			MISSED LAYUP by NORTHCROSS-BAKER,RA
REBOUND (DEF) by GRIFFIN,MIRANDA	00:28			
TURNOVER by HILL,ALEXIS	00:05			
	00:04			STEAL by NORTHCROSS-BAKER,RA
	00:01			MISSED 3PTR by NORTHCROSS-BAKER,RA
REBOUND (DEADB) by TEAM	00:00			

Northeastern State Univ. 38, ARKANSAS 35

Period 2-only	In Paint	Off T/O	2nd Chance	Fast Break	Bench	
NESU	4	2	4	0	7	Score tied - 2 times
AR	4	3	3	0	2	Lead changed - 2 times

Official Basketball Box Score -- Game Totals -- Second Half Statistics  
 Northeastern State Univ. vs ARKANSAS  
 11/2/2017 7:02 p.m. at Fayetteville, Ark. (Bud Walton Arena)



Northeastern State Univ. 36 •

##	Player	g	Total			3-Ptr			Rebounds			PF	TP	A	TO	Blk	Stl	Min
			FG-FGA	FG-FGA	FT-FTA	FG-FGA	FG-FGA	FT-FTA	Off	Def	Tot							
12	GRIFFIN,MIRANDA	g	3-7	2-6	0-2	1	3	4	1	3	4	1	8	2	0	0	0	17
14	HAYES,CENIA	g	1-3	1-3	2-2	1	1	2	0	1	2	0	5	0	1	0	1	8
21	BROOKS,TREE	g	1-3	0-1	3-4	0	1	1	1	1	1	1	5	0	1	0	0	12
23	ELDRED,BAILEE	g	1-3	0-0	0-0	0	2	2	1	2	2	1	2	2	1	0	2	11
24	STRANGE,DESTINY	f	2-6	0-1	0-0	0	1	1	2	4	0	0	0	0	0	0	0	11
04	HILL,ALEXIS		0-1	0-1	0-2	0	0	0	1	0	0	1	0	0	0	0	0	8
15	CUNNINGHAM,CAILEY		0-0	0-0	0-0	1	0	1	0	0	1	0	0	0	0	0	0	3
20	LONG,CAITLYN		2-3	1-1	2-2	2	4	6	1	7	1	7	1	0	0	0	0	14
32	BLEVINS,LAURYN		1-5	1-2	2-2	2	2	4	1	5	0	5	0	2	1	1	1	10
33	BERTRAND,JOI		0-1	0-0	0-0	0	0	0	1	0	0	1	0	0	1	1	0	3
34	HELLYER,MORGAN		0-1	0-1	0-0	1	0	1	0	0	1	0	0	0	1	0	0	3
TEAM						1	2	3	0			0		0				
Totals			11-33	5-16	9-14	9	16	25	9	36	5	7	2	4				100
FG %	3rd Qtr	4-14	28.6%	4th Qtr	7-19	36.8%	Half:	11-33	33.3%									
3FG %	3rd Qtr	1-6	16.7%	4th Qtr	4-10	40.0%	Half:	5-16	42.1%									
FT %	3rd Qtr	4-6	66.7%	4th Qtr	5-8	62.5%	Half:	9-14	64.3%									

ARKANSAS 47 •

##	Player	g	Total			3-Ptr			Rebounds			PF	TP	A	TO	Blk	Stl	Min
			FG-FGA	FG-FGA	FT-FTA	FG-FGA	FG-FGA	FT-FTA	Off	Def	Tot							
03	MONK,MALICA	g	3-7	0-0	1-2	1	2	3	3	7	5	1	0	3	18			
10	WILLIAMS,KIARA	f	0-0	0-0	0-0	0	1	1	1	0	0	0	0	0	5			
14	MASON,JAILYN	g	4-6	1-2	0-0	0	5	5	1	9	2	1	1	0	16			
21	COSPER,DEVIN	g	8-14	5-6	1-1	1	0	1	0	22	1	1	0	1	14			
22	ZIMMERMAN,BAILEY	f	0-6	0-3	0-0	2	1	3	2	0	1	2	0	0	16			
01	NORTHCROSS-BAKER,RA		1-2	0-1	1-3	1	0	1	0	3	2	0	0	2	13			
04	SWENSON,KEIRYN		0-1	0-0	0-0	0	0	0	1	0	1	0	0	0	2			
13	SPANGLER,GRAYCE		0-0	0-0	0-0	0	0	0	0	0	0	0	0	0	0			
20	STOUT,SYDNEY		0-0	0-0	0-0	0	0	0	0	0	0	0	0	0	0			
24	THOMAS,TAYLAH		3-3	0-0	0-1	3	4	7	1	6	0	0	0	0	15			
30	WEAVER,MACY		0-0	0-0	0-0	0	0	0	0	0	0	0	0	0	0			
TEAM						0	1	1	0		0							
Totals			19-39	6-12	3-7	8	14	22	9	47	12	5	1	6	99			
FG %	3rd Qtr	7-18	38.9%	4th Qtr	12-21	57.1%	Half:	19-39	48.7%									
3FG %	3rd Qtr	1-4	25.0%	4th Qtr	5-8	62.5%	Half:	6-12	30.8%									
FT %	3rd Qtr	3-5	60.0%	4th Qtr	0-2	00.0%	Half:	3-7	42.9%									

Officials: Brian Hall, Luis Gonzalez, Katie Lukanich  
 Technical Fouls: Northeastern State Univ.- None. ARKANSAS- None.  
 EXHIBITION GAME

Score by periods	1st	2nd	3rd	4th	Total Points	In Paint	Off T/O	2nd Chance	Fast Break	Bench
Northeastern State Univ.	14	24	13	23	74 NESU	8	4	9	2	12
ARKANSAS	20	15	18	29	82	22	10	4	7	9

Last FG - NESU 4th-00:35, AR 4th-01:01.  
 NESU led for 8:02. AR led for 9:22. Game was tied for 2:36.

Score tied - 5 times  
 Lead changed - 3 times

**Northeastern State Univ. vs ARKANSAS**  
**11/2/2017; 7:02 p.m. at Fayetteville, Ark. (Bud Walton Arena)**  
**Period 3 Play-By-Play**



VISITORS: Northeastern State Univ.	Time	Score	Margin	HOME: ARKANSAS
TURNOVER by HAYES,CENIA	09:48			
	09:46			STEAL by MONK,MALICA
	09:43			MISSED LAYUP by MONK,MALICA
	09:43			REBOUND (OFF) by ZIMMERMAN,BAILEY
	09:40			MISSED JUMPER by ZIMMERMAN,BAILEY
	09:40			REBOUND (OFF) by MONK,MALICA
	09:36			MISSED 3PTR by COSPER,DEVIN
REBOUND (DEF) by ELDRED,BAILEE	09:36			
MISSED 3PTR by HAYES,CENIA	09:27			
	09:27			REBOUND (DEF) by WILLIAMS,KIARA
	09:18			MISSED 3PTR by ZIMMERMAN,BAILEY
	09:18			REBOUND (OFF) by ZIMMERMAN,BAILEY
	09:12			MISSED JUMPER by ZIMMERMAN,BAILEY
REBOUND (DEF) by HAYES,CENIA	09:12			
	09:05			FOUL by WILLIAMS,KIARA
GOOD! FT by BROOKS,TREE	09:05	35-39	V 4	
GOOD! FT by BROOKS,TREE	09:05	35-40	V 5	
	09:05			SUB IN: THOMAS,TAYLAH
	09:05			SUB OUT: WILLIAMS,KIARA
FOUL by GRIFFIN,MIRANDA	09:01			
	08:54			MISSED LAYUP by COSPER,DEVIN
REBOUND (DEF) by ELDRED,BAILEE	08:54			
MISSED 3PTR by STRANGE,DESTINY	08:24			
	08:24			REBOUND (DEF) by TEAM
	08:13	37-40	V 3	GOOD! LAYUP by MONK,MALICA [PNT]
MISSED JUMPER by ELDRED,BAILEE	07:52			
	07:52			REBOUND (DEF) by MASON,JAILYN
	07:43			MISSED 3PTR by ZIMMERMAN,BAILEY
REBOUND (DEF) by GRIFFIN,MIRANDA	07:43			
GOOD! JUMPER by STRANGE,DESTINY	07:27	37-42	V 5	
ASSIST by ELDRED,BAILEE	07:27			
FOUL by ELDRED,BAILEE	07:15			
	07:15	38-42	V 4	GOOD! FT by MONK,MALICA
	07:15			MISSED FT by MONK,MALICA
REBOUND (DEF) by BROOKS,TREE	07:15			
MISSED JUMPER by ELDRED,BAILEE	06:57			
REBOUND (OFF) by HAYES,CENIA	06:57			
MISSED 3PTR by HAYES,CENIA	06:52			
	06:52			REBOUND (DEF) by THOMAS,TAYLAH
FOUL by STRANGE,DESTINY	06:35			
SUB IN: LONG,CAITLYN	06:35			
SUB IN: HILL,ALEXIS	06:35			
SUB OUT: BROOKS,TREE	06:35			
SUB OUT: ELDRED,BAILEE	06:35			
	06:35			SUB IN: NORTHCROSS-BAKER,RA
	06:35			SUB OUT: MASON,JAILYN
	06:29	41-42	V 1	GOOD! 3PTR by COSPER,DEVIN
	06:29			ASSIST by MONK,MALICA
GOOD! LAYUP by GRIFFIN,MIRANDA [PNT]	06:03	41-44	V 3	
	05:52			MISSED LAYUP by COSPER,DEVIN
REBOUND (DEF) by GRIFFIN,MIRANDA	05:52			
MISSED JUMPER by STRANGE,DESTINY	05:32			
	05:32			REBOUND (DEF) by THOMAS,TAYLAH
	05:25			MISSED LAYUP by MONK,MALICA
REBOUND (DEF) by TEAM	05:25			
MISSED LAYUP by STRANGE,DESTINY	05:07			
	05:07			REBOUND (DEF) by MONK,MALICA
	04:57			TURNOVER by ZIMMERMAN,BAILEY
STEAL by HAYES,CENIA	04:56			
	04:52			FOUL by MONK,MALICA
TIMEOUT MEDIA	04:52			
GOOD! FT by HAYES,CENIA	04:52	41-45	V 4	
GOOD! FT by HAYES,CENIA	04:52	41-46	V 5	
SUB IN: HELLYER,MORGAN	04:52			
SUB IN: CUNNINGHAM,CAILEY	04:52			
SUB IN: BERTRAND,JOI	04:52			
SUB OUT: GRIFFIN,MIRANDA	04:52			
SUB OUT: HAYES,CENIA	04:52			
SUB OUT: STRANGE,DESTINY	04:52			

VISITORS: Northeastern State Univ.	Time	Score	Margin	HOME: ARKANSAS
	04:52			SUB IN: SWENSON,KEIRYN
	04:52			SUB OUT: COSPER,DEVIN
	04:31	43-46	V 3	GOOD! JUMPER by MONK,MALICA
	04:31			ASSIST by SWENSON,KEIRYN
TURNOVER by BERTRAND,JOI	04:00			
	03:43	45-46	V 1	GOOD! LAYUP by THOMAS,TAYLAH [PNT]
	03:43			ASSIST by NORTHCROSS-BAKER,RA
	03:25			FOUL by SWENSON,KEIRYN
MISSED 3PTR by HELLYER,MORGAN	03:17			
REBOUND (OFF) by CUNNINGHAM,CAILEY	03:17			
GOOD! LAYUP by LONG,CAITLYN [PNT]	03:05	45-48	V 3	
	02:54			MISSED LAYUP by SWENSON,KEIRYN
BLOCK by BERTRAND,JOI	02:54			
REBOUND (DEF) by LONG,CAITLYN	02:53			
MISSED JUMPER by BERTRAND,JOI	02:28			
REBOUND (OFF) by HELLYER,MORGAN	02:28			
	02:26			SUB IN: COSPER,DEVIN
	02:26			SUB OUT: SWENSON,KEIRYN
	02:19			FOUL by MONK,MALICA
MISSED FT by HILL,ALEXIS	02:19			
REBOUND (DEADB) by TEAM	02:19			
MISSED FT by HILL,ALEXIS	02:19			
	02:19			REBOUND (DEF) by THOMAS,TAYLAH
	02:19			SUB IN: MASON,JAILYN
	02:19			SUB OUT: MONK,MALICA
	02:07	47-48	V 1	GOOD! LAYUP by COSPER,DEVIN [PNT]
FOUL by LONG,CAITLYN	02:07			
	02:07	48-48	T	GOOD! FT by COSPER,DEVIN
TURNOVER by HELLYER,MORGAN	01:44			
	01:43			STEAL by NORTHCROSS-BAKER,RA
FOUL by BERTRAND,JOI	01:38			
	01:38	49-48	H 1	GOOD! FT by NORTHCROSS-BAKER,RA
	01:38			MISSED FT by NORTHCROSS-BAKER,RA
	01:38			REBOUND (OFF) by THOMAS,TAYLAH
SUB IN: STRANGE,DESTINY	01:38			
SUB IN: BROOKS,TREE	01:38			
SUB IN: HAYES,CENIA	01:38			
SUB IN: GRIFFIN,MIRANDA	01:38			
SUB IN: ELDRED,BAILEE	01:38			
SUB OUT: HELLYER,MORGAN	01:38			
SUB OUT: CUNNINGHAM,CAILEY	01:38			
SUB OUT: LONG,CAITLYN	01:38			
SUB OUT: HILL,ALEXIS	01:38			
SUB OUT: BERTRAND,JOI	01:38			
	01:27			MISSED LAYUP by ZIMMERMAN,BAILEY
	01:27			REBOUND (OFF) by THOMAS,TAYLAH
	01:24	51-48	H 3	GOOD! LAYUP by THOMAS,TAYLAH [PNT]
GOOD! 3PTR by HAYES,CENIA	01:04	51-51	T	
	00:47			SUB IN: MONK,MALICA
	00:47			SUB OUT: COSPER,DEVIN
	00:38			TURNOVER by MONK,MALICA
STEAL by ELDRED,BAILEE	00:38			
MISSED 3PTR by GRIFFIN,MIRANDA	00:22			
	00:22			REBOUND (DEF) by MASON,JAILYN
	00:11	53-51	H 2	GOOD! LAYUP by MONK,MALICA [PNT]

Northeastern State Univ. 74, ARKANSAS 82

Period 3-only	In Paint	Off T/O	2nd Chance	Fast Break	Bench	
NESU	4	2	2	0	2	Score tied - 2 times
AR	10	5	2	0	5	Lead changed - 0 times

**Northeastern State Univ. vs ARKANSAS**  
**11/2/2017; 7:02 p.m. at Fayetteville, Ark. (Bud Walton Arena)**  
**Period 4 Play-By-Play**



VISITORS: Northeastern State Univ.	Time	Score	Margin	HOME: ARKANSAS
SUB IN: BLEVINS,LAURYN	10:00			
SUB OUT: STRANGE,DESTINY	10:00			
	10:00			SUB IN: THOMAS,TAYLAH
	10:00			SUB IN: NORTHCROSS-BAKER,RA
	10:00			SUB OUT: WILLIAMS,KIARA
	10:00			SUB OUT: COSPER,DEVIN
	09:46	55-51	H 4	GOOD! LAYUP by MASON,JAILYN [PNT]
MISSED JUMPER by BLEVINS,LAURYN	09:24			
REBOUND (OFF) by TEAM	09:24			
GOOD! JUMPER by ELDRED,BAILEE [PNT]	09:18	55-53	H 2	
	09:04	57-53	H 4	GOOD! JUMPER by MASON,JAILYN [PNT]
	08:55			FOUL by MONK,MALICA
MISSED FT by BROOKS,TREE	08:55			
REBOUND (DEADB) by TEAM	08:55			
GOOD! FT by BROOKS,TREE	08:55	57-54	H 3	
SUB IN: LONG,CAITLYN	08:55			
SUB OUT: HAYES,CENIA	08:55			
	08:45	59-54	H 5	GOOD! LAYUP by THOMAS,TAYLAH [PNT]
FOUL by BROOKS,TREE	08:45			
	08:45			ASSIST by MASON,JAILYN
	08:45			MISSED FT by THOMAS,TAYLAH
REBOUND (DEF) by GRIFFIN,MIRANDA	08:45			
MISSED JUMPER by BROOKS,TREE	08:38			
	08:38			REBOUND (DEF) by MASON,JAILYN
	08:30			TURNOVER by MASON,JAILYN
STEAL by BLEVINS,LAURYN	08:30			
MISSED 3PTR by GRIFFIN,MIRANDA	08:23			
	08:23			REBOUND (DEF) by THOMAS,TAYLAH
	08:13			MISSED 3PTR by ZIMMERMAN,BAILEY
REBOUND (DEF) by LONG,CAITLYN	08:13			
GOOD! 3PTR by BLEVINS,LAURYN	07:52	59-57	H 2	
ASSIST by GRIFFIN,MIRANDA	07:52			
	07:29			FOUL by ZIMMERMAN,BAILEY
	07:29			TURNOVER by ZIMMERMAN,BAILEY
SUB IN: HILL,ALEXIS	07:29			
SUB OUT: BROOKS,TREE	07:29			
	07:29			SUB IN: COSPER,DEVIN
	07:29			SUB IN: WILLIAMS,KIARA
	07:29			SUB OUT: THOMAS,TAYLAH
	07:29			SUB OUT: ZIMMERMAN,BAILEY
MISSED JUMPER by BLEVINS,LAURYN	07:18			
REBOUND (OFF) by BLEVINS,LAURYN	07:18			
MISSED LAYUP by LONG,CAITLYN	07:14			
	07:14			BLOCK by MASON,JAILYN
REBOUND (OFF) by LONG,CAITLYN	07:13			
	07:13			FOUL by MASON,JAILYN
GOOD! FT by LONG,CAITLYN	07:13	59-58	H 1	
GOOD! FT by LONG,CAITLYN	07:13	59-59	T	
	07:00			MISSED JUMPER by COSPER,DEVIN
REBOUND (DEF) by BLEVINS,LAURYN	07:00			
GOOD! 3PTR by GRIFFIN,MIRANDA	06:44	59-62	V 3	
ASSIST by ELDRED,BAILEE	06:44			
	06:35	62-62	T	GOOD! 3PTR by COSPER,DEVIN
	06:35			ASSIST by MONK,MALICA
MISSED 3PTR by HILL,ALEXIS	06:12			
	06:12			REBOUND (DEF) by MASON,JAILYN
	06:02			MISSED 3PTR by NORTHCROSS-BAKER,RA
	06:02			REBOUND (OFF) by NORTHCROSS-BAKER,RA
	06:00	64-62	H 2	GOOD! LAYUP by NORTHCROSS-BAKER,RA [PNT]
FOUL by HILL,ALEXIS	06:00			
	06:00			MISSED FT by NORTHCROSS-BAKER,RA
	06:00			REBOUND (OFF) by THOMAS,TAYLAH
SUB IN: BROOKS,TREE	06:00			
SUB OUT: HILL,ALEXIS	06:00			
	06:00			SUB IN: THOMAS,TAYLAH
	06:00			SUB OUT: WILLIAMS,KIARA
	05:54			MISSED JUMPER by MASON,JAILYN
REBOUND (DEF) by LONG,CAITLYN	05:54			
	05:41			FOUL by THOMAS,TAYLAH

VISITORS: Northeastern State Univ.	Time	Score	Margin	HOME: ARKANSAS
GOOD! FT by BLEVINS,LAURYN	05:41	64-63	H 1	
GOOD! FT by BLEVINS,LAURYN	05:41	64-64	T	
	05:31	67-64	H 3	GOOD! 3PTR by COSPER,DEVIN
	05:31			ASSIST by MONK,MALICA
MISSED 3PTR by BROOKS,TREE	05:12			
	05:12			REBOUND (DEF) by MASON,JAILYN
	05:04	69-64	H 5	GOOD! LAYUP by COSPER,DEVIN [FB/PNT]
	05:04			ASSIST by MASON,JAILYN
GOOD! 3PTR by LONG,CAITLYN	04:46	69-67	H 2	
ASSIST by GRIFFIN,MIRANDA	04:46			
	04:36			MISSED LAYUP by MONK,MALICA
REBOUND (DEF) by BLEVINS,LAURYN	04:36			
MISSED LAYUP by BLEVINS,LAURYN	04:14			
REBOUND (OFF) by BLEVINS,LAURYN	04:14			
TURNOVER by BLEVINS,LAURYN	04:11			
	04:10			STEAL by MONK,MALICA
	04:03			TURNOVER by COSPER,DEVIN
STEAL by ELDRED,BAILEE	04:01			
TURNOVER by ELDRED,BAILEE	03:59			
	03:58			STEAL by NORTHCROSS-BAKER,RA
	03:50	72-67	H 5	GOOD! 3PTR by COSPER,DEVIN
	03:50			ASSIST by NORTHCROSS-BAKER,RA
TIMEOUT 30SEC	03:49			
SUB IN: STRANGE,DESTINY	03:49			
SUB OUT: ELDRED,BAILEE	03:49			
	03:49			SUB IN: ZIMMERMAN,BAILEY
	03:49			SUB IN: WILLIAMS,KIARA
	03:49			SUB OUT: NORTHCROSS-BAKER,RA
	03:49			SUB OUT: THOMAS,TAYLAH
TURNOVER by BROOKS,TREE	03:22			
	03:20			STEAL by COSPER,DEVIN
	03:19			TIMEOUT media
	03:07			MISSED 3PTR by MASON,JAILYN
REBOUND (DEF) by STRANGE,DESTINY	03:07			
TURNOVER by BLEVINS,LAURYN	02:55			
	02:55			STEAL by MONK,MALICA
	02:51	74-67	H 7	GOOD! LAYUP by COSPER,DEVIN [FB/PNT]
	02:51			ASSIST by MONK,MALICA
GOOD! JUMPER by STRANGE,DESTINY	02:35	74-69	H 5	
FOUL by BLEVINS,LAURYN	02:21			
	02:06	76-69	H 7	GOOD! JUMPER by MASON,JAILYN
	02:06			ASSIST by MONK,MALICA
GOOD! LAYUP by BROOKS,TREE [FB/PNT]	01:58	76-71	H 5	
	01:44			MISSED JUMPER by MONK,MALICA
REBOUND (DEF) by TEAM	01:44			
SUB IN: HILL,ALEXIS	01:42			
SUB OUT: BROOKS,TREE	01:42			
MISSED 3PTR by BLEVINS,LAURYN	01:36			
REBOUND (OFF) by GRIFFIN,MIRANDA	01:36			
	01:34			FOUL by ZIMMERMAN,BAILEY
MISSED FT by GRIFFIN,MIRANDA	01:34			
REBOUND (DEADB) by TEAM	01:34			
MISSED FT by GRIFFIN,MIRANDA	01:34			
	01:34			REBOUND (DEADB) by TEAM
FOUL by STRANGE,DESTINY	01:34			
	01:34			SUB IN: THOMAS,TAYLAH
	01:34			SUB OUT: WILLIAMS,KIARA
	01:24	79-71	H 8	GOOD! 3PTR by MASON,JAILYN
	01:24			ASSIST by COSPER,DEVIN
MISSED 3PTR by GRIFFIN,MIRANDA	01:09			
	01:09			REBOUND (DEF) by ZIMMERMAN,BAILEY
	01:01	82-71	H 11	GOOD! 3PTR by COSPER,DEVIN [FB]
	01:01			ASSIST by ZIMMERMAN,BAILEY
MISSED JUMPER by STRANGE,DESTINY	00:43			
REBOUND (OFF) by LONG,CAITLYN	00:43			
GOOD! 3PTR by GRIFFIN,MIRANDA	00:35	82-74	H 8	
ASSIST by LONG,CAITLYN	00:35			
	00:35			TIMEOUT 30SEC
	00:35			SUB IN: WILLIAMS,KIARA
	00:35			SUB OUT: THOMAS,TAYLAH
	00:11			MISSED JUMPER by COSPER,DEVIN
BLOCK by BLEVINS,LAURYN	00:11			
	00:09			REBOUND (OFF) by COSPER,DEVIN
	00:07			MISSED JUMPER by COSPER,DEVIN
REBOUND (DEF) by LONG,CAITLYN	00:07			

<b>VISITORS: Northeastern State Univ.</b>	<b>Time</b>	<b>Score</b>	<b>Margin</b>	<b>HOME: ARKANSAS</b>
TIMEOUT 30SEC	00:06			
SUB IN: HAYES,CENIA	00:06			
SUB OUT: HILL,ALEXIS	00:06			
	00:06			SUB IN: THOMAS,TAYLAH
	00:06			SUB OUT: WILLIAMS,KIARA
MISSED 3PTR by GRIFFIN,MIRANDA	00:03			
	00:03			REBOUND (DEF) by MONK,MALICA

Northeastern State Univ. 74, ARKANSAS 82

<b>Period 4-only</b>	<b>In Paint</b>	<b>Off T/O</b>	<b>2nd Chance</b>	<b>Fast Break</b>	<b>Bench</b>	
NESU	4	2	7	2	10	Score tied - 4 times
AR	12	5	2	7	4	Lead changed - 2 times

**Northeastern State Univ. vs ARKANSAS**  
**11/2/2017; 7:02 p.m. at Fayetteville, Ark. (Bud Walton Arena)**  
**Scoring/Runs Reference**



**Period 1**

Northeastern State Univ.	VRun	Score	Margin	HRun	ARKANSAS
		0-2	2		WILLIAMS LAYUP [P] - 08:22
07:35 - BLEVINS JUMPER [P]	-	2-2	0		
06:39 - BLEVINS JUMPER	4-0	4-2	-2		
		4-3	-1		MONK FT - 06:20
		4-4	0	2-0	MONK FT - 06:20
		4-6	2	4-0	COSPER LAYUP [P] [F] - 05:59
		4-7	3	5-0	COSPER FT - 05:59
		4-8	4	6-0	COSPER FT - 05:35
		4-11	7	9-0	NORTHCROSS-BAKER 3PTR [F] - 05:04
		4-14	10	12-0	NORTHCROSS-BAKER 3PTR - 04:27
04:10 - ELDRED FT	-	5-14	9		
04:10 - ELDRED FT	2-0	6-14	8		
		6-15	9		NORTHCROSS-BAKER FT - 04:02
		6-16	10	2-0	NORTHCROSS-BAKER FT - 04:02
		6-19	13	5-0	NORTHCROSS-BAKER 3PTR - 03:09
02:20 - HELLYER 3PTR	-	9-19	10		
01:57 - ELDRED 3PTR	6-0	12-19	7		
00:41 - BLEVINS JUMPER	8-0	14-19	5		
		14-20	6		NORTHCROSS-BAKER FT - 00:14



**Northeastern State Univ. vs ARKANSAS**  
**11/2/2017; 7:02 p.m. at Fayetteville, Ark. (Bud Walton Arena)**  
**Scoring/Runs Reference**



**Period 2**

Northeastern State Univ.	VRun	Score	Margin	HRun	ARKANSAS
08:14 - LONG LAYUP [P]	-	16-20	4		
		16-23	7		COSPER 3PTR - 08:04
07:32 - BROOKS 3PTR	-	19-23	4		
		19-24	5		WILLIAMS FT - 06:39
		19-25	6	2-0	MONK FT - 05:42
		19-27	8	4-0	WILLIAMS LAYUP [P] - 05:41
05:16 - BERTRAND FT	-	20-27	7		
05:16 - BERTRAND FT	2-0	21-27	6		
		21-29	8		MONK LAYUP [P] - 05:03
		21-31	10	4-0	COSPER JUMPER - 04:22
03:31 - GRIFFIN 3PTR	-	24-31	7		
03:06 - HAYES 3PTR	6-0	27-31	4		
02:22 - HILL 3PTR	9-0	30-31	1		
		30-32	2		NORTHCROSS-BAKER FT - 02:11
		30-33	3	2-0	NORTHCROSS-BAKER FT - 02:11
02:00 - GRIFFIN 3PTR	-	33-33	0		
01:20 - STRANGE LAYUP [P]	5-0	35-33	-2		
		35-34	-1		MONK FT - 01:13
		35-35	0	2-0	MONK FT - 01:13
00:45 - GRIFFIN 3PTR	-	38-35	-3		

**Northeastern State Univ. vs ARKANSAS**  
**11/2/2017; 7:02 p.m. at Fayetteville, Ark. (Bud Walton Arena)**  
**Scoring/Runs Reference**



**Period 3**

Northeastern State Univ.	VRun	Score	Margin	HRun	ARKANSAS
09:05 - BROOKS FT	-	39-35	-4		
09:05 - BROOKS FT	NaN-0	40-35	-5		
		40-37	-3		MONK LAYUP [P] - 08:13
07:27 - STRANGE JUMPER	-	42-37	-5		
		42-38	-4		MONK FT - 07:15
		42-41	-1	4-0	COSPER 3PTR - 06:29
06:03 - GRIFFIN LAYUP [P]	-	44-41	-3		
04:52 - HAYES FT	3-0	45-41	-4		
04:52 - HAYES FT	4-0	46-41	-5		
		46-43	-3		MONK JUMPER - 04:31
		46-45	-1	4-0	THOMAS LAYUP [P] - 03:43
03:05 - LONG LAYUP [P]	-	48-45	-3		
		48-47	-1		COSPER LAYUP [P] - 02:07
		48-48	0	3-0	COSPER FT - 02:07
		48-49	1	4-0	NORTHCROSS-BAKER FT - 01:38
		48-51	3	6-0	THOMAS LAYUP [P] - 01:24
01:04 - HAYES 3PTR	-	51-51	0		
		51-53	2		MONK LAYUP [P] - 00:11

**Northeastern State Univ. vs ARKANSAS**  
**11/2/2017; 7:02 p.m. at Fayetteville, Ark. (Bud Walton Arena)**  
**Scoring/Runs Reference**

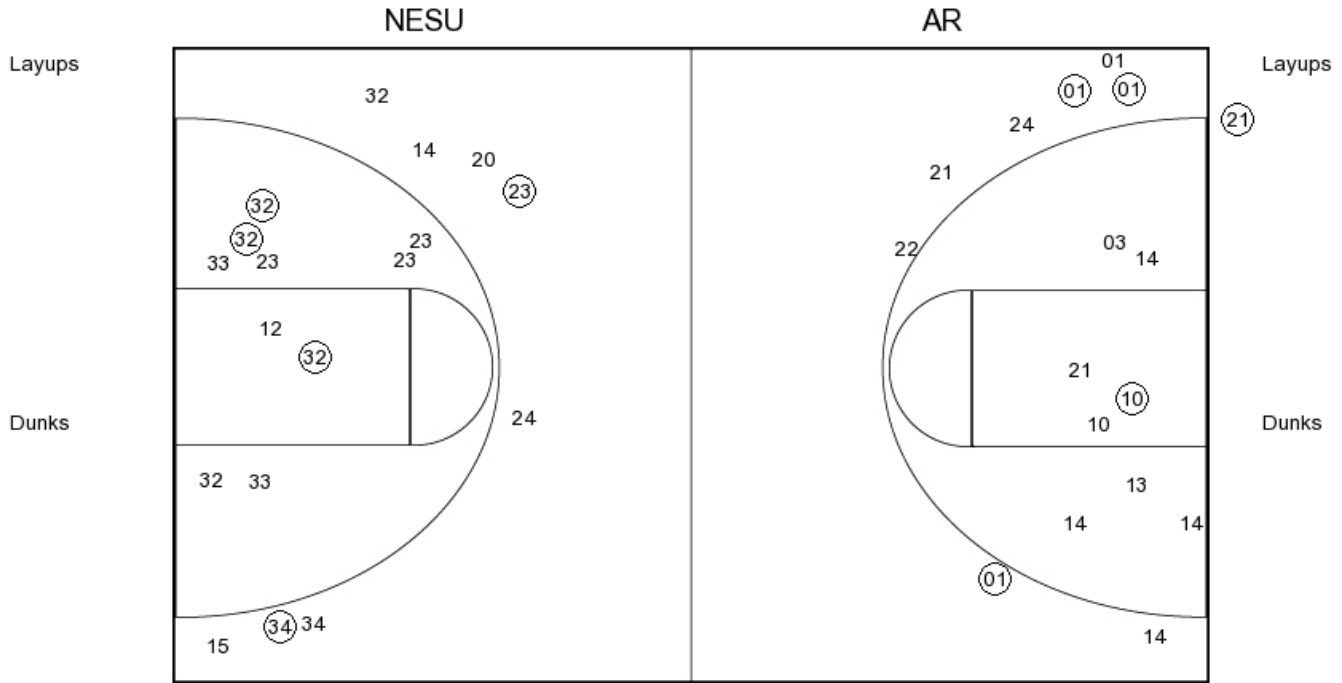


**Period 4**

Northeastern State Univ.	VRUN	Score	Margin	HRun	ARKANSAS
		51-55	4		MASON LAYUP [P] - 09:46
09:18 - ELDRED JUMPER [P]	-	53-55	2		
		53-57	4		MASON JUMPER [P] - 09:04
08:55 - BROOKS FT	-	54-57	3		
		54-59	5		THOMAS LAYUP [P] - 08:45
07:52 - BLEVINS 3PTR	-	57-59	2		
07:13 - LONG FT	4-0	58-59	1		
07:13 - LONG FT	5-0	59-59	0		
06:44 - GRIFFIN 3PTR	8-0	62-59	-3		
		62-62	0		COSPER 3PTR - 06:35
		62-64	2	5-0	NORTHCROSS-BAKER LAYUP [P] - 06:00
05:41 - BLEVINS FT	-	63-64	1		
05:41 - BLEVINS FT	2-0	64-64	0		
		64-67	3		COSPER 3PTR - 05:31
		64-69	5	5-0	COSPER LAYUP [P] [F] - 05:04
04:46 - LONG 3PTR	-	67-69	2		
		67-72	5		COSPER 3PTR - 03:50
		67-74	7	5-0	COSPER LAYUP [P] [F] - 02:51
02:35 - STRANGE JUMPER	-	69-74	5		
		69-76	7		MASON JUMPER - 02:06
01:58 - BROOKS LAYUP [P] [F]	-	71-76	5		
		71-79	8		MASON 3PTR - 01:24
		71-82	11	6-0	COSPER 3PTR [F] - 01:01
00:35 - GRIFFIN 3PTR	-	74-82	8		



**PERIOD 1**



**NESU PERIOD 1**

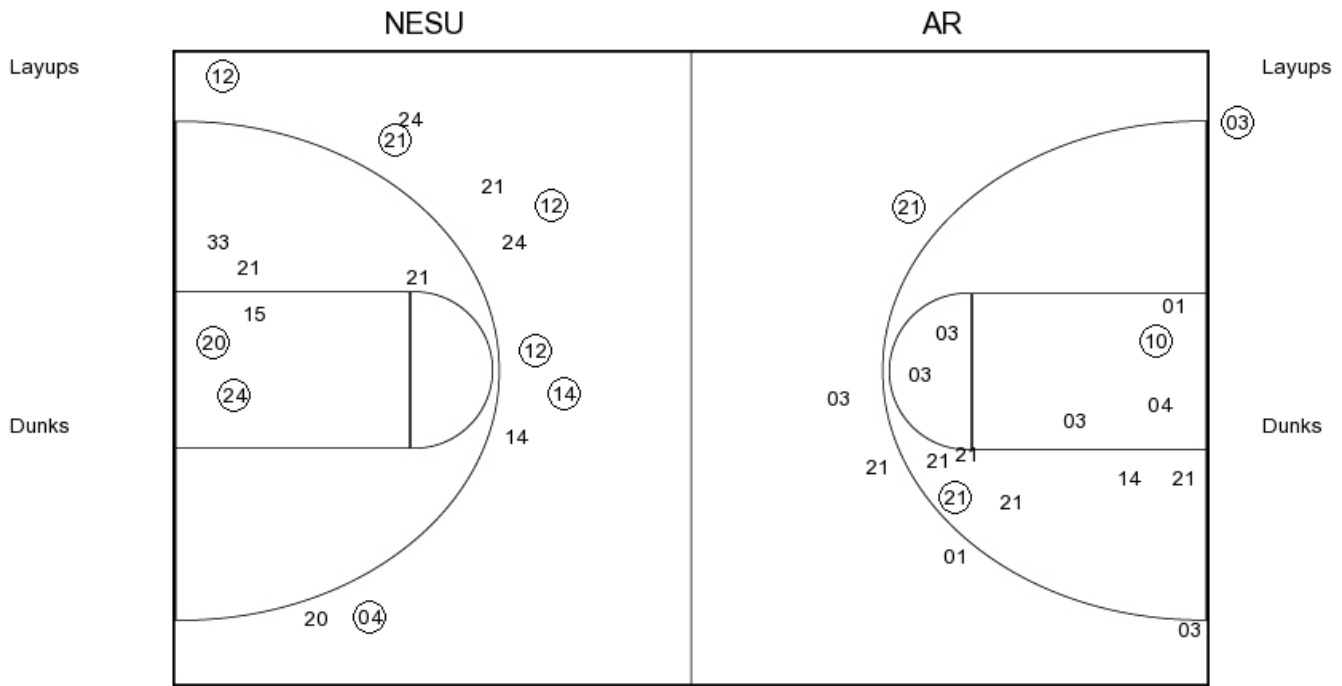
FG Made	13
FG Attempted	35
3PFG Made	8
3PFG Attempted	19

**AR PERIOD 1**

FG Made	9
FG Attempted	35
3PFG Made	4
3PFG Attempted	13



**PERIOD 2**



**NESU PERIOD 2**

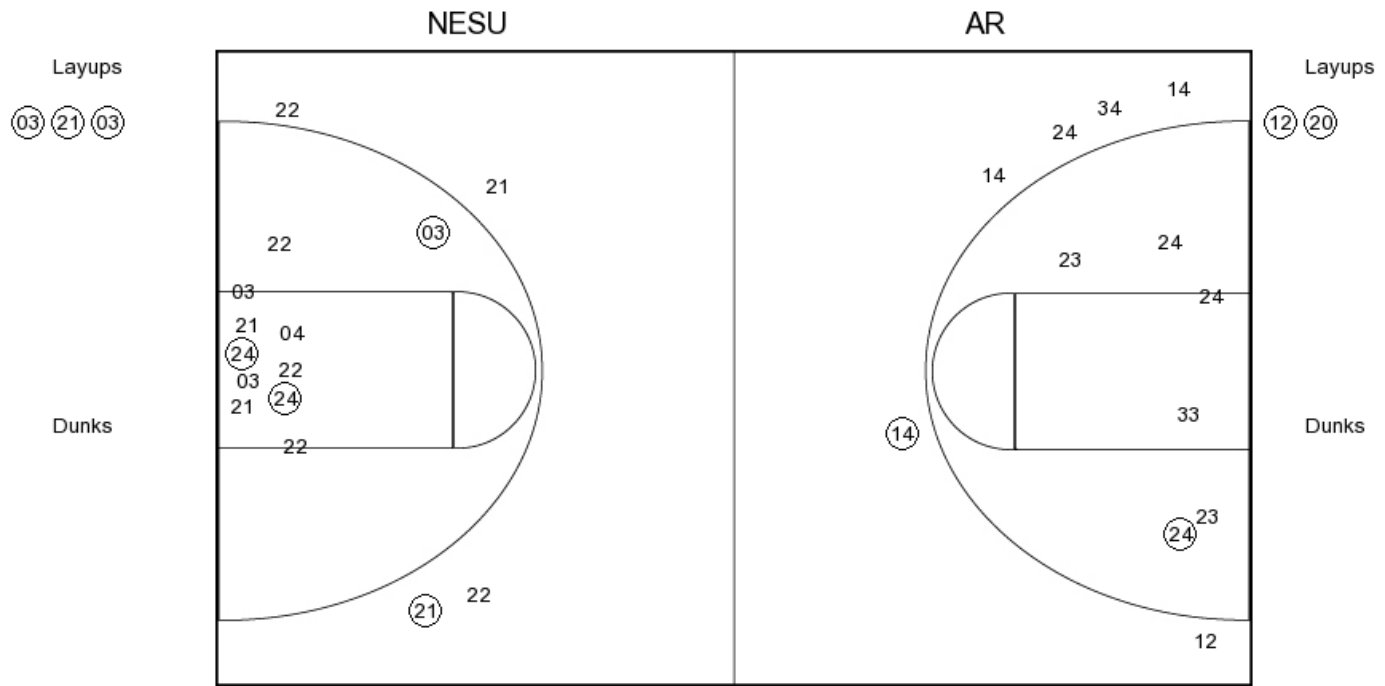
FG Made  
 FG Attempted  
 3PFG Made  
 3PFG Attempted

**AR PERIOD 2**

FG Made  
 FG Attempted  
 3PFG Made  
 3PFG Attempted



**PERIOD 3**



**NESU PERIOD 3**

FG Made	11
FG Attempted	33
3PFG Made	5
3PFG Attempted	16

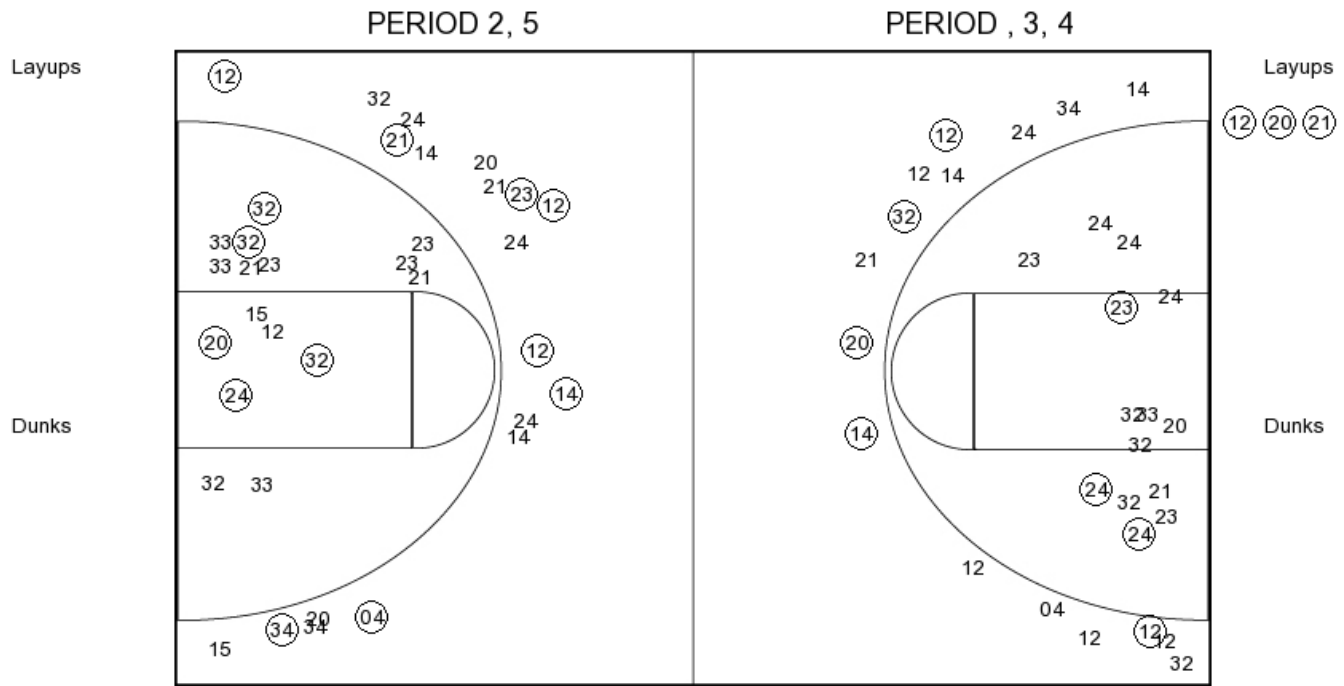
**AR PERIOD 3**

FG Made	19
FG Attempted	39
3PFG Made	6
3PFG Attempted	12





Northeastern State Univ.



**NESU PERIOD 1**

FG Made	13
FG Attempted	35
3PFG Made	8
3PFG Attempted	19

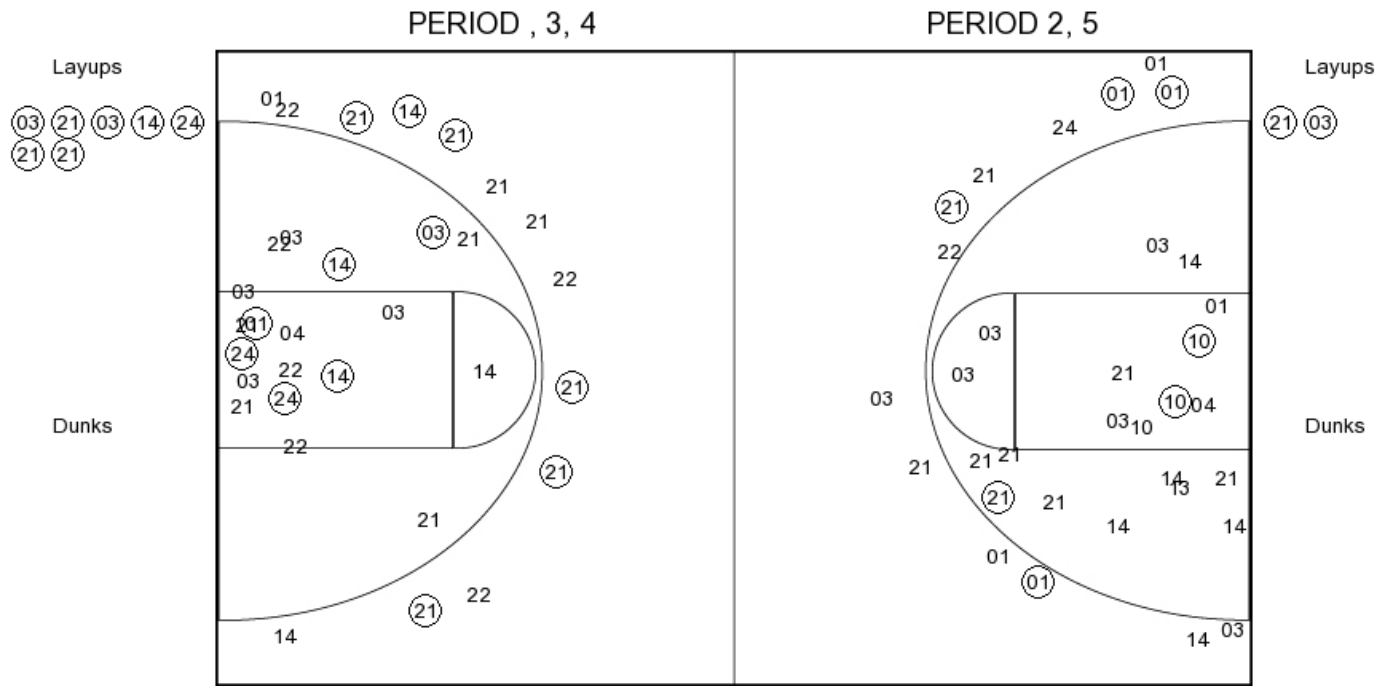
**NESU PERIOD 2**

FG Made	
FG Attempted	
3PFG Made	
3PFG Attempted	





**ARKANSAS**



**AR PERIOD 1**

FG Made	9
FG Attempted	35
3PFG Made	4
3PFG Attempted	13

**AR PERIOD 2**

FG Made	
FG Attempted	
3PFG Made	
3PFG Attempted	