

RAZORBACK Softball

7 NCAA Tournaments | 17 NFCA All-Region Selections | 26 All-SEC Selections

2018 SCHEDULE/RESULTS

OVERALL: 37-11 | SEC: 12-9
H: 21-2 | A: 4-8 | N: 9-1

DATE	OPPONENT	TIME/RESULT
F9	vs Kennesaw State!	Cancelled
F9	vs Nicholls!	Cancelled
F10	vs Nicholls!	Cancelled
F10	at Southeastern Louisiana! [CST]	Cancelled
F17	vs Grand Canyon#	W, 6-2
F17	vs 21 Utah#	W, 4-2
F18	vs Weber State#	W, 5-2
F18	vs Loyola Marymount#	W, 6-5
F19	vs Fordham#	W, 4-2
F23	vs Marist%	W, 15-3 (6)
F23	vs Manhattan%	W, 9-1 (6)
F24	vs Delaware%	W, 10-1 (5)
F24	vs Villanova%	W, 9-0 (5)
F25	vs McNeese%	L, 5-6
F28	Missouri State [SECN+]	W, 9-0 (5)
M2	Dartmouth^	W, 12-3 (5)
M2	Northern Colorado^	W, 9-0 (6)
M3	Dartmouth^ [SECN+]	W, 2-1
M3	Central Connecticut State^ [SECN+]	W, 7-0
M4	Northern Colorado^ [SECN+]	W, 1-0
M4	Central Connecticut State^ [SECN+]	W, 6-5
M6	at Wichita State (G1)	L, 0-1
M6	at Wichita State (G2)	Cancelled
M10	at #11 Georgia* [SEC Network]	L, 0-8 (5)
M12	at #11 Georgia* [ESPN]	L, 0-1 (9)
M12	at #11 Georgia* [SEC Network]	L, 4-5
M16	Iowa State&	W, 8-3
M16	Saint Francis (Pa.)&	W, 8-3
M17	Omaha& [SECN+]	W, 3-1
M17	Saint Francis (Pa.)& [SECN+]	W, 4-3
M18	Omaha& [SECN+]	W, 4-0
M20	UT Arlington (G1) [SECN+]	W, 6-0
M20	UT Arlington (G2) [SECN+]	W, 10-6
M23	Missouri* [SECN+]	W, 3-1
M24	Missouri* [SECN+]	L, 0-3
M25	Missouri* [SECN+]	W, 10-7
M30	#20 Mississippi State* [SECN+]	W, 3-2
M31	#20 Mississippi State* [SECN+]	W, 6-0
A1	#20 Mississippi State* [SECN+]	W, 8-2
A6	at #12 South Carolina* [SECN+]	L, 1-2
A8	at #12 South Carolina* [SECN+]	W, 4-0
A8	at #12 South Carolina* [SECN+]	L, 2-6
A10	at Saint Louis (G1)	W, 7-0
A10	at Saint Louis (G2)	W, 5-0
A13	#15 Alabama* [SECN+]	L, 5-6
A14	#15 Alabama* [ESPN]	W, 3-0
A15	#15 Alabama* [SECN+]	W, 6-3
A20	at #11 Auburn* [SECN+]	L, 1-11 (5)
A22	at #11 Auburn* [SECN+]	W, 4-2 (10)
A22	at #11 Auburn* [SECN+]	L, 2-4
A28	Ole Miss* [SEC Network]	W, 3-0
A29	Ole Miss* [ESPN]	W, 8-3
A30	Ole Miss* [SEC Network]	W, 7-1
M4	at LSU* [SEC Network/Bases Loaded]	6:30 p.m.
M5	at LSU* [SECN+]	6 p.m.
M6	at LSU* [ESPN]	3 p.m.
M9-12	SEC Tournament	TBA
M18-20	NCAA Regionals	TBA
M24-27	NCAA Super Regionals	TBA
M31-J6	Women's College World Series	TBA

! Lion Classic | #Mary Nutter Collegiate Classic
% Madeira Beach Spring Invitational | ^ Razorback Invitational
& Wooo Pig Classic | * SEC games

All home games played at Bogle Park (1,200)
All times central & subject to change



UP NEXT

Regular-Season Finale

May 4-6, 2018
Tiger Park (Baton Rouge, La.)

BROADCAST INFORMATION

TV: ESPN (Sun)
Web: WatchESPN
Live Stats: ArkansasRazorbacks.com

NEXT THREE OPPONENTS



#11 AUBURN TIGERS

Record: 38-14/11-12 SEC
Series: Auburn, 38-25
Last Meeting: L, 2-4 (4/22/18)



OLE MISS REBELS

Record: 28-21/5-16 SEC
Series: Arkansas, 34-28
Last Meeting: W, 7-1 (4/30/18)



#13 LSU TIGERS

Record: 37-13/10-10 SEC
Series: LSU, 56-9
Last Meeting: L, 1-9 (5/1/16)



WHERE CAN I FIND...

Quick Facts/Roster	2
Milestone Watch/What Happens When...	3
Bogle Park/The SEC	4
Head Coach Courtney Deifel	5
Career Top 10	6
Statistics & Starters	7-11
The Hitters & Pitchers	12-15
TV/Headshot Roster	16

HEAD TO HEAD

ARKANSAS		LSU
.288	Batting Avg.	.258
5.29	Runs/Game	3.94
50	Home Runs	31
141	Walks	175
17	Stolen Bases	59
.964	Fielding Pct.	.973
2.05	ERA	1.45
325	Strikeouts	337



Hannah McEwen

ALL-TIME SERIES VS LSU

Friday's opener will be the 66th meeting in the series and the 30th game played in Baton Rouge. The Razorbacks are looking for their first win in the series since 2013 and first on the road since 2005. This weekend's series will be the first with both teams ranked inside the top 20.

LAST TIME OUT

Arkansas completed its second SEC sweep of the year with a 7-1 win over Ole Miss. The Razorbacks scored four in the fifth inning to break the game open. The win clinched the program's first sweep of Ole Miss since the 2001 season.

RANKINGS WATCH

The Razorbacks are up one spot to a program-best No. 15 in this week's ESPN.com/USA Softball poll while remaining at No. 16 in the USA Today/NFCA rankings. The team sits at No. 18 in the RPI for the second-straight week.

A LOOK AT THE STAT SHEET

The Razorbacks carry top-50 national marks in strikeout to walk ratio (seventh/5.08), home runs (T23/50), team ERA (27/2.05), slugging percentage (31/.467) and runs per game (T48/5.29).

THAT'S A RECORD

With a sixth-inning single against Ole Miss (April 30), Hannah McEwen broke the program's single-season RBI record and enters the weekend with 51 RBI. She sits fourth in the SEC and tied for 26th in the NCAA in RBI. After hitting .636 with two home runs, seven RBI and four runs against Ole Miss, McEwen was named the SEC Freshman of the Week.

AN EYE ON 200

Freshman Mary Haff became the fourth Arkansas pitcher to register 200 strikeouts in a season with six strikeouts in the series opener against Ole Miss (April 28). She is second in the SEC and tied for 18th nationally with 211 strikeouts.

BE AT BOGLE

The Razorbacks beat Ole Miss (April 28) in front of a record crowd of 3,448 fans at Bogle Park. Game two of the series was played in front of 1,401 fans which stands as the No. 6 home-attendance figure in program history.

ONE-HIT WONDER

Freshman Mary Haff's complete-game performance versus Ole Miss (April 28) doubled as her sixth one-hit effort of the season, and second in SEC play. The game also marked her ninth complete-game shutout of the year.

2018 TEAM QUICK FACTS

TEAM INFORMATION

2017 Overall Record _____ 31-24
 2017 SEC Record _____ 7-17
 NCAA Postseason _____ NCAA Regional (Norman)
 SEC Finish _____ 12th
 Home Record _____ 13-8
 Away Record _____ 9-14
 Neutral Record _____ 9-2
 Letterwinners Returning/Lost _____ 18/11
 Starters Returning/Lost _____ 9/5
 Newcomers _____ 6

COACHING STAFF

Head Coach _____ Courtney Deifel (Third Season)
 Record at Arkansas _____ 85-74 (.535)
 Career Record _____ 112-101 (.522)
 Assistant Coach _____ Yolanda McRae (Third Season)
 Assistant Coach _____ Matt Meuchel (Second Season)
 Volunteer Assistant _____ Jordan McElroy (Third Season)
 Director of Operations _____ Paige Williams (Third Season)

TEAM HISTORY

First Year of Program _____ 1997
 All-Time Record _____ 608-708-1 (.461)
 All-Time SEC Record _____ 199-400 (.329)
 SEC Championships/Last _____ None
 NCAA Appearances/Last _____ Seven/2017

UNIVERSITY INFORMATION

Location _____ Fayetteville, Ark.
 Founded _____ March 27, 1871
 Enrollment _____ 27,558
 Nickname _____ Razorbacks
 School Colors _____ Cardinal and White
 Affiliation _____ NCAA Division I
 Conference _____ Southeastern (SEC)
 Chancellor _____ Dr. Joseph E. Steinmetz
 Vice Chancellor/Director of Athletics _____ Hunter Yurachek
 Faculty Athletic Representative _____ Gerald Jordan
 University Website _____ www.uark.edu
 Athletics Website _____ ArkansasRazorbacks.com

COMMUNICATIONS

Asst AD for Communications _____ Kyle Parkinson
 Associate Director _____ David Beall
 Associate Director _____ Jeri Thorpe
 Assistant Director _____ Brandon Langlois
 Assistant Director (SB Contact) _____ Zach Lawson
 Email _____ zlawson@uark.edu
 Office# _____ 479-575-7089
 Cell# _____ 479-595-2358
 Assistant Director _____ Jeff Smith
 Assistant Director _____ John Thomas
 Intern _____ Devan Lawson
 Digital Strategist _____ Taylor McGillis
 Graphic Designer _____ Trent Daniel
 Assistant Graphic Designer _____ AJ Enloe
 Secretary _____ Mary Lynn Gibson

Mailing Address
 Razorback Communications
 PO Box 7777
 Fayetteville, AR 72702-7777

Overnight Address
 Razorback Communications
 1240 W. Leroy Pond Dr.
 Fayetteville, AR 72701



#	NAME	POSITION	CLASS/EXP	B/T	HEIGHT	HOMETOWN/PREVIOUS
00	Carley Haizlip	OF	Jr./2L	L/R	5-8	Midlothian, Texas/Midlothian
2	A.J. Belans	INF	Sr./1L	R/R	5-5	Hollywood, Fla./FIU
4	Mary Haff	RHP	Fr./HS	R/R	5-10	Winter Haven, Fla./Lake Region HS
6	Tori Cooper	OF	Sr./3L	L/L	5-5	Nederland, Texas/Nederland
7	Sydney Parr	OF	Soph./1L	L/R	5-7	North Little Rock, Ark./North Little Rock
8	Autumn Buczek	INF	Sr./3L	L/R	5-7	Greenbrier, Ark./Greenbrier
9	Autumn Storms	RHP	Soph./1L	R/R	5-10	Temecula, Calif./Great Oak HS
10	Haydi Bugarin	OF	Jr./2L	R/R	5-3	San Antonio, Texas/East Central HS
12	Loren Krzysko	OF	R-Sr./3L	R/R	5-3	Barrington, Ill./Barrington
13	Kayla Green	C	Fr./HS	R/R	5-9	Temecula, Calif./Great Oak HS
16	Keely Edwards	INF	Soph./1L	R/R	5-6	Harrisburg, Ark./Harrisburg
18	Ashley Diaz	INF	Jr./2L	R/R	5-10	South El Monte, Calif./South El Monte
19	Lauren Archuleta	C	R-Jr./2L	R/R	5-8	Rockwall, Texas/Rockwall
20	Macy Brotherton	C	Soph./1L	R/R	5-9	Mena, Ark./Mena
22	Linnie Malkin	INF	Fr./HS	R/R	5-11	Broomfield, Colo./Broomfield
23	Hannah McEwen	OF	Fr./HS	L/R	5-7	San Diego, Calif./Patrick Henry HS
24	Nicole Duncan	C	Fr./HS	R/R	5-7	Centralia, Mo./Centralia
28	Sydney Benz	INF	Jr./1L	R/R	5-5	Carol Stream, Ill./Louisville
31	Caroline Hedgcock	LHP	Soph./1L	L/L	5-8	Downers Grove, Ill./South HS
32	Allison Stewart	RHP	R-Jr./2L	R/R	5-11	Olathe, Kan./East HS
33	Jada Dotson	OF	Fr./HS	R/R	5-6	White House, Tenn./Ensworth HS
34	Madelyn Brotherton	UTL	Soph./1L	R/R	5-9	Mena, Ark./Mena
55	Katie Warrick	INF/RHP	Jr./1L	R/R	6-0	Chapel Hill, Tenn./UT Martin
66	Aly Manzo	INF	Soph./1L	R/R	5-7	Roseville, Calif./Roseville

COACHING/SUPPORT STAFF

Head Coach _____ Courtney Deifel (Third Season)
 Assistant Coach _____ Yolanda McRae (Third Season)
 Assistant Coach _____ Matt Meuchel (Second Season)
 Volunteer Assistant _____ Jordan McElroy (Third Season)
 Director of Operations _____ Paige Williams (Third Season)



PRONUNCIATION GUIDE

Carley Haizlip HAZE-lip
 A.J. Belans buh-LANS
 Autumn Buczek Bue-sick
 Haydi Bugarin HY-dee BOO-gair-in
 Loren Krzysko Crisco
 Linnie Malkin Mall-kin
 Courtney Deifel DIE-ful
 Matt Meuchel Michael

MILESTONE WATCH

Autumn Buczek | SR | INF

Looking for: 100 runs (ARK #7)
Looking for: 184 hits (ARK #10)

Current total: 99
Current total: 176

Needs: 1
Needs: 8

Tori Cooper | SR | OF

Looking for: 20 home runs (ARK #10)
Looking for: 124 hits (ARK #25)

Current total: 17
Current total: 115

Needs: 3
Needs: 9

Ashley Diaz | JR | INF

Looking for: 22 home runs (ARK #6)
Looking for: 97 RBI (ARK #10)
Looking for: 150 hits (career)

Current total: 21
Current total: 90
Current total: 139

Needs: 1
Needs: 7
Needs: 11

Autumn Storms | SO | RHP

Looking for: 200 strikeouts (career)
Looking for: 31 wins (ARK #8)

Current total: 198
Current total: 28

Needs: 2
Needs: 3

Career Multi-Hit Games...

Autumn Buczek (44), Ashley Diaz (38), Tori Cooper (25), Hannah McEwen (17), A.J. Belans (15), Loren Krzysko (13), Haydi Bugarin (9), Kayla Green (9), Katie Warrick (9), Lauren Archuleta (6), Aly Manzo (4), Sydney Parr (4), Linnie Malkin (3)

Career Multi-RBI Games...

Ashley Diaz (25), Tori Cooper (16), A.J. Belans (14), Hannah McEwen (11), Loren Krzysko (8), Katie Warrick (8), Lauren Archuleta (7), Autumn Buczek (7), Kayla Green (6), Haydi Bugarin (5), Linnie Malkin (1), Aly Manzo (1), Sydney Parr (1)

ONE THROUGH NINE

Arkansas is fourth in the SEC and tied for 23rd nationally with 50 home runs. With Hannah McEwen's two-HR outing at Saint Louis (April 10), the team has hit a home run from each spot in the lineup (*HR tracker, page 9*).

IT'S GETTING LATE

Arkansas' 4-2, 10-inning win at No. 11 Auburn (April 22) was the program's longest game since an 11-inning win at No. 8 Missouri during the 2013 season. The Razorbacks are 1-1 in extra-inning games this year.

FRESHMAN WATCH LIST

Pitcher Mary Haff has earned a spot on the Schutt Sports/NFCA Division I Freshman of the Year Top 25 watch list. She is one of nine pitchers on the list and one of five freshmen listed from the SEC.

TOP FRESHMAN, PART III

On the strength of a 3-0 week including a pair of victories against No. 15 Alabama, pitcher Mary Haff was named SEC Freshman of the Week for a third time this season. She had 26 strikeouts with just three walks in 21.0 innings of work.

IT'S A SWEEP

The Razorbacks' sweep of No. 20 Mississippi State was the program's first in SEC play since 2013 and their first ever against a ranked opponent in a three-game series. It was also the first series win against the Bulldogs since 2010.

STORMS NAMED PITCHER OF THE WEEK

After a 2-0 week with a 0.00 ERA against Mississippi State including a complete-game shutout in game two to clinch the series, sophomore Autumn Storms was named SEC Pitcher of the Week. She is the sixth Pitcher of the Week in program history and first since the 2009 season.

13 PITCHES LATER...

On the 13th pitch of her at-bat against Mississippi State's Cassidy Knudsen, junior Katie Warrick hit her team-high seventh home run in the sixth inning of an 8-2 win (April 1) at Bogle Park. Warrick fell behind 1-2 and then fouled off five-consecutive pitches before clearing sending the ball over the wall in center field.

COMEBACK SZN

Arkansas' seven-run fifth against Missouri (March 25) was

the program's highest-scoring inning in SEC play since an eight-run inning against South Carolina in 2014. The runs came by way of five hits, three walks and an error.

WIN NO. 100

Arkansas' win over Missouri (March 25) doubled as win No. 100 in head coach Courtney Deifel's career. She had 73 of those victories at Arkansas; the first 27 wins of her career came at Maryland (2015).

BATTLE TESTED, SEC APPROVED

In the first SEC start of her career and facing the top hitting and scoring team in the nation, freshman Mary Haff limited No. 11 Georgia (March 12) to five hits and an unearned run in eight-plus innings. She also registered nine strikeouts.

AND THE WINNER IS...

Hannah McEwen (.500, 3 HR, 16 RBI, 7 R) was named the SEC Co-Player of the Week (March 5), becoming the third freshman in program history to earn the honor.

TWICE THE FUN

For a second time this season, Mary Haff (4-0, 0.00 ERA, 40 Ks) was named SEC Freshman of the Week (March 5). She also threw the program's seventh no-hitter and tallied a save.

NO-NO FOR STORMS

One night removed from Mary Haff's no-hitter, sophomore Autumn Storms pitched a no-hitter of her own in a win over Central Connecticut State (March 3). She established a career high of nine strikeouts in the triumph.

18 FOR 18

Junior Ashley Diaz's home run against Central Connecticut State was the 18th of her career and moved her into a tie for 10th on the program's all-time list. The two-run shot to left field cleared the outer gate at Bogle Park.

PROGRAM-BEST START

With its win over Villanova (Feb. 24), Arkansas improved to 9-0 which marked the best start in program history which previously belonged to the 2017 team (8-0).

ENJOYING THE SUNSHINE STATE

Hannah McEwen hit .579 (11-for-19) with 10 runs driven in and eight runs scored during the Madeira Beach Invita-

WHAT HAPPENS WHEN...

OVERALL	37-11
SEC	12-9
HOME	24-2
AWAY	4-8
NEUTRAL	9-1
VS RANKED OPPONENTS	8-8

GAME LENGTH

FIVE INNINGS	4-2
SIX INNINGS	3-0
SEVEN INNINGS	29-8
EXTRA INNINGS	1-1

SITUATION

DAY GAME (BEFORE 6PM)	30-6
NIGHT GAME (6PM OR LATER)	7-5
ARKANSAS SCORES FIRST	32-4
OPPONENT SCORES FIRST	5-7
ARKANSAS SCORES IN FIRST INN.	14-3
OPPONENT SCORES IN FIRST INN.	3-1
VS RHP	35-9
VS LHP	2-2
ONE-RUN GAME	6-6
TWO-RUN GAME	5-1
5+ RUN GAME	17-2
LEADING AFTER SIX INNINGS	26-1
TRAILING AFTER SIX INNINGS	0-7
TIED AFTER SIX INNINGS	4-1

STATISTICS

SCORES 0-2 RUNS	2-8
SCORES 3-5 RUNS	13-3
SCORES 6-9 RUNS	17-0
SCORES 10+ RUNS	5-0
OPP. SCORES 0-2 RUNS	26-3
OPP. SCORES 3-5 RUNS	9-3
OPP. SCORES 6-9 RUNS	2-4
OPP. SCORES 10+ RUNS	0-1
MORE HITS THAN OPPONENT	29-4
FEWER HITS THAN OPPONENT	2-6
HITS ARE TIED	6-1
MADE NO ERRORS	11-3
MADE ONE ERROR	17-6
MADE 2+ ERRORS	9-2

BY DAY

SUNDAY	10-2
MONDAY	2-2
TUESDAY	4-0
WEDNESDAY	1-1
THURSDAY	0-0
FRIDAY	8-3
SATURDAY	12-3

BY MONTH

FEBRUARY	10-1
MARCH	17-5
APRIL	10-5
MAY	0-0



SEC STANDINGS/SCHEDULE
(as of May 1)

Team	SEC	Overall	Streak
#4 Florida	17-4	44-8	W1
#5 Georgia	15-6	42-8	L1
#12 South Carolina	14-7	41-11	W7
#9 Texas A&M	13-8	40-12	W4
#7 Tennessee	12-9	42-10	W2
#16 ARKANSAS	12-9	37-11	W3
#13 LSU	10-10	37-13	L1
#15 Auburn	11-12	38-14	L3
#18 Alabama	9-12	29-17	W1
#20 Kentucky	6-14	29-17	L2
Missouri	6-14	28-24	W4
#24 Mississippi State	6-15	34-18	L3
Ole Miss	5-16	28-21	L3

(Ranking in USA Today/NFCA Top 25 poll)



2018 SEC TOURNAMENT
May 9-12 | Columbia, Missouri

HOME ATTENDANCE TOP 10

OVERALL

#	Draw	Opponent	Date
1	3,448	Ole Miss	4-28-2018
2	2,756	Missouri	3-24-2018
3	2,023	Georgia	5-6-2017
4	1,544	#14 Tennessee	3-18-2017
5	1,531	#9 Oklahoma	4-20-2016
6	1,401	Ole Miss	4-29-2018
7	1,276	#5 Texas A&M	4-15-2017
8	1,262	#12 LSU	4-30-2016
9	1,248	Missouri	3-23-2018
10	1,234	#4 Alabama	5-2-2015

HOME OPENER

#	Draw	Opponent	Date
1	961	Drake	2-27-2016
2	833*	Oklahoma	2-2-2001
3	715	#19 La.-Lafayette	3-5-2010
4	604	#24 Auburn	3-11-2011
5	518*	Oregon	2-23-2002
6	510	Ball State	2-27-2009
7	505	Nebraska	3-3-2017
8	401	Butler	2-13-2014
9	373	Tennessee State	2-24-2012
10	372	Tulsa	3-10-2015

* - at Lady Back Yard



As part of their 2018 schedule, the Razorbacks are set to play 25 home games at Bogle Park and will face 12 teams overall that played in last year's NCAA Tournament including five that advanced to the Super Regionals.

tional. Six of 11 hits went for extra bases including two home runs. McEwen had at least two hits in each game and raised her batting average more than 200 points.

NICE START, MARY

Behind a 3-0 start to her career and 31 strikeouts in 18.1 innings of work, Mary Haff was named the SEC Freshman of the Week (Feb. 19). She also tallied a save and held hitters to a .095 batting average in four appearances during the Mary Nutter Collegiate Classic.

LINNIE SAYS BYE...TWICE

Freshman Linnie Malkin began her Razorback career with a home run in each of her first two at-bats. Against Grand Canyon, she opened the scoring with a two-run blast in the second and followed with a solo shot in the fourth frame.

WHO'S BACK?

The Razorbacks return three players—Belans, Buczek and Diaz—that started all 55 games in 2017. Overall, Arkansas welcomes back 18 letterwinners. Belans was named to the All-SEC Second Team while sophomore Autumn Storms was an All-SEC and All-South Region performer.

WHAT LIES AHEAD

Arkansas is set to face 11 teams ranked or receiving votes in the preseason NFCA poll including five (Alabama, Auburn, LSU, Ole Miss and Utah) that played in a Super Regional last season. The Razorbacks will also see eight players named to the USA Softball Top 50 Preseason Watch List.

THINGS ARE LOOKING UP

The Razorbacks' 31-24 record in 2017 marked a 14-win improvement from the previous year, the largest increase among teams in a Power 5 conference. It also marked the program's first 30-win campaign since 2013.

STARTING POINT

In the SEC preseason coaches' poll, Arkansas was picked to finish 10th in the league; the team had been picked 13th in the previous two seasons. The Razorbacks also start the year receiving votes in the NFCA and USA Softball polls.

BACK IN (POSTSEASON) PLAY

Arkansas snapped a three-year postseason absence with

trips to the SEC and NCAA Tournament. For the sixth time in seven NCAA appearances, the Razorbacks were part of the Norman Regional and lost to eventual national champion Oklahoma in an elimination game.

TOP-25 RECRUITING CLASS

Featuring a pair of top-50 signees, Arkansas' most recent recruiting class was ranked No. 22 by FloSoftball. The new Razorbacks are Larissa Cesena (Riverside, Calif.), Taylor Greene (Milton, Ga.), Maggie Hicks (East End, Ark.), Megan Robertson (Milton, Fla.) and Sam Torres (Temecula, Calif.). Individually, Greene and Cesena are ranked No. 37 and 48, respectively.



Courtney Deifel became the fourth head coach in program history when she was hired June 11, 2015. In two seasons at Arkansas, she has orchestrated the Razorbacks' return to postseason play, capping the 2017 campaign by earning a spot in the SEC Tournament and selection to the NCAA Tournament.

In her second season in Fayetteville, Deifel guided Arkansas to a 31-24 record which marked a 14-win improvement from the previous season, marking the largest increase in the country among Power 5 programs. The Razorbacks also tallied seven wins in SEC play, equaling the combined total from the previous three seasons. In recognition of the team's performance, Deifel was named the 2017 D1SoftballNews Coach of the Year.

From year one to two under Deifel, Arkansas' pitching staff lowered its combined ERA by more than four runs (6.98 to 2.82) and added more than 20 points to its batting average (.260 to .284). The Razorbacks also led the SEC and tied for 17th in the NCAA with 59 home runs. During the year, Arkansas earned its first national ranking since 2013 when it was slotted at No. 24 in the March 7 release ESPN/USA Softball poll.

Individually, Deifel saw two Razorbacks earn NFCA All-South Region accolades with Nicole Schroeder and Autumn Storms earning second-team and third-team honors, respectively. Storms was also named to the SEC All-Freshman Team while A.J. Belans was voted to the All-SEC Second Team. Schroeder went on to be drafted by the Akron Racers as the program's second NPF selection.

Deifel's first win over a ranked team at Arkansas came during the 2016 season when the Razorbacks knocked off No. 23 Nebraska, 11-10, during the Easton Tournament in Fullerton, Calif.; the team added five ranked wins in 2017. The 2016 campaign also saw newcomer Ashley Diaz make an immediate impact as a member of the NFCA All-South Region Second Team. She also appeared on the NFCA National Freshman of the Year Top 25 Watch List.

During her playing and coaching careers prior to coming to Arkansas, Deifel advanced to 11 NCAA Tournaments including a four-year run to the Women's College World Series (WCWS) as an All-American catcher at California that was highlighted by winning the 2002 national title.

The Bears also finished second (2003), fifth (2001) and seventh (2000) at the WCWS over her four-year run. Her postseason successes also featured a pair of Super Regionals as a graduate assistant at Oklahoma and five NCAA Regionals as an assistant at Maryland and Louisville.

As a first-year head coach, Deifel ushered in a culture of change for Maryland in 2015. Along with the program's 16-game improvement from the previous season, the Terrapins' offense show tremendous growth. Maryland finished 27th in the NCAA with 6.28 runs per game be-

DEIFEL YEAR-BY-YEAR

Year	School	Overall	Conf.	Postseason
2015	Maryland	27-27	9-14	--
2016	Arkansas	17-39	1-23	--
2017	Arkansas	31-24	7-17	NCAA Regional
2018	Arkansas	37-11	12-9	--
4 seasons		112-101	29-63	1 appearance

At Arkansas (2016-pres.): 85-74 (.535)
At Maryland (2015): 27-27 (.500)

hind 339 runs scored, up more than 150 runs from 2014. Deifel also led her team to a .309 batting average, a 40-point jump from 2014 which also ranked 57th in the NCAA.

Individually, Deifel guided three players to all-conference accolades and a pair of NFCA all-region honors. Lindsey Schmeister was an All-Big Ten first team performer while Shannon Bustillos and Erin Pronobis landed on the All-Big Ten second team. Probonis and Corey Schwartz were also named to the NFCA All-Midwest Region Third Team. Under Deifel's watch, the trio helped Maryland to single-season school records in doubles, home runs, RBI and walks.

Prior to taking the head job at Maryland, Deifel spent four seasons as an assistant coach at Louisville in which she helped the Cardinals to four NCAA appearances, the 2014 American Athletic Conference Tournament title and an overall record of 176-60 (.746). Louisville averaged 44 wins in that time with a program-record 55 wins in 2012. Her student-athletes at Louisville racked up four NFCA All-America certificates and 29 all-conference selections.

Deifel played in 285 games in her career at California, missing just three games behind the plate over her four years. As a four-year starter behind the plate, she was a 2003 All-American, two-time All-Pac 10 selection and caught seven no-hitters. She is still the program's career leader with 1,969 putouts.

Aside from her accomplishments in collegiate softball, Deifel had a successful professional career following her days at Cal. In 2004, she helped the NY/NJ Juggernaut to the National Professional Fastpitch (NPF) league title. Deifel also spent three years with LeoPalac21 in Japan that resulted in a runner-up showing and a pair of third-place finishes.

Deifel and husband Joe are the parents to two sons, Trip and Walt. The family resides in Fayetteville.

2018 TEAM HIGHS

At bats	40	at #11 Auburn (4/21)
Runs scored	15	vs Marist (2/23)
Hits	14	vs Manhattan (2/23)
RBI	14	vs Marist (2/23)
Doubles	4	Northern Colorado (3/2)
Triples	1	10 times
Home runs	4	Missouri State (2/28)
Walks	9	vs Marist (2/23)
	9	#20 Mississippi State (4/1)
Strikeouts	11	at #11 Georgia (3/12)
Sac hits	2	C. Connecticut State (3/4)
Sac flies	2	UT Arlington (3/20)
	2	at Saint Louis (4/10)
Stolen bases	4	vs Manhattan (2/23)
Hit by pitch	2	vs Grand Canyon (2/17)
Runners LOB	14	vs Manhattan (2/23)
Hit into DP	2	vs Manhattan (2/23)
	2	C. Connecticut State (3/4)
Putouts	30	at #11 Auburn (4/21)
Assists	13	vs Manhattan (2/23)
	13	#15 Alabama (4/13)
Errors	3	Four times
Passed balls	3	UT Arlington (3/20)
DPs turned	1	Nine times
Innings	10.0	at #11 Auburn (4/21)
Runs allowed	11	at #11 Auburn (4/20)
Earned allowed	10	at #11 Auburn (4/20)
Walks allowed	6	at #11 Auburn (4/20)
Strikeouts	15	vs Fordham (2/19)
Hits allowed	10	at #11 Georgia (3/10)
	10	vs Iowa State (3/16)
	10	Missouri (3/25)
Doubles allowed	3	Dartmouth (3/2)
	3	at #11 Auburn (4/20)
Triples allowed	1	at #11 Auburn (4/21)
HRs allowed	3	at #11 Georgia (3/10)
Wild pitches	1	11 times
Hit batters	4	vs McNeese (2/25)

2018 AWARDS & HONORS

Mary Haff
SEC Freshman of the Week (Feb. 19)
SEC Freshman of the Week (March 5)
SEC Co-Freshman of the Week (April 17)
NFCA/Schutt Sports Freshman of the Year Top 25

Hannah McEwen
SEC Co-Player of the Week (March 5)
SEC Freshman of the Week (May 1)

Autumn Storms
College Sports Madness SEC Player of the Week (April 2)
SEC Pitcher of the Week (April 3)



Current Razorbacks in Program Top 10

Batting Average (minimum 250 AB)

1.	.357	Devon Wallace	2012-15
2.	.347	Stephanie Canfield	2013-17
3.	.336	Clarisa Navarro	2012-14
4.	.313	Kasey Fagan	2014-15
5.	.308	Autumn Buczek	2015-18
6.	.305	Ashley Diaz	2016-18
7.	.300	Jessica Bachkora	2007-10
8.	.296	Rachel LeMaster	2004-07
9.	.294	Brett Erickson	1997,99-00
10.	.292	Dana Gulick	1997-00

Slugging Percentage (minimum 250 AB)

1.	.671	Devon Wallace	2012-15
2.	.542	Nicole Schroeder	2013-17
3.	.537	Miranda Dixon	2007-10
4.	.517	Clarisa Navarro	2012-14
5.	.505	Kasey Fagan	2014-15
6.	.481	Ashley Diaz	2016-18
7.	.475	Amanda Geile	2011-14
8.	.471	Jessica Bachkora	2007-10
9.	.466	Stephanie Canfield	2013-17
10.	.462	A.J. Belans	2017-18

Runs Scored

1.	184	Devon Wallace	2012-15
2.	166	Jessica Bachkora	2007-10
3.	124	Kayla Johnson	2006-09
4.	119	Stephanie Canfield	2013-17
	119	Dana Gulick	1997-00
6.	105	Clarisa Navarro	2012-14
7.	100	Chloe Oprzedek	2011-14
8.	99	Autumn Buczek	2015-18
9.	97	Miranda Dixon	2007-10
10.	91	Shelby Hiers	2014-17

Triples

1.	15	Stephanie Canfield	2013-17
2.	12	Dayna Huckabee	2005-08
3.	10	Sheri Wahrmond	1998-00
4.	9	Jessica Bachkora	2007-10
5.	8	Chloe Oprzedek	2011-14
8.	8	Autumn Buczek	2015-18
7.	7	Danica White	1999-02
8.	6	Whitney Cloer	2006-09
9.	5	Brett Erickson	1997,99-00
	5	Mindy O'Malley	2003-06

Home Runs

1.	47	Devon Wallace	2012-15
2.	43	Miranda Dixon	2007-10
3.	38	Nicole Schroeder	2013-17
4.	29	Sandra Smith	2006-10
5.	24	Whitney Cloer	2006-09
6.	22	Amanda Geile	2011-14
7.	21	Chloe Oprzedek	2011-14
21	21	Ashley Diaz	2016-18
	21	Jessica Bachkora	2007-10
10.	20	Dayna Huckabee	2005-08

Sacrifice Flies

1.	9	Jayne Gee	2011-14
2.	8	Courtney Breault	2010-11
3.	7	Clarisa Navarro	2012-14
	7	Jennifer Cirigliano	1997-00
5.	6	Sierra Bronkey	2011-15
	6	Sheri Wahrmond	1998-00
6.	6	Ashley Diaz	2016-18
8.	5	Whitney Cloer	2006-09
	5	Aly Sartini	1997-00
10.	4	Eight times	

Stolen Bases

1.	75	Rachel LeMaster (75-99)	2004-07
2.	73	Dana Gulick (73-86)	1997-00
3.	57	Jessica Bachkora (57-67)	2007-10
4.	56	Blaire Perry (56-82)	2002-06
5.	38	Mindy O'Malley (38-50)	2003-06
	38	Andy Wharton (38-50)	1999-02
7.	34	Stephanie Canfield (34-38)	2013-17
8.	33	Ashley Martindale (33-37)	2011-14
9.	32	Autumn Buczek (32-36)	2015-18
10.	30	Devon Wallace (30-36)	2012-15

Earned Run Average (minimum 200 IP)

1.	1.59	Heather Schlichtman	2001-04
2.	1.66	Rachel Talley	1999-02
3.	1.90	Tammy Kincaid	1997-00
4.	2.19	Autumn Storms	2017-18
5.	2.43	Jennifer Bottoms	1998-01
6.	3.04	Valanna Lyons	2002-05
7.	3.07	Katy Henry	2005-08
8.	3.13	Blaire Perry	2002-06
9.	3.14	Kimmy Beasley	2011-14
10.	3.34	Hope McLemore	2010-13

Opponent Batting Average (minimum 200 IP)

1.	.200	Heather Schlichtman	2001-04
2.	.225	Rachel Talley	1999-02
3.	.235	Tammy Kincaid	1997-00
4.	.248	Kimmy Beasley	2011-14
5.	.253	Autumn Storms	2017-18
6.	.261	Blaire Perry	2002-06
7.	.265	Hope McLemore	2010-13
8.	.265	Katy Henry	2005-08
9.	.268	Valanna Lyons	2002-05
10.	.272	Jennifer Bottoms	1998-01

Walks Per 7 IP (minimum 200 IP)

1.	1.22	Rachel Talley	1999-02
2.	1.40	Tammy Kincaid	1997-00
3.	1.41	Autumn Storms	2017-18
4.	1.71	Katy Henry	2005-08
5.	1.76	Miranda Dixon	2007-10
6.	1.91	Jennifer Bottoms	1998-01
7.	2.03	Heather Schlichtman	2001-04
8.	2.48	Hope McLemore	2010-13
9.	2.49	Chelsea Cohen	2010-13
10.	2.65	Kimmy Beasley	2011-14

Wins

1.	73	Heather Schlichtman (73-67)	2001-04
2.	72	Tammy Kincaid (72-80)	1997-00
3.	56	Katy Henry (56-68)	2005-08
4.	52	Rachel Talley (52-50)	1999-02
5.	35	Miranda Dixon (35-45)	2007-10
6.	32	Chelsea Cohen (32-27)	2010-13
7.	31	Grace Moll (31-51)	2014-17
8.	28	Autumn Storms (28-22)	2017-18
9.	26	Hope McLemore (26-28)	2010-13
	26	Kimmy Beasley (26-25)	2011-14

Saves

1.	9	Katy Henry	2005-08
	9	Rachel Talley	1999-02
	9	Tammy Kincaid	1997-00
4.	7	Miranda Dixon	2007-10
5.	6	Heather Schlichtman	2001-04
	6	Jennifer Bottoms	1998-01
7.	5	Hope McLemore	2010-13
8.	4	Autumn Storms	2017-18
	4	Valanna Lyons	2002-05
10.	3	Kimmy Beasley	2011-14
	3	Chelsea Cohen	2010-13
	3	Sarah Topham	2004-06

Shutouts

1.	26	Heather Schlichtman	2001-04
2.	19	Tammy Kincaid	1997-00
3.	15	Katy Henry	2005-08
	15	Rachel Talley	1999-02
5.	9	Jennifer Bottoms	1998-01
	9	Mary Haff	2018
7.	6	Grace Moll	2014-17
	6	Miranda Dixon	2007-10
9.	5	Chelsea Cohen	2010-13
	5	Hope McLemore	2010-13
	5	Kim Jones	2008-11

Fielding Percentage (minimum 100 chances)

1.	.992	Lisa Nieman	2002-03
2.	.992	Kayla Green	2018
3.	.990	Leslie Dixon	2008-11
4.	.989	Danica White	1999-02
5.	.989	Devon Wallace	2012-15
6.	.988	Ashley Diaz	2016-18
7.	.985	Whitney Cloer	2006-09
8.	.985	Samantha Buckner	2005-08
9.	.985	Shana Easley	2003-06
10.	.984	Jayne Gee	2011-14

Chances

1.	1697	Kim Eiben	2000-03
2.	1682	Jennifer Cirigliano	1997-00
3.	1480	Danica White	1999-02
4.	1362	Shana Easley	2003-06
5.	1251	Samantha Buckner	2005-08
6.	1241	Whitney Cloer	2006-09
7.	1157	Jayne Gee	2011-14
8.	1043	Ashley Diaz	2016-18
9.	930	Sandra Smith	2006-10
10.	913	Devon Wallace	2012-15

Putouts

1.	1563	Kim Eiben	2000-03
2.	1412	Jennifer Cirigliano	1997-00
3.	1302	Danica White	1999-02
4.	1233	Shana Easley	2003-06
5.	1150	Samantha Buckner	2005-08
6.	1122	Whitney Cloer	2006-09
7.	1046	Jayne Gee	2011-14
8.	1001	Ashley Diaz	2016-18
9.	880	Devon Wallace	2012-15
10.	663	Sandra Smith	2006-10

Assists

1.	558	Tiffany Woolley	1999-02
2.	458	Brett Erickson	1997,99-00
3.	400	Aly Sartini	1997-00
4.	372	Chloe Oprzedek	2011-14
5.	371	Autumn Buczek	2015-18
6.	367	Dayna Huckabee	2005-08
7.	347	Blaire Perry	2002-06
8.	339	Tammy Kincaid	1997-00
9.	306	Heather Schlichtman	2001-04
10.	305	Clarisa Navarro	2012-14

Double Plays Turned

1.	42	Kim Eiben	2000-03
2.	36	Ashley Diaz	2016-18
3.	33	Aly Sartini	1997-00
4.	32	Devon Wallace	2012-15
	32	Jennifer Cirigliano	1997-00
6.	31	Sandra Smith	2006-10
7.	30	Samantha Buckner	2005-08
8.	29	Tiffany Woolley	1999-02
9.	28	Jennifer Bottoms	1998-01
10.	25	Dayna Huckabee	2005-08
	25	Cortney Mitchell	2001-02

Season Statistics (Overall)

Record: 37-11 Home: 24-2 Away: 4-8 Neutral: 9-1 SEC: 12-9

Player	avg	gp-gs	ab	r	h	2b	3b	hr	rbi	tb	slg%	bb	hp	so	gdp	ob%	sf	sh	sb-att	po	a	e	fld%	
Hannah McEwen	.370	48-48	154	40	57	7	1	10	51	96	.623	18	3	12	0	.438	3	0	0-0	34	1	2	.946	
Autumn Buczek	.321	48-48	168	27	54	5	4	0	14	67	.399	12	0	15	0	.367	0	0	7-8	46	111	12	.929	
Ashley Diaz	.301	47-46	136	17	41	6	0	6	28	65	.478	12	0	14	3	.353	2	1	0-0	256	4	3	.989	
Haydi Bugarin	.278	45-45	108	24	30	5	2	4	17	51	.472	11	2	19	1	.350	2	1	2-3	72	56	11	.921	
Kayla Green	.260	47-47	131	19	34	11	1	6	26	65	.496	9	5	22	1	.324	3	1	0-0	336	29	3	.992	
A.J. Belans	.245	38-37	106	12	26	4	0	3	15	39	.368	11	0	8	1	.316	0	1	0-0	33	51	10	.894	
Loren Krzysko	.242	48-48	128	22	31	5	0	6	21	54	.422	20	2	19	2	.349	2	1	1-1	45	0	1	.978	
Tori Cooper	.236	38-37	106	19	25	4	0	3	16	38	.358	12	1	17	0	.314	2	0	1-1	33	1	2	.944	

Carley Haizlip	1.000	29-0	1	11	1	0	0	0	0	1	1.000	1	0	0	0	1.000	0	0	0-0	0	0	0	.000	
Katie Warrick	.319	34-30	94	12	30	6	0	8	22	60	.638	11	0	7	1	.383	2	0	0-0	44	2	2	.958	
Linnie Malkin	.293	21-14	41	8	12	2	0	3	8	23	.561	10	0	11	0	.431	0	0	0-0	3	0	0	1.000	
Aly Manzo	.278	27-16	54	7	15	3	1	1	7	23	.426	7	1	3	0	.371	0	2	1-1	9	19	0	1.000	
Sydney Parr	.275	36-15	40	13	11	1	1	0	5	14	.350	5	0	4	0	.348	1	0	4-4	29	2	0	1.000	
Caroline Hedgcock	.250	6-1	4	0	1	0	0	0	0	1	.250	0	0	2	0	.250	0	0	0-0	0	2	0	1.000	
Lauren Archuleta	.000	4-1	3	0	0	0	0	0	0	0	.000	0	0	0	0	.000	0	1	0-0	8	2	0	1.000	
Sydney Benz	.000	6-0	2	2	0	0	0	0	0	0	.000	0	0	1	0	.000	0	0	0-0	0	0	0	.000	
Jada Dotson	.000	11-0	1	4	0	0	0	0	0	0	.000	0	0	0	0	.000	0	0	1-1	0	0	0	.000	
Nicole Duncan	.000	5-0	1	1	0	0	0	0	0	0	.000	0	0	0	0	.000	0	0	0-0	1	0	0	1.000	
Keely Edwards	.000	37-0	0	16	0	0	0	0	0	0	.000	0	0	0	0	.000	0	0	0-0	0	0	0	.000	
Macy Brotherton	.000	1-0	0	0	0	0	0	0	0	0	.000	1	0	0	0	1.000	0	0	0-0	0	0	0	.000	
Mary Haff	.000	1-1	0	0	0	0	0	0	0	0	.000	1	0	0	0	1.000	0	0	0-0	5	27	3	.914	
Autumn Storms	.000	1-1	0	0	0	0	0	0	0	0	.000	0	0	0	0	.000	0	0	0-0	0	35	0	1.000	
Totals	.288	48	1278	254	368	59	10	50	230	597	.467	141	14	154	9	.361	17	8	17-19	954	342	49	.964	
Opponents	.203	48	1197	117	243	28	1	26	106	351	.293	64	28	325	6	.259	2	13	18-32	895	362	72	.946	

LOB - Team (309), Opp (234). DPs turned - Team (9), Opp (15). CI - Team (1), Green 1.

(All games Sorted by Earned run avg)

Player	era	w-l	app	gs	cg	sho	sv	ip	h	r	er	bb	so	2b	3b	hr	b/avg	wp	hp	bk	sfa	sha
Mary Haff	1.34	24-4	35	25	15	9/1	2	167.1	79	38	32	28	211	10	1	14	.136	5	14	0	0	8
Autumn Storms	2.08	12-7	30	22	6	3/1	2	131.0	128	51	39	26	102	12	0	7	.245	5	14	0	1	4

Katie Warrick	3.50	0-0	4	0	0	0/0	0	6.0	9	5	3	2	2	1	0	2	.346	0	0	0	0	0
Caroline Hedgcock	9.73	1-0	9	1	0	0/0	1	13.2	27	23	19	8	10	5	0	3	.391	1	0	0	1	1
Totals	2.05	37-11	48	48	21	13/1	5	318.0	243	117	93	64	325	28	1	26	.203	11	28	0	2	13
Opponents	4.62	11-37	48	48	17	4/0	1	298.1	368	254	197	141	154	59	10	50	.288	25	14	0	17	8

PB - Team (11), Green 9, Duncan 2, Opp (7). Pickoffs - Team (1), Archuleta 1. SBA/ATT - Green (18-32), Storms (12-18), Haff (3-11), Hedgcock (3-3).

Season Statistics (Conference)

Record: 12-9 Home: 10-2 Away: 2-7 SEC: 12-9

Player	avg	gp-gs	ab	r	h	2b	3b	hr	rbi	tb	slg%	bb	hp	so	gdp	ob%	sf	sh	sb-att	po	a	e	fld%		
Hannah McEwen	.318	21-21	66	15	21	1	0	2	12	28	.424	11	1	9	0	.418	1	0	0-0	19	0	0	1.000		
Kayla Green	.288	21-21	59	8	17	5	1	2	12	30	.508	7	1	11	0	.368	1	0	0-0	125	13	2	.986		
A.J. Belans	.286	20-19	56	6	16	4	0	2	11	26	.464	4	0	6	1	.333	0	0	0-0	19	26	5	.900		
Autumn Buczek	.267	21-21	75	5	20	3	1	0	8	25	.333	4	0	8	0	.304	0	0	0-0	26	45	3	.959		
Katie Warrick	.254	21-21	59	6	15	4	0	3	14	28	.475	8	0	6	1	.333	2	0	0-0	33	1	2	.944		
Tori Cooper	.241	20-19	58	8	14	2	0	1	5	19	.328	4	0	13	0	.286	1	0	0-0	20	1	2	.913		
Loren Krzysko	.204	21-21	54	6	11	2	0	1	3	16	.296	8	1	7	1	.313	1	0	1-1	27	0	0	1.000		
Ashley Diaz	.200	20-19	60	2	12	3	0	0	6	15	.250	2	0	11	2	.222	1	1	0-0	100	1	0	1.000		

Haydi Bugarin	.244	19-19	41	10	10	3	1	0	1	15	.366	7	1	12	1	.367	0	1	0-0	33	26	6	.908		
Aly Manzo	.167	10-4	12	0	2	0	0	0	1	2	.167	3	1	1	0	.375	0	2	0-0	4	2	0	1.000		
Sydney Parr	.000	13-4	8	5	0	0	0	0	0	0	.000	0	0	2	0	.000	0	0	0-0	15	1	0	1.000		
Linnie Malkin	.000	3-0	3	0	0	0	0	0	0	0	.000	0	0	1	0	.000	0	0	0-0	0	0	0	.000		
Sydney Benz	.000	3-0	1	1	0	0	0	0	0	0	.000	0	0	0	0	.000	0	0	0-0	0	0	0	.000		
Jada Dotson	.000	1-0	0	1	0	0	0	0	0	0	.000	0	0	0	0	.000	0	0	0-0	0	0	0	.000		
Carley Haizlip	.000	12-0	0	2	0	0	0	0	0	0	.000	0	0	0	0	.000	0	0	0-0	0	0	0	.000		
Caroline Hedgcock	.000	1-0	0	0	0	0	0	0	0	0	.000	0	0	0	0	.000	0	0	0-0	0	0	0	.000		
Keely Edwards	.000	18-0	0	5	0	0	0	0	0	0	.000	0	0	0	0	.000	0	0	0-0	0	0	0	.000		
Totals	.250	21	552	80	138	27	3	11	73	204	.370	58	5	87	6	.323	7	4	1-1	425	144	21	.964		
Opponents	.234	21	551	67	129	14	1	16	65	193	.350	30	13	115	2	.289	2	6	14-20	415	185	24	.962		

LOB - Team (131), Opp (111). DPs turned - Team (4), Opp (8). CI - Team (1), Green 1.

(SEC games only Sorted by Earned run avg)

Player	era	w-l	app	gs	cg	sho	sv	ip	h	r	er	bb	so	2b	3b	hr	b/avg	wp	hp	bk	sfa	sha	
Mary Haff	2.21	10-3	17	11	7	3/0	0	79.1	48	26	25	15	80	6	1	10	.169	2	7	0	0	4	
Autumn Storms	3.27	2-6	13	10	2	1/0	0	55.2	70	31	26	11	28	6	0	5	.297	3	6	0	1	2	

Katie Warrick	0.00	0-0	1	0	0	0/0	0	0.2	2	0	0	0	1	0	0	0	.500	0	0	0	0	0	
Caroline Hedgcock	10.50	0-0	3	0	0	0/0	0	6.0	9	10	9	4	6	2	0	1	.333	0	0	0	1	0	
Totals	2.96	12-9	21	21	9	4/0	0	141.2	129	67	60	30	115	14	1	16	.234	5	13	0	2	6	
Opponents	2.99	9-12	21	21	8	3/0	1	138.1	138	80	59	58	87	27	3	11	.250	10	5	0	7	4	

PB - Team (1), Green 1, Opp (1). SBA/ATT - Green (14-20), Storms (10-13), Haff (1-4), Hedgcock (3-3).

2018 Home Run Tracker

#	Date	Player	Opponent	Site	# of Runs	Inning	Lineup Spot	Game Result
1	2-17-18	Linnie Malkin	Grand Canyon	Cathedral City, Calif.	2	2nd	8	W, 6-2
2!	2-17-18	Linnie Malkin	Grand Canyon	Cathedral City, Calif.	1	4th	8	W, 6-2
3!	2-17-18	Haydi Bugarin	Grand Canyon	Cathedral City, Calif.	1	4th	9	W, 6-2
4	2-17-18	Loren Krzysko	#21 Utah	Cathedral City, Calif.	1	1st	3	W, 4-2
5	2-18-18	A.J. Belans	Loyola Marymount	Cathedral City, Calif.	1	4th	4	W, 6-5
6	2-19-18	Kayla Green	Fordham	Cathedral City, Calif.	1	2nd	6	W, 4-2
7	2-19-18	Ashley Diaz	Fordham	Cathedral City, Calif.	1	6th	8	W, 4-2
8	2-23-18	Hannah McEwen	Marist	Madeira Beach, Fla.	4	4th	2	W, 15-3 (6)
9	2-23-18	Haydi Bugarin	Manhattan	Madeira Beach, Fla.	2	4th	9	W, 9-1 (6)
10	2-24-18	Kayla Green	Delaware	Madeira Beach, Fla.	2	1st	5	W, 10-1 (5)
11	2-24-18	Hannah McEwen	Delaware	Madeira Beach, Fla.	2	1st	2	W, 10-1 (5)
12	2-24-18	Linnie Malkin	Delaware	Madeira Beach, Fla.	1	2nd	6	W, 10-1 (5)
13	2-24-18	Loren Krzysko	Villanova	Madeira Beach, Fla.	3	3rd	3	W, 9-0 (5)
14	2-24-18	Kayla Green	Villanova	Madeira Beach, Fla.	1	4th	5	W, 9-0 (5)
15	2-25-18	Ashley Diaz	McNeese	Madeira Beach, Fla.	2	2nd	7	L, 5-6
16!	2-28-18	Loren Krzysko	Missouri State	Fayetteville, Ark.	1	2nd	7	W, 9-0 (5)
17!	2-28-18	Tori Cooper	Missouri State	Fayetteville, Ark.	1	2nd	8	W, 9-0 (5)
18	2-28-18	Hannah McEwen	Missouri State	Fayetteville, Ark.	4	4th	2	W, 9-0 (5)
19	2-28-18	Haydi Bugarin	Missouri State	Fayetteville, Ark.	3	5th	9	W, 9-0 (5)
20	3-2-18	Hannah McEwen	Northern Colorado	Fayetteville, Ark.	2	1st	2	W, 9-0 (6)
21	3-2-18	Kayla Green	Northern Colorado	Fayetteville, Ark.	3	3rd	4	W, 9-0 (6)
22	3-3-18	Hannah McEwen	Dartmouth	Fayetteville, Ark.	1	1st	2	W, 2-1
23	3-3-18	Loren Krzysko	C. Connecticut State	Fayetteville, Ark.	2	3rd	7	W, 7-0
24	3-4-18	Haydi Bugarin	C. Connecticut State	Fayetteville, Ark.	1	3rd	8	W, 6-5
25	3-4-18	Ashley Diaz	C. Connecticut State	Fayetteville, Ark.	2	5th	4	W, 6-5
26	3-12-18	Katie Warrick	at #11 Georgia	Athens, Ga.	2	6th	6	L, 4-5
27	3-16-18	Katie Warrick	Iowa State	Fayetteville, Ark.	2	3rd	4	W, 8-3
28	3-16-18	Katie Warrick	Iowa State	Fayetteville, Ark.	1	5th	4	W, 8-3
29	3-16-18	Hannah McEwen	Iowa State	Fayetteville, Ark.	3	6th	2	W, 8-3
30	3-16-18	Ashley Diaz	Saint Francis (Pa.)	Fayetteville, Ark.	3	3rd	3	W, 8-3
31	3-17-18	Katie Warrick	Saint Francis (Pa.)	Fayetteville, Ark.	1	2nd	4	W, 4-3
32	3-17-18	Ashley Diaz	Saint Francis (Pa.)	Fayetteville, Ark.	2	3rd	3	W, 4-3
33	3-18-18	Loren Krzysko	Omaha	Fayetteville, Ark.	4	1st	6	W, 4-0
34	3-20-18	Ashley Diaz	UT Arlington	Fayetteville, Ark.	2	1st	3	W, 6-0
35	3-20-18	Aly Manzo	UT Arlington	Fayetteville, Ark.	1	5th	5	W, 6-0
36	3-20-18	Katie Warrick	UT Arlington	Fayetteville, Ark.	1	6th	4	W, 6-0
37	3-20-18	Katie Warrick	UT Arlington	Fayetteville, Ark.	2	6th	4	W, 10-3
38	3-25-18	Tori Cooper	Missouri	Fayetteville, Ark.	1	3rd	8	W, 10-7
39	3-25-18	Kayla Green	Missouri	Fayetteville, Ark.	3	5th	6	W, 10-7
40	3-31-18	A.J. Belans	#20 Mississippi State	Fayetteville, Ark.	3	4th	8	W, 6-0
41	4-1-18	Katie Warrick	#20 Mississippi State	Fayetteville, Ark.	2	6th	4	W, 8-2
42	4-10-18	Tori Cooper	Saint Louis	St. Louis, Mo.	2	5th	4	W, 7-0
43	4-10-18	Hannah McEwen	Saint Louis	St. Louis, Mo.	1	4th	1	W, 5-0
44	4-10-18	Hannah McEwen	Saint Louis	St. Louis, Mo.	3	6th	1	W, 5-0
45	4-13-18	Kayla Green	#15 Alabama	Fayetteville, Ark.	3	7th	5	L, 5-6
46	4-21-18	A.J. Belans	#11 Auburn	Auburn, Ala.	2	10th	7	W, 4-2
47	4-21-18	Loren Krzysko	#11 Auburn	Auburn, Ala.	1	2nd	8	L, 2-4
48	4-28-18	Hannah McEwen	Ole Miss	Fayetteville, Ark.	1	1st	1	W, 3-0
49	4-28-18	Katie Warrick	Ole Miss	Fayetteville, Ark.	3	3rd	5	W, 8-3
50	4-28-18	Hannah McEwen	Ole Miss	Fayetteville, Ark.	4	6th	1	W, 8-3

! - back-to-back | * - pinch hitter



Game by Game Starters | by Position

DATE	OPPONENT	SP	C	1B	2B	3B	SS	LF	CF	RF	DP
Fri, Feb. 9	vs Kennesaw State										
Fri, Feb. 9	vs Nicholls										
Sat, Feb. 10	vs Nicholls										
Sat, Feb. 10	at Southeastern Louisiana										
Sat, Feb. 17	vs Grand Canyon	Haff	Green	Diaz	Bugarin	Buczek	Belans	Cooper	Krzysko	McEwen	Malkin
Sat, Feb. 17	vs #21 Utah	Storms	Green	Diaz	Bugarin	Buczek	Belans	Cooper	Krzysko	McEwen	Malkin
Sun, Feb. 18	vs Weber State	Storms	Green	Diaz	Bugarin	Buczek	Belans	Cooper	Krzysko	McEwen	Malkin
Sun, Feb. 18	vs Loyola Marymount	Hedgcock	Green	Diaz	Bugarin	Buczek	Belans	Parr	Krzysko	McEwen	Cooper
Mon, Feb. 19	vs Fordham	Haff	Green	Diaz	Manzo	Buczek	Belans	Cooper	Krzysko	McEwen	Bugarin
Fri, Feb. 23	vs Marist	Haff	Green	Diaz	Manzo	Bugarin	Buczek	Cooper	Krzysko	McEwen	Malkin
Fri, Feb. 23	vs Manhattan	Storms	Green	Diaz	Bugarin	Manzo	Buczek	Cooper	Krzysko	McEwen	Malkin
Sat, Feb. 24	vs Delaware	Storms	Green	Diaz	Bugarin	Buczek	Belans	Cooper	Krzysko	McEwen	Malkin
Sat, Feb. 24	vs Villanova	Haff	Green	Diaz	Bugarin	Buczek	Belans	Parr	Krzysko	McEwen	Malkin
Sun, Feb. 25	vs McNeese	Storms	Green	Diaz	Bugarin	Buczek	Belans	Parr	Krzysko	McEwen	Malkin
Wed, Feb. 28	Missouri State	Haff	Green	Diaz	Bugarin	Buczek	Belans	Cooper	Krzysko	McEwen	Malkin
Fri, March 2	Dartmouth	Storms	Green	Diaz	Bugarin	Buczek	Belans	Cooper	Krzysko	McEwen	Malkin
Fri, March 2	Northern Colorado	Haff	Green	Diaz	Bugarin	Buczek	Belans	Cooper	Krzysko	McEwen	Malkin
Sat, March 3	Dartmouth	Haff	Green	Diaz	Bugarin	Buczek	Belans	Cooper	Krzysko	McEwen	Malkin
Sat, March 3	Central Connecticut State	Storms	Green	Diaz	Bugarin	Buczek	Belans	Cooper	Krzysko	McEwen	Malkin
Sun, March 4	Northern Colorado	Haff	Green	Diaz	Bugarin	Buczek	Belans	Cooper	Krzysko	McEwen	Malkin
Sun, March 4	Central Connecticut State	Storms	Green	Diaz	Bugarin	Buczek	Belans	Parr	Krzysko	McEwen	Cooper
Tues, March 6	at Wichita State (Game 1)	Haff	Archuleta	Diaz	Bugarin	Buczek	Belans	Cooper	Krzysko	McEwen	Manzo
Tues, March 6	at Wichita State (Game 2)										
Sat, March 10	at #11 Georgia	Storms	Green	Diaz	Bugarin	Buczek	Belans	Cooper	Krzysko	McEwen	Warrick
Sun, March 11	at #11 Georgia	Haff	Green	Diaz	Bugarin	Buczek	Belans	Cooper	Krzysko	McEwen	Warrick
Mon, March 12	at #11 Georgia	Storms	Green	Diaz	Bugarin	Buczek	Belans	Cooper	Krzysko	McEwen	Warrick
Fri, March 16	Iowa State	Haff	Green	Diaz	Bugarin	Manzo	Buczek	Parr	Krzysko	McEwen	Warrick
Fri, March 16	Saint Francis (Pa.)	Storms	Green	Diaz	Bugarin	Manzo	Buczek	Parr	Krzysko	McEwen	Warrick
Sat, March 17	Omaha	Storms	Green	Diaz	Bugarin	Manzo	Buczek	Parr	Krzysko	McEwen	Warrick
Sat, March 17	Saint Francis (Pa.)	Haff	Green	Diaz	Bugarin	Manzo	Buczek	Parr	Krzysko	McEwen	Warrick
Sun, March 18	Omaha	Haff	Green	Diaz	Bugarin	Manzo	Buczek	Parr	Krzysko	McEwen	Warrick
Tues, March 20	UT Arlington (Game 1)	Haff	Green	Diaz	Bugarin	Manzo	Buczek	Parr	Krzysko	McEwen	Warrick
Tues, March 20	UT Arlington (Game 2)	Storms	Green	Diaz	Bugarin	Manzo	Buczek	Parr	Krzysko	McEwen	Warrick
Fri, March 23	Missouri	Haff	Green	Diaz	Bugarin	Manzo	Buczek	Parr	Krzysko	McEwen	Warrick
Sat, March 24	Missouri	Storms	Green	Diaz	Bugarin	Manzo	Buczek	Parr	Krzysko	McEwen	Warrick
Sun, March 25	Missouri	Haff	Green	Diaz	Bugarin	Buczek	Belans	Cooper	Krzysko	McEwen	Warrick
Fri, March 30	#20 Mississippi State	Haff	Green	Diaz	Bugarin	Buczek	Belans	Cooper	Krzysko	McEwen	Warrick
Sat, March 31	#20 Mississippi State	Storms	Green	Diaz	Bugarin	Buczek	Belans	Cooper	Krzysko	McEwen	Warrick
Sun, April 1	#20 Mississippi State	Haff	Green	Diaz	Bugarin	Buczek	Belans	Cooper	Krzysko	McEwen	Warrick
Fri, April 6	at #12 South Carolina	Storms	Green	Diaz	Bugarin	Buczek	Belans	Cooper	Krzysko	McEwen	Warrick
Sat, April 7	at #12 South Carolina	Haff	Green	Warrick	Manzo	Buczek	Belans	Parr	Krzysko	McEwen	Cooper
Sun, April 8	at #12 South Carolina	Storms	Green	Warrick	Manzo	Buczek	Belans	Parr	Krzysko	McEwen	Cooper
Tues, April 10	at Saint Louis (Game 1)	Haff	Green	Warrick	Manzo	Buczek	Belans	Cooper	Krzysko	McEwen	Diaz
Tues, April 10	at Saint Louis (Game 2)	Storms	Green	Warrick	Bugarin	Buczek	Belans	Cooper	Krzysko	McEwen	Diaz
Fri, April 13	#15 Alabama	Storms	Green	Warrick	Bugarin	Buczek	Belans	Cooper	Krzysko	McEwen	Diaz
Sat, April 14	#15 Alabama	Haff	Green	Warrick	Bugarin	Buczek	Belans	Cooper	Krzysko	McEwen	Diaz
Sun, April 15	#15 Alabama	Haff	Green	Warrick	Bugarin	Buczek	Belans	Cooper	Krzysko	McEwen	Diaz
Fri, April 20	at #11 Auburn	Haff	Green	Warrick	Bugarin	Buczek	Belans	Cooper	Krzysko	McEwen	Diaz
Sat, April 21	at #11 Auburn	Storms	Green	Warrick	Bugarin	Buczek	Belans	Cooper	Krzysko	McEwen	Diaz
Sat, April 21	at #11 Auburn	Haff	Green	Diaz	Bugarin	Buczek	Belans	Cooper	Krzysko	McEwen	Warrick
Sat, April 28	Ole Miss	Haff	Green	Diaz	Bugarin	Buczek	Belans	Cooper	Krzysko	McEwen	Warrick
Sun, April 29	Ole Miss	Storms	Green	Diaz	Bugarin	Buczek	Belans	Cooper	Krzysko	McEwen	Warrick
Mon, April 30	Ole Miss	Storms	Green	Diaz	Bugarin	Buczek	Belans	Cooper	Krzysko	McEwen	Warrick
Fri, May 4	at #13 LSU										
Sat, May 5	at #13 LSU										
Sun, May 6	at #13 LSU										

Game by Game Starters | by Lineup

DATE	OPPONENT	1	2	3	4	5	6	7	8	9	FX
Fri, Feb. 9	vs Kennesaw State										
Fri, Feb. 9	vs Nicholls										
Sat, Feb. 10	vs Nicholls										
Sat, Feb. 10	at Southeastern Louisiana										
Sat, Feb. 17	vs Grand Canyon	Buczek	McEwen	Krzysko	Belans	Cooper	Diaz	Green	Malkin	Bugarin	Haff
Sat, Feb. 17	vs #21 Utah	Buczek	McEwen	Krzysko	Belans	Cooper	Diaz	Green	Malkin	Bugarin	Storms
Sun, Feb. 18	vs Weber State	Buczek	McEwen	Krzysko	Belans	Cooper	Malkin	Green	Diaz	Bugarin	Storms
Sun, Feb. 18	vs Loyola Marymount	Buczek	McEwen	Krzysko	Belans	Cooper	Green	Hedgcock	Diaz	Bugarin	Parr
Mon, Feb. 19	vs Fordham	Buczek	McEwen	Krzysko	Belans	Cooper	Green	Manzo	Diaz	Bugarin	Haff
Fri, Feb. 23	vs Marist	Buczek	McEwen	Krzysko	Cooper	Green	Malkin	Diaz	Manzo	Bugarin	Haff
Fri, Feb. 23	vs Manhattan	Buczek	McEwen	Krzysko	Cooper	Green	Malkin	Manzo	Diaz	Bugarin	Storms
Sat, Feb. 24	vs Delaware	Buczek	McEwen	Krzysko	Belans	Green	Malkin	Cooper	Diaz	Bugarin	Storms
Sat, Feb. 24	vs Villanova	Buczek	McEwen	Krzysko	Belans	Green	Malkin	Diaz	Bugarin	Parr	Haff
Sun, Feb. 25	vs McNeese	Buczek	McEwen	Krzysko	Green	Belans	Malkin	Diaz	Bugarin	Parr	Storms
Wed, Feb. 28	Missouri State	Buczek	McEwen	Malkin	Green	Diaz	Belans	Krzysko	Cooper	Bugarin	Haff
Fri, March 2	Dartmouth	Buczek	McEwen	Malkin	Green	Diaz	Belans	Krzysko	Cooper	Bugarin	Storms
Fri, March 2	Northern Colorado	Buczek	McEwen	Malkin	Green	Diaz	Belans	Krzysko	Cooper	Bugarin	Haff
Sat, March 3	Dartmouth	Buczek	McEwen	Malkin	Green	Diaz	Belans	Krzysko	Cooper	Bugarin	Haff
Sat, March 3	Central Connecticut State	Buczek	McEwen	Malkin	Green	Diaz	Belans	Krzysko	Cooper	Bugarin	Storms
Sun, March 4	Northern Colorado	Buczek	McEwen	Malkin	Green	Diaz	Belans	Krzysko	Cooper	Bugarin	Haff
Sun, March 4	Central Connecticut State	Buczek	McEwen	Krzysko	Diaz	Green	Belans	Cooper	Bugarin	Parr	Storms
Tues, March 6	at Wichita State (Game 1)	Buczek	McEwen	Krzysko	Diaz	Manzo	Belans	Cooper	Archuleta	Bugarin	Haff
Tues, March 6	at Wichita State (Game 2)										
Sat, March 10	at #11 Georgia	Buczek	McEwen	Diaz	Green	Krzysko	Warrick	Cooper	Belans	Bugarin	Storms
Mon, March 12	at #11 Georgia	Buczek	McEwen	Diaz	Green	Krzysko	Warrick	Cooper	Belans	Bugarin	Haff
Mon, March 12	at #11 Georgia	Buczek	McEwen	Diaz	Green	Krzysko	Warrick	Cooper	Belans	Bugarin	Storms
Fri, March 16	Iowa State	Buczek	McEwen	Diaz	Warrick	Manzo	Krzysko	Green	Bugarin	Parr	Haff
Fri, March 16	Saint Francis (Pa.)	Buczek	McEwen	Diaz	Warrick	Manzo	Krzysko	Green	Bugarin	Parr	Storms
Sat, March 17	Omaha	Buczek	McEwen	Diaz	Warrick	Manzo	Krzysko	Green	Bugarin	Parr	Storms
Sat, March 17	Saint Francis (Pa.)	Buczek	McEwen	Diaz	Warrick	Manzo	Krzysko	Green	Bugarin	Parr	Haff
Sun, March 18	Omaha	Buczek	McEwen	Diaz	Warrick	Manzo	Krzysko	Green	Bugarin	Parr	Haff
Tues, March 20	UT Arlington (Game 1)	Buczek	McEwen	Diaz	Warrick	Manzo	Krzysko	Green	Bugarin	Parr	Haff
Tues, March 20	UT Arlington (Game 2)	Buczek	McEwen	Diaz	Warrick	Manzo	Krzysko	Green	Bugarin	Parr	Storms
Fri, March 23	Missouri	Buczek	McEwen	Diaz	Warrick	Manzo	Krzysko	Green	Bugarin	Parr	Haff
Sat, March 24	Missouri	Buczek	McEwen	Diaz	Warrick	Manzo	Krzysko	Green	Bugarin	Parr	Storms
Sun, March 25	Missouri	Buczek	McEwen	Diaz	Warrick	Krzysko	Green	Belans	Cooper	Bugarin	Haff
Fri, March 30	#20 Mississippi State	Buczek	McEwen	Diaz	Warrick	Krzysko	Green	Cooper	Belans	Bugarin	Haff
Sat, March 31	#20 Mississippi State	Buczek	McEwen	Diaz	Warrick	Krzysko	Green	Cooper	Belans	Bugarin	Storms
Sun, April 1	#20 Mississippi State	Buczek	McEwen	Diaz	Warrick	Krzysko	Green	Cooper	Belans	Bugarin	Haff
Fri, April 6	at #12 South Carolina	Buczek	McEwen	Diaz	Warrick	Krzysko	Green	Cooper	Belans	Bugarin	Storms
Sun, April 8	at #12 South Carolina	Buczek	McEwen	Warrick	Cooper	Green	Belans	Manzo	Krzysko	Parr	Haff
Sun, April 8	at #12 South Carolina	Buczek	McEwen	Warrick	Cooper	Green	Belans	Manzo	Krzysko	Parr	Storms
Tues, April 10	at Saint Louis (Game 1)	McEwen	Buczek	Warrick	Cooper	Green	Diaz	Belans	Krzysko	Manzo	Haff
Tues, April 10	at Saint Louis (Game 2)	McEwen	Buczek	Warrick	Cooper	Green	Diaz	Belans	Krzysko	Bugarin	Storms
Fri, April 13	#15 Alabama	McEwen	Buczek	Warrick	Cooper	Green	Diaz	Belans	Krzysko	Bugarin	Storms
Sat, April 14	#15 Alabama	McEwen	Buczek	Warrick	Cooper	Green	Diaz	Belans	Krzysko	Bugarin	Haff
Sun, April 15	#15 Alabama	McEwen	Buczek	Warrick	Cooper	Green	Diaz	Belans	Krzysko	Bugarin	Haff
Fri, April 20	at #11 Auburn	McEwen	Buczek	Warrick	Cooper	Green	Diaz	Belans	Krzysko	Bugarin	Haff
Sat, April 21	at #11 Auburn	McEwen	Buczek	Warrick	Cooper	Green	Diaz	Belans	Krzysko	Bugarin	Storms
Sat, April 21	at #11 Auburn	McEwen	Buczek	Cooper	Diaz	Belans	Warrick	Green	Krzysko	Bugarin	Haff
Sat, April 28	Ole Miss	McEwen	Buczek	Cooper	Diaz	Belans	Warrick	Green	Krzysko	Bugarin	Haff
Sun, April 29	Ole Miss	McEwen	Buczek	Belans	Diaz	Warrick	Green	Cooper	Krzysko	Bugarin	Storms
Mon, April 30	Ole Miss	McEwen	Buczek	Belans	Warrick	Green	Krzysko	Diaz	Cooper	Bugarin	Storms
Fri, May 4	at #13 LSU										
Sat, May 5	at #13 LSU										
Sun, May 6	at #13 LSU										

#2 A.J. Belans

Senior | INF | 5-5 | R/R | Hollywood, Fla. (FIU)

Season Highs

Hits _____ 3 at #11 Auburn | April 21, 2018
 RBI _____ 3 vs #20 Mississippi State | March 31, 2018
 Runs _____ *2 vs Dartmouth | March 2, 2018
 Walks _____ 2 vs Grand Canyon | Feb. 17, 2018
 AB _____ 5 at #11 Auburn | April 21, 2018

Career Highs

Hits _____ *3 at #11 Auburn | April 21, 2018
 RBI _____ 4 vs #14 Tennessee | March 17, 2017
 Runs _____ *2 vs Dartmouth | March 2, 2018
 Walks _____ *2 vs Grand Canyon | Feb. 17, 2018
 AB _____ 5 at #11 Auburn | April 21, 2018

Year	Avg	GP	GS	AB	R	H	2B	3B	HR	RBI	BB	SO	SB	ATT
2017	.295	55	55	156	20	46	12	0	8	33	16	21	0	0
2018	.245	38	37	106	12	26	4	0	3	15	11	8	0	0
TOTAL	.275	93	92	262	32	72	16	0	11	48	27	29	0	0

#8 Autumn Buczek

Senior | INF | 5-7 | L/R | Greenbrier, Ark. (Greenbrier)

Season Highs

Hits _____ *3 vs Ole Miss | April 28, 2018
 RBI _____ *2 vs Missouri | March 23, 2018
 Runs _____ 3 vs UT Arlington | March 20, 2018
 Walks _____ *2 vs #15 Alabama | April 13, 2018
 AB _____ *5 at #11 Auburn | April 21, 2018

Career Highs

Hits _____ 4 vs Central Michigan | Feb. 21, 2016
 RBI _____ 4 vs Buffalo | March 4, 2016
 Runs _____ *3 vs UT Arlington | March 20, 2018
 Walks _____ *2 vs #15 Alabama | April 13, 2018
 AB _____ *5 at #11 Auburn | April 21, 2018

Year	Avg	GP	GS	AB	R	H	2B	3B	HR	RBI	BB	SO	SB	ATT
2015	.243	45	27	70	12	17	1	0	0	1	2	20	4	5
2016	.281	56	56	167	28	47	4	2	0	13	7	24	12	13
2017	.349	55	55	166	32	58	5	2	1	13	8	22	9	10
2018	.321	48	48	168	27	54	5	4	0	14	12	15	7	8
TOTAL	.308	204	186	571	99	176	15	8	1	41	29	81	32	36

#10 Haydi Bugarin

Junior | INF | 5-3 | R/R | San Antonio, Texas (East Central HS)

Season Highs

Hits _____ 3 vs Manhattan | Feb. 23, 2018
 RBI _____ 5 vs Manhattan | Feb. 23, 2018
 Runs _____ *2 vs Ole Miss | April 29, 2018
 Walks _____ *1 vs Ole Miss | April 28, 2018
 AB _____ *4 at #11 Auburn | April 21, 2018

Career Highs

Hits _____ 3 vs Manhattan | Feb. 23, 2018
 RBI _____ 5 vs Manhattan | Feb. 23, 2018
 Runs _____ *2 vs Ole Miss | April 29, 2018
 Walks _____ *2 vs #23 Nebraska | March 19, 2016
 AB _____ *4 at #11 Auburn | April 21, 2018

Year	Avg	GP	GS	AB	R	H	2B	3B	HR	RBI	BB	SO	SB	ATT
2016	.138	29	8	29	9	4	1	0	1	4	6	11	0	0
2017	.222	38	16	45	12	10	2	0	2	4	4	20	1	2
2018	.278	45	45	108	24	30	5	2	4	17	11	19	2	3
TOTAL	.242	112	69	182	45	44	8	2	7	25	21	50	3	5

#6 Tori Cooper

Senior | OF | 5-5 | L/L | Nederland, Texas (Nederland)

Season Highs

Hits _____ *2 vs Ole Miss | April 30, 2018
 RBI _____ 4 at Saint Louis | April 10, 2018
 Runs _____ 3 vs Missouri State | Feb. 28, 2018
 Walks _____ *2 at #12 South Carolina | April 8, 2018
 AB _____ 5 at #11 Auburn | April 21, 2018

Career Highs

Hits _____ *3 at #9 Alabama | March 12, 2017
 RBI _____ 6 vs San Diego | Feb. 19, 2017
 Runs _____ *3 vs Missouri State | Feb. 28, 2018
 Walks _____ *2 at #12 South Carolina | April 8, 2018
 AB _____ *5 at #11 Auburn | April 21, 2018

Year	Avg	GP	GS	AB	R	H	2B	3B	HR	RBI	BB	SO	SB	ATT
2015	.258	39	27	62	12	16	3	0	1	5	5	16	2	2
2016	.287	47	33	108	12	31	6	0	3	11	7	25	0	0
2017	.285	53	50	151	30	43	3	2	10	40	19	35	0	0
2018	.236	38	37	106	19	25	4	0	3	16	12	17	1	1
TOTAL	.269	177	147	427	73	115	16	2	17	72	43	93	3	3

#18 Ashley Diaz

Junior | INF | 5-10 | R/R | South El Monte, Calif. (South El Monte)

Season Highs

Hits _____ *3 vs Saint Francis (Pa.) | March 16, 2018
 RBI _____ 5 vs Saint Francis (Pa.) | March 16, 2018
 Runs _____ *2 vs Dartmouth | March 2, 2018
 Walks _____ *2 vs UT Arlington | March 20, 2018
 AB _____ *4 vs Ole Miss | April 28, 2018

Career Highs

Hits _____ *3 vs Saint Francis (Pa.) | March 16, 2018
 RBI _____ 5 vs Saint Francis (Pa.) | March 16, 2018
 Runs _____ *2 vs Dartmouth | March 2, 2018
 Walks _____ *2 vs UT Arlington | March 20, 2018
 AB _____ *5 at #9 Alabama | March 12, 2017

Year	Avg	GP	GS	AB	R	H	2B	3B	HR	RBI	BB	SO	SB	ATT
2016	.331	53	53	160	22	53	3	0	12	41	15	32	1	1
2017	.283	55	55	159	12	45	6	1	3	21	10	24	0	0
2018	.301	47	46	136	17	41	6	0	6	28	12	14	0	0
TOTAL	.305	155	154	455	51	139	15	1	21	90	37	70	1	1

#13 Kayla Green

Freshman | C | 5-9 | R/R | Temecula, Calif. (Great Oak HS)

Season Highs

Hits _____ *2 vs Ole Miss | April 30, 2018
 RBI _____ 4 vs #15 Alabama | April 13, 2018
 Runs _____ *2 vs #20 Mississippi State | March 31, 2018
 Walks _____ 2 vs #20 Mississippi State | April 1, 2018
 AB _____ *4 at #11 Auburn | April 21, 2018

Career Highs

Hits _____ *2 vs Ole Miss | April 29, 2018
 RBI _____ 4 vs #15 Alabama | April 13, 2018
 Runs _____ *2 vs #20 Mississippi State | March 31, 2018
 Walks _____ 2 vs #20 Mississippi State | April 1, 2018
 AB _____ *4 at #11 Auburn | April 21, 2018

Year	Avg	GP	GS	AB	R	H	2B	3B	HR	RBI	BB	SO	SB	ATT
2018	.260	47	47	131	19	34	11	1	6	26	9	22	0	0
TOTAL	.260	47	47	131	19	34	11	1	6	26	9	22	0	0

#12 Loren Krzysko

RS Senior | OF | 5-3 | R/R | Barrington, Ill. (Barrington)

Season Highs

Hits _____ *3 vs UT Arlington | March 20, 2018
 RBI _____ 4 vs Omaha | March 18, 2018
 Runs _____ *2 vs UT Arlington | March 20, 2018
 Walks _____ *2 vs Ole Miss | April 28, 2018
 AB _____ *4 at #11 Auburn | April 21, 2018

Career Highs

Hits _____ *3 vs UT Arlington | March 20, 2018
 RBI _____ 4 vs Omaha | March 18, 2018
 Runs _____ 3 at Notre Dame | April 29, 2017
 Walks _____ *2 vs Ole Miss | April 28, 2018
 AB _____ *4 at #11 Auburn | April 21, 2018

Year	Avg	GP	GS	AB	R	H	2B	3B	HR	RBI	BB	SO	SB	ATT
2015	.182	31	21	55	5	10	3	0	0	9	10	11	0	2
2016	.205	46	26	78	8	16	4	0	1	7	8	15	1	2
2017	.339	25	19	59	13	20	3	1	2	10	7	8	0	0
2018	.242	48	48	128	22	31	5	0	6	21	20	19	1	1
TOTAL	.241	150	114	320	48	77	15	1	9	47	45	53	2	5

#22 Linnie Malkin

Freshman | INF | 5-11 | R/R | Broomfield, Colo. (Broomfield)

Season Highs

Hits _____ *2 vs McNeese | Feb. 25, 2018
 RBI _____ 3 vs Grand Canyon | Feb. 17, 2018
 Runs _____ *2 vs Villanova | Feb. 24, 2018
 Walks _____ 2 vs Villanova | Feb. 24, 2018
 AB _____ 4 vs Marist | Feb. 23, 2018

Career Highs

Hits _____ *2 vs McNeese | Feb. 25, 2018
 RBI _____ 3 vs Grand Canyon | Feb. 17, 2018
 Runs _____ *2 vs Villanova | Feb. 24, 2018
 Walks _____ 2 vs Villanova | Feb. 24, 2018
 AB _____ 4 vs Marist | Feb. 23, 2018

Year	Avg	GP	GS	AB	R	H	2B	3B	HR	RBI	BB	SO	SB	ATT
2018	.293	21	14	41	8	12	2	0	3	8	10	11	0	0
TOTAL	.293	21	14	41	8	12	2	0	3	8	10	11	0	0

#66 Aly Manzo

Sophomore | INF | 5-7 | L/R | Roseville, Calif. (Roseville)

Season Highs

Hits _____ *2 vs Iowa State | March 16, 2018
 RBI _____ 3 vs Saint Francis (Pa.) | March 16, 2018
 Runs _____ *1 vs UT Arlington | March 20, 2018
 Walks _____ *1 vs #15 Alabama | April 13, 2018
 AB _____ *4 vs UT Arlington | March 20, 2018

Career Highs

Hits _____ *2 vs Iowa State | March 16, 2018
 RBI _____ 3 vs Saint Francis (Pa.) | March 16, 2018
 Runs _____ *1 vs UT Arlington | March 20, 2018
 Walks _____ *1 vs #15 Alabama | April 13, 2018
 AB _____ *4 vs UT Arlington | March 20, 2018

Year	Avg	GP	GS	AB	R	H	2B	3B	HR	RBI	BB	SO	SB	ATT
2017	.000	2	0	1	1	0	0	0	0	0	0	1	0	0
2018	.278	27	16	54	7	15	3	1	1	7	7	3	1	1
TOTAL	.273	29	16	55	8	15	3	1	1	7	7	4	1	1

#23 Hannah McEwen

Freshman | OF | 5-7 | L/R | San Diego, Calif. (Patrick Henry HS)

Season Highs

Hits _____ *3 vs Ole Miss | April 28, 2018
 RBI _____ 5 vs Marist | Feb. 23, 2018
 Runs _____ 3 vs Marist | Feb. 23, 2018
 Walks _____ 3 vs #20 Mississippi State | April 1, 2018
 AB _____ *5 at #11 Auburn | April 21, 2018

Career Highs

Hits _____ *3 vs Ole Miss | April 28, 2018
 RBI _____ 5 vs Marist | Feb. 23, 2018
 Runs _____ 3 vs Marist | Feb. 23, 2018
 Walks _____ 3 vs #20 Mississippi State | April 1, 2018
 AB _____ *5 at #11 Auburn | April 21, 2018

Year	Avg	GP	GS	AB	R	H	2B	3B	HR	RBI	BB	SO	SB	ATT
2018	.370	48	48	154	40	57	7	1	10	51	18	12	0	0
TOTAL	.370	48	48	154	40	57	7	1	10	51	18	12	0	0

#7 Sydney Parr

Sophomore | OF | 5-7 | L/R | North Little Rock, Ark. (North Little Rock)

Season Highs

Hits _____ *2 vs Omaha | March 18, 2018
 RBI _____ 3 vs Villanova | Feb. 24, 2018
 Runs _____ *2 vs Omaha | March 17, 2018
 Walks _____ 2 vs Omaha | March 17, 2018
 AB _____ *3 vs UT Arlington | March 20, 2018

Career Highs

Hits _____ *2 vs Omaha | March 18, 2018
 RBI _____ 3 vs Villanova | Feb. 24, 2018
 Runs _____ *2 vs Omaha | March 17, 2018
 Walks _____ 2 vs Omaha | March 17, 2018
 AB _____ *3 vs UT Arlington | March 20, 2018

Year	Avg	GP	GS	AB	R	H	2B	3B	HR	RBI	BB	SO	SB	ATT
2017	.000	36	0	0	10	0	0	0	0	2	0	1	1	1
2018	.275	36	15	40	13	11	1	1	0	5	5	4	4	4
TOTAL	.275	72	15	40	23	11	1	1	0	5	7	4	5	5

#55 Katie Warrick

Junior | RHP/INF | 6-0 | R/R | Chapel Hill, Tenn. (UT Martin)

Season Highs

Hits _____ 4 vs Iowa State | March 16, 2018
 RBI _____ *4 vs #20 Mississippi State | April 1, 2018
 Runs _____ *2 vs UT Arlington | March 20, 2018
 Walks _____ *1 vs Ole Miss | April 30, 2018
 AB _____ *4 vs #15 Alabama | April 13, 2018

Career Highs

Hits _____ 4 vs Iowa State | March 16, 2018
 RBI _____ *4 vs #20 Mississippi State | April 1, 2018
 Runs _____ *2 vs UT Arlington | March 20, 2018
 Walks _____ 2 at North Texas | Feb. 12, 2017
 AB _____ *4 vs #15 Alabama | April 13, 2018

Year	Avg	GP	GS	AB	R	H	2B	3B	HR	RBI	BB	SO	SB	ATT
2017	.253	36	33	87	11	22	3	0	6	16	7	14	0	0
2018	.319	34	30	94	12	30	6	0	8	22	11	7	0	0
TOTAL	.287	70	63	181	23	52	9	0	14	38	18	21	0	0

#4 Mary Haff

Freshman | RHP | 5-10 | R/R | Winter Haven, Fla. (Lake Region HS)

Season Highs

Innings _____ 8.0 at #11 Georgia | March 12, 2018
 Strikeouts _____ 13 at Saint Louis | April 10, 2018
 Walks _____ 4 vs Northern Colorado | March 2, 2018
 Runs Allowed _____ 5 (5 ER) at #11 Auburn | April 20, 2018
 No. of Pitches _____ 132 vs #20 Mississippi State | March 30, 2018

Career Highs

Innings _____ 8.0 at #11 Georgia | March 12, 2018
 Strikeouts _____ 13 at Saint Louis | April 10, 2018
 Walks _____ 4 vs Northern Colorado | March 2, 2018
 Runs Allowed _____ 5 (5 ER) at #11 Auburn | April 20, 2018
 No. of Pitches _____ 132 vs #20 Mississippi State | March 30, 2018

Year	ERA	W	L	App	GS	CG	SHO	CBO	SV	IP	H	R	ER	BB	SO
2018	1.34	24	4	35	25	15	9	1	2	167.1	79	38	32	28	211
TOTAL	1.34	24	4	35	25	15	9	1	2	167.1	79	38	32	28	211

#31 Caroline Hedcock

Sophomore | LHP | 5-8 | R/L | Downers Grove, Ill. (South HS)

Season Highs

Innings _____ 3.0 vs Iowa State | March 16, 2018
 Strikeouts _____ 4 at #11 Georgia | March 10, 2018
 Walks _____ 3 at #11 Auburn | April 20, 2018
 Runs Allowed _____ 6 (5 ER) at #11 Auburn | April 20, 2018
 No. of Pitches _____ 69 at #11 Auburn | April 20, 2018

Career Highs

Innings _____ 7.0 vs Tulsa | April 11, 2017
 Strikeouts _____ 5 vs #2 Florida | March 31, 2017
 Walks _____ *3 at #11 Auburn | April 20, 2018
 Runs Allowed _____ 6 (5 ER) at #11 Auburn | April 20, 2018
 No. of Pitches _____ 95 at #9 Oklahoma | April 5, 2017

Year	ERA	W	L	App	GS	CG	SHO	CBO	SV	IP	H	R	ER	BB	SO
2017	2.84	3	5	25	8	2	0	2	0	61.2	51	33	25	19	31
2018	9.73	1	0	9	1	0	0	0	1	13.2	27	23	19	8	10
TOTAL	4.09	4	5	34	9	2	0	2	1	75.1	78	56	44	27	41

#9 Autumn Storms

Sophomore | RHP | 5-10 | R/R | Temecula, Calif. (Greak Oak HS)

Season Highs

Innings _____ *7.0 at Saint Louis | April 10, 2018
 Strikeouts _____ 9 vs C. Connecticut State | March 3, 2018
 Walks _____ 3 vs #15 Alabama | April 13, 2018
 Runs Allowed _____ 6 (5 ER) vs #15 Alabama | April 13, 2018
 No. of Pitches _____ 117 vs UT Arlington | March 20, 2018

Career Highs

Innings _____ 8.1 at #9 Alabama | March 12, 2017
 Strikeouts _____ 9 vs C. Connecticut State | March 3, 2018
 Walks _____ 5 at #9 Alabama | March 12, 2017
 Runs Allowed _____ 6 (5 ER) vs #15 Alabama | April 13, 2018
 No. of Pitches _____ 159 at #9 Alabama | March 12, 2017

Year	ERA	W	L	App	GS	CG	SHO	CBO	SV	IP	H	R	ER	BB	SO
2017	2.28	16	15	38	33	13	1	3	2	172.0	174	81	56	35	96
2018	2.08	12	7	30	22	6	3	1	2	131.0	128	51	39	26	102
TOTAL	2.19	28	22	68	55	19	4	4	4	303.0	302	132	95	61	198

#55 Katie Warrick

Junior | RHP/INF | 6-0 | R/R | Chapel Hill, Tenn. (UT Martin)

Season Highs

Innings _____ 2.2 vs Loyola Marymount | Feb. 18, 2018
 Strikeouts _____ *1 at #11 Auburn | April 20, 2018
 Walks _____ *1 vs Saint Francis (Pa.) | March 16, 2018
 Runs Allowed _____ 3 (2 ER) vs Saint Francis (Pa.) | March 16, 2018
 No. of Pitches _____ 34 vs Saint Francis (Pa.) | March 16, 2018

Career Highs

Innings _____ *4.2 vs Lamar | March 4, 2017
 Strikeouts _____ 4 vs Lamar | March 4, 2017
 Walks _____ 2 at #17 Kentucky | March 25, 2017
 Runs Allowed _____ 4 (1 ER) vs #2 Florida | April 1, 2017
 No. of Pitches _____ 54 vs Lamar | March 4, 2017

Year	ERA	W	L	App	GS	CG	SHO	CBO	SV	IP	H	R	ER	BB	SO
2017	3.68	3	0	14	0	0	0	1	0	26.2	33	17	14	5	10
2018	3.50	0	0	4	0	0	0	0	0	6.0	9	5	3	2	2
TOTAL	3.64	3	0	18	0	0	0	1	0	32.2	42	22	17	7	12



00 CARLEY HAIZLIP
JR | OF | 5-8 | L/R
Midlothian, Texas



2 A.J. BELANS
SR | INF | 5-5 | R/R
Hollywood, Fla.



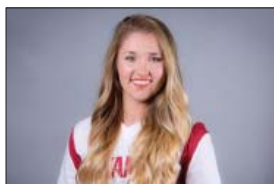
4 MARY HAFF
FR | RHP | 5-10 | R/R
Winter Haven, Fla.



6 TORI COOPER
SR | OF | 5-5 | L/L
Nederland, Texas



7 SYDNEY PARR
SO | OF | 5-7 | L/L
North Little Rock, Ark.



8 AUTUMN BUCZEK
SR | INF | 5-7 | L/R
Greenbrier, Ark.



9 AUTUMN STORMS
SO | RHP | 5-10 | R/R
Temecula, Calif.



10 HAYDI BUGARIN
JR | OF | 5-3 | R/R
San Antonio, Texas



12 LOREN KRZYSKO
R-SR | OF | 5-3 | R/R
Barrington, Ill.



13 KAYLA GREEN
FR | C | 5-9 | R/R
Temecula, Calif.



16 KEELY EDWARDS
SO | INF | 5-9 | R/R
Harrisburg, Ark.



18 ASHLEY DIAZ
JR | INF | 5-10 | R/R
South El Monte, Calif.



19 LAUREN ARCHULETA
R-JR | C | 5-8 | R/R
Rockwall, Texas



20 MACY BROTHERTON
SO | C | 5-9 | R/R
Mena, Ark.



22 LINNIE MALKIN
FR | INF | 5-11 | R/R
Broomfield, Colo.



23 HANNAH McEWEN
FR | OF | 5-7 | L/R
San Diego, Calif.



24 NICOLE DUNCAN
FR | C | 5-7 | R/R
Centralia, Mo.



28 SYDNEY BENZ
JR | INF | 5-5 | R/R
Carol Stream, Ill.



31 CAROLINE HEDGCOCK
SO | LHP | 5-8 | R/L
Downers Grove, Ill.



32 ALLISON STEWART
R-JR | RHP | 5-11 | R/R
Olathe, Kan.



33 JADA DOTSON
FR | OF | 5-6 | R/R
White House, Tenn.



34 MADELYN BROTHERTON
SO | INF | 5-9 | R/R
Mena, Ark.



55 KATIE WARRICK
JR | UTL | 6-0 | R/R
Chapel Hill, Tenn.



66 ALY MANZO
SO | INF | 5-7 | R/R
Roseville, Calif.



COURTNEY DEIFEL
Head Coach
3rd Season



YOLANDA McRAE
Assistant Coach
3rd Season



MATT MEUCHEL
Assistant Coach
2nd Season



JORDAN CLARK
Volunteer Assistant Coach
3rd Season