



# RAZORBACKS

Jeri Thorpe | Associate Communications Director  
P: 479-283-3344 | E: jthorpe@uark.edu | ArkansasRazorbacks.com

## 2018-19 ARKANSAS WOMEN'S BASKETBALL

### THE SCHEDULE | 4-2, 0-0 SEC

Date	Opponent	Time/TV	TV
Oct. 29	Southwest Baptist (Exh.)	7 p.m.	W, 115-53
Nov. 1	East Central Univ. (Exh.)	7 p.m.	W, 101-46
Nov. 9	Northwestern St. (Elem. Day)	SECN+	W, 98-53
Nov. 14	at UT Arlington	ESPN+	W, 66-65
Nov. 18	No. 22 Arizona State	SECN	L, 85-83
Nov. 23	vs. Tennessee State-I	7:30 p.m.	W, 79-55
Nov. 24	vs. Pittsburgh-I	7:30 p.m.	L, 61-54
Nov. 25	vs. Wisconsin-I	7:30 p.m.	W, 69-68
Nov. 28	Oral Roberts	7 p.m.	SECN+
Dec. 2	at Iowa State^	2 p.m.	-
Dec. 4	Tennessee Tech	7 p.m.	SECN+
Dec. 8	at Abilene Christian	1 p.m.	-
Dec. 16	Prairie View A&M	2 p.m.	SECN+
Dec. 18	Nebraska	7 p.m.	SECN+
Dec. 20	at Tulsa	2 p.m.	CST
Dec. 30	Jackson State	2 p.m.	SECN+
Jan. 3	Mississippi State*	6 p.m.	SECN
Jan. 6	at Ole Miss*	2 p.m.	SECN
Jan. 10	at Missouri*	7 p.m.	SECN+
Jan. 13	Vanderbilt*	2 p.m.	SECN+
Jan. 21	at Tennessee*	6 p.m.	SECN
Jan. 24	Alabama* (We Back Pat)	7 p.m.	SECN+
Jan. 27	at Florida*	1 p.m.	SECN+
Jan. 31	Georgia*	7 p.m.	SECN+
Feb. 3	South Carolina*	4 p.m.	SECN
Feb. 7	at LSU*	8 p.m.	SECN
Feb. 10	Auburn* (Play4Kay)	1 p.m.	SECN
Feb. 17	at Kentucky*	1 p.m.	SECN+
Feb. 21	at Georgia*	6 p.m.	SECN+
Feb. 24	Ole Miss* (Senior Day)	3 p.m.	SECN
Feb. 28	Missouri*	8 p.m.	SECN
March 3	at Texas A&M*	4 p.m.	SECN
March 6-10	SEC Championship	TBA	SECN, ESPN
!-Music City Thanksgiving Challenge ^-Big 12/SEC Challenge			
*-SEC Contest			

### GAME 7 | Oral Roberts (3-3) | Nov. 28 | Fayetteville, Ark. (Bud Walton Arena)



#### SERIES

Overall	20-9
SEC	0-0
In Fayetteville	15-2
Away	5-7
Neutral	0-0
Postseason	NA

#### ARKANSAS RAZORBACKS

PTS / GAME	75.2
PTS ALLOWED / GAME	65.0
FG %	.405
FG DEFENSE %	.389
3-PT FG %	.311
3-PT FG DEFENSE %	.311
REB / GAME	40.0
REB ALLOWED / GAME	43.0
LEADING SCORER	Dungee, 15.5
LEADING REBOUNDER	Williams, 7.8
LEADER IN ASSISTS	Monk, 17
HEAD COACH	Mike Neighbors
ARKANSAS RECORD	17-20 (2)
CAREER RECORD	115-61 (6)

#### ORAL ROBERTS GOLDEN EAGLES

PTS / GAME	72.2
PTS ALLOWED / GAME	68.3
FG %	.397
FG DEFENSE %	.268
3-PT FG %	.690
3-PT FG DEFENSE %	.746
REB / GAME	34.5
REB ALLOWED / GAME	39.8
LEADING SCORER	Beatty, 15.3
LEADING REBOUNDER	Brottons, 4.8
LEADER IN ASSISTS	Beatty, 19
HEAD COACH	Misti Cussen
SCHOOL RECORD	94-96 (8)
CAREER RECORD	94-96 (8)

#### LAST FIVE MEETINGS

11/19/2012	W	80-57	Tulsa
11/13/2013	W	91-33	Fayetteville
12/10/2015	W	65-50	Fayetteville
12/21/2016	L	70-60	Fayetteville
11/20/2017	W	77-66	Tulsa

### STORYLINES

#### A LOT OF OFFENSE

- Arkansas has three players averaging double digits paced by redshirt sophomore Chelsea Dungee at 15.5 points per game. Junior college transfer Alexis Tolefree is second on the team with 15.0 ppg followed by senior Malica Monk with 12.3 ppg.
- Chelsea Dungee has scored in double figures in all six games. Tolefree and Monk have been in double-digits in five of the six games.
- Dungee ranks 10th in the SEC followed by Tolefree in a T-13 and Monk at No. 30 in the league.
- Arkansas ranks sixth in the SEC averaging 75.2 points per game.
- Tolefree ranks T-2 in the SEC averaging 3.0 3-pointers per game. She is 11th in 3-point field goal percentage at .310.

#### FUNCTIONALLY FAST

- Play fast and don't turn it over is Arkansas' motto this year.
- Possessions are important. Arkansas has taken 546 shots (390 FG+156 FT) with 252 (154 FG+98 FT) makes.
- Arkansas has turned the ball over only 80 times - a little more than Coach Neighbors would like but getting better each game.

#### NAIL-BITER TIMES TWO

- A'Tyanna Gaulden tipped an in-bounds pass by Wisconsin with 4.7 seconds left in the game and Arkansas trailing by one. The tip fell into the hands of Malica Monk who broke to the basket and laid it in for the game-winning score at the Challenge in Music City.
- Alexis Tolefree received the inbounds pass from Jailyne Mason with just over three seconds remaining in the game at UTA. Trailing by one point, Tolefree made a move, took a couple of power dribbles and put up a jumper that rattled around the rim before falling in for the thrilling victory.

### FOLLOW, WATCH & LISTEN



@RAZORBACKWBB

TV: SECN+: <http://bit.ly/ArkORUWBB>

Talent: Brett Dolan and Manny Watkins

Live Scoring: <http://statb.us/e/233633>

Razorback Sports Network from IMG (Radio)

Phil Elson & Erin Portman

Fayetteville - KQSM-FM-92.1 /// KYNG-AM - 1590\*

Fort Smith - KFPW-AM-1230 /// KHGG-AM-1580\*

Rogers - KURM-AM-790 /// FM-100.3

\*If there are conflicts on the FM station

### THE LINEUP (last game starters)

ALEXIS TOLEFREE



Jr | Conway, Ark.

2 PPG FG% RPG 3-PT  
15.0 .309 3.5 18

MALICA MONK



Sr | N. Little Rock, Ark.

3 PPG FG% RPG Ast  
12.3 .409 3.0 17

KIARA WILLIAMS



Jr | Little Rock, Ark.

10 PPG FG% RPG MIN  
7.7 .571 7.8 21.0

JAILYNE MASON



Jr | Mason, Ohio

14 PPG FG% RPG Ast  
6.0 .359 3.2 13

CHELSEA DUNGEE



RSO | Sapulpa, Okla.

33 PPG FG% RPG FT%  
15.5 .460 4.0 .735

## 2018-19 @RAZORBACKWBB

### NUMERICAL

NO.	NAME	POS	HT	CL	HOMETOWN/PREVIOUS SCHOOL	TWITTER
0	A'Tyanna Gaulden	G	5-7	RSo	Ocilla, Ga./Americus Sumter HS/Florida State	@AtyannaGaulden
1	Raven Northcross-Baker	G	5-9	Sr	Malvern, Ark./Malvern HS/Chipola College	@ravenbaker_4
2	Alexis Tolefree	G	5-8	Jr	Conway, Ark./Conway HS/Jones County JC	@a2smooth_
3	Malica Monk	G	5-5	Sr	N. Little Rock, Ark./NLR HS	@TheRealMalica
10	Kiara Williams	C	6-1	Jr	Little Rock, Ark./LR Central HS	@kiara_will22
13	Grayce Spangler	G	5-10	So	Fayetteville, Ark. Fayetteville HS	@grayce_1313
14	Jailyn Mason	PG	5-9	Jr	Mason, Ohio/William Mason HS	@UofAjbmason
20	Sydney Stout	F	6-0	Jr	Bixby, Okla./Bixby HS	@sydeny_stout_
22	Bailey Zimmerman	F	6-0	Sr	St. Vincent, Ark. /Wonderview HS	@Bailey_Ann22
23	Amber Ramirez*	G	5-9	Jr	San Antonio, Texas/Wagner HS/TCU	@yungram_
24	Taylah Thomas	F	6-1	So	Arlington, Texas/Mansfield Timberview HS	@hailtaylahh
30	Macy Weaver	F	6-3	So	Davis Junction, Ill./Stillman Valley HS	@macyweaver528
33	Chelsea Dungee	G	5-11	RSo	Sapulpa, Okla./Sapulpa HS/Oklahoma	@ChelseaDungee22
52	Rokia Doumbia	G	5-9	Fr	Bradenton, Fla./IMG Academy/Mali, Africa	@23RokiaDoumbia

\*Will redshirt due to NCAA transfer rules

### COACHING STAFF

Title	Name	Year	Alma Mater
Head Coach	Mike Neighbors	2nd Season	Arkansas, 1993
Assistant Coach	Todd Schaefer	2nd Season	Thomas More College, 1995
Assistant Coach	Lacey Goldwire	2nd Season	Oklahoma State, 2010
Assistant Coach	Pauline Love	2nd Season	Southern Miss, 2010
Director of Operations	Amber Shirey	31st Season	Arkansas, 1992
Director of Video and Scouting	Jeff Brazil	12th Season	Arkansas, 2010
Dir. of Student-Athlete Devel.	C'eira Ricketts	2nd Season	Arkansas, 2015

### ELIGIBILITY

#### Seniors (3)

Raven Northcross-Baker  
Malica Monk  
Bailey Zimmerman

#### Juniors (5)

Alexis Tolefree  
Jailyn Mason  
Amber Ramirez\*  
Sydney Stout  
Kiara Williams

#### Sophomores (5)

Chelsea Dungee  
A'Tyanna Gaulden  
Grayce Spangler  
Taylah Thomas  
Macy Weaver

#### Freshmen (1)

Rokia Doumbia

### ALPHABETICAL

NO.	NAME	POS	HT	CL	MAJOR
52	Rokia Doumbia	G	5-9	Fr	Pre-Business
33	Chelsea Dungee	G	5-11	R-So	Communication
0	A'Tyanna Gaulden	G	5-7	R-So	Apparel Merchandise & Product Development
14	Jailyn Mason	PG	5-9	Jr	Journalism: News/Editorial
3	Malica Monk	G	5-5	Sr	Recreation & Sport Management
1	Raven Northcross-Baker	G	5-9	Sr	Criminal Justice and Sociology
23	Amber Ramirez	G	5-9	Jr	Criminal Justice
13	Grayce Spangler	G	5-11	So	Journalism: Broadcast
20	Sydney Stout	F	6-0	Jr	Marketing
24	Taylah Thomas	F	6-1	So	Nursing/Public Health
2	Alexis Tolefree	G	5-8	Jr	Sociology
30	Macy Weaver	F	6-3	So	Supply Chain Management
10	Kiara Williams	C	6-1	Jr	Communication
22	Bailey Zimmerman	F	6-0	Sr	Apparel Merchandise & Product Development

### BY STATE

#### ARKANSAS

Malica Monk N. Little Rock  
Raven Northcross-Baker Malvern  
Grayce Spangler Fayetteville  
Alexis Tolefree Conway  
Kiara Williams Little Rock  
Bailey Zimmerman St. Vincent

#### GEORGIA

A'Tyanna Gaulden Ocilla

#### ILLINOIS

Macy Weaver Davis Junction

#### OHIO

Jailyn Mason Mason

#### OKLAHOMA

Chelsea Dungee Sapulpa  
Sydney Stout Bixby

#### TEXAS

Amber Ramirez San Antonio  
Taylah Thomas Arlington

#### AFRICA

Rokia Doumbia Mali

### FA-NETIK

#### PRONUNCIATIONS

0 A'Tyanna AH-tee-ah-nuh  
3 Malica mal-ick-cuh  
10 Kiara KEY-ARE-uh  
13 Grayce GRACE  
14 Jailyn JAY-lyn  
23 Rokia Doumbia ro-KEY-uh  
DOOM-b-uh  
24 Taylah TAI-lah

## THE SOUTHEASTERN CONFERENCE (Nov. 26, 2018)

Team	SEC				Overall					
	W-L	Pct.	H	A	W-L	Pct.	H	A	N	Strk
Kentucky	0-0	.000	0-0	0-0	7-0	1.000	4-0	0-0	3-0	W7
Mississippi State	0-0	.000	0-0	0-0	6-0	1.000	5-0	1-0	0-0	W6
Tennessee	0-0	.000	0-0	0-0	5-0	1.000	3-0	0-0	2-0	W5
Alabama	0-0	.000	0-0	0-0	4-1	.800	3-0	1-1	0-0	W3
Auburn	0-0	.000	0-0	0-0	4-1	.800	3-0	1-1	0-0	W1
LSU	0-0	.000	0-0	0-0	4-1	.800	3-1	0-0	0-0	W1
Texas A&M	0-0	.000	0-0	0-0	4-1	.800	3-0	1-1	0-0	W2
Missouri	0-0	.000	0-0	0-0	5-2	.714	2-1	1-0	2-1	W2
Arkansas	0-0	.000	0-0	0-0	4-2	.667	1-1	1-0	2-1	W1
Georgia	0-0	.000	0-0	0-0	3-3	.500	2-0	1-2	1-1	L1
South Carolina	0-0	.000	0-0	0-0	3-3	.500	1-1	1-0	1-2	L2
Ole Miss	0-0	.000	0-0	0-0	3-4	.429	3-1	0-0	0-3	L3
Vanderbilt	0-0	.000	0-0	0-0	3-4	.439	3-2	0-2	0-0	W2
Florida	0-0	.000	0-0	0-0	0-5	.000	0-2	0-3	0-0	L5

2019 SEC Women's Basketball Tournament  
March 6 - 10 • Greenville, SC  
Bon Secours Wellness Arena

Wednesday, March 6		
Game 1	Seed #12 vs. Seed #13	TBD
Game 2	Seed #11 vs. Seed #14	TBD
Thursday, March 7		
Game 3	Seed #8 vs. Seed #9	TBD
Game 4	Game 2 winner vs. Seed #5	TBD
Game 5	Seed #10 vs. Seed #7	TBD
Game 6	Game 2 winner vs. Seed #6	TBD
Friday, March 8		
Game 7	Game 3 winner vs. Seed #1	TBD
Game 8	Game 4 winner vs. Seed #4	TBD
Game 9	Game 5 winner vs. Seed #2	TBD
Game 10	Game 6 winner vs. Seed #3	TBD
Saturday, March 9		
Game 11	Game 7 winner vs. Game 8 winner	TBD
Game 12	Game 9 winner vs. Game 10 winner	TBD
Sunday, March 10		
Final	Game 11 winner vs. Game 12 winner	TBD

## OPPONENT

- ORU enters the game with a 3-3 record and has won two games in a row over UMKC and Texas State.
- ORU suffered a 76-68 loss to Tulsa. The Razorbacks travel to Tulsa on Dec. 20 in the final game before the holiday.
- Lakota Beatty is one of four Golden Eagles averaging double figures. She leads ORU with 15.3 points per game.
- The other double-digit scorers include KeniJo Lippe with 12.0 ppg, Maya Mayberry with 10.5 ppg and Rylie Torrey at 10.2 ppg.
- ORU is outscoring opponents by 3.9 ppg but has a -5.3 rebounding margin, having been out-rebounded 156-144 this season.
- ORU is good in the third quarter and has outscored opponents 132-99 in that frame.
- Conversely, the Razorbacks have been outscored in the 3Q in four of six games and 119-107 on the year.

## LAST MEETING

- Arkansas picked up a 77-66 win over ORU in Tulsa last year.
- It was a slow starting offensive game for both teams and Arkansas had to come from behind to get the win.
- Malica Monk scored 24 points and Devin Cosper added 21 points and 10 boards for Arkansas.
- Arkansas won the fourth quarter, outscoring ORU 21-17 to complete the win.
- ORU had four players in double figures led by Faith Ihim with 13 points. Sarah Garvie added 12 points, with 11 points each from Maria Martianez and Montserrat Brotons. Garvie and Brotons return for ORU this season.
- The Razorbacks took great care of the ball with just four turnovers in the last meeting. They forced 14 ORU miscues.

## SERIES RECORDS

OPPONENT	SERIES	H	A	N	LAST	NEIGHBORS   AT UA
Northwestern State	14-3	10-0	0-3	4-0	H - W   98-53 (11/9/2018)	1-0   1-0
at UT-Arlington	8-0	3-0	3-0	1-0	A - W   66-65 (11/14/2018)	2-0   2-0
Arizona State	1-1	0-1	1-1	0-0	H - L   88-85 (11/18/18)	2-6   0-2
Tennessee State-1	2-0	1-0	0-0	1-0	H - W   71-50 (11/23/2010)	First Meeting
Pittsburgh-1	1-0	0-0	0-0	1-0	N - W   76-75 (11/25/1994)	1-0   0-0
Wisconsin-1	1-0	1-0	0-0	0-0	H - W   67-64 (3/23/1999)	1-0   0-0
Oral Roberts	20-9	15-2	5-7	0-0	A - W   77-66 (11/20/2017)	1-0   1-0
at Iowa State-1	1-1	1-0	0-1	0-0	A - L   71-60 (12/20/1980)	First Meeting
Tennessee Tech	1-1	1-0	0-1	0-0	H - W   79-53 (12/20/2013)	First Meeting
at Abilene Christian	1-0	1-0	0-0	0-0	H - W   79-65 (11/29/2017)	1-0   1-0
Prairie View A&M	1-0	0-0	0-0	1-0	N - W   48-45 (12/10/1979)	First Meeting
Nebraska	0-1	0-0	0-1	0-0	A - L   80-69 (11/6/2017)	0-1   0-1
at Tulsa	21-3	1-2	11-1	0-0	A - W   67-41 (12/10/2017)	1-0   1-0
Jackson State	3-0	3-0	0-0	0-0	H - W   97-58 (11/9/2012)	First Meeting
Alabama	22-15	11-6	10-7	1-2	A - W   74-66 (2/4/2018)	1-1   1-1
Auburn	15-22	8-9	6-11	1-2	A - W   68-58 (1/14/2018)	1-0   1-0
Florida	9-28	5-11	3-12	1-5	H - L   65-51 (1/18/2018)	0-1   0-1
Georgia	5-32	3-15	2-16	0-1	A - L   78-65 (1/11/2018)	0-1   0-1
Kentucky	13-23	9-7	3-13	1-2	A - L   78-57 (2/15/2018)	1-2   0-2
LSU	16-32	9-14	7-15	0-3	H - L   62-57 (2/18/2018)	0-1   0-1
Ole Miss	17-26	12-5	2-16	3-5	H - W   73-72 (12/3/2017)	1-0   1-0
Mississippi State	18-19	10-6	6-11	2-2	A - L   111-69 91/4/2018)	0-2   0-1
Missouri	11-10	6-3	4-7	1-0	H - L 84-58 (2/12/2018)	1-2   0-2
South Carolina	17-17	10-6	5-10	2-1	A - L   90-42 (1/25/2018)	0-1   0-1
Tennessee	3-31	2-14	1-14	0-2	H - L   90-85 (2/8/2018)	0-1   0-1
Texas A&M	21-10	11-3	8-5	2-2	N - L   82-52 (3/1/2018)	1-3   0-2
Vanderbilt	9-25	7-8	1-16	1-1	N - W   88-76 (2/28/2018)	1-1   1-1

## UNDER 10

- Arkansas has played four of its six games to an under-10 point margin.
- The Razorbacks have won two games by a single point (UT-Arlington, Wisconsin).
- Arkansas lost to No. 22 Arizona State by one possession, three points.
- Arkansas lost on a neutral site to Pitt by seven points.

## IN COMPARISON

- Arkansas has led three of its six games at the half.
- Arkansas has outscored opponents in the second half in four games and tied them once.
- Arkansas has made more free throws than its opponents in four games and had the same number of makes once.
- The Razorbacks have committed 10 or fewer turnovers twice (1-1) and had fewer miscues than their opponents in five games (3-2).
- Arkansas has had double-figure steals in five games.

## DOUBLING UP

- Chelsea Dungee has scored in double figures in all six games with 20 points twice (Arizona State, Wisconsin).
- Malica Monk and Alexis Tolefree have scored in double figures in five of six games.
- Dungee (2x) and Tolefree (1x) have scored 20+ points in a single game this season.
- Three players have had double figure rebounding games. Kiara Williams had 11 boards against Tennessee State, Bailey Zimmerman had 11 rebounds against Pitt and Taylah Thomas grabbed 12 rebounds against Wisconsin.
- Bailey Zimmerman had the first double-double of the season and of her career with 11 points and 11 rebounds against Pitt.

## NEWCOMERS CAN SCORE

- Alexis Tolefree has led Arkansas in scoring in four games and Chelsea Dungee has led Arkansas in two games.
- Redshirt transfer Chelsea Dungee leads the team averaging 15.5 points per game.
- Junior college transfer Alexis Tolefree is second on the team averaging 15.0 points per game.
- Newcomers Chelsea Dungee, Alexis Tolefree, A'Tyanna Gauden and Rokia Doumbia have scored 233 of Arkansas' 451 points. That is nearly 54% of the team's points this season.

## SEC CAREER LEADERS

- Malica Monk ranks ninth among active SEC players for career points with 925.
- Kiara Williams is 11th among active SEC players with 313 career rebounds. Williams is just outside the top-10 (42) with 37 career blocks.

## WHAT'S HE SAYIN?

Don't be alarmed if you don't understand what Head Coach Mike Neighbors is saying on the bench. He has a language all his own.

Coach Neighbors plays "Positionless Basketball". Instead of having guards, forwards and centers, he has Rabbits, Rackers, Locks and Dragons.



Rabbits run the floor and look to score quickly with a layup.



Rackers are the player with the ball - go to the rack.



Locks are the players who are trying to win the race to the corners



The Dragon is the last player down the court. Watch out for a long distance shot from this spot.

- Malica Monk ranks fourth with 144 career steals and is seventh with 269 career assists.

## HOME GROWN

- Arkansas has six in-state players on the roster this year.
- That is the most Arkansans on the team since 2010 when there were seven in-state players.
- The Razorbacks have had 113 players from the state on its rosters with Little Rock producing the most with 11 student-athletes.

## GUARD HEAVY

- Arkansas has nine players who list their positions as guard or point guard and two others who are guard/forwards.
- The guard-heavy lineup allows the Razorbacks to play "Functionally Fast" - or as fast as they can while functioning at a high level.
- Look for senior Malica Monk and redshirt sophomore A'Tyanna Gauden to handle the ball a lot. Both players are fast and don't make many mistakes.

## OUR RECORD WHEN ...

Overall .....	4-2
Home .....	1-1
Away .....	1-0
Neutral .....	2-1
SEC .....	TBA
Home .....	-
Away .....	-
White Uniforms .....	1-2
Cardinal Uniforms .....	3-0
Anthracite Uniforms .....	-

## LEADS/QUARTERS/HALFTIME/OT

Leading after the 1st quarter .....	2-1
Leading after the 2nd quarter/Half .....	2-1
Leading after the 3rd quarter .....	1-1
Leading at the half, home .....	1-0
Leading at the half, road/neutral .....	1-0
Tied at the half, home .....	-
Tied at the half, road/neutral .....	-
Trailing at the half, home .....	0-1
Trailing at the half, road/neutral .....	1-1
Games decided by 5 points or fewer .....	2-1
Games decided by 10 points or fewer .....	2-2
Leading with 5:00 left .....	3-0
Leading with 2:00 left .....	4-0
Overtime games .....	-

## OFFENSE

Scoring less than 70 points .....	2-1
Scoring 70-79 points .....	1-0
Scoring 80-89 points .....	0-1
Scoring 90-99 points .....	1-0
Scoring 100+ points .....	-
2 Players Or Less in Double Figures .....	-
3 Players in Double Figures .....	1-1
4 Players in Double Figures .....	2-1
5 Players in Double Figures .....	-
More than 5 players in Double Figures .....	1-0 (NSU)
1 Player Scores 20+ Points .....	1-0
2 Players Score 20+ Points .....	0-1
When shooting 50 percent or higher .....	1-0
When shooting less than 50 percent .....	3-2

## REBOUNDING/TURNOVERS

When outrebounding opponent .....	3-0
When outrebounded .....	1-2
When rebounds are even .....	-
When grabbing 10+ offensive reb .....	4-2
When forcing 15+ turnovers .....	4-2
When committing less than 15 turnovers .....	2-2
When committing 15+ turnovers .....	2-0

## Top Scorers (Includes Ties)

Tolefree .....	NSU, UTA, ASU, Pitt
Monk .....	UTA
Dungee .....	TSU, Wisc.

## Top Rebounders (Includes Ties)

Williams .....	NSU, ASU, TSU
Thomas .....	NSU, UTA, Wisc.
Zimmerman .....	Pitt

## Months

In November .....	4-2
In December .....	-
In January .....	-
In February .....	-
In March .....	-



## WHAT'S NEW?

- Arkansas' new players have stepped up early.
- Redshirt sophomore Chelsea Dungee leads the team averaging 15.5 points per game and has also been in double digits in each of the first six games.
- Junior college transfer Alexis Tolefree is second on the team averaging 15.0 points per game. Tolefree leads the team with 18 3-point field goals and 11 steals.
- Redshirt sophomore A'Tyanna Gaulden is sixth with 6.5 ppg.

## THREEEEEEE POINT BASKET

- Arkansas wants to be a 3-point shooting team.
- The Razorbacks have 41 made 3-pointers this year.
- Alexis Tolefree leads the team with 18 made 3-point baskets followed by Chelsea Dungee with 10 makes from distance.

## FUNCTIONALLY FAST

- Coach Neighbors wants Arkansas to play as fast as they can function. That means move quickly but don't make a lot of mistakes and that is exactly what the Razorbacks did last year.
- Arkansas led the SEC and ranked fourth in the nation for fewest turnovers with just 360 miscues in 31 games last season.
- Arkansas has 390 field goal attempts and attempted 156 free throws for a total of 546 shots. They have 80 turnovers heading into the ORU game.
- Arkansas has scored double figure fast break points in five of six games this year with a season-best 195 FB points against Tennessee State.

## SPEAKING OF FAST

Fast starts are something that the Razorbacks want to take advantage of this season. With speed and depth, it will be one of the advantages Arkansas has against bigger teams.

Scoring in the first five minutes:	ASU	12-19 (L)
	TSU	8-9 (W)
SWB 18-2 (exh)	Pitt	8-4 (L)
ECU 9-4 (exh)	Wis	11-5 (W)
NSU 15-9 (W)		
UTA 13-4 (W)		

## FINISHING STRONG

Along with the fast starts, Arkansas is looking to finish strong - that is the benefit of depth late in the game.

Scoring in the final five minutes:		UTA	4-6 (W)
		ASU	16-11 (L)
SWB	9-0 (exh)	TSU	14-4 (W)
ECU	17-8 (exh)	Pitt	5-8 (L)
NSU	9-5 (W)	Wis	12-12 (W)

## SOME THINGS REMAIN THE SAME

### TRUST, TALENT AND TIME

My program will be built on three things. It's very simple.

→ TRUST - The highest form of loyalty that has to be earned, managed and sometimes re-earned. If we don't have this, nothing will work and the stool's legs will fall off and everything will collapse.

→ TALENT - It doesn't mean you can dribble, shoot, pass and rebound. It's a lot of other things like the ability to engage with the fan base and willingness to sign autographs for a 10-year-old child you might be inspiring.

→ TIME - It's just not being on time or making time. It's how you utilize your time and who you invest your time with and be around. Trust, talent and time. Those will be our pillars.

## SIDE BY SIDE

→ One of the things Mike Neighbors stressed when he was hired was his desire to take care of the players, the staff and the fans who have been loyal to the Razorback program. He has told our fans that he wants them to stand "Beside Us". Don't be behind us, stand next to us and go through the process of building our program.

→ You will notice the team and coaches line up and walk side-by-side from the half court line to the baseline of every game. It is a final moment of reflection, a chance to clear your head and a reminder that we are in this together.

## HOME SWEET HOME

→ Arkansas has had just one losing home season in 42 years (2009-10)

→ Arkansas is 423-147 (1-1 in '18-'19) in home games including a 264-111 record in Bud Walton Arena. Arkansas was 159-35 in Barnhill Arena.

## FROM MIKE NEIGHBORS

Here is a quick look at a couple observations from head coach Mike Neighbors about this year's team:

→ We are still small. There is no getting around it - Malica Monk did not grow in the off-season. This year, Arkansas has nine guards with Monk listed at 5-5 and Grayce Spangler and Chelsea Dungee at 5-11. If you look at the four guards who return with playing experience our average height is about 5-7.

→ We may be small but we are fast. Look for Arkansas to push the tempo even more this season. Not only do the Razorbacks have individually fast players, they have a lot of them so legs should be fresh for the entire game.

→ Neighbors is looking for a high number of shot attempts versus a low number of turnovers. Turnovers are a wasted possession - you don't have a chance to score. Last season, Arkansas

## OUR RECORD WHEN ...

MARGIN OF VICTORY/DEFEAT			
Points	Win	Loss	Total
1	2	0	2-0
2			
3	0	1	0-1
4			
5			
6			
7	-	1	0-1
8			
9			
10			
11-15			
16-19			
20+	2	0	2-0

## QUARTER RECORDS

### Most First Period Points

2018-19	28	NSU (11-9-18)
All-Time	29	at Alabama (1-15-17)
Opponent	33	No. 15 Missouri (2-12-18)

### Fewest First Period Points

2018-19	15	at UTA (11-16-18)
All-Time	3	UTEP (11-24-17)*
Opponent	6	SHSU (11-11-16)

### Most Second Period Points

2018-19	28	NSU (11-9-18)
All-Time	31	HBU (12-28-16)
Opponent	35	at #2 S. Carolina (1-3-16)

### Fewest Second Period Points

2018-19	8	Pitt (11-24-18)
All-Time	4	vs. Kentucky (2-17-17)
Opponent	3	at Alabama (1-15-17)

### Most First Half Points

2018-19	56	NSU (11-9-18)
All-Time	65	Tenn State (11-27-88)
Opponent	63	Texas (1-9-89)

### Fewest First Half Points

2018-19	18	Pitt (11-24-18)
All-Time	11	at Missouri (3-1-15)*
Opponent	8	Montana State (1-5-03)

### Most Third Period Points

2018-19	20	Pitt (11-24-18)*
All-Time	34	HBU (12-28-16)*
Opponent	30	at Miss State (1-4-18)*

### Fewest Third Period Points

2018-19	15	Wisconsin (11-25-18)*
All-Time	7	Florida (1-18-18)*
Opponent	4	LSU (1-21-16)

### Most Fourth Period Points

2018-19	23	No. 22 Arizona State (11-18-18)
All-Time	32	Tulsa (11-23-15)
Opponent	33	Alabama (1-7-18)

### Fewest Fourth Period Points

2018-19	13	at UTA (11-16-18)
All-Time	5	#7 Ore. St. (11-28-15)
Opponent	10	#24 Missouri (1-17-16)*

### Largest Margin of Victory

2018-19	56 (98-53)	NSU (11-9-18)
All-Time	79 (108-29)	B Wesleyan (2-18-77)
Opponent	54 (28-82)	La Tech (11-30-78)

\*Most Recent

took 2077 shots and committed just 360 turnovers. Arkansas ranked **fifth in the SEC** in shots taken and was **first in the SEC** with just 360 turnovers.

→ Arkansas has more shot-makers this year. The Razorbacks return their leading scorer and add in a couple of redshirt players who made significant offensive contributions during the trip to Italy, the exhibitions and non-conference games.

## MONK'S SCORING

→ Malica Monk returns as the team's leading scorer averaging 15.9 points per game last season.

→ Monk scored in double figures in 29 of 31 games as a junior including 14 games in a row to start the year. **She has scored in double digits in five of six games this season.**

→ Monk scored 20+ points 10 times including a career-best 25 points against No. 11 Tennessee on Feb. 8, 2018 as a junior.

→ Monk is on track to become the 28th player in program history to score 1,000 career points.

→ One stat for Monk should go in the other direction ... Arkansas has more depth this season so look for her minutes per game to drop as Coach Neighbors keeps her legs fresh for the fourth quarter.

## MONK GETS PRESEASON NOD

Senior Malica Monk was selected as a Second-Team All-Southeastern Conference honoree in a vote by the league's coaches. Monk, a senior from Little Rock, Arkansas, led the Razorbacks and was 12th in the SEC averaging 15.9 points per game a year ago. Billed as one of the fastest players in the SEC, Monk also accounted for 3.4 rebounds per game, had a team-best 122 assists, made 38 3-pointers and went 114-146 from the line as a junior.

## RECORDS WATCH

### THE ROAD TO 1,000

→ Malica Monk begins the season with 894 career points and has 74 points this year.

→ She averages 10.2 ppg for her career and, if she plays in 24 more games (one game into the SEC Tournament), she would add 244.8 points to her total - well over the 1,000-point plateau (1,212).

→ That milestone would make Monk the 28th player in program history to score 1,000 career points and would have her moving into the top-20 scorers at Arkansas.

### 1,000 POINT CLUB

21.	Amanda Holley (81-84)	3	94	1,154
22.	Monica Brown (83-87)	4	103	1,145
23.	Kelly Johnson (92-96)	4	113	1,109
24.	Blair Savage (89-93)	4	114	1,072
25.	Sarah Pfeifer (02-08)	6	124	1,056
26.	Kim Bunge (79-83)	4	114	1,047
27.	Loniya Bragg (97-01)	4	129	1,036
28.	Whitney Jones (05-09)	4	119	961
29.	Keira Peak (11-14)	4	126	936
30.	<b>Malica Monk (16-present)</b>	<b>4</b>	<b>91</b>	<b>925</b>
31.	Charity Ford (07-10)	4	117	917
32.	Rochelle Vaughn (02-06)	4	120	894
33.	Devin Cosper (2016-18)	3	88	866
34.	Jhasmin Bowen (12-15)	4	108	861
35.	Lanell Dawson (85-87)	2	59	858
54.	<b>Jailyn Mason (17-present)</b>	<b>3</b>	<b>67</b>	<b>603</b>

## THE POLLS

Nov. 26

### AP TOP 25

RK	TEAM	RECORD	PTS
1	Notre Dame (31)	6-0	775
2	UConn	5-0	735
3	Oregon	6-0	705
4	Baylor	6-0	674
5	Louisville	5-0	660
6	Mississippi State	6-0	606
7	Maryland	6-0	576
8	Stanford	6-0	567
9	Oregon State	5-1	523
10	Texas	6-0	494
11	Tennessee	5-0	476
12	Syracuse	6-1	422
13	NC State	6-0	410
14	Iowa	4-1	323
15	California	6-0	287
16	DePaul	3-2	285
17	Texas A&M	4-1	221
18	South Carolina	3-3	212
19	Arizona State	3-2	178
20	Minnesota	5-0	170
21	Miami	6-1	148
22	Marquette	4-1	137
23	Iowa State	5-0	93
24	Drake	6-1	73
25	Kentucky	7-0	68

Others receiving votes: Northwestern 59, Missouri 59, West Virginia 59, Georgia 18, South Florida 17, Virginia Tech 13, Michigan 10, Utah 6, North Carolina 5, USC 4, Florida State 3, Boise State 2, LSU 2

Nov. 27

### USA TODAY COACHES POLL

RK	TEAM	RECORD	PTS
1	Notre Dame (32)	6-0	800
2	UConn	5-0	763
3	Oregon	6-0	723
4	Louisville	6-0	705
5	Baylor	6-0	661
6	Mississippi State	6-0	631
7	Stanford	6-0	576
8	Maryland	6-0	563
9	Oregon State	5-1	548
10	Texas	6-0	542
11	Tennessee	5-0	466
12	Syracuse	6-1	447
13	NC State	6-0	427
14	DePaul	4-2	322
15	Iowa	4-1	297
16	Texas A&M	4-1	239
17	Marquette	4-1	212
18	California	6-0	209
19	South Carolina	3-3	193
20	Miami	6-1	179
21	West Virginia	4-1	133
22	Iowa State	5-0	110
23	Arizona State	3-2	105
24	Drake	6-1	104
25	Kentucky	7-0	100

Others receiving votes: Michigan 69, South Florida 62, Missouri 59, Minnesota 36, Florida State 32, USC 25, Northwestern 13, Green Bay 11, Gonzaga 10, Virginia Tech 7, Kansas 6, Oklahoma State 5, Georgia 3, UCF 2, Tulane 1, Duke 1, New Mexico 1, UAB 1, South Alabama 1

Statistic	Player	National SEC		
		Rank	Rank	Value
Blocks Per Game (225 ranked)	Bailey Zimmerman	225	19	1.00
Field Goal Atts (149 ranked)	Alexis Tolefree	37	3	94
Final Points (197 ranked)	Chelsea Dungee	139	13	93
	Alexis Tolefree	167	15	90
Free Throw Att (145 ranked)	Malica Monk	35	2	37
	Chelsea Dungee	58	5	34
Free Throws Made (150 ranked)	Chelsea Dungee	59	2	25
Points Per Game (249 ranked)	Chelsea Dungee	188	10	15.5
	Alexis Tolefree	213	13	15.0
Rebounds (150 ranked)	Kiara Williams	117	7	47
Reb Per Game (244 ranked)	Kiara Williams	152	9	7.8
	Taylah Thomas	236	13	7.2
3-Point FG Att (143 ranked)	Alexis Tolefree	7	1	58
3-Point FG Made (140 ranked)	Alexis Tolefree	32	3	18
3-Point FGPG (211 ranked)	Alexis Tolefree	55	2	3.00
3-Point FG% (250 ranked)	Alexis Tolefree	235	11	31.0

## GIMMIE THE BALL

- Malica Monk and Jailyn Mason are also climbing the career assists ladder.
- Monk began the year tied for No. 17 in program history and has 17 assists this year. She is currently No. 14 overall.
- Mason is just outside the top-25 with 194 assists.

NAME (CAREER)	YR	GP	AST
1. Amy Wright (98-02) *	4	131	717
2. Calli Berna (12-15)	4	128	667
3. Amber Nicholas (88-92)	4	117	538
4. C'eira Ricketts (09-12)	4	129	516
5. Christy Smith (94-98)	4	111	507
6. Tracy Webb (83-87)	4	117	444
7. Brittney Vaughn (04-08)	4	129	424
8. Rochelle Vaughn (02-06)	4	120	421
9. Donna Wilson (87-89)	2	58	332
Kimberly Wilson (93-97)	4	120	332
11. Cheryl Orcholski (80-84)	4	123	323
12. Juliet Jackson (86-90)	4	120	313
13. India Lewis (99-03)	4	128	276
<b>14. Malica Monk (16-pres.)</b>	<b>4</b>	<b>91</b>	<b>269</b>
15. Christi Willson (87-91)	3	87	268
16. Lynday Harris (09-10)	4	123	265
17. Lakishia Harper (99-03)	4	125	257
18. Shea Henderson (90-94)	4	92	252
19. Blair Savage (89-93)	4	114	233
20. Kristin Peoples (03-06)	3	71	229
21. Wendi Willits (97-00)	4	131	228
22. Sally Moore (89-91)	2	61	215
23. Doris Gaiser (81-85)	4	119	210
24. Sytia Messer (95-99)	4	128	208
<b>Jailyn Mason (2017-present)</b>	<b>3</b>	<b>67</b>	<b>198</b>

\*--Also ranks sixth all-time in SEC history

## SPECIALTY STATS

Opponent	T/O	2ndCh	Paint	FastB	Bench	Ties	Leads	WL	Score	Leads overcome
NSU	36	14	38	11	46	0	0	W	98-53	
UTA	13	12	32	15	10	4	7	W	66-65	trailed by 7 3rd-5:11
#22 ASU	17	14	40	10	11	2	2	L	85-88	lost 2 2nd-3:43
TSU	35	12	30	19	26	1	3	W	79-55	Trailed by 5 1st-8:16
Pitt	19	10	22	10	17	1	0	L	54-61	lost 2 1st-9:40
Wis	15	11	28	6	6	2	3	W	69-68	trailed by 15 3rd-4:12
Totals	135	73	190	71	116	10	15			
APG	22.5	12.2	31.7	11.8	19.3	1.7	2.5			
Opponent	63	59	188	15	136	12	14			
APG	10.5	9.8	31.3	2.5	22.7	2.0	2.3			

## BIGS KEY TRANSITION

Coach Neighbors believes that the bigs key Arkansas' transition game. If they can run the court - and Kiara Williams, Taylah Thomas and Macy Weaver can - it puts pressure on the defense. If our opponents' bigs don't get back, a guard has to pick one of our players up leaving someone open.

## THE 2018 SIGNING CLASS

Signee	Pos.	Ht.	Hometown
Destinee Oberg	C	6-3	Burnsville, Minn.
Makayla Daniels	PG	5-8	Frederick, Md.
Marquesha Davis	F	6-0	Springdale, Ark.
Ginger Reece	F	5-10	Lawton, Okla.
Amber Ramirez	G	5-9	San Antonio, Texas

- The class is ranked No. 11 by Blue Star Sports.
- The recruiting class is ranked No. 4 in the Southeastern Conference behind powerhouses South Carolina, Tennessee and Mississippi State by All Star Girls Report. The class ranks 15th in the nation by the same service.

## THE NATION'S PREMIER WBB CONFERENCE

- With nine national championships, 12 runner-up finishes, a nation-leading 38 Final Four appearances and 132 first-team All-America honors, the SEC stands firmly as the nation's premier intercollegiate women's basketball conference.
- Seven SEC teams played in the NCAA Tournament and an eighth team in the WNIT in 2018.
- Thirteen of the current SEC coaches have led teams to the NCAA Tournament, eight with their respective SEC teams.
- Eight current SEC coaches have taken teams to the Sweet 16, seven have advanced to the Elite Eight and four have gone on to the Final Four.
- Four current SEC coaches have been head coaches in the Final Four with two winning national championships.

## STRONG NON-CON AS WELL

- In addition to the challenge of the SEC, Arkansas faces two additional NCAA Tournament teams in Arizona State and Nebraska in the non-conference portion of the schedule.
- Iowa State, a team Arkansas plays for the first time since 1980, is this year's Big 12/SEC Challenge opponent. The Cyclones have reached the NCAA Tournament 17 times in the last 22 years.
- Arkansas faces 14 non-conference opponents from 10 conferences ... Four of those teams finished in the top-4 in their league standings in 2018.
- The Razorbacks have faced all 14 of this year's non-conference opponents.
- Coach Neighbors is facing six of the non-conference foes for the first time as a head coach. They are: Northwestern State, Tennessee State, Iowa State, Tennessee Tech, Prairie View A&M and Jackson State.
- As a program, Arkansas is 73-19 against this year's non-conference opponents.
- Coach Neighbors is 8-6 as a HC against the non-conference schedule.

## STARTERS

Game	G	G	G	G	F
NSU	Northcross-Baker	Tolefree	Monk	Dungee	Williams
UTA	Mason	Tolefree	Monk	Dungee	Williams
ASU	Mason	Tolefree	Monk	Dungee	Williams
TSU	Mason	Tolefree	Monk	Dungee	Williams
PITT	Mason	Tolefree	Monk	Dungee	Williams
WISC	Mason	Tolefree	Monk	Dungee	Williams
ORU					
ISU					
TTU					
ACU					
PVAM					
NEB					
TUL					
JSU					
MSU					
OM					
MO					
VU					
UT					
ALA					
FLA					
GA					
SC					
LSU					
AU					
KY					
GA					
OM					
MO					
TAMU					

## LEADS AND DEFICITS

Biggest Halftime Lead	29, NSU
Biggest Halftime Lead Lost	-
Biggest Halftime Deficit	7, Pitt
Biggest HT Deficit Erased	-
Biggest Overall Lead	46, NSU
Biggest Win Margin	45, NSU
Biggest Loss Margin	7, Pitt
Biggest Deficit Overcome	15, Wisc.

## JUMP BALLS

Arkansas	2
Opponents	4

## FIRST POINTS

Tolefree	NSU, ASU, TSU
Dungee	Pitt, Wis.
Monk	UTA

## DOUBLE FIGURE POINTS

Tolefree	5
Dungee	6
Monk	5
Williams	2
Mason	2
Zimmerman	2
Doumbia	1
Gaulden	1
Thomas	1

## LEADING SCORER

Tolefree	3
Dungee	2
Zimmerman	1
Monk	1

## DOUBLE FIGURES FIRST HALF

Tolefree	NSU, ASU
Dungee	UTA

## DOUBLE FIGURES/QUARTER

Tolefree	ASU (10)
----------	----------

## 20/30-PLUS POINTS

Tolefree	ASU
Dungee	ASU, Wis

## DOUBLE FIGURE REBOUNDS

Williams	TSU
Zimmerman	Pitt

## LEADING REBOUNDER

Thomas	3
Williams	3
Zimmerman	1

## DOUBLE DOUBLES

Zimmerman	Pitt
-----------	------

## 5+ASSISTS/10+ ASSISTS

Tolefree	Pitt
----------	------

## FIRST OFF THE BENCH

Thomas	5
Zimmerman	4
Doumbia	2
Gaulden	3
Mason	1
Raven Northcross-Baker	1
A'Tyanna Gaulden	1

## CHARGES DRAWN

Gaulden	ASU
Dungee	Pitt

## FORCED 10 SECOND VIOLATION

2018-19	TBA
---------	-----

## FORCED SHOT CLOCK VIOLATION

2018-19	3
---------	---

## FORCED INBOUND VIOLATION

2018-19	ASU
---------	-----

## AND 1 CONVERSIONS

Gaulden	1
Doumbia	1
Tolefree	1
Monk	1
Dungee	1
Zimmerman	1

## AND 1 MISS

Williams	3
Dungee	1
Monk	1

## BUZZER BEATERS

Tolefree	UTA (game winner)
Monk	Wisc (4.7 seconds, game winner)

## SCORES BY QUARTERS

Opponent	1	2	HT	3	4	OT	Total
NSU	28/14	28/13	56/27	20/19	22/17	-	98/53
UTA	15/16	21/15	36/31	17/23	13/11	-	66/65
ASU	25/29	17/17	42/46	20/23	23/19	-	85/88
TSU	22/12	15/22	37/34	15/14	27/7	-	79/55
PITT	10/17	8/8	18/25	20/21	15/16	-	54/61
WISC	20/17	11/16	31/33	15/19	23/16	-	69/68
ORU							
ISU							
TTU							
ACU							
PVAM							
NEB							
TUL							
JSU							
MSU							
OM							
MO							
VU							

Opponent	1	2	3	4	OT	Total
UT						
ALA						
FLA						
GA						
SC						
LSU						
AU						
KY						
GA						
OM						
MO						
TAMU						



## THE LAST TIME ...

## OFFENSE

Scored 110+ .....	110, vs. Providence (11/16/98)
Scored 100+ points at home .....	101, Houston Baptist, 12-28-16
Scored 100+ points on the road .....	108, Baylor (3-6-91; SWC Tourn., Dallas)
Scored 90-99 points .....	98 vs. Northwestern State, 11-9-18
Scored 90+ points at home .....	98 vs. Northwestern State, 11-9-18
Scored 90+ points on the road .....	91, (91-80 Win in 3OT, 2-10-13, at Alabama)
Scored 80-89 points .....	85, No. 22 Arizona State (11-18-18)
Scored 80-89 points at home .....	86, Mississippi Valley State (12-28-15)
Scored 80-89 points on the road .....	88, Vanderbilt (2-28-18) (SEC Tourn.)
Scored 70-79 points .....	79, Tennessee State (11-23-18)
Scored 70-79 points at home .....	73, Ole Miss, 12-31-17
Scored 70-79 points on the road .....	79, Tennessee State (11-23-18) (neutral)
Scored 60-69 points .....	69, Wisconsin (11-25-18)
Was held to 50-59 .....	54, Pitt (11-24-18)
Was held to 49-40 .....	42 at No. 9 South Carolina (1-25-18)
Was held to 39-20 .....	32, at No. 2 South Carolina (1-3-16)
Was held to 20 or less .....	N/A
Made 30-39 field goals .....	32, No. 22 Arizona State (11-18-18)
Made 20-29 field goals .....	24, Wisconsin (11-25-18)
Made 10-19 field goals .....	19, Pitt (11-24-18)
Made 10 three-point field goals .....	11 vs. Northwestern State, 11-9-18
Did not make 3-pointer (since 1986) .....	0-10, at Miss State (L 44-47), 2-3-13
Made 30 free throws .....	38 at Florida (38-54); (2-22-04)
Made 15+ Free Throws .....	15, Wisconsin (11-25-18)
Shot 40-49 or better .....	47.8 (32-67), No. 22 Arizona State (11-18-18)
Shot 50-59 or better .....	57.6 (34-59) vs. Northwestern State, 11-9-18
Shot 60 % or better .....	.600 (36-60) vs. Ole Miss (W, 93-52; 3-3-13)
Held to less than 40 % .....	36.9% (24-65) vs Wisconsin (W, 69-68; 11-25-18)
Held to less than 30 % .....	25.7% (19-17) vs Pitt (L, 61-54; 11-24-18)
Held to less than 20 % .....	.182 (10-55) vs. No. 6/7 Tennessee (1-8-12; L, 38-69)
Opponent shot over 50% .....	50.0% (33-66) vs. No. 15 Texas A&M (3-1-18) (SEC Tournament)
Held opponent to less than 40% .....	27.0% (17-63) vs. Tennessee State (W, 79-55; 11-23-18)
Held opponent to less than 30% .....	27.0% (17-63) vs. Tennessee State (W, 79-55; 11-23-18)
Opponent shot less than 20% in a half .....	.200 (5-25), Grambling, 12-29-14 (1st)
Had 20 or more assists in a game .....	27, Houston Baptist, 12-28-16

## DEFENSE

Allowed 100 points .....	104 vs. No. 17 Texas A&M (2-22-18)
Allowed 80-99 points .....	88, No. 22 Arizona State (11-18-18)
Allowed 70-79 points .....	76 Vanderbilt, 2-28-18 (SEC Tournament)
Allowed 69-60 points .....	68 vs. Wisconsin, 11-25-18
Held opponent to 59-50 points .....	53 vs. Northwestern State, 11-9-18
Held opponent to 40-49 points .....	41, Tulsa, 12-10-17
Held opponent to 39-30 .....	36, Northwestern State, 12-18-16
Held opponent under 45 points three cons. games .....	45, SHSU (11-8-13, W 81-45); 33 ORU (11-13-13, W 91-33); 45, Furman (11-16-13, W, 74-45)
Held an SEC opponent under 50 points in 3 cons. games .....	47, Auburn (1-29-15, W, 52-47); 42, Alabama (2-1-15, W, 53-42); #24/21 Georgia (2-9-15, W, 54-48)
Held opponent to 29 points or less .....	23, Binghamton, 11-30-13
Held an opponent under 15 points in a half .....	13, Northwestern State, 12-18-16
Held opponent under 15 field goals .....	14, Houston Baptist, 12-28-16
Held opponent under 15% from 3-point .....	14.3% (2-14), at Auburn, 1-14-18
Had 70+ rebounds .....	74, Mississippi Valley State (11-24-89)
Had 60-69 rebounds .....	61, Tulsa, 12-10-17
Had 50-59 rebounds .....	55, vs. NMSU, 11-25-17
Had five or more blocked shots in a game .....	8, Tennessee State, 11-23-18
Had 20 or more steals in a game .....	20, ORU (11-13-13)
Had 15 or more steals in a game .....	16, at Florida, 2-9-17
Had 20 or more turnovers in a game .....	23 at Arizona State, 12-21-17
Forced 20-25 or more Turnovers in a game .....	22, Pitt , 11-24-18

## OTHER

Won an overtime game .....	91-80 Win in 3OT, 2-10-13, at Alabama
Lost an overtime game .....	Florida (71-66), 1-28-16
Won a double overtime game .....	73-72, vs. Florida (1-29-12)
Lost a double overtime game .....	N/A
Won a triple overtime game .....	91-80 Win in 3OT, 2-10-13, at Alabama
Played consecutive OT games .....	1-24-16 at Auburn (lost); 1-28-16 vs Florida (lost)
Won regular season tournament .....	Nugget Classic (Reno, Nev., Nov. 25-26, 2016)
Defeated ranked team .....	64-52, No. 24 Missouri, 1-17-16
Defeated a ranked team on the road .....	57-53, at #19/18 LSU, 2-23-14; 77-76, #17/16 Iowa (Las Vegas), 12-18-14
All-time SEC win streak .....	8 games (1-15-12: Auburn through 2-15-12: at Auburn)
All-time SEC home win streak .....	5 games (1-15-12: Auburn -- 2-9-12: S. Carolina)

## A RAZORBACK PLAYER ...

Scored 20-24 points .....	20, Chelsea Dungee, Wisconsin (11-25-18)
Scored 25-29 points .....	25, Kiara Williams vs. Vanderbilt, 2-28-18 (SEC Tournament)
Scored 30+ points .....	34, Jessica Jackson, Houston Baptist, 12-28-16
Scored 20+ points 10 times in a season .....	Malica Monk, 2017-18 (Samford 21, Neb. 22, ORU 24, NMSU, 22, KU 21, UTA 20, Ala. 21, FL 23, Tenn 25, 20 VU)
Double figures in 15 cons games (Season) .....	Jessica Jackson, 11/11/16, LSU 1-8-17
Scored 23+ points in three cons games .....	Jessica Jackson (24 at Georgia 1-16-14, 31 vs. Ole Miss 1-19-14, 23 at Kentucky 1-26-14)
Three players scored double figures in 1 game .....	at UT-Arlington, 11-14-18 (Monk, Tolefree, Dungee)
Four players scored double figures in 1 game .....	Wisconsin, 11-25-18
Four players scored doubles figures for 4 cons. games .....	Monk, 13; Williams, 13, Mason, 12, Dungee 20
Five players scored double figures in 1 game .....	Vanderbilt, 2-28-18 (SEC Tournament)
Seven players scored in double figures in 1 game .....	(Monk, Cosper, Mason, Williams, Northcross-Baker vs. Northwestern State, 11-9-18 (Tolefree, Gauden, Monk, Thomas, Doumbia, Dungee, Williams)
Made 10+ field goals in a game .....	11, Kiara Williams vs. Vanderbilt, 2-28-18 (SEC Tournament)
Attempted 15-19 field goals in a game .....	19, A'Tyanna Gauden at UT-Arlington, 11-14-18
Attempted 20+ field goals in a game .....	23, Alexis Tolefree vs Pitt, 11-24-18
Attempted 10 free throws in a game .....	12, Malica Monk vs. UTA, 12-17-17
Made 5 or more 3-pt FG in a game .....	6, Devin Cosper, No. 11 Tennessee, 2-8-18
Attempted 10+ 3-pointers in a game .....	16, Alexis Tolefree vs. Pitt, 11-24-18
Had 10-14 rebounds .....	12, Taylah Thomas vs. Wisconsin, 11-25-18
Had 15+ rebounds .....	16, Kiara Williams, Grambling State, 12-28-17
Had 10 offensive reb - Records go back to 05-06 .....	11, Melissa Wolff vs. New Orleans (1-30-15)
Had 10 defensive reb - Records go back to 05-06 .....	13, Devin Cosper, Alabama, 1-7-18
Had 10+ assists .....	10, Malica Monk, Grambling State, 12-28-17
Had 10+ assists in cons games .....	Jailyn Mason (11 vs. HBU, 12-28-16 and 10 at Ole Miss, 1-1-17), Calli Berna (11 vs. No. 10/8 KY 2/7/13 and 11 at UA 2/10/13)
Had 5+ blocks in a game .....	(3x) 5, Jessica Jackson (vs. ORU, 11-13-13); (No. 25 Vanderbilt, 2-20-14); (at Tulsa, 12-14-14)
Had 10+ blocks in a game .....	9, Robyn Irwin vs. SMSU, 12-19-88 (school record)
Had 5 or more steals in a game .....	5, Malica Monk vs. NMSU, 11-25-17
Had a double-double .....	Kiara Williams (15/14), at Auburn, 1-14-18
Had a double-double in two cons games .....	2017-18: Devin Cosper (25/14) Charlotte and (11/11) Tulsa
Had two players record a double-double .....	Kiara Williams (12 pts/16 reb) & Malica Monk (10 pts/10 reb.), Grambling State, 12-28-17
Had seven double-doubles in a season .....	Devin Cosper, 2017-18 (SHSU, ORU, NMSU, Char., Tulsa, OM, AL)
Had 10+ double-doubles in a season .....	2006-07, Lauren Ervin (14)
Had a triple-double .....	14 pts, 13 reb, 12 asts, C'eira Ricketts vs. Auburn (1-18-09)

## MORE ABOUT MIKE

Hometown: Greenwood, Ark. (Greenwood HS)  
Family: Daughter Abby; Son Alec  
Alma Mater: Arkansas, 1993

## NEIGHBORS BY THE NUMBERS

115	Wins (115-61, 6 seasons)
11	Players drafted in the WNBA
10	Signed McDonalds' All-Americans
5	Years as a head coach
4	Postseason appearances
1	Final Four appearance



## LEARN MORE

Sign up for Mike Neighbors' newsletter and listen to his podcasts at [CoachNeighbors.com](http://CoachNeighbors.com)

## NABES FAVES

### TOP 10 MOVIES

1. A Few Good Men
2. The Hunt For Red October
3. The Silence Of The Lambs
4. Hoosiers
5. Pretty Woman
6. Moneyball
7. Top Gun
8. JFK
9. The Lion King
10. Purple Rain

See the entire list here: <http://imdb.to/2royaEO>

### TOP 10 SONGS

1. Sweet Child O' Mine (Guns N' Roses)
2. You Shook Me All Night Long (AC/DC)
3. Man In The Mirror (Michael Jackson)
4. Amarillo By Morning (George Strait)
5. Jessie's Girl (Rick Springfield)
6. Hysteria (Def Leppard)
7. Fishin' In The Dark (Nitty Gritty Dirt Band)
8. The Ballard of Curtis Loew (Lynyrd Skynyrd)
9. Wanted Dead Or Alive (Bon Jovi)
10. Let's Go Crazy (Prince)

### TOP 10 TV SHOWS

1. West Wing (first three seasons)
2. The Wire
3. Breaking Bad
4. Seinfeld
5. The Newsroom
6. Prison Break
7. Arrested Development
8. Game of Thrones
9. The Sopranos
10. The Goldbergs

Entire list: <http://www.imdb.com/list/ls009377912/>



# MIKE NEIGHBORS

## THE MOST INTERESTING COACH IN COLLEGE BASKETBALL

Second Season / Career Record: 115-61 (6) / Arkansas Record: 17-20 (2)

## ROOKIE NOD TO NAISMITH NOMINEE

In four short years Mike Neighbors went from a Spalding Maggie Dixon Division I Rookie Coach of the Year nominee in 2014, to a Naismith Women's College Coach of the Year national semifinalist in 2017.

Neighbors guided UW to an historic campaign in 2016-17 leading the Huskies to 27 wins, it's second most in program history, and he was just one shy of the all-time a school record set in 1990 (28).

Picked to place third in the Pac-12 in the preseason poll, UW tied for second in the league with a 15-3 record, it's best conference finish since 2003. The Huskies' 15 conference wins tied for third most in program history. Washington, who entered conference play with the program-best 12 non-conference wins, clinched its first-ever bye in the first round of the Pac-12 Tournament. Washington put together an 11-game win streak and a six-game win streak in Pac-12 play in 2016-17.

## TIMELINE

- Bentonville HS Head Coach 1994-98
- Cabot HS Head Coach 1998-99
- Arkansas Director of Ops 1999-01
- Tulsa Univ. Assistant Coach 2001-05
- Univ. of Colorado Assistant Coach 2005-06
- Univ. of Arkansas Assistant Coach 2006-07
- Xavier Assistant Coach 2007-2011
- Univ. of Washington Assistant Coach 2011-13
- Univ. of Washington Head Coach 2013-17
- Univ. of Arkansas Head Coach 2017-present

## COACHING AT MY ALMA MATER

- Mike Neighbors Arkansas, 1993
- Holly Warlick Tennessee, 1981

A couple of other coaches have SEC ties. Joni Taylor is the head coach at Georgia and a 2002 graduate of Alabama. Matthew Mitchell is a 1995 graduate of Mississippi State and is the head coach at Kentucky. Nikki Fargas graduated from Tennessee in 1994 and is the head coach at LSU. Vic Schaefer is the head coach at Mississippi State and a 1984 graduate of Texas A&M.

## COACHING HISTORY

### University of Washington

Year	Overall	Pac-12	Finish
2013-14	20-14b (.588)	10-8 (.556)	6
2014-15	23-10 (.697)	11-7 (.611)	5
2015-16	26-11 (.703)	11-7 (.611)	5
2016-17	29-6 (.829)	15-3 (.833)	T-2

### University of Arkansas

Year	Overall	SEC	Finish
2017-18	13-18 (.419)	3-13 (.188)	T-11
2018-19	4-2 (.667)	0-0	TBA

Totals 115-61 (.653) 50-38 (.590) 6 yrs

## PLAYER DEVELOPMENT

YEAR	UNIVERSITY	PLAYER	ROUND	OVERALL	TEAM NOTE
2017	Washington	Kelsey Plum	1	1	San Antonio Spurs ! @
	Washington	Chantel Osahor	2	21	Chicago Sky ! @
2016	Washington	Talia Walton	3	29	Los Angeles Sparks ! @
2011	Xavier	Amber Harris	1	4	Minnesota Lynx #
	Xavier	Ta'Shia Phillips	1	8	Atlanta Dream #
	TAMU/UAFS	Tanisha Smith	2	22	Seattle Storm #
	Colorado	Brittany Spears	2	19	Phoenix Mercury *
2009	Arkansas	Shameka Christon	1	5	New York Liberty #
2008	Arkansas	Lauren Ervin	3	37	Connecticut Sun #
2006	Tulsa	Megan Moody	-	-	Houston Comets
					Free Agent #
2003	Tulsa	Allison Curtin	1	12	Houston Comets ! #
	Arkansas	Dana Cherry	2	23	Traded to Detroit Shock
					Charlotte Sting

\*-Recruited but did not coach

!-At the school when player was drafted

@-Worked with player as a head coach

#-Worked with player as an assistant coach

S-Worked with player as other (GA, etc)

## COACHING DEVELOPMENT

Coach	w/Nabes	Now
Fred Castro	'14, '15, '16	HC Eastern Michigan
Adia Barnes	'14, '15	HC Arizona
Adam Call	'14	AC Eastern Michigan
Morgan Valley	'16	AC Arizona
Todd Schaefer	'16	AC Arkansas
Jasmine Lister	'16	AC DePaul

## THE MOST INTERESTING MAN IN COLLEGE BASKETBALL

→ Grew up with a "Big Touk": Coach is lactose intolerant and often had Coke in his bottle.

→ Blueberry Please: When he got old enough to make his own breakfast, Pop Tarts were a regular. He liked the chocolate ones as a kid but prefers frosted blueberry now.

→ Movies: His expansive movie collection includes digital, disk and VHS copies. Did you know he used to work at BlockBuster?

→ Lunch Boxes: Coach collects tin lunch boxes and has them displayed in his home. His first lunch box had KISS on it. He got it in second grade.

→ Athens City Champion: Coach stumbled upon a dart tournament while on a trip to Athens, Georgia. He joined in and was one of the two-man winning team.



## IT'S BIGGER THAN THE GAME

Mike Neighbors continued his support of breast cancer awareness this year serving as a Koman Ozarks Big Wig. He headlined a team tasked to raise both money and awareness for and of breast cancer.

Former Razorback India Lewis (1999-2003) lost her battle with breast cancer in August 2018. She was just 36 years old.

NEIGHBORS VERSUS ...			Oklahoma	1	2
Abilene Christian	1	0	Ole Miss	1	0
Alabama	1	1	Oral Roberts	1	0
Arizona State	2	5	Oregon State	1	6
Arizona	6	0	Oregon	5	3
Auburn	1	0	Pennsylvania	1	0
Boise State	1	0	Pittsburgh	1	0
BYU	1	0	Portland	3	1
California	4	3	Prairie View A&M	TBA	
Charlotte	1	0	Saint Mary's	0	1
Colorado State	1	0	Sam Houston State	1	0
Colorado	9	0	Samford	1	0
CSUN	1	0	San Diego State	2	0
DePaul	0	1	San Diego	1	0
Eastern Washington	1	0	Santa Clara	1	0
Florida State	1	0	Savannah State	1	0
Florida	0	1	Seattle	4	0
Fresno State	2	0	South Carolina	0	1
Furman	1	0	South Dakota	2	0
Georgia	0	1	Stanford	3	5
Grambling State	2	0	Syracuse	0	2
Grand Canyon	1	0	Tennessee	0	1
Hartford	1	0	Tennessee Tech	TBA	
Hawai'i	1	0	Texas A&M	1	3
Houston	1	0	Texas Tech	1	0
Idaho	1	0	TULSA	1	0
Iowa State	TBA		UC Irvine	1	0
Jackson State	TBA		UC Riverside	2	0
Kansas	0	1	UCLA	4	2
Kentucky	1	2	USC	6	0
Louisiana-Monroe	1	0	Utah	7	3
LSU	0	1	UT-Arlington	1	0
Maryland	1	0	UTEP	0	2
Miami	0	1	Vanderbilt	1	1
Mississippi State	0	2	Washington State	5	3
Missouri	1	2	Weber State	1	0
Montana State	2	0	Wisconsin	1	0
Nebraska	0	1	Yale	1	0
New Mexico State	1	0			
Notre Dame	0	1	TOTALS	111	59



**Mike Neighbors**  
@coachneighbors

Replying to @RazorbackWBB

While we will be fighting for all, #21 India Lewis, will never be forgotten by the Razorbacks.

8:20am · 5 Sep 2018 · Twitter for iPhone

SOCIAL | @RAZORBACKWBB

## 0 A'TYANNA GAULDEN

Stat	'18-'19	Career
Double Figure Pts	1	1
Double Figure Rebs		
Double-Doubles		
5 + Assists		
5 + Blocks		
5 + Steals		
Led Team in Pts		
Led Team in Reb		
20 + Points		

## 1 RAVEN NORTHCROSS-BAKER

Stat	'17-'18	'18-'19	Career
Double Figure Pts	3	-	3
Double Figure Rebs			
Double-Doubles			
5 + Assists			
5 + Blocks			
5 + Steals			
Led Team in Pts	2	-	2
Led Team in Reb			
20 + Points	1	-	1

## 2 ALEXIS TOLEFREE

Stat	'16-'17	'17-'18	'18-'19	Career
Double Figure Pts		26	5	31*
Double Figure Rebs		-		
Double-Doubles		-		
5 + Assists		3	1	4*
5 + Blocks		-		
5 + Steals		3		
Led Team in Pts		-	4	4
Led Team in Reb				
20 + Points		18	1	19*
30/40/50+ Points		1/1/1		

\*missing junior college freshman season

## 3 MALICA MONK

Stat	'15-'16	'16-'17	'17-'18	'18-'19	Career
Double Figure Pts	3	13	27	5	48
Double Figure Rebs					
Double-Doubles (pts/ast)	-	-	1	-	1
5 + Assists	3	4	11	-	18
5 + Blocks					
5 + Steals	-	2	-	-	2
Led Team in Pts	-	-	13	1	1
Led Team in Reb	-	-	3	-	3
20 + Points	-	-	10	-	10

## 10 KIARA WILLIAMS

Stat	'16-'17	'17-'18	'18-'19	Career
Double Figure Pts	-	11	2	13
Double Figure Rebs	-	7	1	8
Double-Doubles (pts/reb)	-	4	-	4
5 + Assists				
5 + Blocks				
5 + Steals				
Led Team in Pts	-	4	-	4
Led Team in Reb	-	13	3	16
20 + Points	-	1	-	1

## 13 GRAYCE SPANGLER

Stat	'17-'18	'18-'19	Career
Double Figure Pts			
Double Figure Rebs			
Double-Doubles			
5 + Assists			
5 + Blocks			
5 + Steals			
Led Team in Pts			
Led Team in Reb			
20 + Points			

## 14 JAILYN MASON

Stat	'16-'17	'17-'18	'18-'19	Career
Double Figure Pts	10	19	2	31
Double Figure Rebs				
Double-Doubles (pts/ast)	2	-	-	2
5 + Assists	6	5	-	11
5 + Blocks				
5 + Steals				
Led Team in Pts	-	8	-	8
Led Team in Reb	-	1	-	1
20 + Points				

## 20 SYDNEY STOUT

Stat	'16-'17	'17-'18	'18-'19	Career
Double Figure Pts				
Double Figure Rebs				
Double-Doubles				
5 + Assists				
5 + Blocks				
5 + Steals				
Led Team in Pts				
Led Team in Reb				
20 + Points				

## 22 BAILEY ZIMMERMAN

Stat	'15-'16	'16-'17	'17-'18	'18-'19	Career
Double Figure Pts	-	2	5	2	9
Double Figure Rebs	-	-	-	1	1
Double-Doubles	-	-	-	1	1
5 + Assists					
5 + Blocks					
5 + Steals					
Led Team in Pts					
Led Team in Reb	-	-	2	1	3
20 + Points					

## 23 AMBER RAMIREZ

Stat	'16-'17	'17-'18	'18-'19	Career
Double Figure Pts	7	18	RS	
Double Figure Rebs	-	-		
Double-Doubles	-	-		
5 + Assists	2	7		
5 + Blocks	-	-		
5 + Steals	-	-		
Led Team in Pts	NA	NA		
Led Team in Reb	-	-		
20 + Points	-	3		
30+ Points	-	1		

## 24 TAYLAH THOMAS

Stat	'17-'18	'18-'19	Career
Double Figure Pts	1	1	2
Double Figure Rebs	1	1	2
Double-Doubles			
5 + Assists			
5 + Blocks			
5 + Steals			
Led Team in Pts			
Led Team in Reb	7	3	10
20 + Points			

## 30 MACY WEAVER

Stat	'17-'18	'18-'19	Career
Double Figure Pts			
Double Figure Rebs			
Double-Doubles			
5 + Assists			
5 + Blocks			
5 + Steals			
Led Team in Pts			
Led Team in Reb			
20 + Points			

## 33 CHELSEA DUNGEE

Stat	'18-'19	Career
Double Figure Pts	6	6
Double Figure Rebs		
Double-Doubles		
5 + Assists		
5 + Blocks		
5 + Steals		
Led Team in Pts	2	2
Led Team in Reb		
20 + Points	2	2

## 52 ROKIA DOUMBIA

Stat	'18-'19	Career
Double Figure Pts	1	1
Double Figure Rebs		
Double-Doubles		
5 + Assists		
5 + Blocks		
5 + Steals		
Led Team in Pts		
Led Team in Reb		
20 + Points		

Career at Arkansas only





**@RazorbackWBB STATISTICS**  
**AR Combined Team Statistics (as of Nov 25, 2018)**  
**All games**



<b>RECORD:</b>	<b>OVERALL</b>	<b>HOME</b>	<b>AWAY</b>	<b>NEUTRAL</b>
ALL GAMES	4-2	1-1	1-0	2-1
CONFERENCE	0-0	0-0	0-0	0-0
NON-CONFERENCE	4-2	1-1	1-0	2-1

##	Player	gp-gs	min	avg	Total		3-Point		F-Throw		Rebounds				pf	dq	a	to	blk	stl	pts	avg
					fg-fga	fg%	3fg-fga	3fg%	ft-fga	ft%	off	def	tot	avg								
33	DUNGEE, Chelsea	6-6	170	28.3	29-63	.460	10-22	.455	25-34	.735	5	19	24	4.0	17	1	6	13	3	6	93	15.5
02	TOLEFREE, Alexis	6-6	166	27.7	29-94	.309	18-58	.310	14-19	.737	6	15	21	3.5	9	0	10	14	1	11	90	15.0
03	MONK, Malica	6-6	157	26.2	27-66	.409	3-13	.231	17-37	.459	6	12	18	3.0	18	0	17	12	0	9	74	12.3
10	WILLIAMS, Kiara	6-6	126	21.0	20-35	.571	0-0	.000	6-11	.545	22	25	47	7.8	13	0	5	7	3	9	46	7.7
00	GAULDEN, A'Tyanna	6-0	88	14.7	13-33	.394	0-1	.000	13-19	.684	1	8	9	1.5	5	0	14	9	0	6	39	6.5
14	MASON, Jailyn	6-5	152	25.3	14-39	.359	3-12	.250	5-6	.833	5	14	19	3.2	13	0	13	9	3	8	36	6.0
22	ZIMMERMAN, Bailey	6-0	137	22.8	12-27	.444	5-18	.278	7-13	.538	14	15	29	4.8	10	0	3	4	6	1	36	6.0
24	THOMAS, Taylah	6-0	100	16.7	8-17	.471	0-0	.000	4-12	.333	13	30	43	7.2	7	0	0	5	1	5	20	3.3
52	DOUMBIA, Rokia	5-0	38	7.6	4-7	.571	1-2	.500	2-3	.667	0	3	3	0.6	5	0	1	3	0	2	11	2.2
01	NORTHCROSS-BAKE	5-1	42	8.4	2-8	.250	1-5	.200	1-2	.500	1	3	4	0.8	6	0	4	2	0	3	6	1.2
30	WEAVER, Macy	2-0	14	7.0	0-0	.000	0-0	.000	0-0	.000	3	2	5	2.5	3	0	0	0	1	0	0	0.0
13	SPANGLER, Grayce	1-0	5	5.0	0-1	.000	0-1	.000	0-0	.000	0	0	0	0.0	2	0	0	0	0	0	0	0.0
20	STOUT, Sydney	2-0	5	2.5	0-0	.000	0-0	.000	0-0	.000	0	0	0	0.0	1	0	0	0	0	0	0	0.0
Team											11	7	18					2				
Total.....		6	1200		158-390	.405	41-132	.311	94-156	.603	87	153	240	40.0	109	1	73	80	18	60	451	75.2
Opponents.....		6	1198		144-370	.389	33-106	.311	69-110	.627	87	173	260	43.3	134	2	97	123	20	41	390	65.0

TEAM STATISTICS	AR	OPP
SCORING	451	390
Points per game	75.2	65.0
Scoring margin	+10.2	-
FIELD GOALS-ATT	158-390	144-370
Field goal pct	.405	.389
3 POINT FG-ATT	41-132	33-106
3-point FG pct	.311	.311
3-pt FG made per game	6.8	5.5
FREE THROWS-ATT	94-156	69-110
Free throw pct	.603	.627
F-Throws made per game	15.7	11.5
REBOUNDS	240	260
Rebounds per game	40.0	43.3
Rebounding margin	-3.3	-
ASSISTS	73	97
Assists per game	12.2	16.2
TURNOVERS	80	123
Turnovers per game	13.3	20.5
Turnover margin	+7.2	-
Assist/turnover ratio	0.9	0.8
STEALS	60	41
Steals per game	10.0	6.8
BLOCKS	18	20
Blocks per game	3.0	3.3
ATTENDANCE	7016	1831
Home games-Avg/Game	2-3508	1-1081
Neutral site-Avg/Game	-	3-250

Date	Opponent		Score	Att.
11/09/18	NORTHWESTERN STATE	w	98-53	5497
11/14/18	at UT Arlington	w	66-65	1081
11/18/18	NO. 22 ARIZONA STATE	L	85-88	1519
! 11/23/18	vs Tennessee State	w	79-55	750
! 11/24/18	vs Pittsburgh	L	54-61	0
! 11/25/18	vs Wisconsin	w	69-68	0

!-Challenge in Music City (Nashville, Tenn.)

#- Big 12/SEC Challenge (Ames, Iowa)

+--SEC Tournament (Greenville, S.C.)

\* = Conference game

Score by Periods	1st	2nd	3rd	4th	Totals
AR	120	100	107	124	451
Opponents	105	91	109	85	390

**@RazorbackWBB STATISTICS**  
**AR Game-by-Game Highs (as of Nov 25, 2018)**  
**All games**

Opponent	Date	Score	Points	Rebounds	Assists	Steals	Blocked shots
NORTHWESTERN STATE	11/09/18	98-53	19-TOLEFREE, Alexis	9-THOMAS, Taylah WILLIAMS, Kiara	4-MONK, Malica MASON, Jailyln	3-THOMAS, Taylah	1-ZIMMERMAN, Bail WILLIAMS, Kiara MASON, Jailyln
at UT Arlington	11/14/18	66-65	18-TOLEFREE, Alexis MONK, Malica	9-THOMAS, Taylah	3-MONK, Malica	3-MASON, Jailyln TOLEFREE, Alexis	1-DUNGEE, Chelsea ZIMMERMAN, Baile WILLIAMS, Kiara TOLEFREE, Alexis
NO. 22 ARIZONA STATE	11/18/18	85-88	22-TOLEFREE, Alexis	9-WILLIAMS, Kiara	3-MASON, Jailyln	3-WILLIAMS, Kiara	None
vs Tennessee State	11/23/18	79-55	16-DUNGEE, Chelsea	11-WILLIAMS, Kiara	4-MONK, Malica	3-MONK, Malica	3-ZIMMERMAN, Bail
vs Pittsburgh	11/24/18	54-61	12-TOLEFREE, Alexis	11-ZIMMERMAN, Bail	5-TOLEFREE, Alexis	4-TOLEFREE, Alexis	2-DUNGEE, Chelsea
vs Wisconsin	11/25/18	69-68	20-DUNGEE, Chelsea	12-THOMAS, Taylah	4-GAULDEN, A'Tyan	3-DUNGEE, Chelsea WILLIAMS, Kiara	None

**@RazorbackWBB STATISTICS**  
**AR Category Leaders (as of Nov 25, 2018)**  
**All games**

Points	G	Pts	Pts/G
DUNGEE, Chelsea	6	93	15.5
TOLEFREE, Alexis	6	90	15.0
MONK, Malica	6	74	12.3
WILLIAMS, Kiara	6	46	7.7
GAULDEN, A'Tyanna	6	39	6.5
MASON, Jailyn	6	36	6.0
ZIMMERMAN, Bailey	6	36	6.0
THOMAS, Taylah	6	20	3.3
DOUMBIA, Rokia	5	11	2.2
NORTHCROSS-BAKER, Ra	5	6	1.2

FG Percentage	FG	Att	Pct
DOUMBIA, Rokia	4	7	.571
WILLIAMS, Kiara	20	35	.571
THOMAS, Taylah	8	17	.471
DUNGEE, Chelsea	29	63	.460
ZIMMERMAN, Bailey	12	27	.444
MONK, Malica	27	66	.409
GAULDEN, A'Tyanna	13	33	.394
MASON, Jailyn	14	39	.359
TOLEFREE, Alexis	29	94	.309
NORTHCROSS-BAKER, Ra	2	8	.250
SPANGLER, Grayce	0	1	.000

3-Point Percentage	3FG	Att	Pct
DOUMBIA, Rokia	1	2	.500
DUNGEE, Chelsea	10	22	.455
TOLEFREE, Alexis	18	58	.310
ZIMMERMAN, Bailey	5	18	.278
MASON, Jailyn	3	12	.250
MONK, Malica	3	13	.231
NORTHCROSS-BAKER, Ra	1	5	.200
SPANGLER, Grayce	0	1	.000
GAULDEN, A'Tyanna	0	1	.000

Free Throw Percent	FG	Att	Pct
MASON, Jailyn	5	6	.833
TOLEFREE, Alexis	14	19	.737
DUNGEE, Chelsea	25	34	.735
GAULDEN, A'Tyanna	13	19	.684
DOUMBIA, Rokia	2	3	.667
WILLIAMS, Kiara	6	11	.545
ZIMMERMAN, Bailey	7	13	.538
NORTHCROSS-BAKER, Ra	1	2	.500
MONK, Malica	17	37	.459
THOMAS, Taylah	4	12	.333

Scoring Average	G	Pts	Avg/G
DUNGEE, Chelsea	6	93	15.5
TOLEFREE, Alexis	6	90	15.0
MONK, Malica	6	74	12.3
WILLIAMS, Kiara	6	46	7.7
GAULDEN, A'Tyanna	6	39	6.5
MASON, Jailyn	6	36	6.0
ZIMMERMAN, Bailey	6	36	6.0
THOMAS, Taylah	6	20	3.3
DOUMBIA, Rokia	5	11	2.2
NORTHCROSS-BAKER, Ra	5	6	1.2
SPANGLER, Grayce	1	0	0.0
WEAVER, Macy	2	0	0.0
STOUT, Sydney	2	0	0.0

Field Goal Attempts	G	Att	Att/G
TOLEFREE, Alexis	6	94	15.7
MONK, Malica	6	66	11.0
DUNGEE, Chelsea	6	63	10.5
MASON, Jailyn	6	39	6.5
WILLIAMS, Kiara	6	35	5.8

Field Goals Made	G	Made	Made/G
TOLEFREE, Alexis	6	29	4.8
DUNGEE, Chelsea	6	29	4.8
MONK, Malica	6	27	4.5
WILLIAMS, Kiara	6	20	3.3
MASON, Jailyn	6	14	2.3

3-Point FG Attempts	G	Att	Att/G
TOLEFREE, Alexis	6	58	9.7
DUNGEE, Chelsea	6	22	3.7
ZIMMERMAN, Bailey	6	18	3.0
MONK, Malica	6	13	2.2
MASON, Jailyn	6	12	2.0

3-Point FG Made	G	Made	Made/G
TOLEFREE, Alexis	6	18	3.0
DUNGEE, Chelsea	6	10	1.7
ZIMMERMAN, Bailey	6	5	0.8
MASON, Jailyn	6	3	0.5
MONK, Malica	6	3	0.5

Free Throw Attempts	G	Att	Att/G
MONK, Malica	6	37	6.2
DUNGEE, Chelsea	6	34	5.7
GAULDEN, A'Tyanna	6	19	3.2
TOLEFREE, Alexis	6	19	3.2
ZIMMERMAN, Bailey	6	13	2.2

Free Throws Made	G	Made	Made/G
DUNGEE, Chelsea	6	25	4.2
MONK, Malica	6	17	2.8
TOLEFREE, Alexis	6	14	2.3
GAULDEN, A'Tyanna	6	13	2.2
ZIMMERMAN, Bailey	6	7	1.2

**@RazorbackWBB STATISTICS**  
**AR Category Leaders (as of Nov 25, 2018)**  
**All games**

<b>Rebounds</b>	<b>G</b>	<b>Reb</b>	<b>Reb/G</b>
WILLIAMS, Kiara	6	47	7.8
THOMAS, Taylah	6	43	7.2
ZIMMERMAN, Bailey	6	29	4.8
DUNGEE, Chelsea	6	24	4.0
TOLEFREE, Alexis	6	21	3.5

<b>Rebound Average</b>	<b>G</b>	<b>Reb</b>	<b>Avg/G</b>
WILLIAMS, Kiara	6	47	7.8
THOMAS, Taylah	6	43	7.2
ZIMMERMAN, Bailey	6	29	4.8
DUNGEE, Chelsea	6	24	4.0
TOLEFREE, Alexis	6	21	3.5

<b>Offensive Rebounds</b>	<b>G</b>	<b>No.</b>	<b>Avg/G</b>
WILLIAMS, Kiara	6	22	3.7
ZIMMERMAN, Bailey	6	14	2.3
THOMAS, Taylah	6	13	2.2
MONK, Malica	6	6	1.0
TOLEFREE, Alexis	6	6	1.0

<b>Defensive Rebounds</b>	<b>G</b>	<b>No.</b>	<b>Avg/G</b>
THOMAS, Taylah	6	30	5.0
WILLIAMS, Kiara	6	25	4.2
DUNGEE, Chelsea	6	19	3.2
ZIMMERMAN, Bailey	6	15	2.5
TOLEFREE, Alexis	6	15	2.5

<b>Fouls</b>	<b>G</b>	<b>No.</b>	<b>Per/G</b>
MONK, Malica	6	18	3.0
DUNGEE, Chelsea	6	17	2.8
WILLIAMS, Kiara	6	13	2.2
MASON, Jailyn	6	13	2.2
ZIMMERMAN, Bailey	6	10	1.7

<b>Foulouts</b>	<b>G</b>	<b>No.</b>
DUNGEE, Chelsea	6	1

<b>Assists</b>	<b>G</b>	<b>No.</b>	<b>Ast/G</b>
MONK, Malica	6	17	2.8
GAULDEN, A'Tyanna	6	14	2.3
MASON, Jailyn	6	13	2.2
TOLEFREE, Alexis	6	10	1.7
DUNGEE, Chelsea	6	6	1.0

<b>Steals</b>	<b>G</b>	<b>No.</b>	<b>Stl/G</b>
TOLEFREE, Alexis	6	11	1.8
WILLIAMS, Kiara	6	9	1.5
MONK, Malica	6	9	1.5
MASON, Jailyn	6	8	1.3
DUNGEE, Chelsea	6	6	1.0
GAULDEN, A'Tyanna	6	6	1.0

<b>Blocked Shots</b>	<b>G</b>	<b>No.</b>	<b>Blk/G</b>
ZIMMERMAN, Bailey	6	6	1.0
DUNGEE, Chelsea	6	3	0.5
WILLIAMS, Kiara	6	3	0.5
MASON, Jailyn	6	3	0.5
THOMAS, Taylah	6	1	0.2
WEAVER, Macy	2	1	0.5
TOLEFREE, Alexis	6	1	0.2

<b>Minutes</b>	<b>G</b>	<b>No.</b>	<b>Min/G</b>
DUNGEE, Chelsea	6	170	28.3
TOLEFREE, Alexis	6	166	27.7
MONK, Malica	6	157	26.2
MASON, Jailyn	6	152	25.3
ZIMMERMAN, Bailey	6	137	22.8

<b>Turnovers</b>	<b>G</b>	<b>No.</b>	<b>TO/G</b>
TOLEFREE, Alexis	6	14	2.3
DUNGEE, Chelsea	6	13	2.2
MONK, Malica	6	12	2.0
GAULDEN, A'Tyanna	6	9	1.5
MASON, Jailyn	6	9	1.5



**@RazorbackWBB STATISTICS**  
**AR Team Game-by-Game Comparison (as of Nov 25, 2018)**  
**All games**

Opponent	1st	2nd	Score	Mar	Total FG	FG Pct	3-Pointers	3FG Pct	Free Throws	FT Pct	Rebounds	Assist	T/Over	Block	Steal	Fouls
NORTHWESTERN STATE	56/27	42/26	98-53	+45	34-59/19-57	.576/.333	11-23/8-21	.478/.381	19-33/7-12	.576/.583	38/34 +4	18/14	16/30	3/1	11/10	15/27
UT Arlington	36/31	30/34	66-65	+1	26-63/25-72	.413/.347	5-16/7-15	.313/.467	9-18/8-12	.500/.667	42/39 +3	8/18	19/15	4/4	10/12	20/19
NO. 22 ARIZONA STATE	42/46	43/42	85-88	(3)	32-67/31-63	.478/.492	6-19/5-16	.316/.313	15-22/21-33	.682/.636	35/43 (8)	9/16	13/17	0/2	6/6	22/21
Tennessee State	37/34	42/21	79-55	+24	23-62/17-63	.371/.270	7-20/4-17	.350/.235	26-38/17-26	.684/.654	41/53 (12)	16/11	14/23	8/3	12/8	21/27
Pittsburgh	18/25	36/36	54-61	(7)	19-74/25-52	.257/.481	7-35/2-9	.200/.222	9-17/9-14	.529/.643	40/48 (8)	11/17	8/22	3/4	10/4	14/18
Wisconsin	31/33	38/35	69-68	+1	24-65/27-63	.369/.429	5-19/7-28	.263/.250	16-28/7-13	.571/.538	44/43 +1	11/21	10/16	0/6	11/1	17/22

Note: Game totals are displayed in the format TEAM/OPPONENT for each category



**@RazorbackWBB STATISTICS**  
**AR Points-Rebounds-Assists (as of Nov 26, 2018)**  
**All games**



Opponent	Date	Score	00 GAULDEN,A'	01 NORTHCROSS	02 TOLEFREE,A	03 MONK,MALIC	10 WILLIAMS,K	13 SPANGLER,G	14 MASON,JAIL
NORTHWESTERN STATE	11/09/18	98-53 w	16-2-3	0-1-2	19-3-0	12-0-4	10-9-1	0-0-0	4-4-4
at UT Arlington	11/14/18	66-65 w	2-3-1	2-3-1	18-4-0	18-8-3	4-6-0	DNP	0-1-2
NO. 22 ARIZONA STATE	11/18/18	85-88 L	9-0-0	0-0-0	22-3-2	13-4-1	8-9-2	DNP	11-4-3
vs Tennessee State	11/23/18	79-55 w	9-2-3	4-0-1	14-3-2	13-2-4	6-11-2	DNP	4-2-2
vs Pittsburgh	11/24/18	54-61 L	2-2-3	0-0-0	12-6-5	5-3-2	5-4-0	DNP	5-1-1
vs Wisconsin	11/25/18	69-68 w	1-0-4	DNP	5-2-1	13-1-3	13-8-0	DNP	12-7-1

Opponent	Date	Score	20 STOUT,SYDN	22 ZIMMERMAN,	24 THOMAS,TAY	30 WEAVER,MAC	33 DUNGEE,CHE	52 DOUMBIA,RO
NORTHWESTERN STATE	11/09/18	98-53 w	0-0-0	4-4-1	11-9-0	0-0-0	11-3-3	11-1-0
at UT Arlington	11/14/18	66-65 w	DNP	4-5-0	2-9-0	DNP	16-3-1	0-0-0
NO. 22 ARIZONA STATE	11/18/18	85-88 L	DNP	2-1-0	0-2-0	DNP	20-6-1	0-1-0
vs Tennessee State	11/23/18	79-55 w	0-0-0	12-4-1	1-3-0	0-5-0	16-6-0	0-0-1
vs Pittsburgh	11/24/18	54-61 L	DNP	11-11-0	4-8-0	DNP	10-1-0	DNP
vs Wisconsin	11/25/18	69-68 w	DNP	3-4-1	2-12-0	DNP	20-5-1	0-1-0

**0 A'Tyanna Gaulden | So. | 5-7 | G | Ocilla, Ga. (Americus Sumter HS) | Florida State**
**SEASON HIGHS**

Points	16	NSU	11-9-18
FG Made	6	NSU	11-9-18
FG Att	9	TSU	11-23-18
3FG Made			
3FG Att	1	Pitt	11-24-18
FT Made	5	#22 ASU	11-18-18
FT Att	7	NSU	11-9-18
Off. Reb.	1	Pitt	11-24-18
Def. Reb.	3	at UTA	11-14-18
Rebounds	3	at UTA	11-14-18
Assists	4	Wisconsin	11-25-18
Blocks			
Steals	2	NSU	11-9-18
Minutes	19	TSU	11-23-18

**CAREER HIGHS**

Points	16	NSU	11-9-18
FG Made	6	NSU	11-9-18
FG Att	9	TSU	11-23-18
3FG Made			
3FG Att	1	Pitt	11-24-18
FT Made	5	#22 ASU	11-18-18
FT Att	7	NSU	11-9-18
Off. Reb.	1	Pitt	11-24-18
Def. Reb.	3	at UTA	11-14-18
Rebounds	3	at UTA	11-14-18
Assists	4	Wisconsin	11-25-18
Blocks			
Steals	2	NSU	11-9-18
Minutes	19	TSU	11-23-18

\*Most Recent

**2018-19 GAME-BY-GAME**

Opponent	M	FG	3P	FT	REB	A	TO	B	S	PT
NSU	17	6	-	4	2	3	4	-	2	16
at UTA	11	1	-	-	3	1	3	-	-	2
Arizona St.	13	2	-	5	-	-	1	-	1	9
Tenn. State	19	3	-	3	2	3	-	-	-	1
Pittsburgh	11	1	-	-	2	3	-	-	1	2
Wisconsin	17	-	-	1	-	4	1	-	1	1
ORU										
Iowa State										
Tenn. Tech										
ACU										
Prairie View										
Nebraska										
Tulsa										
Jackson St										
Miss State										
Ole Miss										
Missouri										
Vanderbilt										
Tennessee										
Alabama										
Florida										
Georgia										
S. Carolina										
LSU										
Auburn										
Kentucky										
Georgia										
Ole Miss										
Missouri										
Texas A&M										
SEC Tournament										

**NOTES**

- One of seven players in double figures in the season opener with 16 points versus Northwestern State.
- Redshirted the 2017-18 season due to NCAA transfer rules.
- Played in 21 games averaging 1.1 ppg, 0.6 rpg and 1.0 apg in 5.7 minutes per game at FSU.
- As a prep player, was ranked sixth among all guard in the ESPNW 2016 recruiting class and was No. 23 overall ... Five-star player who earned Atlanta Journal Constitution Player of the Year after her senior season.

**CAREER STATISTICS**

Year	GP-GS	Min	Avg	FG	Total FGA	Pct	3-Point FG	3-Point FGA	3-Point Pct	FT	F-Throw FTA	Pct	Off	Rebounds Def	Tot	Avg	PF	FO	Ast	TO	Blk	Stl	Pts	Avg
2015-16*	21-0	119	5.7	7	15	.467	0	0	.000	9	14	.643	2	10	12	0.6	24	1	22	15	0	13	23	1.1
2018-19	6-0	88	14.7	13	33	.394	0	1	.000	13	19	.684	1	8	9	1.5	5	0	14	9	0	6	39	6.5
<b>TOTAL**</b>	<b>6-0</b>	<b>88</b>	<b>14.7</b>	<b>13</b>	<b>33</b>	<b>.394</b>	<b>0</b>	<b>1</b>	<b>.000</b>	<b>13</b>	<b>19</b>	<b>.684</b>	<b>1</b>	<b>8</b>	<b>9</b>	<b>1.5</b>	<b>5</b>	<b>0</b>	<b>14</b>	<b>9</b>	<b>0</b>	<b>6</b>	<b>39</b>	<b>6.5</b>

\*at Florida State | \*\*Totals from Arkansas only

**1 Raven Northcross Baker | Sr. | 5-9 | G | Malvern, Ark. (Malvern HS) | Chipola Junior College**
**SEASON HIGHS**

Points	4	TSU	11-23-18
FG Made	1	TSU	11-23-18*
FG Att	5	at UTA	11-14-18
3FG Made	1	TSU	11-23-18
3FG Att	2	TSU	11-23-18*
FT Made	1	TSU	11-23-18
FT Att	2	TSU	11-23-18
Off. Reb.	1	NSU	11-9-18
Def. Reb.	3	at UTA	11-14-18
Rebounds	3	at UTA	11-14-18
Assists	2	NSU	11-9-18
Blocks			
Steals	2	TSU	11-23-18
Minutes	16	NSU	11-9-18

**CAREER HIGHS (AT ARKANSAS)**

Points	22	UTA	12-17-17
FG Made	8	UTA	12-17-17
FG Att	13	Vanderbilt	2-28-18
3FG Made	6	UTA	12-17-17
3FG Att	12	Vanderbilt	2-28-18
FT Made	7	ACU	11-29-17
FT Att	8	ACU	11-29-17
Off. Reb.	3	Grambling	12-18-17
Def. Reb.	7	Tulsa	12-10-17
Rebounds	9	Tulsa	12-10-17
Assists	7	Vanderbilt	2-28-18
Blocks	1	at #9 SC	1-25-18*
Steals	3	UTA	12-17-17
Minutes	29	Florida	1-18-18

\*Most Recent

**2018-19 GAME-BY-GAME**

Opponent	M	FG	3P	FT	REB	A	TO	B	S	PT
NSU	16	-	-	-	1	2	1	-	1	-
at UTA	10	1	-	-	3	1	-	-	-	2
Arizona St.	4	-	-	-	-	-	1	-	-	-
Tenn. State	9	1	1	1	-	1	-	-	2	4
Pittsburgh	3	-	-	-	-	-	-	-	-	-
Wisconsin	DNP									
ORU										
Iowa State										
Tenn. Tech										
ACU										
Prairie View										
Nebraska										
Tulsa										
Jackson St										
Miss State										
Ole Miss										
Missouri										
Vanderbilt										
Tennessee										
Alabama										
Florida										
Georgia										
S. Carolina										
LSU										
Auburn										
Kentucky										
Georgia										
Ole Miss										
Missouri										
Texas A&M										
SEC Tournament										

**NOTES**

- Three games in double figures as a junior.
- Ten games with two or more 3-point field goals.
- Arkansas Athletics Department Honor Roll (3.0-3.49 GPA) | Fall 2017.
- 17 points in exhibition (2017) including 12 points in the first quarter.
- Had her first 20+ point game as a Razorback with 22 points against UTA as a junior.

**CAREER STATISTICS**

Year	GP-GS	Min	Avg	FG	Total FGA	Pct	3-Point FG	3-Point FGA	3-Point Pct	FT	F-Throw FTA	Pct	Off	Rebounds Def	Tot	Avg	PF	FO	Ast	TO	Blk	Stl	Pts	Avg
2015-16*	26-14	69	2.7	97	229	.424	58	149	.389	21	33	.636	47	39	86	3.3	6	-	46	32	-	58	273	10.5
2016-17*	33-33	210	6.4	171	433	.395	77	247	.312	54	83	.651	74	77	151	4.6	9	-	77	44	3	56	473	14.3
Totals*	59-47	279	4.7	268	662	.405	135	396	.341	75	116	.647	121	116	237	4.0	15	-	123	76	3	114	746	12.6
2017-18	31-1	603	19.5	57	193	.295	37	137	.270	22	33	.667	32	50	82	2.6	47	1	50	28	4	18	173	5.6
2018-19	5-1	42	8.4	2	8	.250	1	5	.200	1	2	.500	1	3	4	0.8	6	0	4	2	0	3	6	1.2
<b>TOTAL</b>	<b>36-2</b>	<b>645</b>	<b>17.9</b>	<b>59</b>	<b>201</b>	<b>.294</b>	<b>38</b>	<b>142</b>	<b>.268</b>	<b>23</b>	<b>35</b>	<b>.657</b>	<b>33</b>	<b>53</b>	<b>86</b>	<b>2.4</b>	<b>53</b>	<b>1</b>	<b>54</b>	<b>30</b>	<b>4</b>	<b>21</b>	<b>179</b>	<b>5.0</b>

\*At Chipola Junior College \*\*Totals are from Arkansas only.

## 2 Alexis Tolefree | Jr. | 5-8 | G | Conway, Ark. (Conway HS) | Jones County JC



### SEASON HIGHS

Points	22	#22 ASU	11-18-18
FG Made	8	#22 ASU	11-18-18
FG Att	23	Pitt	11-24-18
3FG Made	5	NSU	11-9-18
3FG Att	16	Pitt	11-24-18
FT Made	4	NSU	11-9-18
FT Att	6	NSU	11-9-18
Off. Reb.	2	Wisconsin	11-25-18
Def. Reb.	4	Pitt	11-24-18
Rebounds	6	Pitt	11-24-18
Assists	5	Pitt	11-24-18
Blocks	1	at UTA	11-14-18
Steals	4	Pitt	11-24-18
Minutes	36	at UTA	11-14-18

### CAREER HIGHS

Points	22	#22 ASU	11-18-18
FG Made	8	#22 ASU	11-18-18
FG Att	23	Pitt	11-24-18
3FG Made	5	NSU	11-9-18
3FG Att	16	Pitt	11-24-18
FT Made	4	NSU	11-9-18
FT Att	6	NSU	11-9-18
Off. Reb.	2	Wisconsin	11-25-18
Def. Reb.	4	Pitt	11-24-18
Rebounds	6	Pitt	11-24-18
Assists	5	Pitt	11-24-18
Blocks	1	at UTA	11-14-18
Steals	4	Pitt	11-24-18
Minutes	36	at UTA	11-14-18

\*Most Recent

### 2018-19 GAME-BY-GAME

Opponent	M	FG	3P	FT	REB	A	TO	B	S	PT
NSU	21	5	5	4	3	-	3	-	2	19
at UTA	36	6	3	3	4	-	1	1	3	18
Arizona St.	33	8	3	3	3	2	4	-	1	22
Tenn. State	27	4	3	3	3	2	3	-	1	14
Pittsburgh	32	4	3	1	6	5	2	-	4	12
Wisconsin	17	2	1	-	2	1	1	-	-	5
ORU										
Iowa State										
Tenn. Tech										
ACU										
Prairie View										
Nebraska										
Tulsa										
Jackson St										
Miss State										
Ole Miss										
Missouri										
Vanderbilt										
Tennessee										
Alabama										
Florida										
Georgia										
S. Carolina										
LSU										
Auburn										
Kentucky										
Georgia										
Ole Miss										
Missouri										
Texas A&M										
SEC Tournament										

### NOTES

- Arkansas career-best 22 points against No. 22 Arizona State.
- Scored in double figures in five games this year.
- Two-Time Junior College All American.
- Scored 50 points (16-26) vs. Copiah-Lincoln ... 42 points at Meridian (16-22) and 31 points vs. Copiah-Lincoln (8-22, 5-14, 10-10) in 2017-18 at Jones County.
- Ranked second in the MACJC and seventh nationally in scoring.
- Ranked third in the nation in 3-point field goals per game.
- Lead team to Region 23 Title- with 50 points vs. Copiah-Lincoln.

### CAREER STATISTICS

Year	GP-GS	Min	Avg	FG	Total FGA	Pct	3-Point FGA	Pct	F-Throw FT	FTA	Pct	Off	Rebounds Def	Tot	Avg	PF	FO	Ast	TO	Blk	Stl	Pts	Avg
2016-17*	NA																						
2017-18*	29-27	867	29.9	205	476	.431	104	.286	104	127	.819	19	73	92	3.2	64	0	75	58	13	58	618	21.3
2018-19**	6-6	166	27.7	29	94	.309	18	.58	14	19	.737	6	15	21	3.5	9	0	10	14	1	11	90	15.0
<b>TOTAL**</b>	<b>6-6</b>	<b>166</b>	<b>27.7</b>	<b>29</b>	<b>94</b>	<b>.309</b>	<b>18</b>	<b>.58</b>	<b>14</b>	<b>19</b>	<b>.737</b>	<b>6</b>	<b>15</b>	<b>21</b>	<b>3.5</b>	<b>9</b>	<b>0</b>	<b>10</b>	<b>14</b>	<b>1</b>	<b>11</b>	<b>90</b>	<b>15.0</b>

\*at Jones County JC | \*\*Totals from Arkansas only

## 3 Malica Monk | Sr. | 5-5 | G | N. Little Rock, Ark. (N. Little Rock HS)



### SEASON HIGHS

Points	18	at UTA	11-14-18
FG Made	7	at UTA	11-14-18
FG Att	15	at UTA	11-14-18
3FG Made	2	NSU	11-9-18
3FG Att	4	Pitt	11-24-18
FT Made	4	Pitt	11-24-18*
FT Att	8	at UTA	11-14-18
Off. Reb.	3	at UTA	11-14-18
Def. Reb.	5	at UTA	11-14-18
Rebounds	8	at UTA	11-14-18
Assists	4	TSU	11-23-18*
Blocks			
Steals	3	TSU	11-23-18
Minutes	31	TSU	11-23-18

### CAREER HIGHS

Points	25	#11 Tennessee	2-8-18
FG Made	9	#11 Tennessee	2-8-18*
FG Att	28	Florida	1-18-18
3FG Made	4	at Kentucky	2-15-18*
3FG Att	10	at Kentucky	2-15-18
FT Made	12	UTA	12-17-17
FT Att	12	UTA	12-17-17
Off. Reb.	3	Alabama	1-7-18*
Def. Reb.	8	Samford	11-12-17
Rebounds	9	Samford	11-12-17
Assists	10	Grambling	12-18-17
Blocks	3	LSU	1-8-17
Steals	6	Kentucky	2-16-17*
Minutes	40	at Vanderbilt	2-25-18*

\*Most Recent

### 2018-19 GAME-BY-GAME

Opponent	M	FG	3P	FT	REB	A	TO	B	S	PT
NSU	21	4	2	2	-	4	3	-	1	12
at UTA	19	7	-	4	8	3	4	-	2	18
Arizona St.	17	5	-	3	4	1	1	-	-	13
Tenn. State	21	4	1	4	2	4	3	-	3	13
Pittsburgh	31	2	-	1	3	2	1	-	2	5
Wisconsin	27	5	-	3	1	3	-	-	1	13
ORU										
Iowa State										
Tenn. Tech										
ACU										
Prairie View										
Nebraska										
Tulsa										
Jackson St										
Miss State										
Ole Miss										
Missouri										
Vanderbilt										
Tennessee										
Alabama										
Florida										
Georgia										
S. Carolina										
LSU										
Auburn										
Kentucky										
Georgia										
Ole Miss										
Missouri										
Texas A&M										
SEC Tournament										

### NOTES

- Five games in double figures this season.
- Game winning layup helping Arkansas erase a 15-point deficit to Wisconsin.
- Team's leading scorer from a year ago.
- Forty-four career games with double figure scoring including 27 as a junior and one as a senior.
- Eighteen career games with five or more assists.
- Arkansas Athletics Department Honor Roll (3.0-3.49 GPA) | Fall 2016, Fall 2017, Spring 2018.
- Malica Monk scored 494 points in 2017-18. Her single season best was 247 points set in 27 games in 2016-17.
- Will graduate in December with a degree in Sports & Recreation Management.

### CAREER STATISTICS

Year	GP-GS	Min	Avg	FG	Total FGA	Pct	3-Point FGA	Pct	F-Throw FT	FTA	Pct	Off	Rebounds Def	Tot	Avg	PF	FO	Ast	TO	Blk	Stl	Pts	Avg
2015-16	27-5	461	17.1	48	136	.353	2	.10	12	19	.632	6	23	29	1.1	60	2	47	44	5	23	110	4.1
2016-17	27-27	842	31.2	96	230	.417	7	.25	48	71	.676	29	52	81	3.0	79	2	83	59	7	62	247	9.1
2017-18	31-31	1061	34.2	171	488	.350	38	.126	114	146	.781	21	84	105	3.4	69	1	122	70	6	50	494	15.9
2018-19	6-6	157	26.2	27	66	.409	3	.13	37	37	.459	6	12	18	3.0	18	0	17	12	0	9	74	12.3
<b>TOTAL</b>	<b>91-69</b>	<b>2521</b>	<b>27.7</b>	<b>342</b>	<b>920</b>	<b>.372</b>	<b>50</b>	<b>.174</b>	<b>191</b>	<b>273</b>	<b>.700</b>	<b>62</b>	<b>171</b>	<b>233</b>	<b>2.6</b>	<b>226</b>	<b>5</b>	<b>269</b>	<b>185</b>	<b>18</b>	<b>144</b>	<b>925</b>	<b>10.2</b>



**10 Kiara Williams | Jr. | 6-1 | F/C | Little Rock, Ark. (Little Rock Central HS)**
**SEASON HIGHS**

Points	13	Wisconsin	11-25-18
FG Made	5	Wisconsin	11-25-18*
FG Att.	10	Wisconsin	11-25-18
3FG Made			
3FG Att.			
FT Made	3	Wisconsin	11-25-18
FT Att.	5	Wisconsin	11-25-18
Off. Reb.	5	NSU	11-9-18
Def. Reb.	8	TSU	11-23-18
Rebounds	11	TSU	11-23-18
Assists	2	TSU	11-23-18*
Blocks	1	TSU	11-23-18*
Steals	3	TSU	11-23-18*
Minutes	25	#22 ASU	11-18-18

**CAREER HIGHS**

Points	25	Vanderbilt	2-28-18
FG Made	11	at Vanderbilt	2-28-18
FG Att.	13	at Vanderbilt	2-28-18
3FG Made	1	#5 Miss. St.	1-4-18
3FG Att.	1	#5 Miss. St.	1-4-18
FT Made	7	LSU	2-20-18
FT Att.	11	Charlotte	12-6-17
Off. Reb.	8	Grambling	12-18-17*
Def. Reb.	11	at Kansas	12-3-17
Rebounds	16	Grambling	12-18-17*
Assists	2	TSU	11-23-18*
Blocks	4	Ole Miss	12-31-17*
Steals	4	Charlotte	12-6-17
Minutes	32	Vanderbilt	2-28-18

\*Most Recent

**2018-19 GAME-BY-GAME**

Opponent	M	FG	3P	FT	REB	A	TO	B	S	PT
NSU	19	5	-	-	9	1	2	1	1	10
at UTA	18	2	9	9	6	-	2	1	-	4
Arizona St.	25	4	-	-	9	2	1	-	3	8
Tenn. State	20	2	-	2	11	2	1	1	2	6
Pittsburgh	21	2	-	1	4	-	-	-	-	5
Wisconsin	23	5	-	3	8	-	1	-	3	13
ORU										
Iowa State										
Tenn. Tech										
ACU										
Prairie View										
Nebraska										
Tulsa										
Jackson St										
Miss State										
Ole Miss										
Missouri										
Vanderbilt										
Tennessee										
Alabama										
Florida										
Georgia										
S Carolina										
LSU										
Auburn										
Kentucky										
Georgia										
Ole Miss										
Missouri										
Texas A&M										
SEC Tournament										

**NOTES**

- Team's leading rebounder from a year ago.
- Fourteen career games in double figure scoring and nine career games with double digit rebounds.
- Led Arkansas with a career-best 25 points in SEC Tournament win over Vanderbilt.
- Career-best 16 rebounds, including 11 defensive rebounds, twice (Kansas & Grambling).
- Double-Doubles: First career double-double with 11 points and 11 rebounds against New Mexico State ... Second career double-double with 12 points and tied her career-best with 16 rebounds versus Grambling State ... Third at Auburn with a career-best 15 points and 14 rebounds.
- Made her first career 3-point basket in the opening shot of the No. 5/3 Mississippi State game.

**CAREER STATISTICS**

Year	GP-GS	Min	Avg	FG	Total FGA	Pct	3-Point FG	3-Point FGA	3-Point Pct	F-Throw FT	F-Throw FTA	F-Throw Pct	Off	Rebounds Def	Rebounds Tot	Avg	PF	FO	Ast	TO	Blk	Stl	Pts	Avg
2016-17	20-5	227	11.4	26	48	.542	0	0	.000	10	26	.385	24	31	55	2.8	34	1	3	15	5	9	62	3.1
2017-18	31-30	602	19.4	105	201	.522	1	3	.333	43	75	.573	92	119	211	6.8	68	1	7	28	29	33	254	8.2
2018-19	6-6	126	21.0	20	35	.571	0	0	.000	6	11	.545	22	25	47	7.8	13	0	5	7	3	9	46	7.7
<b>TOTAL</b>	<b>57-41</b>	<b>955</b>	<b>16.8</b>	<b>151</b>	<b>284</b>	<b>.532</b>	<b>1</b>	<b>3</b>	<b>.333</b>	<b>59</b>	<b>112</b>	<b>.527</b>	<b>138</b>	<b>175</b>	<b>313</b>	<b>5.5</b>	<b>115</b>	<b>2</b>	<b>15</b>	<b>50</b>	<b>37</b>	<b>51</b>	<b>362</b>	<b>6.4</b>

**13 Grace Spangler | So. | 5-10 | G | Fayetteville, Ark. (Fayetteville HS)**
**SEASON HIGHS**

Points			
FG Made			
FG Att.			
3FG Made			
3FG Att.	1	NSU	11-9-18
FT Made			
FT Att.			
Off. Reb.			
Def. Reb.			
Rebounds			
Assists			
Blocks			
Steals			
Minutes	5	NSU	11-9-18

**CAREER HIGHS**

Points	4	#5 Miss. St.	1-4-18
FG Made	2	#5 Miss. St.	1-4-18
FG Att.	3	#5 Miss. St.	1-4-18
3FG Made	-		
3FG Att.	2	ACU	11-29-17
FT Made	3	UTA	12-17-17
FT Att.	4	#13 Missouri	2-12-18
Off. Reb.	1	#5 Miss. St.	1-4-18
Def. Reb.	1	at ASU	12-21-17*
Rebounds	1	#5 Miss. St.	1-4-18*
Assists	1	at Kentucky	2-15-18
Blocks	-		
Steals	1	at #9 SC	1-25-18
Minutes	9	at #9 SC	1-25-18

\*Most Recent

**2018-19 GAME-BY-GAME**

Opponent	M	FG	3P	FT	REB	A	TO	B	S	PT
NSU	5	-	-	-	-	-	-	-	-	-
at UTA	DNP									
Arizona St.	DNP									
Tenn. State	DNP									
Pittsburgh	DNP									
Wisconsin	DNP									
ORU										
Iowa State										
Tenn. Tech										
ACU										
Prairie View										
Nebraska										
Tulsa										
Jackson St										
Miss State										
Ole Miss										
Missouri										
Vanderbilt										
Tennessee										
Alabama										
Florida										
Georgia										
S Carolina										
LSU										
Auburn										
Kentucky										
Georgia										
Ole Miss										
Missouri										
Texas A&M										
SEC Tournament										

**NOTES**

- Arkansas Athletics Department Athletics Director's List (3.5-3.99 GPA) | Fall 2017, Spring 2018.
- Scored her first points as a Razorback going 3-for-3 from the line in a win over UTA as a freshman.
- Arkansas Ties: Father Shannon lettered as a linebacker (1989) and mother, Stacy, was a member of the Pom Squad at Arkansas

**CAREER STATISTICS**

Year	GP-GS	Min	Avg	FG	Total FGA	Pct	3-Point FG	3-Point FGA	3-Point Pct	F-Throw FT	F-Throw FTA	F-Throw Pct	Off	Rebounds Def	Rebounds Tot	Avg	PF	FO	Ast	TO	Blk	Stl	Pts	Avg
2017-18	17-0	67	3.9	2	16	.125	0	6	.000	4	10	.400	1	4	5	0.3	13	0	1	5	0	1	8	0.5
2018-19	1-0	5	5.0	0	1	.000	0	1	.000	0	0	.000	0	0	0	0.0	2	0	0	0	0	0	0	0.0
<b>TOTAL</b>	<b>18-0</b>	<b>72</b>	<b>4.0</b>	<b>2</b>	<b>17</b>	<b>.118</b>	<b>0</b>	<b>7</b>	<b>.000</b>	<b>4</b>	<b>10</b>	<b>.400</b>	<b>1</b>	<b>4</b>	<b>5</b>	<b>0.3</b>	<b>15</b>	<b>0</b>	<b>1</b>	<b>5</b>	<b>0</b>	<b>1</b>	<b>8</b>	<b>0.4</b>

## 14 Jailyn Mason | Jr. | 5-9 | G | Mason, Ohio (William Mason HS)



### SEASON HIGHS

Points	12	Wisconsin	11-25-18
FG Made	5	Wisconsin	11-25-18*
FG Att	14	Wisconsin	11-25-18
3FG Made	1	Wisconsin	11-25-18*
3FG Att	4	Wisconsin	11-25-18
FT Made	2	TSU	11-23-18*
FT Att	2	Wisconsin	11-25-18*
Off. Reb.	3	Wisconsin	11-25-18
Def. Reb.	4	Wisconsin	11-25-18*
Rebounds	7	Wisconsin	11-25-18
Assists	4	NSU	11-9-18
Blocks	2	TSU	11-23-18
Steals	3	at UTA	11-14-18
Minutes	36	Wisconsin	11-25-18

### CAREER HIGHS

Points	19	ORU	12-21-16
FG Made	9	No. 11 Tenn.	2-8-18*
FG Att	21	No. 11 Tenn.	2-8-18
3FG Made	4	at Kentucky	2-15-18
3FG Att	8	at Kentucky	2-15-18
FT Made	4	#13 Missouri	2-12-18*
FT Att	4	#13 Missouri	2-12-18*
Off. Reb.	4	Texas Tech	12-3-16
Def. Reb.	7	Grambling	12-18-17*
Rebounds	9	Texas Tech	12-3-16
Assists	11	HBU	12-28-16
Blocks	3	SHSU	11-10-17
Steals	5	at Georgia	1-11-18
Minutes	40	Vanderbilt	2-28-18*

\*Most Recent

### 2018-19 GAME-BY-GAME

Opponent	M	FG	3P	FT	REB	A	TO	B	S	PT
NSU	19	1	-	2	4	4	2	1	-	4
at UTA	23	-	-	-	1	2	1	-	3	-
Arizona St.	31	5	1	-	4	3	-	-	1	11
Tenn. State	22	1	-	2	2	2	4	2	1	4
Pittsburgh	21	2	1	-	1	1	1	-	1	5
Wisconsin	36	5	1	1	7	1	1	-	2	12
ORU										
Iowa State										
Tenn. Tech										
ACU										
Prairie View										
Nebraska										
Tulsa										
Jackson St										
Miss State										
Ole Miss										
Missouri										
Vanderbilt										
Tennessee										
Alabama										
Florida										
Georgia										
S Carolina										
LSU										
Auburn										
Kentucky										
Georgia										
Ole Miss										
Missouri										
Texas A&M										
SEC Tournament										

### NOTES

- Has a Jordan shoe collection and is interning with the Athletics Department photographer.
- Member of the SEC WBB Leadership Council.
- SEC All-Freshman Team | 2017
- Two-time SEC Freshman of the Week | 2016-17
- She has 21 games in double figure scoring including a streak of five in a row twice as a sophomore and an eight-game streak that was snapped at Alabama last season.
- Scored 12 points, all in the second half, fueling a 15-point comeback win versus Wisconsin.

### CAREER STATISTICS

Year	GP-GS	Min	Avg	FG	Total FGA	Pct	3-Point FG	3-Point FGA	3-Point Pct	F-Throw FT	F-Throw FTA	Pct	Off	Rebounds Def	Tot	Avg	PF	FO	Ast	TO	Blk	Stl	Pts	Avg
2016-17	30-30	894	29.8	100	256	.391	19	53	.358	7	11	.636	21	96	117	3.9	72	2	93	56	8	31	226	7.5
2017-18	31-31	1031	33.3	139	344	.404	47	130	.362	16	19	.842	17	111	128	4.1	56	1	92	67	14	34	341	11.0
2018-19	6-5	152	25.3	14	39	.359	3	12	.250	5	6	.833	5	14	19	3.2	13	0	13	9	3	8	36	6.0
<b>TOTAL</b>	<b>67-66</b>	<b>2077</b>	<b>31.0</b>	<b>253</b>	<b>639</b>	<b>.396</b>	<b>69</b>	<b>195</b>	<b>.354</b>	<b>28</b>	<b>36</b>	<b>.778</b>	<b>43</b>	<b>221</b>	<b>264</b>	<b>3.9</b>	<b>141</b>	<b>3</b>	<b>198</b>	<b>132</b>	<b>25</b>	<b>73</b>	<b>603</b>	<b>9.0</b>

## 20 Sydney Stout | Jr. | 6-0 | F | Bixby, Okla. (Bixby HS)



### SEASON HIGHS

Points		NSU	11-9-18
FG Made			
FG Att			
3FG Made			
3FG Att			
FT Made			
FT Att			
Off. Reb.			
Def. Reb.			
Rebounds			
Assists			
Blocks			
Steals			
Minutes	4	NSU	11-9-18

### CAREER HIGHS

Points	8	HBU	12-28-16
FG Made	3	HBU	12-28-16
FG Att	5	HBU	12-28-16
3FG Made	2	HBU	12-28-16
3FG Att	4	HBU	12-28-16
FT Made	2	Texas A&M	1-12-17
FT Att	4	Texas A&M	1-12-17
Off. Reb.	1	SHSU	11-10-17*
Def. Reb.	6	HBU	12-28-16
Rebounds	6	HBU	12-28-16
Assists	1	#13 Missouri	2-12-18*
Blocks	1	UIM	11-13-16
Steals	2	at S Carolina	1-25-18
Minutes	15	HBU	12-28-16

\*Most Recent

### 2018-19 GAME-BY-GAME

Opponent	M	FG	3P	FT	REB	A	TO	B	S	PT
NSU	4	-	-	-	-	-	-	-	-	-
at UTA	DNP									
Arizona St.	DNP									
Tenn. State	1	-	-	-	-	-	-	-	-	-
Pittsburgh	DNP									
Wisconsin	DNP									
ORU										
Iowa State										
Tenn. Tech										
ACU										
Prairie View										
Nebraska										
Tulsa										
Jackson St										
Miss State										
Ole Miss										
Missouri										
Vanderbilt										
Tennessee										
Alabama										
Florida										
Georgia										
S Carolina										
LSU										
Auburn										
Kentucky										
Georgia										
Ole Miss										
Missouri										
Texas A&M										
SEC Tournament										

### NOTES

- Arkansas Athletics Department Honor Roll (3.0-3.49 GPA) | Fall 2016.
- Arkansas Athletics Depart. Academic Champion (4.0 GPA) | Spring 2017, Fall 2017, Spring 2018.
- SEC First Year Academic Honor Roll (2016-2017)
- Plans to graduate a year early with a degree in Marketing.

### CAREER STATISTICS

Year	GP-GS	Min	Avg	FG	Total FGA	Pct	3-Point FG	3-Point FGA	3-Point Pct	F-Throw FT	F-Throw FTA	Pct	Off	Rebounds Def	Tot	Avg	PF	FO	Ast	TO	Blk	Stl	Pts	Avg
2016-17	15-0	72	4.8	5	14	.357	4	12	.333	2	4	.500	2	9	11	0.7	15	0	1	2	1	0	16	1.1
2017-18	16-0	84	5.3	1	9	.111	1	6	.167	3	6	.500	4	6	10	0.6	4	0	3	3	0	3	6	0.4
2018-19	2-0	5	2.5	0	0	.000	0	0	.000	0	0	.000	0	0	0	0.0	1	0	0	0	0	0	0	0.0
<b>TOTAL</b>	<b>33-0</b>	<b>161</b>	<b>4.9</b>	<b>6</b>	<b>23</b>	<b>.261</b>	<b>5</b>	<b>18</b>	<b>.278</b>	<b>5</b>	<b>10</b>	<b>.500</b>	<b>6</b>	<b>15</b>	<b>21</b>	<b>0.6</b>	<b>20</b>	<b>0</b>	<b>4</b>	<b>5</b>	<b>1</b>	<b>3</b>	<b>22</b>	<b>0.7</b>

**22 Bailey Zimmerman | Sr. | 6-0 | F | St. Vincent, Ark. (Wonderview HS)**
**SEASON HIGHS**

Points	12	TSU	11-23-18
FG Made	4	Pitt	11-24-18
FG Att	8	Pitt	11-24-18
3FG Made	2	Pitt	11-24-18*
3FG Att	5	Pitt	11-24-18
FT Made	4	TSU	11-23-18
FT Att	6	TSU	11-23-18
Off. Reb.	7	Pitt	11-24-18
Def. Reb.	4	Pitt	11-24-18*
Rebounds	11	Pitt	11-24-18
Assists	1	Wisconsin	11-25-18*
Blocks	1	Pitt	11-24-18*
Steals	1	Pitt	11-24-18*
Minutes	28	Pitt	11-24-18

**CAREER HIGHS**

Points	14	#13 Missouri	2-12-18*
FG Made	4	Pitt	11-24-18
FG Att	11	#11 Tennessee	2-8-18*
3FG Made	3	at Kentucky	2-15-18*
3FG Att	8	at Auburn	1-14-18
FT Made	4	TSU	11-23-18*
FT Att	6	TSU	11-23-18*
Off. Reb.	7	Pitt	11-24-18
Def. Reb.	6	Alabama	1-15-17
Rebounds	11	Pitt	11-24-18
Assists	3	at Kentucky	2-15-18*
Blocks	3	Nebraska	11-16-17*
Steals	2	Kentucky	1-29-18*
Minutes	40	#11 Tennessee	2-8-18

\*Most Recent

**2018-19 GAME-BY-GAME**

Opponent	M	FG	3P	FT	REB	A	TO	B	S	PT
NSU	17	1	1	1	4	1	-	1	-	4
at UTA	21	2	-	-	5	-	1	1	-	4
Arizona St.	21	1	-	-	1	-	1	-	-	2
Tenn. State	25	3	2	4	4	1	-	3	-	12
Pittsburgh	28	4	2	1	11	-	2	1	1	11
Wisconsin	25	1	-	1	4	1	-	-	-	3
ORU										
Iowa State										
Tenn. Tech										
ACU										
Prairie View										
Nebraska										
Tulsa										
Jackson St										
Miss State										
Ole Miss										
Missouri										
Vanderbilt										
Tennessee										
Alabama										
Florida										
Georgia										
S. Carolina										
LSU										
Auburn										
Kentucky										
Georgia										
Ole Miss										
Missouri										
Texas A&M										
SEC Tournament										

**NOTES**

- First career double-double with 11 points and 11 rebounds against Pitt.
- Two games as a senior in double figure scoring.
- SEC Academic Honor Roll | 2016-17, 2017-18.
- Arkansas Athletics Department Academic Champion (4.0 GPA) | Spring 2017.
- Arkansas Athletics Director's List (3.5-3.99 GPA) | Fall 2015, Fall 2016, Fall 2017.
- Arkansas Athletics Department Honor Roll (3.0-3.49 GPA) | Fall 2017, Spring 2018.
- Career-bests for points with 14 against No. 13 Missouri.
- Plans to graduate in December with a degree in Apparel Merchandising.

**CAREER STATISTICS**

Year	GP-GS	Min	Avg	FG	Total		3-Point			F-Throw			Off	Rebounds		PF	FO	Ast	TO	Blk	Stl	Pts	Avg	
					FGA	Pct	FG	FGA	Pct	FT	FTA	Pct		Def	Tot									
2015-16	20-1	174	8.7	6	48	.125	4	33	.121	7	12	.583	12	9	21	1.1	9	0	4	15	2	4	23	1.2
2016-17	30-23	627	20.9	45	144	.313	24	84	.286	20	39	.513	35	80	115	3.8	46	0	28	37	10	19	134	4.5
2017-18	31-31	744	24.0	42	161	.261	18	87	.207	28	46	.609	49	49	98	3.2	55	1	37	35	12	12	130	4.2
2018-19	6-0	137	22.8	12	27	.444	5	18	.278	7	13	.538	14	15	29	4.8	10	0	3	4	6	1	36	6.0
TOTAL	87-55	1682	19.3	105	380	.276	51	222	.230	62	110	.564	110	153	263	3.0	120	1	72	91	30	36	323	3.7

**24 Taylah Thomas | So. | 6-1 | F | Arlington, Texas (Mansfield Timberview HS)**
**SEASON HIGHS**

Points	11	NSU	11-9-18
FG Made	4	NSU	11-9-18
FG Att	7	NSU	11-9-18
3FG Made			
3FG Att			
FT Made	3	NSU	11-9-18
FT Att	6	NSU	11-9-18
Off. Reb.	5	NSU	11-9-18
Def. Reb.	9	Wisconsin	11-25-18
Rebounds	12	Wisconsin	11-25-18
Assists			
Blocks	1	TSU	11-23-18
Steals	3	NSU	11-9-18
Minutes	22	at UTA	11-14-18

**CAREER HIGHS**

Points	13	Samford	11-12-17
FG Made	5	Samford	11-12-17
FG Att	9	at Georgia	1-11-18
3FG Made	1	Ole Miss	12-31-17*
3FG Att	1	at #9 SC	1-25-18*
FT Made	3	NSU	11-9-18*
FT Att	6	NSU	11-9-18*
Off. Reb.	6	Nebraska	11-16-17
Def. Reb.	9	Wisconsin	11-25-18
Rebounds	12	Wisconsin	11-25-18
Assists	2	at #11 Missouri	1-21-18
Blocks	2	Nebraska	11-16-17
Steals	3	NSU	11-9-18
Minutes	29	at Georgia	1-11-18

\*Most Recent

**2018-19 GAME-BY-GAME**

Opponent	M	FG	3P	FT	REB	A	TO	B	S	PT
NSU	17	4	-	3	9	-	-	-	3	11
at UTA	22	1	-	-	9	-	2	-	1	2
Arizona St.	15	-	-	-	2	-	1	-	-	-
Tenn. State	10	-	-	1	3	-	1	1	-	1
Pittsburgh	19	2	-	-	8	-	1	-	-	4
Wisconsin	17	1	-	-	12	-	-	-	1	2
ORU										
Iowa State										
Tenn. Tech										
ACU										
Prairie View										
Nebraska										
Tulsa										
Jackson St										
Miss State										
Ole Miss										
Missouri										
Vanderbilt										
Tennessee										
Alabama										
Florida										
Georgia										
S. Carolina										
LSU										
Auburn										
Kentucky										
Georgia										
Ole Miss										
Missouri										
Texas A&M										
SEC Tournament										

**NOTES**

- Scored 22 points in three games in Italy in August.
- Arkansas Athletics Department Athletic Director's List (3.5-3.99 GPA) | Fall 2017, Spring 2018.
- Considered one of the top power forwards out of Texas.
- Played in every game as a freshman.
- Scored in double figures twice in her career.

**CAREER STATISTICS**

Year	GP-GS	Min	Avg	FG	Total FGA	Pct	3-Point FGA	Pct	F-Throw FTA	Pct	Off	Rebounds Def	Tot	Avg	PF	FO	Ast	TO	Blk	Stl	Pts	Avg		
2017-18	31-2	527	17.0	44	100	.440	3	10	.300	25	42	.595	55	89	144	4.6	58	1	5	25	6	8	116	3.7
2018-19	6-0	100	16.7	8	17	.471	0	0	.000	4	12	.333	13	30	43	7.2	7	0	0	5	1	5	20	3.3
TOTAL	37-2	627	16.9	52	117	.444	3	10	.300	29	54	.537	68	119	187	5.1	65	1	5	30	7	13	136	3.7

## 30 Macy Weaver | So. | 6-3 | F | Davis Junction, Ill. (Stillman Valley HS)



### SEASON HIGHS

Points		
FG Made		
FG Att.		
3FG Made		
3FG Att.		
FT Made		
FT Att.		
Off. Reb.	3	TSU 11-23-18
Def. Reb.	2	TSU 11-23-18
Rebounds	5	TSU 11-23-18
Assists		
Blocks	1	TSU 11-23-18
Steals		
Minutes	10	TSU 11-23-18

### CAREER HIGHS

Points	7	#9/7 SC	1-25-18
FG Made	3	#9/7 SC	1-25-18
FG Att.	4	#9/7 SC	1-25-18
3FG Made	-		
3FG Att.	-		
FT Made	3	#13 Missouri	2-12-18
FT Att.	6	#13 Missouri	2-12-18
Off. Reb.	3	TSU	11-23-18
Def. Reb.	4	UTA	12-17-17
Rebounds	5	TSU	11-23-18*
Assists	1	UTEP	11-24-17
Blocks	4	UTEP	11-24-17
Steals	2	#15 Texas A&M	3-1-18
Minutes	19	UTEP	11-24-17

\*Most Recent

### 2018-19 GAME-BY-GAME

Opponent	M	FG	3P	FT	REB	A	TO	B	S	PT
NSU	4	-	-	-	-	-	-	-	-	-
at UTA	DNP									
Arizona St.	DNP									
Tenn. State	10	-	-	-	5	-	-	1	-	-
Pittsburgh	DNP									
Wisconsin	DNP									
ORU										
Iowa State										
Tenn. Tech										
ACU										
Prairie View										
Nebraska										
Tulsa										
Jackson St										
Miss State										
Ole Miss										
Missouri										
Vanderbilt										
Tennessee										
Alabama										
Florida										
Georgia										
S Carolina										
LSU										
Auburn										
Kentucky										
Georgia										
Ole Miss										
Missouri										
Texas A&M										
SEC Tournament										

### NOTES

- Played in 20 games as a freshman.
- Arkansas Athletics Department Athletic Director's List (3.5-3.99 GPA) | Fall 2017, Spring 2018.
- Played 19 minutes with four blocks and solid defense at UTEP.
- Career High seven points in 11 minutes vs South Carolina.

### CAREER STATISTICS

Year	GP-GS	Min	Avg	FG	Total FGA	Pct	3-Point FGA	Pct	F-Throw FTA	Pct	Off	Def	Tot	Avg	PF	FO	Ast	TO	Blk	Stl	Pts	Avg		
2017-18	20-0	144	7.2	8	20	.400	0	0	.000	11	24	.458	16	18	34	1.7	28	0	1	5	10	3	27	1.4
2018-19	2-0	14	7.0	0	0	.000	0	0	.000	0	0	.000	3	2	5	2.5	3	0	0	0	1	0	0	0.0
TOTAL	22-0	158	7.2	8	20	.400	0	0	.000	11	24	.458	19	20	39	1.8	31	0	1	5	11	3	27	1.2

## 33 Chelsea Dungee | R-So. | 5-11 | G | Sapulpa, Okla. (Sapulpa HS) | University of Oklahoma



### SEASON HIGHS

Points	20	Wisconsin 11-25-18*
FG Made	7	#22 ASU 11-18-18
FG Att.	13	Pitt 11-24-18
3FG Made	3	Wisconsin 11-25-18
3FG Att.	6	Pitt 11-24-18*
FT Made	7	Wisconsin 11-25-18
FT Att.	10	Wisconsin 11-25-18
Off. Reb.	1	Wisconsin 11-25-18*
Def. Reb.	5	TSU 11-23-18*
Rebounds	6	#22 ASU 11-18-18
Assists	3	NSU 11-9-18
Blocks	2	Pitt 11-24-18
Steals	2	TSU 11-23-18
Minutes	34	Wisconsin 11-25-18*

### CAREER HIGHS

Points	20	Wisconsin 11-25-18*
FG Made	7	#22 ASU 11-18-18*
FG Att.	16	at Texas Tech 2-11-17#
3FG Made	3	Wisconsin 11-25-18*
3FG Att.	7	at Texas Tech 2-11-17#
FT Made	10	at Texas 1-17-17#
FT Att.	10	at Texas 1-17-17#
Off. Reb.	3	at Texas 1-17-17#
Def. Reb.	7	Texas 2-18-17*#
Rebounds	9	at Texas Tech 2-11-17#
Assists	5	at Texas 1-17-17#
Blocks	2	Pitt 11-24-18*
Steals	3	at Texas Tech 2-11-17#
Minutes	39	vs. W Virginia 2-7-17#

\*Most Recent | #at OU

### 2018-19 GAME-BY-GAME

Opponent	M	FG	3P	FT	REB	A	TO	B	S	PT
NSU	22	4	2	1	3	3	1	-	-	22
at UTA	26	6	2	2	3	1	4	1	-	16
Arizona St.	24	7	2	4	6	1	1	-	-	20
Tenn. State	30	5	-	6	6	-	2	-	2	16
Pittsburgh	34	2	1	5	1	-	1	2	1	10
Wisconsin	34	5	3	7	5	1	4	-	3	20
ORU										
Iowa State										
Tenn. Tech										
ACU										
Prairie View										
Nebraska										
Tulsa										
Jackson St										
Miss State										
Ole Miss										
Missouri										
Vanderbilt										
Tennessee										
Alabama										
Florida										
Georgia										
S Carolina										
LSU										
Auburn										
Kentucky										
Georgia										
Ole Miss										
Missouri										
Texas A&M										
SEC Tournament										

### NOTES

- Double figure scoring in every game this year.
- Twenty points twice as a sophomore (Arizona State, Wisconsin).
- Redshirted the 2017-18 season at Arkansas.
- Arkansas Athletics Department Honor Roll (3.0-3.49 GPA) | Fall 2017.
- Won a gold medal with USA Basketball.
- All Big 12 freshman team in 2017.
- Oklahoma Gatorade Player of the Year in 2014 ... Won a gold medal with USA basketball ...At Oklahoma- Big 12 freshman of the year.

### CAREER STATISTICS

Year	GP-GS	Min	Avg	FG	Total FGA	Pct	3-Point FGA	Pct	F-Throw FTA	Pct	Off	Def	Tot	Avg	PF	FO	Ast	TO	Blk	Stl	Pts	Avg		
2016-17*	33-18	695	21.1	81	214	.379	22	65	.338	60	74	.811	18	66	84	2.5	62	0	26	51	5	19	244	7.4
2017-18	Redshirt																							
2018-19**	6-6	170	28.3	29	63	.460	10	22	.455	25	34	.735	5	19	24	4.0	17	1	6	13	3	6	93	15.5
TOTAL**	6-6	170	28.3	29	63	.460	10	22	.455	25	34	.735	5	19	24	4.0	17	1	6	13	3	6	93	15.5

\*at Oklahoma | \*\*at Arkansas only



**52 Rokia Doumbia | Fr. | 5-9 | G | Mali, Africa | Bradenton, Fla. (IMG Academy)**
**SEASON HIGHS**

Points	11	NSU	11-9-18
FG Made	4	NSU	11-9-18
FG Att.	6	NSU	11-9-18
3FG Made	1	NSU	11-9-18
3FG Att.	2	NSU	11-9-18
FT Made	2	NSU	11-9-18
FT Att.	3	NSU	11-9-18
Off. Reb.			
Def. Reb.	1	Wisconsin	11-25-18*
Rebounds	1	Wisconsin	11-25-18*
Assists	1	TSU	11-23-18
Blocks			
Steals	1	at UTA	11-14-18*
Minutes	17	NSU	11-9-18

**CAREER HIGHS**

Points	11	NSU	11-9-18
FG Made	4	NSU	11-9-18
FG Att.	6	NSU	11-9-18
3FG Made	1	NSU	11-9-18
3FG Att.	2	NSU	11-9-18
FT Made	2	NSU	11-9-18
FT Att.	3	NSU	11-9-18
Off. Reb.			
Def. Reb.	1	Wisconsin	11-25-18*
Rebounds	1	Wisconsin	11-25-18*
Assists	1	TSU	11-23-18
Blocks			
Steals	1	at UTA	11-14-18*
Minutes	17	NSU	11-9-18

\*Most Recent

**2018-19 GAME-BY-GAME**

Opponent	M	FG	3P	FT	REB	A	TO	B	S	PT
NSU	17	4	1	2	1	-	-	-	1	11
at UTA	4	-	-	-	-	-	1	-	1	-
Arizona St.	7	-	-	-	1	-	1	-	-	-
Tenn. State	6	-	-	-	-	1	-	-	-	-
Pittsburgh	DNP									
Wisconsin	4	-	-	-	1	-	1	-	-	-
ORU										
Iowa State										
Tenn. Tech										
ACU										
Prairie View										
Nebraska										
Tulsa										
Jackson St										
Miss State										
Ole Miss										
Missouri										
Vanderbilt										
Tennessee										
Alabama										
Florida										
Georgia										
S Carolina										
LSU										
Auburn										
Kentucky										
Georgia										
Ole Miss										
Missouri										
Texas A&M										
SEC Tournament										

**NOTES**

- Speaks three languages: French, English, Bambara.
- Left-handed.
- Originally from Mali, Africa, and attended high school at IMG Academy in Bradenton, Florida
- Four-star recruit and was a member of the U16 Mali (Africa) National Team in 2016 and 2017.
- Was the MVP of the FIBA U16 Africa Championship in 2015.

**CAREER STATISTICS**

Year	GP-GS	Min	Avg	FG	Total FGA	Pct	3-Point FG	3-Point FGA	3-Point Pct	FT	F-Throw FTA	Pct	Off	Rebounds Def	Tot	Avg	PF	FO	Ast	TO	Blk	Stl	Pts	Avg
2018-19	5-0	38	7.6	4	7	.571	1	2	.500	2	3	.667	0	3	3	0.6	5	0	1	3	0	2	11	2.2
<b>TOTAL</b>	<b>5-0</b>	<b>38</b>	<b>7.6</b>	<b>4</b>	<b>7</b>	<b>.571</b>	<b>1</b>	<b>2</b>	<b>.500</b>	<b>2</b>	<b>3</b>	<b>.667</b>	<b>0</b>	<b>3</b>	<b>3</b>	<b>0.6</b>	<b>5</b>	<b>0</b>	<b>1</b>	<b>3</b>	<b>0</b>	<b>2</b>	<b>11</b>	<b>2.2</b>

**ARKANSAS SUPPORT STAFF**

**Amber Shirey**  
Director of Operations



**C'eira Ricketts**  
Director of Student-Athlete Development



**Jeff Brazil**  
Director of Video and Scouting



**Natalie Trotter**  
Athletic Trainer



**Todd Barbour**  
Strength and Conditioning Coach



**Marissa Byler**  
Administrative Assistant



**Jalen Powell**  
Graduate Assistant



**Heather Corral**  
Graduate Assistant



**Delaney Osborn**  
Manager

# 2018-19 @RAZORBACKWBB



**A'Tyanna Gaulden**  
So | 5-7 | G  
Ocilla, Georgia



**Raven Northcross-Baker**  
Sr | 5-9 | G  
Malvern, Arkansas



**Alexis Tolefree**  
Jr | 5-8 | G  
Conway, Arkansas



**Malica Monk**  
Sr | 5-5 | G  
North Little Rock, Arkansas



**Kiara Williams**  
Jr | 6-1 | C  
Little Rock, Arkansas



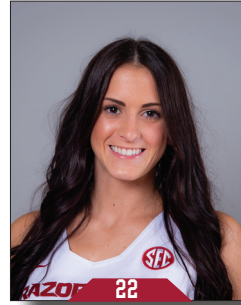
**Grayce Spangler**  
So | 5-11 | G  
Fayetteville, Arkansas



**Jailyn Mason**  
Jr | 5-9 | G  
Mason, Ohio



**Sydney Stout**  
Jr | 6-0 | F  
Bixby, Oklahoma



**Bailey Zimmerman**  
Sr | 6-0 | F  
St. Vincent, Arkansas



**Amber Ramirez**  
Jr | 5-9 | G  
San Antonio, Texas



**Taylah Thomas**  
So | 6-1 | C  
Arlington, Texas



**Macy Weaver**  
So | 6-3 | C  
Davis Junction, Illinois



**Chelsea Dungee**  
So | 5-11 | G  
Sapulpa, Oklahoma



**Rokia Doumbia**  
Fr | 5-7 | G  
Bradenton, Florida/Mali, Africa



**Mike Neighbors**  
Head Coach  
Second Season



**Todd Schaefer**  
Assistant Coach  
Second Season



**Lacey Goldwire**  
Assistant Coach  
Second Season



**Pauline Love**  
Assistant Coach  
Second Season



Official Basketball Box Score -- Game Totals -- Final Statistics  
**Northwestern State vs AR**  
11/09/18 10:30am at Fayetteville, AR Bud Walton Arena**Northwestern State 53 • 0-1**

#	Player		Total			3-Ptr			Rebounds			PF	TP	A				Min
			FG-FGA	FG-FGA	FT-FTA	FG-FGA	FG-FGA	FT-FTA	Off	Def	Tot			T	O	Blk	Stl	
15	JOHNSON, JASMYN	f	2-6	2-6	0-0	3	2	5	4	6	3	1	0	5	25			
22	GILLIAM, LIBBA	f	6-14	1-5	0-0	1	3	4	0	13	3	3	0	0	27			
23	SCOTT, JOCELYN	f	0-6	0-0	1-2	7	5	12	2	1	0	3	0	2	20			
00	GRANT, NAUTICA	g	5-8	3-5	1-2	0	2	2	3	14	2	2	0	0	33			
03	THOMAS, SAMI	g	2-7	1-2	2-2	0	2	2	3	7	3	1	1	1	22			
03	FREEMAN, JADA	g	1-6	0-2	0-0	0	2	2	2	2	2	5	1	1	24			
04	SAVAGE, LACEE	g	0-2	0-0	2-2	1	0	1	0	2	0	2	0	0	6			
13	MILLER, VICTORIA	g	0-1	0-0	0-0	0	0	0	0	2	0	1	0	0	7			
20	BARNES, LEAH	g	1-1	0-0	0-0	0	0	0	0	3	2	0	2	0	9			
24	BONNER, KIRA	g	2-4	1-1	0-0	1	1	2	4	5	0	2	0	1	10			
32	NERO, RAVON	g	0-2	0-0	1-4	0	0	0	4	1	0	8	0	0	17			
Team						1	3	4										
Totals				19-57	8-21	7-12	14	20	34	27	53	14	30	1	10	200		
1st - FG %:			6-14	42.9%	2nd:	3-10	30.0%	3rd:	3-16	18.8%	4th:	7-17	41.2%	Game:	19-57	33.3%	Deadball	
3FG %:			2-4	50.0%		2-5	40.0%		1-5	20.0%		3-7	42.9%		8-21	38.1%	Rebounds	
FT %:			0-0	0.0%		5-6	83.3%		2-4	50.0%		0-2	0.0%		7-12	58.3%	2	

**AR 98 • 1-0**

#	Player		Total		3-Ptr		Rebounds			PF	TP	A				Min
			FG-FGA	FG-FGA	FT-FTA	Off	Def	Tot	A			T	O	Blk	Stl	
10	WILLIAMS, Kiara	c	0-7	0-0	0-0	5	4	9	1	10	1	2	1	1	19	
01	NORTHCROSS-BAKER,	g	5-0	0-0	0-0	1	0	1	2	0	2	1	0	1	16	
02	TOLEFREE, Alexis	g	5-11	5-10	4-6	0	3	3	0	19	0	3	0	2	21	
03	MONK, Malica	g	4-5	2-3	2-4	0	0	0	2	12	4	3	0	1	22	
33	DUNGEE, Chelsea	g	4-8	2-3	1-3	1	2	3	2	11	3	1	0	0	22	
00	GAULDEN, A'Tyanna	g	6-7	0-0	4-7	0	2	2	0	16	3	4	0	2	17	
13	SPANGLER, Grayce	g	0-1	0-1	0-0	0	0	0	2	0	0	0	0	0	5	
14	MASON, Jailyn	g	1-3	0-1	2-2	0	4	4	2	4	2	1	0	0	19	
20	STOUT, Sydney	g	0-0	0-0	0-0	0	0	0	1	0	0	0	0	0	4	
22	ZIMMERMAN, Bailey	g	1-4	1-3	1-2	0	4	4	0	4	1	0	1	0	17	
24	THOMAS, Taylah	g	4-7	0-0	3-6	5	4	9	0	11	0	0	0	3	17	
30	WEAVER, Macy	g	0-0	0-0	0-0	0	0	0	1	0	0	0	0	0	4	
52	DOUMBIA, Rokia	g	4-6	1-2	2-3	0	1	1	2	11	0	0	0	1	17	
	Team					0	2	2								
Totals			34-59	11-23	19-33	12	26	38	15	98	18	16	3	11	200	
1st - FG %: 11-19 57.9%      2nd: 9-13 69.2%      3rd: 6-13 46.2%      4th: 8-14 57.1%      Game: 34-59 57.6%      Deadball																
3FG %: 3-6 50.0%      4-6 66.7%      1-5 20.0%      3-6 50.0%      11-23 47.8%      Rebounds																
FT %: 3-6 50.0%      6-12 50.0%      7-9 77.8%      3-6 50.0%      19-33 57.6%      7,1																

Officials: Scott Yarbrough, Jennifer Rezac, Meadow Overstreet  
Technical fouls: Northwestern State-None. AR-None.  
Attendance: 5497  
Elementary Day  
Scanned Tickets: 4,889

Score by periods	1st	2nd	3rd	4th	Total
Northwestern State	14	13	9	17	53
AR	28	28	20	22	98

Official Basketball Box Score -- Game Totals -- Final Statistics  
**No. 22 Arizona State vs AR**  
11/18/18 7 p.m. at Fayetteville, Ark. (Bud Walton Arena)**No. 22 Arizona State 88 • 2-1**

#	Player		Total		3-Ptr		Rebounds			PF	TP	A				Min	
			FG-FGA	FG-FGA	FT-FTA	Off	Def	Tot	A			T	Blk	Stl			
42	IBIS, KIANNA	f	9-14	0-1	2-2	2	3	5	2	20	1	4	1	1	27		
33	JOHNSON-CHAPMAN, C	c	3-5	0-0	0-0	3	4	7	4	6	1	0	0	1	16		
01	RICHARDSON, REILI	g	1-4	0-2	5-8	0	3	3	1	7	5	1	0	2	28		
11	RYAN, ROBBIE	g	3-6	2-2	5-6	2	1	3	2	13	1	2	0	0	20		
22	EKMARK, COURTNEY	g	0-5	0-4	0-0	1	2	3	3	0	2	1	0	0	24		
00	HANSON, TAYA	g	2-7	1-3	0-0	1	2	3	0	5	1	0	0	0	17		
04	RUSSELL, KIANA	g	0-1	0-0	1-2	0	0	0	2	1	1	0	0	0	2		
05	LOERA, JAMIE	g	2-4	2-3	2-2	1	1	2	0	8	0	1	0	0	14		
21	ELENGA, SOPHIA	g	5-7	0-0	1-2	4	8	12	2	11	0	4	1	1	25		
23	MBULITO, IRIS	g	4-6	0-1	5-11	1	2	3	4	13	4	3	0	1	16		
32	VAN HYFTE, JAYDE	g	1-2	0-0	0-0	0	0	0	1	2	0	0	0	0	8		
52	RUDEN, JAMIE	g	1-2	0-0	0-0	0	0	0	0	2	0	0	0	0	3		
	Team					0	2	2									
	Totals		31-63	5-16	21-33	15	28	43	21	88	16	17	2	6	200		
1st - FG %:			11-19	57.9%	2nd:	5-19	26.3%	3rd:	11-16	68.8%	4th:	4-9	44.4%	Game:	31-63	49.2%	Deadball
3FG %:			2-5	40.0%		2-5	40.0%		0-1	0.0%		1-5	20.0%		5-16	31.3%	Rebounds
FT %:			5-9	55.6%		5-6	83.3%		1-2	50.0%		10-16	62.5%		21-33	63.6%	3,1

**AR 85 • 2-1**

#	Player		Total		3-Ptr		Rebounds			PF	TP	A				Min
			FG-FGA	FG-FGA	FT-FTA	Off	Def	Total	To			Bk	Stl			
10	WILLIAMS, Kiara	c	4-6	0-0	0-0	4	5	9	1	8	2	1	0	3	25	
02	TOLEFREE, Alexis	g	8-20	3-9	3-4	0	3	3	4	22	2	4	0	1	33	
03	MONK, Malica	g	5-14	0-1	3-8	0	4	4	4	13	1	1	0	0	27	
04	MASON, Jailyn	g	5-6	1-1	0-0	1	3	4	4	11	3	0	0	1	31	
33	DUNGEE, Chelsea	g	7-13	2-6	4-4	1	5	6	4	20	1	1	0	0	24	
00	GAULDEN, A'Tyanna	g	2-5	0-0	5-6	0	0	0	0	9	0	1	0	1	13	
01	NORTHCROSS-BAKER,	g	0-1	0-1	0-0	0	0	0	0	2	0	0	1	0	4	
22	ZIMMERMAN, Bailey	g	1-2	0-1	0-0	0	0	1	1	2	0	1	0	0	21	
24	THOMAS, Taylah	g	0-0	0-0	0-0	0	2	2	0	0	0	1	0	0	15	
52	DOUMBIA, Rokia	g	0-0	0-0	0-0	0	1	1	2	0	0	1	0	0	7	
	Team					4	1	5								
	Totals		32-67	6-19	15-22	10	25	35	22	85	9	13	0	6	200	
1st - FG %: 8-16 28.6% 2nd: 7-16 43.8% 3rd: 8-16 50.0% 4th: 9-19 47.4% Game: 32-67 47.8% Deadball 3-1																
3FG %: 2-7 28.6% 0-1 0.0% 2-6 33.3% 3-5 60.0% 15-22 68.2%																
FT %: 7-9 77.8% 3-4 75.0% 2-3 66.7% 3-6 50.0%																

Officials: Mark Zentz, Maj Forsberg, Roy Gulbeyan  
Technical fouls: No. 22 Arizona State-None. AR-None.  
Attendance: 1519  
Total Scanned Tickets: 1,189

Score by periods	1st	2nd	3rd	4th	Total
No. 22 Arizona State	29	17	23	19	88
AR	25	17	20	23	85

Official Basketball Box Score -- Game Totals -- Final Statistics  
**AR vs UT Arlington**  
11/14/18 7:00 pm at**AR 66 • 2-0**

#	Player		Total			Rebounds			PF	TP	A TO Blk Stl				Min		
			FG-FGA	FG-FGA	FT-FTA	Off	Def	Tot			A	T	Blk	Stl			
10	WILLIAMS, Kiara	f	2-4	0-0	0-1	2	4	6	3	4	0	2	1	0	18		
02	TOLEFREE, Alexis	g	6-19	3-9	3-3	1	3	4	0	18	0	1	1	3	36		
03	MONK, Malica	g	7-15	0-2	4-8	3	5	8	4	18	3	4	0	2	29		
14	MASON, Jailyn	g	0-2	0-0	0-0	0	1	1	2	0	2	1	0	3	23		
33	DUNGEE, Chelsea	g	6-9	2-2	2-2	1	2	3	5	16	1	4	1	0	26		
00	GAULDEN, A'Tyanna		1-3	0-0	0-0	0	3	3	1	2	1	3	0	0	11		
01	NORTHCROSS-BAKER,		1-5	0-2	0-0	0	3	3	1	2	1	0	0	0	10		
22	ZIMMERMAN, Bailey		2-3	0-1	0-2	3	2	5	2	4	0	1	1	0	21		
24	THOMAS, Taylah		1-2	0-0	0-2	2	7	9	1	2	0	2	0	1	22		
52	DOUMBIA, Rokia		0-1	0-0	0-0	0	0	0	1	0	0	1	0	1	4		
	Team					0	0	0									
Totals			26-63	5-16	9-18	12	30	42	20	66	8	19	4	10	200		
1st FG %:			7-13	53.8%	2nd:	7-14	50.0%	3rd:	6-19	31.6%	4th:	6-17	35.3%	Game:	26-63	41.3%	Deadball
3FG %:			1-3	33.3%	2-5	4-10	40.0%	1-4	25.0%					5-16	31.3%		Rebounds
FT %:			0-0	0.0%	5-8	62.5%	1-4	50.0%	0-2					9-18	50.0%		6,6
UT Arlington 65 - 1-1																	

Official Basketball Box Score -- Game Totals -- Final Statistics  
**Pittsburgh vs Arkansas**  
 11/24/18 7:30 p.m. at Municipal Auditorium, Nashville, Tenn.

**Pittsburgh 61 • 3-4**

#	Player	Total		3-Ptr		Rebounds			PF	TP	A TO Blk Stl				Min
		FG-FGA	FG-FGA	FT-FTA	FT-FTA	Off	Def	Tot			A	TO	Blk	Stl	
01	Danielle Garven	f	4-9	0-0	4-4	1	3	4	3	12	4	6	0	0	30
11	Cara Judkins	c	4-5	0-0	0-2	2	5	7	1	8	1	2	1	0	20
03	Jasmine Whitney	g	3-6	0-2	0-0	0	7	7	4	6	5	4	1	1	36
04	Cassidy Walsh	g	1-6	0-1	4-4	1	3	4	2	6	1	2	1	0	32
13	Kyla Nelson	g	1-6	1-3	0-2	0	2	2	2	3	1	1	0	0	29
00	Jahsnyi Knight		3-6	0-0	0-0	0	2	2	0	6	1	0	0	2	13
10	Ismi Prapa		0-0	0-0	0-0	0	0	0	0	0	0	2	0	0	1
14	Kauai Bradley		2-5	1-3	0-0	1	3	4	4	5	1	4	0	0	16
22	Jaala Henry		0-0	0-0	0-0	0	1	1	1	0	0	1	0	0	1
32	Kalista Walters		7-9	0-0	1-2	3	4	7	1	15	3	0	1	1	22
	Team					2	8	10							
	Totals		25-52	2-9	9-14	10	38	48	18	61	17	22	4	4	200
1st - FG %: 7-16 43.8% 2nd: 4-12 33.3% 3rd: 9-14 64.3% 4th: 5-10 50.0% Game: 25-52 48.1% Deadball Rebounds 3															
3FG %: 1-2 50.0% 0-3 0.0% 1-3 33.3% 2-9 22.2% 9-14 64.3%															
FT %: 2-2 100.0% 0-0 0.0% 2-2 100.0% 5-10 50.0%															

**Arkansas 54 • 3-2**

#	Player	Total		3-Ptr		Rebounds			PF	TP	A TO Blk Stl				Min
		FG-FGA	FG-FGA	FT-FTA	FT-FTA	Off	Def	Tot			A	TO	Blk	Stl	
10	WILLIAMS, Kiara	f	2-4	0-0	1-3	2	2	4	1	5	0	0	0	0	21
02	TOLEFREE, Alexis	g	4-23	3-16	1-2	2	4	6	3	12	5	2	0	4	32
03	MONK, Malica	g	2-12	0-4	1-2	2	1	3	3	5	2	1	0	2	31
14	MASON, Jailyn	g	2-5	1-3	0-0	0	1	1	1	5	1	1	0	1	21
33	DUNGEE, Chelsea	g	2-13	1-6	5-6	0	1	1	1	10	0	1	2	1	34
00	GAULDEN, A'Tyanna		1-6	0-1	0-0	1	1	2	0	2	3	0	0	1	11
01	NORTHCROSS-BAKER,		0-0	0-0	0-0	0	0	0	1	0	0	0	0	0	3
22	ZIMMERMAN, Bailey		4-8	2-5	1-2	7	4	11	2	11	0	2	1	1	28
24	THOMAS,Taylah		2-3	0-0	0-2	3	5	8	2	4	0	1	0	0	19
	Team					4	0	4							
	Totals		19-74	7-35	9-17	21	19	40	14	54	11	8	3	10	200
1st - FG %: 4-18 22.2% 2nd: 4-16 25.0% 3rd: 6-17 35.3% 4th: 5-23 21.7% Game: 19-74 25.7% Deadball Rebounds 4															
3FG %: 2-8 25.0% 0-5 0.0% 3-9 33.3% 2-13 15.4% 7-35 20.0%															
FT %: 0-0 0.0% 0-3 0.0% 5-6 83.3% 4-8 50.0%															

Officials: Troy Winders, Meadow Overstreet, Erika Herriman-Camarota  
 Technical fouls: Pittsburgh-None. Arkansas-None.  
 Attendance:

Score by periods	1st	2nd	3rd	4th	Total
Pittsburgh	17	8	21	15	61
Arkansas	10	8	20	16	54

Last FG - UP 4th-01:42, AR 4th-00:21.  
 Largest lead - UP by 15 3rd-07:06, AR by 2 1st-09:40,  
 UP led for 36:21, AR led for 00:20. Game was tied for 03:00.

Points	In Paint	T/O	2nd Chance	Fast Break	Bench
Pittsburgh	42	4	10	2	26
Arkansas	22	19	10	10	17

Score tied - 2 times.  
 Lead changed - 1 time.



Official Basketball Box Score -- Game Totals -- Final Statistics  
**AR vs Wisconsin**  
 11/25/18 7:30 p.m. at Nashville, TN (Municipal Auditorium)



**AR 69 • 4-2**

#	Player	Total		3-Ptr		Rebounds			PF	TP	A TO Blk Stl				Min
		FG-FGA	FG-FGA	FT-FTA	FT-FTA	Off	Def	Tot			A	TO	Blk	Stl	
10	WILLIAMS, Kiara	f	5-10	0-0	3-5	6	2	8	4	13	0	1	0	3	23
02	TOLEFREE, Alexis	g	2-9	1-6	0-0	2	0	2	0	5	1	1	0	0	17
03	MONK, Malica	g	5-11	0-0	3-8	0	1	1	1	13	3	0	0	1	27
14	MASON, Jailyn	g	5-14	1-4	1-2	3	4	7	3	12	1	1	0	2	36
33	DUNGEE, Chelsea	g	5-11	3-5	7-10	1	4	5	3	20	1	4	0	3	34
00	GAULDEN, A'Tyanna		0-3	0-0	1-2	0	0	0	1	1	4	1	0	1	17
22	ZIMMERMAN, Bailey		1-5	0-4	1-1	2	2	4	2	3	1	0	0	0	25
24	THOMAS,Taylah		1-2	0-0	0-0	3	9	12	3	2	0	0	0	1	17
52	DOUMBIA, Rokia		0-0	0-0	0-0	0	1	1	0	0	0	1	0	0	4
	Team					1	3	4							
	Totals		24-65	5-19	16-28	18	26	44	17	69	11	10	0	11	200
1st - FG %: 8-19 42.1% 2nd: 5-12 41.7% 3rd: 5-20 25.0% 4th: 6-14 42.9% Game: 24-65 36.9% Deadball Rebounds 6															
3FG %: 2-6 33.3% 0-2 0.0% 2-8 25.0% 1-3 33.3% 5-19 26.3%															
FT %: 2-4 50.0% 1-3 33.3% 3-4 75.0% 10-17 58.8%															

**Wisconsin 68 • 6-1**

#	Player	Total		3-Ptr		Rebounds			PF	TP	A TO Blk Stl				Min
		FG-FGA	FG-FGA	FT-FTA	FT-FTA	Off	Def	Tot			A	TO	Blk	Stl	
11	Howard,Marsha	f	3-4	0-0	4-8	3	5	8	4	10	0	2	2	1	27
34	Lewis,Imani	f	5-8	0-0	3-5	4	8	12	3	13	2	1	0	0	31
02	Karlis,Kelly	g	0-3	0-3	0-0	1	0	1	2	0	1	1	1	0	15
10	Van Leeuwen,Kendra	g	5-14	2-6	0-0	2	6	8	3	12	12	5	0	0	33
44	Luehring,Alex	g	3-10	3-10	0-0	0	3	3	1	9	4	2	1	0	34
03	Gilreath,Suzanne		2-6	2-6	0-0	0	1	1	2	6	0	0	0	0	5
14	Laszewski,Abby		4-6	0-0	0-0	2	1	3	2	8	0	2	1	0	21
20	Bragg,Diamond		1-2	0-0	0-0	0	1	1	1	2	1	2	0	0	8
23	Hale,Jasmine		4-10	0-3	0-0	1	2	3	4	8	1	1	1	0	26
	Team					1	2	3							
	Totals		27-63	7-28	7-13	14	29	43	22	68	21	16	6	1	200
1st - FG %: 7-18 38.9% 2nd: 6-15 40.0% 3rd: 8-17 47.1% 4th: 6-13 46.2% Game: 27-63 42.9% Deadball Rebounds 2															
3FG %: 1-9 11.1% 3-8 37.5% 1-4 25.0% 2-7 28.6% 7-28 25.0%															
FT %: 2-4 50.0% 1-4 25.0% 2-2 100.0% 2-3 66.7%															

Officials: Felicia Grinter, Troy Winders, Neonta Williams  
 Technical fouls: AR-None. Wisconsin-None.  
 Attendance:

Score by periods	1st	2nd	3rd	4th	Total
AR	20	11	15	23	69
Wisconsin	17	16	19	16	68

Points	In Paint	T/O	2nd Chance	Fast Break	Bench
AR	28	15	11	6	6
WIS	34	11	9	0	24

Last FG - AR 4th-00:11, WIS 4th-01:04.  
 Largest lead - AR by 7 1st-04:45, WIS by 15 3rd-04:12.  
 AR led for 10:54, WIS led for 25:21. Game was tied for 03:06.

Score tied - 4 times.  
 Lead changed - 6 times.