

W || WOMEN'S BASKETBALL

10 First-Team All-Big Ten Selections • 24 1,000-Point Scorers • 14 Post-season Tournament Appearances • 5 WNBA Players • 7 UW Hall of Fame members

WISCONSIN (4-0) AT CHALLENGE IN THE MUSIC CITY

FRIDAY-SUNDAY, NOV. 23-25 ■ NASHVILLE, TENN. ■ NASHVILLE MUNICIPAL AUDITORIUM



WISCONSIN BADGERS
Head Coach: Jonathan Tsipis
Record at WIS: 22-43 (3rd)
Overall: 114-81 (7th)



PITTSBURGH PANTHERS
Head Coach: Lance White
Record at Pitt: 2-3 (1st)
Overall: 352-148 (16th)



TENNESSEE STATE TIGERS
Head Coach: Jessica Kern
Record at WIS: 6-24 (2nd)
Overall: 67-109 (7th)



ARKANSAS RAZORBACKS
Head Coach: Mike Neighbors
Record at Pitt: 13-18 (2nd)
Overall: 111-59 (6th)

BADGERS TRAVEL TO MUSIC CITY FOR TOURNAMENT

■ Wisconsin (4-0) travels to Nashville this Thanksgiving weekend, competing in Challenge in the Music City. UW takes on Pittsburgh (2-3), Tennessee State (0-3) and Arkansas (2-1) in the round-robin tournament on Friday-Sunday.

FROM THE COURT

- The Badgers opened a season 4-0 for the first time since 2006-07 after edging IUPUI, 65-64 in overtime, on Monday. Senior **Marsha Howard** scored the game-winning lay up with three seconds left in overtime.
- The Badgers have had balanced scoring this season with three-or-more players tallying 10-or-more points in all four games. Senior **Marsha Howard** and freshman **Imani Lewis** have both scored in double figures all four games this season, averaging 15.0 and 13.3 points, respectively, per game on the season.
- Wisconsin has outrebounded all four opponents this season, ranking fifth in the Big Ten with a +16.7 rebounds per game average. The Badgers rank third in the conference with 50 boards per game while giving up just 33.3 rebounds per game.
- Freshman **Imani Lewis** picked up her second double-double of the season against IUPUI on Monday. The 6-foot-1 forward led the Badgers with 11 rebounds while adding 12 points.
- The Badgers are improving their ball control, tallying 13-or-fewer turnovers their last three games. Wisconsin ties for third in the Big Ten with 14.8 turnovers per game this season, which would rank fourth on the UW single-season record list.
- Senior **Marsha Howard** has scored in double figures in 11 straight games, dating back to the 2017-18 season. The 6-foot forward is averaging 16.4 points per game over the stretch while shoot 54.1 percent from the field.
- Wisconsin has two of the top freshmen in the Big Ten in scoring and rebounding. **Imani Lewis** ranks second in scoring (13.7) and second in rebounding (8.7). **Alex Luehring** is eighth in scoring (9.3) and 10th in rebounding (4.3). The redshirt freshman also leads all conference newcomers in 3-point percentage (.400) and 3-pointers made (2.7).
- The Badgers are scoring well in the paint, averaging 36.7 points per game while opponents are averaging just 17.7 points per game. UW is also scoring 14 points per game on second-chance baskets while foes average just 2.7 points per game on second chances.
- UW has also played tough defense, allowing opponents to shoot just 31.4 percent from the field, which ranks fifth in the Big Ten.



Senior **Marsha Howard** scored the game-winning basket vs. IUPUI with three seconds left in overtime on Monday.

2018-19 SCHEDULE

Record: 4-0 (Home: 3-0; Away: 1-0; Neutral: 0-0)
Big Ten Record: 0-0

Date	Event	Time
NOV. 8	WINTHROP	W, 76-41
Nov. 13	at Milwaukee	W, 68-57
NOV. 17	NORTH DAKOTA STATE	W, 64-53
NOV. 19	IUPUI	W, 65-64 ^{OT}

at Challenge in the Music City, Nashville, Tenn.		
Nov. 23	vs. Pittsburgh	5 p.m.
Nov. 24	vs. Tennessee State	5 p.m.
Nov. 25	vs. Arkansas	7:30 p.m.

B1G/ACC Challenge		
NOV. 28	DUKE	8 p.m.

DEC. 4	MARSHALL	7 p.m.
Dec. 8	at Green Bay	1 p.m.
DEC. 12	CHICAGO STATE	7 p.m.
DEC. 21	EVANSVILLE	7 p.m.

Dec. 28	at #23 Minnesota	8 p.m.
DEC. 31	PURDUE	2 p.m.

Jan. 3	at Penn State	6 p.m.
Jan. 7	at #12 Iowa	7 p.m.
JAN. 13	INDIANA	2 p.m.
JAN. 17	#23 MINNESOTA	7 p.m.
Jan. 20	at Northwestern	3:30 p.m.
JAN. 24	PENN STATE	7 p.m.
JAN. 27	NEBRASKA	2 p.m.
Jan. 31	at #7 Maryland	6 p.m.

FEB. 3	MICHIGAN	2 p.m.
Feb. 10	at Illinois	2 p.m.
FEB. 14	MICHIGAN STATE	7 p.m.
Feb. 17	at Ohio State	1 p.m.
FEB. 20	ILLINOIS	7 p.m.
Feb. 25	at Rutgers	5:30 p.m.
FEB. 28	OHIO STATE	7:30 p.m.
March 3	at Michigan	TBA

March 6-10 at Big Ten Conference Tournament
Bankers Life Fieldhouse, Indianapolis

Mar. 22-25 at NCAA First & Second Rounds

Mar. 29-Apr 1 at NCAA Regional

April 5 & 7 at NCAA Final Four,
Tampa Bay, Fla.

WISCONSIN'S PROBABLE STARTERS (BASED ON LAST TIME OUT)

No.	Name	Pos.	Yr.	Pts.	Reb.	Ast.	Notes
2	Kelly Karlis	G	RS Sr.	8.3	5.0	2.3	Doubles figure points in two games
10	Kendra Van Leeuwen	G	Jr.	3.3	4.0	5.8	Tied career high with 10 asst vs. WIN
11	Marsha Howard	F	Sr.	15.0	9.8	1.0	Big Ten Honor Roll, 11/12
22	Niya Beverley	G	So.	6.8	2.8	4.2	Tied career high 6 assts in 2 games
34	Imani Lewis	F	Fr.	13.3	9.3	0.5	10+ points in all four games

QUICK FACTS

GENERAL

City/State:	Madison, Wis.
Population:	245,691
Founded:	1848
Enrollment:	43,820 (Undergraduates: 29,931)
Nickname:	Badgers
Colors:	Cardinal (PMS 200) and White
Affiliation:	NCAA I
Conference:	Big Ten
Chancellor:	Rebecca Blank
Athletic Director:	Barry Alvarez
Senior Women's Administrator:	Terry Gawlik
Athletic Dept. Phone:	608-262-1866
Website:	UWBadgers.com

HEAD COACH JONATHAN TSIPIS

Alma Mater:	North Carolina, 1996
Career Record:	114-81 (7th year)
Record at Wisconsin:	22-43 (3rd year)

ASSISTANT COACHES

- Myia Johnson (3rd year)
Rutgers, 2010
- Craig Carter (3rd year)
Rutgers, 1992
- Kayla Tetschlag (1st year)
Green Bay, 2011

SUPPORT STAFF

- Michelle Nason (Director of Operations)
- Hailee Barron (Graduate Assistant)
- Ryan Murray (Video Coordinator)
- Deborah Yenser (Athletic Trainer)
- Abby Busch (Strength & Conditioning Coach)

TEAM INFORMATION

2017-18 Overall Record:	9-21
2017-18 Big Ten Record (Finish):	2-14 (13th)
2017-18 Final Rank:	Not Ranked
Starters Returning/Lost:	4/1
Letterwinners Returning/Lost:	8/4
Newcomers:	7

TEAM HISTORY

First Year of Women's Basketball:	1974-75
Record (Years):	592-663 (45th yr)
Big Ten Record (Years):	239-372 (36th yr)
Big Ten Championships:	None
NCAA Tournament Record:	2-7 (7 years)
Last NCAA Tournament:	2010/1st Round L, Vermont, 64-55
WNIT Tournament Record:	15-5 (6 years)
Last WNIT Tournament:	2011/1st Round L, Illinois State 62-59
First Team All-Big Ten Selections:	10

ARENA INFORMATION

Name:	Kohl Center
Capacity:	17,142
Record at Kohl Center:	151-99 (.606)
Kohl Center Press Row:	(608) 265-4333



ATHLETIC COMMUNICATIONS

Diane Nordstrom
Associate Director
Office: (608) 262-9024
Cell: (608) 658-3644
Email: dkn@athletics.wisc.edu

WISCONSIN OPENS SEASON 4-0

- The Badgers opened a season 4-0 for the first time since 2006-07 after edging IUPUI, 65-64 in overtime, on Monday. Senior **Marsha Howard** scored the game-winning lay up with three seconds left in overtime.
- Wisconsin won its first overtime game since a 76-64 OT victory on Illinois on Jan. 3, 2014.

MARSHA, MARSHA, MARSHA

- Senior **Marsha Howard** has scored in double figures in 11 straight games, dating back to the 2017-18 season. The 6-foot forward is averaging 16.4 points per game over the stretch while shoot 54.1 percent from the field.
- Howard leads the Badgers and ties for 11th in the Big Ten with 15 points per game. She is also Wisconsin's leading rebounder, ranking seventh in the conference with 9.8 boards per game.
- Howard shoots 50.9 percent from the field, which ranks 13th in the Big Ten. She has shot 50-percent-or-better in three of four games this season.

MAN, OH MAN IMANI!

- Freshman **Imani Lewis** picked up her second double-double of the season against IUPUI on Monday. The 6-foot-1 forward led the Badgers with 11 rebounds while adding 12 points.
- Lewis scored a career-high 19 points to lead the Badgers over NDSU on Nov. 17. She shot 6-11 (54.5 percent) from the field and was a perfect 7-7 from the

free-throw line. She also added seven rebounds against the Bison.

- Lewis ranks second on the team and ties for 23rd in the Big Ten with 13.3 points per game, scoring in double figures in all four games, while adding 8.7 rebounds per game. She has also made and taken the most free throws on the squad.

DOMINATING BOARDS

- Wisconsin has outrebounded all four opponents this season, ranking fifth in the Big Ten with a +16.8 rebounds per game average.
- The Badgers rank third in the conference with 50 boards per game while giving up just 33.3 rebounds per game.
- Wisconsin outrebounded Winthrop 71-30, Milwaukee 46-39, NDSU 36-26, and IUPUI 47-38.
- The 71 boards vs. Winthrop ranks second on the UW single-game record list, trailing only the school record of 74 rebounds vs. Western Illinois on Jan. 13, 1982.
- Senior **Marsha Howard** ranks seventh in the Big Ten with 9.8 rebounds per game while freshman **Imani Lewis** ties for ninth with 9.3 boards per game.

IMPROVING BALL CONTROL

- The Badgers are improving their ball control, tallying 13-or-fewer turnovers their last three games.
- Wisconsin ties for third in the Big Ten with 14.8 turnovers per game this season, which would rank fourth on the UW single-season record list.

2018-19 BADGER ROSTER

No.	Name	Pos.	Ht.	Yr.	Hometown/High School (Last School)
2	Kelly Karlis	G	6-2	RS Sr.	Medinah, Ill./Montini Catholic (Ohio)
3	Suzanne Gilreath	G	5-5	Jr.	Brooklyn Park, Minn./Fridley
10	Kendra Van Leeuwen	G	5-10	Jr.	Brantford, Ontario/St. John's College
11	Marsha Howard	F	6-0	Sr.	Chicago, Ill./Crete Monee
12	Carmen Backes	F	6-2	Fr.	Lindstrom, Minn./Chisago Lakes
14	Abby Laszewski	F	6-3	Jr.	Hartford, Conn./Avon
15	Lexy Richardson	G	5-9	RS Sr.	Verona, Wis./Verona Area
20	Diamond Bragg	G	5-9	Fr.	Camp Hill, Pa./Camp Hill
22	Niya Beverley	G	5-7	So.	Laurel, MD./ St. John's College
23	Jasmine Hale	G	5-9	Fr.	Cincinnati, Ohio/West Clermont
30	Kara Crowley	F	5-10	So.	Beaver Dam, Wis./ Beaver Dam
33	Courtney Fredrickson	F	6-1	Jr.	Minnetonka, Minn./Minnetonka
34	Imani Lewis	F	6-2	Fr.	Willingboro, N.J./Life Center Academy
43	Grace Mueller	F	6-2	RS So.	Madison, Wis./Verona
44	Alex Luehring	G	6-2	RS Fr.	Verona, Wis./Verona (Green Bay)

Head Coach: Jonathan Tsipis

Assistant Coaches: Craig Carter, Myia Johnson, Kayla Tetschlag

Director of Operations: Michelle Nason

Video Coordinator: Ryan Murray

Graduate Assistant: Hailee Barron

PRONUNCIATION GUIDE

#2 Kelly CAR lis | #3 Suzanne gill WREATH | #10 KEN dra VAN LEW en | #14 Abby lah SHEH ski | #22 NYE ah Beverley | #34 eh MON ee Lewis | #43 Grace MEW ler | HC Jonathan SIP iss | AC MY ah Johnson

- Sophomore Niya Beverley ranks eighth in the Big Ten with an assist-to-turnover ratio of 3.4 while junior **Kendra Van Leeuwen** ranks 12th in the Big Ten with an assist-to-turnover ratio of 3.1.
- The duo combine for 39 of the Badgers 65 assists this season (9.8/game) while tallying only 12 turnovers (3.0/game). Van Leeuwen averages 5.5 assists per game, which ranks sixth in the Big Ten, while Beverley ties for 10th with 4.3 assists per game.

BALANCED SCORING

- The Badgers have had balanced scoring this season with three-or-more players tallying 10-or-more points in all four games.
- Senior **Marsha Howard** and freshman **Imani Lewis** have both scored in double figures all four games this season, averaging 15.0 and 13.3 points, respectively, per game on the season.
- Redshirt senior **Kelly Karlis** and redshirt freshman **Alex Luehring** have 10-or-more points in two games this season, adding 8.3 and 7.8 points per game, respectively.
- Junior **Abby Laszewski** has scored eight-or-more points in all four games this season, ranking third on the team with 9.0 points per game.

TOP FRESHMEN IN THE BIG TEN

- Wisconsin has two of the top freshmen in the Big Ten in scoring and rebounding.
- **Imani Lewis** ranks third in scoring (13.3) and second in rebounding (9.3). **Alex Luehring** ties for 10th in scoring (7.8) and ties for 13th in rebounding (3.8). The red-shirt freshman also leads all conference newcomers in 3-point percentage (.409) and 3-pointers made (2.3).
- Freshman **Diamond Bragg** has also played in all four games for UW, averaging 9.5 minutes per game and contributing 1.3 rebounds and 0.7 assists per game.

TOUGH DEFENSE

- UW has played tough defense, allowing opponents to shoot just 32.2 percent from the field, which ranks fifth in the Big Ten.
- Only IUPUI has scored more than 60 points on Wisconsin this season, tallying 64 points in overtime on Monday. Opponents average just 53.8 points per game, which ranks seventh in the Big Ten.
- The Badgers rank 11th in the Big Ten with a +14.5 scoring margin.

SCORING WELL INSIDE

- The Badgers are scoring well in the paint, averaging 37.5 points per game while opponents are averaging just 17.3 points per game.

- UW is also scoring 14.8 points per game on second-chance baskets while foes average just 4.3 points per game on second chances.
- Wisconsin is averaging 14.0 points per game off turnovers and 11.8 on the fast break. The Badgers bench has outscored three of four opponents this season, averaging 20.5 points per game.

FREE THROW STRUGGLES

- The Badgers have struggled with their free-throw shooting, ranking 14th in the Big Ten at 46.7 percent (35-75).
- UW hit just 3-16 (.188) vs. Winthrop in their season opener on Nov. 8. Wisconsin improved to 13-27 (.481) at Milwaukee on Nov. 13, shot as season-best 13-17 (.765) against North Dakota State on Nov. 17, but dropped to just 40 percent (6-15) against IUPUI on Monday.

INJURIES HURT

- Wisconsin has struggled with injuries this season.
- The Badgers lost junior starter **Courtney Fredrickson** for the season to a knee injury at Milwaukee on Nov. 13
- Junior **Suzanne Gilreath** and freshman **Jasmine Hale** has missed the first four games of the season due to a foot and hand injury, respectively.
- Freshman **Carmen Backes** will also miss the year due to a knee injury.

SEASON IMPROVEMENTS

- The Badgers have made overall improvements in six of eight statistical categories compared to 2017-18.
- Wisconsin's biggest improvement is in rebounds where it has an improvement of 15.2 boards per game.

2018-19		2017-18	+/-
.407	FG%	.398	+0.009
.323	3-pt FG%	.296	+ .027
.467	FT%	.663	-1.196
50.0	RPG	35.8	+15.2
16.3	APG	13.0	+3.3
14.8	TOPG	15.3	-0.5
4.8	BPG	2.8	+2.0
5.8	SPG	6.1	-0.3

PERSONAL BESTS SET

- After three games, the Badgers have recorded 55 personal bests this season, with 36 coming from first-year players.
- Against IUPUI on Monday, five Badgers set or tied 13 personal bests.
- Sophomore **Niya Beverley** shot 2-3 from 3-point range, setting career highs for triples made, attempted and percentage (.667). She also tied her career-high with six assists and played a career best 39 minutes.
- Redshirt senior **Kelly Karlis** played a career high 38 minutes against the Jags.

2018-19 Big Ten Standings

	Big Ten	Overall
Maryland	0-0 .000	4-0 1.000
Minnesota	0-0 .000	4-0 1.000
Northwestern	0-0 .000	4-0 1.000
Purdue	0-0 .000	4-0 1.000
Rutgers	0-0 .000	4-0 1.000
Wisconsin	0-0 .000	4-0 1.000
Illinois	0-0 .000	3-0 1.000
Indiana	0-0 .000	3-0 1.000
Iowa	0-0 .000	3-0 1.000
Michigan	0-0 .000	3-0 1.000
Michigan State	0-0 .000	3-0 1.000
Penn State	0-0 .000	3-1 .750
Nebraska	0-0 .000	1-2 .333
Ohio State	0-0 .000	1-2 .333

ALL GAMES

12. Scoring Offense	68.2
7. Scoring Defense	53.8
11. Scoring Margin	+14.5
12. Field Goal Pct.	.407
5. Field Goal Defense	.322
7. 3-pt Field Goal Pct.	.323
12. 3-pt Field Goal Defense	.333
T9. 3-pt Field Goals Made	5.0
14. Free Throw Pct.	.467
3. Rebounding Offense	50.0
8. Rebounding Defense	33.2
5. Rebounding Margin	+16.8
3. Offensive Rebounds	18.3
7. Offensive Rebound Pct.	.417
6. Defensive Rebounds	31.8
3. Defensive Rebound Pct.	.804
8. Assists	16.3
9. Assist/Turnover Ratio	1.1
3. Turnovers per game	14.8
T6. Turnover Margin	0.2
T5. Blocked Shots	4.8
12. Steals	5.8

INDIVIDUAL

Scoring	T11. Marsha Howard	15.0
	T23. Imani Lewis	13.3
FG%	13. Marsha Howard	.509
3-pt made	T6. Alex Luehring	2.7
3-pt %	T6. Alex Luehring	.409
Rebounds	7. Marsha Howard	9.8
	T9. Imani Lewis	9.3
Off Rebs	6. Marsha Howard	4.5
	T7. Imani Lewis	4.3
	T14. Abby Laszewski	3.0
Def Rebs	T11. Marsha Howard	5.3
Assists	6. Kendra Van Leeuwen	5.5
A/TO Ratio	8. Niya Beverley	3.4
	12. Kendra Van Leeuwen	3.1
Blocks	T11. Abby Laszewski	1.8
	T15. Marsha Howard	1.3

FRESHMEN

Scoring	3. Imani Lewis	13.3
	10. Alex Luehring	7.8
Rebounding	2. Imani Lewis	9.3
	T13. Alex Luehring	3.8
3-pt %	1. Alex Luehring	.400
3-pt made	1. Alex Luehring	2.3

CAREER COUNTDOWN

Milestone	Name	# Needed
700 points	Marsha Howard	4
400 points	Kelly Karlis	23
200 points	Niya Beverley	34

Milestone	Name	Opponent
400 rebounds	Marsha Howard	vs. Winthrop, 11/8
300 rebounds	Courtney Fredrickson	vs. Winthrop, 11/8
	Kelly Karlis (Career)	vs. NDSU, 11/17
200 rebounds	Kendra Van Leeuwen	vs. Winthrop, 11/8
100 rebounds	Niya Beverley	vs. Winthrop, 11/8
200 assists	Kendra Van Leeuwen	vs. NDSU, 11/17

- Freshman **Imani Lewis** shot took a career high 16 field goal attempts vs. IUPUI. She also tied her career high with 11 rebounds, one assist and one block.
- Redshirt sophomore **Grace Mueller** scored the first two points of her career, going a perfect 1-1 from field-goal range.
- Junior **Kendra Van Leeuwen** tied her career high, playing 39 minutes.

COUNTING DOWN

- Three Badgers are counting down to career milestones.
- Sophomore **Niya Beverley** needs 34 points for 200 career points.
- Senior **Marsha Howard** is four points away from 700 career points.
- Redshirt senior **Kelly Karlis** will reach 400 career points with 23 tallies.

THREE DOUBLE-DOUBLES

- The Badgers have five double-doubles this season, including two apiece by senior **Marsha Howard** and freshman **Imani Lewis**.
- Lewis picked up her second career double-double vs. IUPUI with 12 points and a team-high 11 rebounds.
- Fredrickson, Courtney 14 pts, 11 reb; WINTHROP
Howard, Marsha 18 pts, 14 reb; WINTHROP
Howard, Marsha 16 pts, 10 reb; at Milwaukee
Lewis, Imani 10 pts, 11 reb; WINTHROP
Lewis, Imani 12 pts, 11 reb; IUPUI
- Three Badgers recorded double-doubles against Winthrop, the first time since 1996 that three UW players tallied double-doubles in the same game.
- Howard had 18 points and 14 rebounds; junior **Courtney Fredrickson** had 14 points and 11 rebounds; and Lewis had 10 points and 11 rebounds.
- The last time UW had three players with double-doubles was vs. Purdue on Jan. 26, 1996. Barb Franke (38 pts/13 reb), Ann Klapperich (23 pts/12 reb) and Keisha Anderson (14 pts/11 asst) set the mark.

THREE JOIN BADGER STAFF

- The Badgers added three members to their staff in 2018. **Kayla Tetschlag** is in her first season as an assistant coach and the co-recruiting coordinator while **Ryan Murray** will serve as the team’s video coordinator and director of scouting. **Hailee Barron** is the team’s graduate assistant.
- Tetschlag, who received a 2018 WBCA Thirty Under 30 award, comes to Wisconsin after two years as an assistant coach and recruiting coordinator at the University of South Dakota. In her two seasons, the Coyotes were 52-16, winning the 2017-18 regular season Summit League championship and competing in back-to-back WNITs.
- A native of Sheboygan, Wisconsin, Tetschlag was named the Horizon League Co-Player of the Year in 2011 for the Green Bay Phoenix. As a senior, she received the Horizon League Cecil N. Colman Medal of Honor, the league’s most prestigious individual honor for outstanding achievement in academics, athletics and extracurricular activities.
- Murray served as a video assistant with the Ohio State women’s basketball program. Murray played one season at Centre College (Ky.), aiding the Colonels to the Southern Athletic Conference championship and an appearance in the second round of the NCAA tournament. After transferring to Ohio State, Murray participated in the OSU men’s club basketball team, winning the National Intramural and Recreational Sports Association Championship with Murray being named the tournament MVP. He also served as a practice player for the Buckeye women’s basketball team for one season.
- Barron earned four letters at James Madison University. She played in 132 games for her career, which ties for sixth in JMU history. As a guard, Barron made 129 3-point field goals, ranking 10th all time for the Dukes. She scored 522 points in her career, averaging 4.0 points per game. She will be start graduate school in January in educational leadership and policy analysis with a concentration in athletic administration.

EXPERIENCE RETURNS

- Wisconsin returns four starters and eight letterwinners from 2017-18. UW brings back 74 percent of its points (1,343 of 1,819) and 67 percent (719 of 1,073) of its rebounds.
- Senior **Marsha Howard** as well as juniors **Courtney Fredrickson** and **Kendra Van Leeuwen** are two-year starters while freshman **Niya Beverley** started at point guard last season.
- Junior **Abby Laszewski** started 17 games as a sophomore while junior **Suzanne Gilreath** has been one of the top sixth players in the conference the last two seasons.

TOUGH SCHEDULE IN 2018-19

- The Badgers will play a tough schedule in 2018-19 with 14 teams that advanced to post-season play in 2018.
- UW plays four post-season teams during the non-conference season.
- Milwaukee (21-12 in 2017-18) advanced to the second round of the WNIT while IUPUI (22-10) lost in the first round of the WNIT.
- Duke (24-9) was a 2018 NCAA Sweet 16 team while Green Bay (29-4) lost in the first round of the NCAA tournament.
- In 2017-18, the Big Ten had a record nine teams win 20-or-more games with 10 teams advancing to post-season play. Wisconsin welcomes to the Kohl Center No. 10/15 Ohio State (28-7 in 2017-18) while also hosting six teams that received votes in the final polls - Purdue (20-14), Indiana (23-14), Minnesota (24-9), Nebraska (21-11), Michigan (23-10) and Michigan State (19-14).
- The Buckeyes, Golden Gophers and Wolverines all advanced to the second round of the NCAA tournament while the Huskers competed in the first round. The Hoosiers won the 2018 WNIT Championship while the Spartans and Boilermakers both advanced to the Sweet 16. Penn State (16-16) also competed in the WNIT.

MOST IMPROVED SCORERS

- Wisconsin had two of the most improved scorers in the Big Ten in 2017-18.
- **Marsha Howard** ranked 11th, improving her scoring from 7.5 points per game in 2016-17 to 12.4 points per game this season, an improvement of 4.9 points per game.
- **Abby Laszewski** tied for 12th in the Big Ten, upping her scoring by 4.5 points per game (1.2 to 5.7).

	16-17	17-18	+
1. Kalila Charles, So, MD	9.7	17.9	+8.2
2. Abi Scheid, So, NU	5.0	12.0	+7.0
3. Stephanie Jones, So, MD	4.1	10.8	+6.7
4. Amari Carter, Jr, PSU	7.9	14.2	+6.3
5. Kym Royster, Jr, IND	4.2	10.3	+6.1
6. Linnae Harper, Sr, OSU	8.4	14.4	+6.0
7. Maddie Simon, Jr, NEB	4.1	10.1	+6.0
8. Lamina Cooper, Sr, PUR	4.1	10.0	+5.9
9. J Travascio-Green, So, PSU	5.8	11.2	+5.4
10. Steph Mavunga, Sr, OSU	11.4	16.6	+5.2
11. Marsha Howard, Jr, WIS	7.5	12.4	+4.9
12. Ae’Rianna Harris, So, PUR	7.2	11.7	+4.5
Abby Laszewski, So, WIS	1.2	5.7	+4.5

TRANSFERS ADD EXPERIENCE

- Wisconsin welcomes in seven newcomers, including two transfers.
- Redshirt senior **Kelly Karlis** will be eligible in 2018-19 after missing last season due to NCAA transfer rules. The 6-2 guard averaged 5.1 points and 4.4 rebounds per game in three years at Ohio University.



THE TSIPIS FILE

- Record at Wisconsin: 22-43 (3rd year)
- Career Record: 114-81 (7th year)
- Alma Mater: North Carolina, 1996 (Pharmacy)

NOTABLE ATHLETES

Cayla McMorris, Wisconsin

- Honorable mention All-Big Ten, 2017, 2018

Marsha Howard, Wisconsin

- Honorable mention All-Big Ten 2018

Avyanna Young, Wisconsin

- Honorable mention All-Big Ten 2017

Jonquel Jones, George Washington

- WNBA Los Angeles Sparks, 2016
- Honorable Mention All-American, 2014, 2016
- 2015 Atlantic 10 Player of the Year

Ciara Washington, George Washington

- First-team All-Atlantic 10, 2015, 2016
- Atlantic 10 Rookie of the Year

Kayla McBride, Notre Dame

- WNBA San Antonio Stars, 2014
- Honorable Mention All-American 2014, 2016
- First-team All-Big East, 2013

Jacqueline Batteast, Notre Dame

- WNBA Minnesota Lynx, 2005
- Third-team All-American, 2005
- First-team All-Big East, 2004, 2005

Charel Allen, Notre Dame

- WNBA Sacramento Monarchs, 2008
- Honorable Mention All-American, 2008
- First-team All-Big East, 2007, 2008

Lindsay Schrader, Notre Dame

- Honorable Mention All-American, 2010
- First-team All-Big East, 2009, 2010

HEAD COACH JONATHAN TSIPIS

- Won his 100th career game vs. Illinois on Feb. 22, 2017
- Won his first game at Wisconsin on Nov. 20, 2016 with a 60-55 win over Butler
- Named seventh Badger head coach on March 31, 2016
- 2015 Atlantic 10 Conference Coach of the Year
- Led George Washington to two NCAA tournament appearances (2015, 2014)
- Guided the Colonials to two Atlantic 10 titles
- Won 20 games in three straight seasons
- Four-year record of 92-38 (.708) at George Washington
- Associate coach/assistant coach at Notre Dame for nine seasons
- Fighting Irish were 228-77 during his tenure
- Aided Notre Dame to two national runner-ups and five Sweet 16 appearances
- As recruiting coordinator for Fighting Irish, had one of the nation's top-20 recruiting classes all nine seasons, including three top-10 classes
- 2011 CollegeInsider.com's Top 10 assistant coaches in the nation
- 2009 BasketballScoop.com Assistant Coach of the Year
- Mentored four All-Americans and eight WNBA draft picks at Notre Dame
- On the court, helped coordinate Notre Dame's game plans that resulted in more than 30 wins over nationally-ranked opponents
- Father Lou played for the Greek national team at age 15, had a standout career at Baldwin-Wallace College and later played professionally in Greece. A member of the Naismith Memorial Basketball Hall of Fame (1987; lifetime member as an official) and Hellenic Sports Hall of Fame (1997), Lou Tsipis also coached at the high school and collegiate levels for more than 20 years.
- Brother Dean played at Case Western Reserve
- Sister LuAnn was a three-sport letterwinner at Baldwin-Wallace
- Niece Amanda played basketball at Notre Dame from 2004-08, serving as team captain her final year and winning the program's Spirit Award each of her four seasons
- Born in Cleveland, Tsipis grew up in Hinckley, Ohio, and moved to Durham, North Carolina, as a junior in high school
- Graduated from North Carolina in 1996 with a bachelor's degree in pharmacy
- Tsipis and his wife Leigh are the parents of two children, daughter Emily (13) and son Joshua (11).

TSIPIS YEAR-by-YEAR

Wisconsin—Head Coach

Year	Record	Pct.	Conf.	Pct.	B1G Finish	Postseason
2018-19	4-0	1.000	0-0	.000		
2017-18	9-21	.300	2-14	.125	13th	
2016-17	9-22	.290	3-13	.188	T11th	
3rd year	22-43	.338	5-27	.156		

George Washington—Head Coach

Year	Record	Pct.	Conf.	Pct.	A-10 Finish	Postseason
2015-16	26-7	.788	13-3	.813	1st	A-10 Champions; NCAA First Round
2014-15	29-4	.879	15-1	.938	1st	A-10 Champions; NCAA First Round
2013-14	23-11	.676	11-5	.688	T2nd	WNIT Third Round
2012-13	14-16	.467	7-7	.500	T7th	
4 years	92-38	.708	46-16	.742		

7th year 114-81 .585 51-43 .548

Notre Dame—Associate Head Coach/Assistant Coach

Year	Record	Pct.	Conf.	Pct.	Big East Finish	Post-Season
2011-12	35-4	.897	15-1	.938	1st	NCAA Runners Up
2010-11	31-8	.795	13-3	.813	T2nd	NCAA Runners Up
2009-10	29-6	.838	12-4	.750	T4th	NCAA Sweet 16
2008-09	22-9	.710	10-6	.625	T4th	NCAA First Round
2007-08	25-9	.735	11-5	.688	4th	NCAA Sweet 16
2006-07	20-12	.625	10-6	.625	T5th	NCAA Second Round
2005-06	18-12	.600	8-8	.500	10th	NCAA First Round
2004-05	27-6	.818	13-3	.813	T2nd	NCAA Second Round
2003-04	21-11	.656	12-4	.750	T2nd	NCAA Sweet 16
9 years	228-77	.748	104-40	.722		



PITTSBURGH

Last Game:
Pitt (2-3) dropped a 70-41 decision on the road Monday night to

Georgetown at McDonough Arena.

Senior Cassidy Walsh paced the Panthers in scoring, finishing with 11 points. Fellow senior Danielle Garven led the way on the glass, pulling down eight boards.

PITTSBURGH

Location: Pittsburgh, Pa.
Enrollment: 28,664
Nickname: Panthers
Colors: Blue and Vegas Gold
Arena: Petersen Events Center (12,508)
Conference: Atlantic Coast
2017-18 Overall Record: 10-20
2017-18 ACC Record: 2-14/T13th
2017-18 Postseason: Did not compete
Final ranking: Not ranked
Letter Winners Returning/Lost: 8/4
Starters Returning/Lost: 3/2
Newcomers: 3
Head Coach: Lance White
Pitt Record: 2-3 (1st year)
Career Record: 352-148 (16th year)
Sports Information: Carly Weisenbach
Email: cweisenbach@athletics.pitt.edu
Phone: (412) 648-8240

vs. Pittsburgh

Wisconsin leads 2-1
In Pittsburgh: Wisconsin leads 1-0
Neutral: Series tied 1-1

Date	W/L	Score	Location
12-7-85	L	64-73	Charlottesville, Va.
11-30-01	W	95-75	Tucson, Ariz.
11-29-17	W	58-57	Pittsburgh, Pa.

COMPARING THE TEAMS

WIS		PITT
4-0	Record	2-3
109-268	FGM-FGA	115-301
.407	FG%	.382
20-62	3FG-3FGA	37-101
.323	3FG%	.366
35-75	FT-FTA	42-64
.467	FT%	.656
200	REB	198
50.0	RPG	39.6
33.2	OPP RPG	36.8
65/16.3	APG	77/15.4
59/14.8	TOPG	86/17.2
14/4.7	BPG	24/4.8
23/5.8	SPG	39/7.8
273	PTS	309
68.2	PPG	61.8
215	OPP PTS	281
53.8	OPP PPG	56.2



TENNESSEE STATE

Last Game:
Tennessee State dropped a, 92-67, decision to Troy Friday afternoon in Trojan Arena.

TSU (0-3) nearly matched Troy (2-1) point-for-point in the second half but it wasn't enough to overcome the deficit built in the first two quarters.

Taylor Roberts led TSU with 21 points while Tia Wooten finished with 16. Jaden Wrightsell pulled down a team-best nine rebounds in the contest.

The Tigers play at Vanderbilt on Tuesday night.

TENNESSEE STATE

Location: Nashville, Tenn.
Enrollment: 9,165
Nickname: Lady Tigers
Colors: Reflex Blue and White
Arena: Gentry Center (9,100)
Conference: Ohio Valley
2017-18 Overall Record: 6-21
2017-18 Ohio Valley Record: 4-14/11th
2017-18 Postseason: Did not compete
Final ranking: Not ranked
Letterwinners Returning/Lost: 4/1
Starters Returning/Lost: 8/1
Head Coach: Jessica Kern
School Record: 6-24 (2nd year)
Career Record: 67-109 (7th years)
Sports Information: Zekeya A. Harrison
Email: zanderson01@tnstate.edu
Phone: (615) 963-1867
Cell: (615) 963-5363
On-line: tsutigers.com

vs. Tennessee State

Wisconsin leads 1-0
Neutral: Wisconsin leads 1-0

Date	W/L	Score	Location
11-27-16	W	80-70	Las Vegas, Nev.

COMPARING THE TEAMS

WIS		TSU
4-0	Record	0-3
109-268	FGM-FGA	62-178
.407	FG%	.348
20-62	3FG-3FGA	13-53
.323	3FG%	.245
35-75	FT-FTA	49-65
.467	FT%	.754
200	REB	111
50.0	RPG	37.0
33.2	OPP RPG	39.3
65/16.3	APG	29/9.7
59/14.8	TOPG	59/19.7
14/4.7	BPG	4/1.3
23/5.8	SPG	26/8.7
273	PTS	186
68.2	PPG	62.0
215	OPP PTS	223
53.8	OPP PPG	74.3



ARKANSAS

Last Game:
Junior Alexis Tolefree paced the Razorbacks (2-1) in scoring for the

third consecutive game dropping in 22 points in an 88-85 loss to No. 22 Arizona State in Bud Walton Arena on Sunday night.

Tolefree (22) and Chelsea Dungee (20) were joined in double figures by Malica Monk with 13 points and Mason with 11 points. Arkansas was at a significant height disadvantage and ASU outrebounded the Razorbacks 43-35. The Sun Devils scored 44 points in the paint and got 42 bench points.

Arkansas won the fourth quarter for the third game in a row. The Razorbacks outscored the Sun Devils, 23-19, in the final 10 minutes hitting nine shots from the floor including two of their six 3-pointers. Arkansas was 3-for-6 from the line in the final frame.

ARKANSAS

Location: Fayetteville, Ark.
Enrollment: 27,558
Colors: Cardinal and White
Nickname: Razorbacks
Conference: SEC
Home Arena: Bud Walton Arena (19,200)
2017-18 Record: 13-18
2017-18 SEC Record: 3-13/13th
2017-18 Postseason: Did not compete
Final Ranking: Not ranked
Starters Returning/Lost: 4/1
Letterwinners Returning/Lost: 10/1
Newcomers: 5
Head Coach: Mike Neighbors
School Record: 15-19 (2nd year)
Career Record: 113-59 (6th year)
Athletic Communications: Jeri Thorpe
Email: jthorpe@uark.edu
Phone: (479) 575-5037
Cell: (479) 283-3344
On-Line: ArkansasRazorbacks.com

vs. Arkansas

Arkansas leads 1-0
In Fayetteville: Arkansas leads 1-0

Date	W/L	Score	Location
3-23-99	L	64-67	Fayetteville, Ark.

COMPARING THE TEAMS

WIS		ARK
4-0	Record	2-1
109-268	FGM-FGA	92-189
.407	FG%	.487
20-62	3FG-3FGA	22-58
.323	3FG%	.379
35-75	FT-FTA	43-73
.467	FT%	.589
200	REB	115
50.0	RPG	38.3
33.2	OPP RPG	38.7
65/16.3	APG	35/11.7
59/14.8	TOPG	48/16.0
14/4.7	BPG	27/2.3
23/5.8	SPG	27/9.0
273	PTS	249
68.2	PPG	83.0
215	OPP PTS	206
53.8	OPP PPG	68.7

Record when . . .

Overall:	4-0
Home:.....	3-0
Away:	1-0
Neutral:.....	0-0
Leads at halftime:.....	3-0
Trails at halftime:.....	1-0
Against AP-ranked opponents:	0-0
Against unranked teams:.....	3-0
Big Ten:	0-0
Leads at halftime:.....	0-0
Trails at halftime:.....	0-0
Against AP-ranked opponents:	0-0
Against unranked teams:.....	0-0
More field goals than opponent:	4-0
Fewer field goals than opponent:.....	0-0
Higher FG % than opponent:	3-0
Lower FG % than opponent:.....	0-0
Same FG% as opponents:.....	1-0
More 3-pt field goals than opponent:	2-0
Fewer 3-pt field goals than opponent:	2-0
Higher 3-pt FG% than opponent.....	3-0
Lower 3-pt FG% than opponent	1-0
More free throws than opponent:	1-0
Fewer free throws than opponent:.....	3-0
Higher FT % than opponent:	1-0
Lower FT % than opponent:.....	3-0
More rebounds than opponent:	4-0
Fewer rebounds than opponent:.....	0-0
More fouls than opponent:	1-0
Fewer fouls than opponent:.....	3-0
More turnovers than opponent:	2-0
Fewer turnovers than opponent:	2-0
Scores 80-100 points:	0-0
Scores 70-79 points:	1-0
Scores 60-69 points:	3-0
Scores 50-59 points:	0-0
Scores 40-49 points:.....	0-0
Scores less than 40 points.....	0-0
Allows 80-or-more points	0-0
Allows 70-79 points:.....	0-0
Allows 60-69 points:.....	1-0
Allows less than 60 points;.....	3-0
UW shot 40% or better from field:.....	2-0
UW shot less than 40% from field:.....	2-0
Opponent shot 40% or better from field:.....	1-0
Opponent shot less than 40% from field:	3-0
UW bench outscores opponents' bench:.....	3-0
Opponent bench outscores UW's bench.....	1-0
On Sunday	0-0
On Monday.....	1-0
On Tuesday.....	1-0
On Wednesday.....	0-0
On Thursday.....	1-0
On Friday.....	0-0
On Saturday.....	1-0
Games are decided by:	
Five points or less.....	1-0
Six to 10 points.....	0-0
More than 10 points.....	3-0
One player scores in double digits:	0-0
Two players score in double digits:.....	0-0
Three players score in double digits:	1-0
Four players score in double digits:	3-0
Five players score in double digits:.....	0-0
Longest win streak:.....	4
Current win streak:	4
Longest losing streak:	0
Current losing streak:.....	0

Charting the Badgers

GAMES PLAYED

	2014-15	2015-16	2016-17	2017-18	2018-19	Total	Current Streak	Longest Streak
Marsha Howard	—	15	31	30	4	80	64	64
Kelly Karlis	8	32	27	RS	4	71	4	37
Kendra Van Leeuwen	—	—	31	30	4	65	65	65
Courtney Fredrickson	—	—	31	30	2	63	63	63
Suzanne Gilreath	—	—	31	30	0	61	0	61
Abby Laszewski	—	—	23	30	4	57	34	34
Niya Beverley	—	—	—	30	4	34	34	34
Lexy Richardson	—	3	13	13	1	30	0	8
Kara Crowley	—	—	—	10	3	13	0	3
Imani Lewis	—	—	—	—	4	4	4	4
Alex Luehring	—	—	—	RS	4	4	4	4
Diamond Bragg	—	—	—	—	4	4	4	4
Grace Mueller	—	—	RS	DNP	4	4	4	4

GAMES STARTED

	2014-15	2015-16	2016-17	2017-18	2018-19	Total	Current Streak	Longest Streak
Kendra Van Leeuwen	—	—	31	29	3	62	2	45
Marsha Howard	—	0	20	28	4	51	9	20
Courtney Fredrickson	—	—	27	20	2	48	0	19
Niya Beverley	—	—	—	29	3	32	29	29
Kelly Karlis	0	0	24	RS	4	28	4	16
Abby Laszewski	—	—	0	17	0	17	0	17
Imani Lewis	—	—	—	—	4	4	4	4

DOUBLE-DIGIT SCORING

	2014-15	2015-16	2016-17	2017-18	2018-19	Total	Current Streak	Longest Streak
Marsha Howard	—	0	10	20	4	35	11	11
Suzanne Gilreath	—	—	10	12	0	22	0	5
Courtney Fredrickson	—	—	7	15	1	23	0	6
Kelly Karlis	3	4	4	RS	2	13	0	2
Kendra Van Leeuwen	—	—	1	4	0	5	0	1
Abby Laszewski	—	—	1	3	1	5	0	1
Imani Lewis	—	—	—	—	4	4	4	4
Niya Beverley	—	—	—	3	1	4	1	1
Alex Luehring	—	—	—	RS	2	2	0	2

20+ SCORING

	2014-15	2015-16	2016-17	2017-18	2018-19	Total	Current Streak	Longest Streak
Marsha Howard	—	0	1	6	0	7	0	1
Suzanne Gilreath	—	—	1	2	0	3	0	1
Abby Laszewski	—	—	0	1	0	1	0	1

DOUBLE-DIGIT REBOUNDING

	2014-15	2015-16	2016-17	2017-18	2018-19	Total	Current Streak	Longest Streak
Marsha Howard	—	0	0	5	2	7	0	2
Courtney Fredrickson	—	—	1	4	1	6	0	2
Kelly Karlis	0	0	2	RS	0	2	0	1
Imani Lewis	—	—	—	—	2	2	1	1

DOUBLE-DIGIT ASSISTS

	2014-15	2015-16	2016-17	2017-18	2018-19	Total	Current Streak	Longest Streak
Kendra Van Leeuwen	—	—	0	1	1	2	0	1

— Did not compete that season
RS Redshirt year

LED TEAM IN SCORING

	2015-16	2016-17	2017-18	2018-19	Total
Marsha Howard	0	2	9	3	14
Suzanne Gilreath	—	5	5	0	10
Courtney Fredrickson	—	2	4	0	6
Niya Beverley	—	—	2	0	2
Abby Laszewski	—	0	2	0	2
Kendra Van Leeuwen	—	1	0	0	1
Imani Lewis	—	—	—	1	1

LED TEAM IN REBOUNDING

	2015-16	2016-17	2017-18	2018-19	Total
Marsha Howard	1	5	18	3	27
Courtney Fredrickson	—	4	7	0	11
Kendra Van Leeuwen	—	2	0	0	2
Niya Beverley	—	—	1	0	1
Imani Lewis	—	—	—	1	1

LED TEAM IN ASSISTS

	2015-16	2016-17	2017-18	2018-19	Total
Kendra Van Leeuwen	—	18	9	2	29
Niya Beverley	—	—	17	2	19
Courtney Fredrickson	—	5	2	0	7
Marsha Howard	0	1	1	0	2
Suzanne Gilreath	—	1	1	0	2

LED TEAM IN STEALS

	2015-16	2016-17	2017-18	2018-19	Total
Kendra Van Leeuwen	—	10	14	2	26
Marsha Howard	2	6	8	1	17
Courtney Fredrickson	—	6	6	0	12
Suzanne Gilreath	—	2	3	0	5
Niya Beverley	—	—	5	0	5
Abby Laszewski	—	1	2	1	4
Imani Lewis	—	—	—	1	1
Lexy Richardson	0	0	1	0	1
Alex Luehring	—	—	RS	1	1

LED TEAM IN BLOCKS

	2015-16	2016-17	2017-18	2018-19	Total
Abby Laszewski	—	3	15	3	21
Marsha Howard	1	8	7	1	17
Courtney Fredrickson	—	2	4	1	7
Kendra Van Leeuwen	—	2	0	1	3
Suzanne Gilreath	—	1	0	0	1
Niya Beverley	—	—	1	0	1
Alex Luehring	—	—	RS	1	1

— Did not compete that season

Career/UW Totals

Includes ties

Career Double-Doubles**Marsha Howard (Career—7/2018-19—2)**

18 points, 14 rebounds vs. Winthrop, 11/8/18
 16 points, 10 rebounds at Milwaukee, 11/13/18
 14 points, 15 rebounds vs. Pittsburgh, 11/29/17
 13 points, 11 rebounds vs. La Salle, 12/2/17
 20 points, 10 rebounds vs. Savannah St., 12/10/17
 10 points, 10 rebounds at Minnesota, 1/18/17
 28 points, 11 rebounds at Michigan State, 2/21/18

Courtney Fredrickson (Career—5/2018-19—1)

14 points, 11 rebounds vs. Winthrop, 11/8/18
 18 points, 11 rebounds vs. Charlotte, 11/12/17
 11 points, 10 rebounds vs. Milwaukee, 12/14/17
 15 points, 10 rebounds at Minnesota, 1/18/17
 15 points, 10 rebounds vs. Nebraska, 2/9/17

Imani Lewis (Career—2/2018-19—2)

10 points, 11 rebounds vs. Winthrop, 11/8/18
 12 points, 11 rebounds vs. IUPUI, 11/19/18

Analysis Stats

Date	Opponent	W/L	Score	Largest Lead				Time Led		In Paint		Off T/O		2nd Chance		Fast Break		Bench	
				WIS	OPP	Ties	LC	WIS	OPP	WIS	OPP	WIS	OPP	WIS	OPP	WIS	OPP	WIS	OPP
11/08	Winthrop	W	76-41	36	0	0	0	39:33	00:00	44	24	18	10	16	4	25	17	22	13
11/13	at Milwaukee	W	68-47	20	9	3	1	24:29	13:53	30	14	13	11	14	0	2	4	28	32
11/17	NDSU	W	64-53	15	4	7	8	27:40	8:24	36	15	19	7	12	4	10	2	18	4
11/19	IUPUI	W	65-64 ^{OT}	6	7	8	11	14:33	22:28	40	16	6	11	17	9	10	4	14	4
Totals									150	69	56	39	59	17	47	27	82	63	
Avg/Game									37.5	17.3	14.0	9.8	14.8	4.3	11.8	6.8	20.5	15.8	

#2 KELLY KARLIS

6-2 • RS Sr. • G

Career Highs

Points: 15 vs. Ball State, 2/11/17
 FG: 6 vs. Ball State, 2/11/17
 FG Att: 11 vs. Murray State, 11/26/16
 FG %: 1.000 (4-4); (2x; MR vs. Akron, 1/27/16)
 3-pt FG: 3 (8x; MR vs. Northern Illinois, 3/8/17)
 3-pt FG Att: 7 (3x; MR vs. Buffalo, 2/22/17)
 3-pt FG%: 1.000 (3-3) vs. Wofford, 11/17/14
 FT: 5 vs. Marshall, 3/17/16
 FT att: 6 (2x; MR vs. Marshall, 3/17/16)
 FT %: 1.000 (2-2) (7x; MR vs. Eastern Michigan, 3/6/17)
 Rebs: 12 vs. Central Michigan, 2/1/17
Assts: 4 (2x; MR at Milwaukee, 11/13/18)
 Stls: 4 vs. Kent State, 3/18/17
 Blks: 5 vs. Kent State, 2/18/17
Min: 38 vs. IUPUI, 11/19/18
 Double-doubles: 1

Season Highs

Points: 11 vs. North Dakota State, 11/17/18
 FG: 4 (2x; MR vs. North Dakota State, 11/17/18)
 FG Att: 9 vs. IUPUI, 11/19/18
 FG %: .571 (4-7) vs. Winthrop, 11/8/11
 3-pt FG: 2 vs. Winthrop, 11/08/18
 3-pt FG Att: 5 vs. Winthrop, 11/08/18
 3-pt FG%: .400 (2-5) vs. Winthrop, 11/08/18
 FT: 2 (2x; MR vs. IUPUI, 11/19/18)
 FT Att: 3 vs. IUPUI, 11/19/18
 FT %: 1.000 (1-1) vs. North Dakota State, 11/17/18
 Rebs: 9 vs. IUPUI, 11/19/18
Assts: 4 at Milwaukee, 11/13/18
 Stls: 1 vs. Winthrop, 11/08/18
 Blks:
Min: 38 vs. IUPUI, 11/19/18

#3 SUZANNE GILREATH

5-4 • Jr. • G

Career Highs

Points: 27 at Illinois, 1/28/18
 FG: 9 at Illinois, 1/28/18
 FG Att: 15 at Minnesota, 1/7/17
 FG %: .800 (8-10) vs. Mississippi Valley State, 12/8/16
 3-pt FG: 7 at Illinois, 1/28/18
 3-pt FG Att: 12 (6x; MR at Illinois, 1/28/18)
 3-pt FG%: 1.000 at Northwestern, 1/11/18
 FT: 4 vs. Charlotte, 11/12/17
 FT Att: 4 vs. Charlotte, 11/12/17
 FT %: 1.000 (4-4) vs. Charlotte, 11/12/17
 Rebs: 5 vs. UT-Rio Grande Valley 12/6/17
 Assts: 3 (4x; MR vs. Rutgers, 2/14/18)
 Stls: 3 vs. Mississippi Valley State, 12/8/16
 Blks: 1 vs. Ole Miss, 11/26/16
 Min: 32 at Illinois, 1/28/18

Season Highs

Points:
 FG:
 FG Att:
 FG %:
 3-pt FG:
 3-pt FG Att:
 3-pt FG%:
 FT:
 FT Att:
 FT %:
 Rebs:
 Assts:
 Stls:
 Blks:
 Min:

#10 KENDRA VAN LEEUWEN

5-10 • Jr. • G

Career Highs

Points: 13 vs. Syracuse, 11/23/17
 FG: 5 vs. Syracuse, 11/23/17
 FG Att: 7 vs. Syracuse, 11/23/17
 FG %: .714 (5-7) vs. Syracuse, 11/23/17
 3-pt FG: 3 vs. Michigan State, 1/25/17
 3-pt FG Att: 5 (3x; MR vs. Milwaukee, 12/14/17)
 3-pt FG%: 1.000 (3-3) vs. Michigan State, 1/25/17
 FT: 4 vs. Rutgers, 3/1/17
 FT Att: 8 vs. Tennessee State, 11/27/16
 FT %: 1.000 (4-4) vs. Rutgers, 3/1/17
 Rebs: 10 vs. Southern, 11/20/17
Assts: 10 (2x; MR vs. Winthrop, 11/08/18)
 Stls: 6 vs. Mississippi Valley State, 12/8/16
 Blks: 1 (8x; MR vs. Iowa, 12/28/17)
Min: 39 (2x; MR vs. IUPUI, 11/19/18)

Season Highs

Points:
 FG: 2 (2x; MR vs. IUPUI, 11/19/18)
 FG Att: 7 at Milwaukee, 11/13/18
 FG %: .333 (2-6) vs. IUPUI, 11/19/18
 3-pt FG: 1 vs. IUPUI, 11/19/18
 3-pt FG Att: 4 vs. North Dakota State, 11/17/18
 3-pt FG%: .500 (1-2) vs. IUPUI, 11/19/18
 FT: 2 vs. North Dakota State, 11/17/18
 FT Att: 2 vs. North Dakota State, 11/17/18
 FT %: 1.000 (2-2) vs. North Dakota State, 11/17/18
 Rebs: 6 vs. IUPUI, 11/19/18
Assts: 10 vs. Winthrop, 11/08/18
 Stls: 2 (3x; MR vs. IUPUI, 11/19/18)
Min: 39 vs. IUPUI, 11/19/18

#11 MARSHA HOWARD

6-0 • Sr. • F

Career Highs

Points: 28 at Michigan State, 2/21/18
 FG: 12 at Michigan State, 2/21/18
 FG Att: 19 (2x; MR at Michigan State, 2/21/18)
 FG %: .857 (6-7) vs. Michigan, 1/1/17
3-pt FG: 1 at Milwaukee, 11/13/18
 3-pt FG Att: 5 vs. Minnesota, 1/23/16
3-pt FG%: 1.000 (1-1) at Milwaukee, 11/13/18
 FT: 9 vs. Syracuse, 11/23/17
 FT: 14 vs. Syracuse, 11/23/17
 FT %: 1.000 (2-2) (5x; MR; vs. Maryland, 1/7/18)
 Rebs: 15 at Pittsburgh, 11/29/17
 Assts: 5 vs. Vanderbilt, 11/25/17
 Stls: 4 vs. Northwestern, 2/28/18
 Blks: 3 vs. North Carolina, 12/1/16
 Min: 37 (2x; MR vs. Vanderbilt, 11/25/17)
 Double-Doubles: 7

Season Highs

Points: 18 vs. Winthrop, 11/08/18
 FG: 9 vs. Winthrop, 11/08/18
 FG Att: 14 (3x; MR vs. IUPUI, 11/19/18)
 FG %: .673 (9-14) vs. Winthrop, 11/08/18
3-pt FG: 1 at Milwaukee, 11/13/18
 3-pt FG Att: 1 at Milwaukee, 11/13/18
3-pt FG%: 1.000 (1-1) at Milwaukee, 11/13/18
 FT: 3 at Milwaukee, 11/13/18
 FT Att: 5 at Milwaukee, 11/13/18
 FT %: .600 (3-5) at Milwaukee, 11/13/18
 Rebs: 14 vs. Winthrop, 11/08/18
 Assts: 1 (4x; MR vs. IUPUI, 11/19/18)
 Stls: 1 (4x; MR vs. IUPUI, 11/19/18)
 Blks: 2 at Milwaukee, 11/13/18
 Min: 33 vs. IUPUI, 11/19/18
 Double-Doubles: 2

#14 ABBY LASZEWSKI

6-3 • Jr. • F

Career Highs

Points: 25 vs. Southern, 11/20/17
 FG: 10 vs. Southern, 11/20/17
 FG Att: 14 vs. Southern, 11/20/17
 FG %: 1.000 (6-6), at Marquette, 12/4/17
 3-pt FG:
 3-pt FG Att:
 3-pt FG%:
 FT: 5 vs. Southern, 11/20/17
 FT Att: 9 vs. Southern, 11/20/17
 FT %: 1.000 (4-4), at Pittsburgh, 11/29/17
Rebs: 10 vs. Winthrop, 11/8/18
 Assts: 2 (2x; MR vs. Marquette, 12/11/16)
 Stls: 1 (10x; MR at Iowa, 2/18/18)
 Blks: 4 vs. Michigan, 1/4/18
 Min: 32 vs. Michigan, 1/4/18

Season Highs

Points: 8 vs. Winthrop, 11/08/18
 FG: 4 (4x; MR vs. IUPUI, 11/19/18)
 FG Att: 9 (2x; MR vs. IUPUI, 11/19/18)
 FG %: .800 (4-5) vs. North Dakota State, 11/17/18
 3-pt FG:
 3-pt FG Att:
 3-pt FG%:
 FT: 3 at Milwaukee, 11/13/18
 FT Att: 8 at Milwaukee, 11/13/18
 FT %: .500 (1-2) vs. IUPUI, 11/19/18
Rebs: 10 vs. Winthrop, 11/8/18
 Assts:
 Stls: 1 vs. North Dakota State, 11/17/18
 Blks: 3 vs. IUPUI, 11/19/18
 Min: 22 (2x; MR vs. IUPUI, 11/19/18)

#15 LEXY RICHARDSON

5-9 • RS Sr. • G

Career Highs

Points: 3 (4x; MR at Marquette, 12/4/17)
 FG: 1 (5x; MR vs. Savannah State, 12/10/17)
 FG Att: 4 vs. Savannah State, 12/10/17
 FG %: 1.000 (1-1) (3x; MR at Marquette, 12/4/17)
 3-pt FG: 1 (4x; MR at Marquette, 12/4/17)
 3-pt FG Att: 2 (2x; MR vs. Savannah State, 12/10/17)
 3-pt FG%: 1.000 (1-1) (3x; MR at Marquette, 12/4/17)
 FT: 2 (2x; MR vs. George Washington, 11/24/17)
 FT Att: 2 (3x; MR at Iowa, 2/18/18)
 FT %: 1.000 (2-2) (2x; MR vs. Geo Washington, 11/24/17)
 Rebs: 1 (6x; MR vs. Savannah State, 12/10/17)
 Assts: 1 at Purdue, 12/31/17
 Stls: 1 (3x; MR at Minnesota, 1/18/17)
 Blks:
 Min: 8 vs. Savannah State, 12/10/17

Season Highs

Points:
 FG:
 FG Att: 1 vs. Winthrop, 11/08/18
 FG %:
 3-pt FG:
 3-pt FG Att: 1 vs. Winthrop, 11/08/18
 3-pt FG%:
 FT:
 FT Att:
 FT %:
 Rebs:
 Assts:
 Stls:
 Blks:
 Min: 1 vs. Winthrop, 11/08/18

#20 DIAMOND BRAGG

5-9 • Fr. • G

Career Highs

Points:
 FG:
FG Att: 2 (2x; MR vs. North Dakota State, 11/17/18)
 FG %:
 3-pt FG:
3-pt FG Att: 1 (2x; MR at Milwaukee, 11/13/18)
 3-pt FG%:
 FT:
 FT Att:
 FT %:
Rebs: 2 (2x; MR vs. North Dakota State, 11/17/18)
Assts: 2 vs. Winthrop, 11/08/18
Stls: 1 vs. Winthrop, 11/08/18
Blks:
Min: 16 vs. Winthrop, 11/08/18

#22 NIYA BEVERLEY

5-7 • So. • G

Career Highs

Points: 14 at Marquette, 12/4/17
 FG: 7 at Marquette, 12/4/17
 FG Att: 14 vs. Milwaukee, 12/14/17
 FG %: .875 (7-8) at Marquette, 12/4/17
3-pt FG: 2 vs. IUPUI, 11/19/18
3-pt FG Att: 3 vs. IUPUI, 11/19/18
3-pt FG%: .667 (2-3) vs. IUPUI, 11/19/18
 FT: 4 at George Washington, 11/24/17
 FT Att: 8 vs. Charlotte, 11/12/17
 FT %: 1.000 (2-2); (3x; MR vs. Iowa, 12/28/17)
 Rebs: 7 vs. Milwaukee, 12/14/17
Assts: 6 (4x; MR vs. IUPUI, 11/19/18)
 Stls: 3 vs. Iowa, 12/28/17
 Blks: 1 (3x; MR vs. Northwestern, 1/21/18)
Min: 39 (2x; MR vs. IUPUI, 11/19/18)

Season Highs

Points: 12 vs. IUPUI, 11/19/18
 FG: 5 vs. IUPUI, 11/19/18
 FG Att: 12 vs. IUPUI, 11/19/18
 FG %: .600 (3-5) at Milwaukee, 11/13/18
3-pt FG: 2 vs. IUPUI, 11/19/18
3-pt FG Att: 3 vs. IUPUI, 11/19/18
3-pt FG%: .667 (2-3) vs. IUPUI, 11/19/18
 FT: 1 (2x; MR vs. North Dakota State, 11/17/18)
 FT Att: 2 (3x; MR vs. IUPUI, 11/19/18)
 FT %: 1.000 (1-1) at Milwaukee, 11/13/18
 Rebs: 5 at Milwaukee, 11/13/18
Assts: 6 (2x; MR vs. IUPUI, 11/19/18)
 Stls: 1 (2x; MR vs. IUPUI, 11/19/18)
Blks:
Min: 39 vs. IUPUI, 11/19/18

#23 JASMINE HALE

5-9 • Fr. • G

Career Highs

Points:
 FG:
 FG Att:
 FG %:
 3-pt FG:
 3-pt FG Att:
 3-pt FG%:
 FT:
 FT Att:
 FT %:
 Rebs:
 Assts:
 Stls:
 Blks:
 Min:

#30 KARA CROWLEY

5-10 • So. • F

Career Highs

Points: 3 (2x; MR vs. Winthrop, 11/08/18)
 FG: 1 (3x; MR vs. Winthrop, 11/08/18)
FG Att: 2 (2x; MR vs. Winthrop, 11/08/18)
 FG %: 1.000 (1-1) at Marquette, 12/4/17
 3-pt FG: 0
 3-pt FG Att: 0
 3-pt FG%: 0
FT: 1 (3x; MR vs. Winthrop, 11/08/18)
FT Att: 2 (3x; MR vs. Winthrop, 11/08/18)
FT %: .500 (1-2); (3x; MR vs. Winthrop, 11/08/18)
 Rebs: 3 at Purdue, 12/31/17
 Assts: 0
 Stls: 0
 Blks:
Min: 4 (2x; MR vs. Winthrop, 11/08/18)

Season Highs

Points: 3 vs. Winthrop, 11/08/18
FG: 1 vs. Winthrop, 11/08/18
FG Att: 2 vs. Winthrop, 11/08/18
 FG %:
 3-pt FG:
 3-pt FG Att: 1 vs. Winthrop, 11/08/18
 3-pt FG%:
FT: 1 vs. Winthrop, 11/08/18
FT Att: 2 vs. Winthrop, 11/08/18
FT %: .500 (1-2) vs. Winthrop, 11/08/18
 Rebs: 1 vs. Winthrop, 11/08/18
 Assts:
 Stls:
 Blks:
Min: 4 vs. Winthrop, 11/08/18

#33 COURTNEY FREDRICKSON

6-1 • Jr. • F

Career Highs

Points: 18 (3x; MR vs. Minnesota, 1/31/18)
 FG: 8 vs. Minnesota, 1/31/18
 FG Att: 18 vs. Saint Francis, 11/13/16
 FG %: .750 (6-8) vs. Charlotte, 11/12/17
 3-pt FG: 3 vs. UT-Rio Grande Valley, 12/6/17
 3-pt FG Att: 7 at Charlotte, 11/11/16
 3-pt FG%: 1.000 (2-2) (3x; MR vs. Penn State, 1/14/18)
 FT: 9 at Minnesota, 1/18/18
 FT Att: 10 at Minnesota, 1/18/18
 FT %: 1.000 (6-6) vs. George Washington, 11/24/17
 Rebs: 14 vs. Minnesota, 1/31/18
 Assts: 4 (3x; MR at Northwestern, 1/11/18)
 Stls: 4 at Iowa, 2/26/17
 Blks: 1 (7x; MR at Indiana, 1/24/18)
 Min: 35 (3x; MR vs. Michigan State, 3/2/17)
 Double-Doubles: 5

Season Highs

Points: 14 vs. Winthrop, 11/08/18
 FG: 6 vs. Winthrop, 11/08/18
 FG Att: 17 vs. Winthrop, 11/08/18
 FG %: .353 (6-17) vs. Winthrop, 11/08/18
 3-pt FG: 2 vs. Winthrop, 11/08/18
 3-pt FG Att: 5 vs. Winthrop, 11/08/18
 3-pt FG%: .400 (2-5) vs. Winthrop, 11/08/18
 FT:
 FT Att:
 FT %:
 Rebs: 11 vs. Winthrop, 11/08/18
 Assts: 1 (2x; MR at Milwaukee, 11/13/18)
 Stls: 1 (2x; MR at Milwaukee, 11/13/18)
 Blks: 1 vs. Winthrop, 11/08/18
 Min: 28 vs. Winthrop, 11/08/18
 Double-Doubles: 1

#34 IMANI LEWIS

6-1 • Fr. • F

Career Highs

Points: 19 vs. North Dakota State, 11/17/18
 FG: 6 vs. North Dakota State, 11/17/18
FG Att: 16 vs. IUPUI, 11/19/18
 FG %: .571 (4-7) vs. Winthrop, 11/08/18
 3-pt FG:
 3-pt FG Att:
 3-pt FG%:
FT: 7 vs. North Dakota State, 11/17/18
FT Att: 9 at Milwaukee, 11/13/18
FT %: 1.000 (7-7) vs. North Dakota State, 11/17/18
Rebs: 11 (2x; MR vs. IUPUI, 11/19/18)
Assts: 1 (2x; MR vs. IUPUI, 11/19/18)
Stls: 3 at Milwaukee, 11/13/18
Blks: 1 (2x; MR vs. IUPUI, 11/19/18)
Min: 26 vs. North Dakota State, 11/17/18
Double-Doubles: 2

#43 GRACE MUELLER

6-2 • RS So. • F

Career Highs

Points: 2 vs. IUPUI, 11/19/18
FG: 1 vs. IUPUI, 11/19/18
FG Att: 2 vs. Winthrop, 11/08/18
FG %: 1.000 (1-1) vs. IUPUI, 11/19/18
 3-pt FG:
 3-pt FG Att:
 3-pt FG%:
 FT:
 FT Att:
 FT %:
Rebs: 4 vs. Winthrop, 11/08/18
 Assts:
 Stls:
 Blks:
Min: 11 vs. Winthrop, 11/08/18

#44 ALEX LUEHRING

6-2 • RS Fr. • G

Career Highs

Points: 12 at Milwaukee, 11/13/18
FG: 4 (2x; MR vs. North Dakota State, 11/17/18)
FG Att: 10 at Milwaukee, 11/13/18
FG %: .571 (4-7) vs. North Dakota State, 11/17/18
3-pt FG: 4 at Milwaukee, 11/13/18
3-pt FG Att: 8 at Milwaukee, 11/13/18
3-pt FG%: .500 (4-8) at Milwaukee, 11/13/18
 FT:
 FT Att:
 FT %:
Rebs: 6 at Milwaukee, 11/13/18
Assts: 2 (2x; MR vs. IUPUI, 11/19/18)
Stls: 1 (2x; MR vs. North Dakota State, 11/17/18)
Blks: 3 at Milwaukee, 11/13/18
Min: 26 vs. North Dakota State, 11/17/18

Marks set in 2018-19 in bold italic

WISCONSIN INDIVIDUAL GAME HIGHS

Points	19	Lewis,Imani vs North Dakota St. (11/17/18)
Field Goals Made	9	Howard,Marsha vs Winthrop (11/08/18)
Field Goal Att.	17	Fredrickson,Courtne vs Winthrop (11/08/18)
FG Pct (min 5 made)	.643 (9-14)	Howard,Marsha vs Winthrop (11/08/18)
3-Point FG Made	4	Luehring,Alex at Milwaukee (11/13/18)
3-Point FG Att.	8	Luehring,Alex at Milwaukee (11/13/18)
3-Pt FG Pct (min 2)	.667 (2-3)	Beverley,Niya vs IUPUI (11/19/18)
Free Throws Made	7	Lewis,Imani vs North Dakota St. (11/17/18)
Free Throw Att.	9	Lewis,Imani at Milwaukee (11/13/18)
FT Pct (min 3 made)	1.000 (7-7)	Lewis,Imani vs North Dakota St. (11/17/18)
Rebounds	14	Howard,Marsha vs Winthrop (11/08/18)
Assists	10	Van Leeuwen,Kendra vs Winthrop (11/08/18)
Steals	3	Lewis,Imani at Milwaukee (11/13/18)
Blocked Shots	3	Laszewski,Abby vs IUPUI (11/19/18)
	3	Luehring,Alex at Milwaukee (11/13/18)
Turnovers	5	Howard,Marsha vs IUPUI (11/19/18)
	5	Howard,Marsha vs Winthrop (11/08/18)
Fouls	5	Lewis,Imani vs IUPUI (11/19/18)
Minutes	39	Beverley,Niya vs IUPUI (11/19/18)
	39	Van Leeuwen,Kendra vs IUPUI (11/19/18)

OPPONENT INDIVIDUAL GAME HIGHS

Points	31	Macee Williams vs IUPUI (11/19/18)
Field Goals Made	10	Macee Williams vs IUPUI (11/19/18)
Field Goal Att.	19	Macee Williams vs IUPUI (11/19/18)
FG Pct (min 5 made)	.538 (7-13)	Michelle Gaislerova vs North Dakota St. (11/17/18)
3-Point FG Made	4	Michelle Gaislerova vs North Dakota St. (11/17/18)
3-Point FG Att.	8	Holly Hoopinger vs IUPUI (11/19/18)
	8	Michelle Gaislerova vs North Dakota St. (11/17/18)
3-Pt FG Pct (min 2)	.667 (2-3)	Macee Williams vs IUPUI (11/19/18)
	.667 (2-3)	ODEGARD, Lizzie at Milwaukee (11/13/18)
	.667 (2-3)	Angela Coello Perez vs Winthrop (11/08/18)
Free Throws Made	9	Macee Williams vs IUPUI (11/19/18)
Free Throw Att.	14	Macee Williams vs IUPUI (11/19/18)
FT Pct (min 3 made)	1.000 (4-4)	Jah'Che Whitfield vs Winthrop (11/08/18)
Rebounds	10	Katelyn O'Reilly vs IUPUI (11/19/18)
Assists	4	Michelle Gaislerova vs North Dakota St. (11/17/18)
	4	SCHMELZER, McKaela at Milwaukee (11/13/18)
	4	Sydney Buckley vs Winthrop (11/08/18)
Steals	4	Katelyn O'Reilly vs IUPUI (11/19/18)
Blocked Shots	2	HAYES, Akaylah at Milwaukee (11/13/18)
	2	JOHNSON, Ryaen at Milwaukee (11/13/18)
	2	Kem Nwabudu vs Winthrop (11/08/18)
Turnovers	7	Marina Fernandez vs North Dakota St. (11/17/18)
Fouls	5	Emily Dietz vs North Dakota St. (11/17/18)
	5	ODEGARD, Lizzie at Milwaukee (11/13/18)

WISCONSIN GAME HIGHS

POINTS	76	WINTHROP (11/08/18)
FIELD GOALS MADE	33	WINTHROP (11/08/18)
FIELD GOAL ATTEMPTS	78	WINTHROP (11/08/18)
FIELD GOAL PERCENTAGE	.423 (33-78)	WINTHROP (11/08/18)
3 PT FIELD GOALS MADE	7	WINTHROP (11/08/18)
3 PT FG ATTEMPTS	24	WINTHROP (11/08/18)
3 PT FG PERCENTAGE	.500 (5-10)	IUPUI (11/19/18)
FREE THROWS MADE	13	NORTH DAKOTA ST. (11/17/18)
	13	at Milwaukee (11/13/18)
FREE THROW ATTEMPTS	27	at Milwaukee (11/13/18)
FREE THROW PERCENTAGE	.765 (13-17)	NORTH DAKOTA ST. (11/17/18)
REBOUNDS	71	WINTHROP (11/08/18)
ASSISTS	22	WINTHROP (11/08/18)
STEALS	8	at Milwaukee (11/13/18)
BLOCKED SHOTS	7	at Milwaukee (11/13/18)
TURNOVERS	22	WINTHROP (11/08/18)
FOULS	18	IUPUI (11/19/18)

WISCONSIN GAME LOWS

POINTS	64	NORTH DAKOTA ST. (11/17/18)
FIELD GOALS MADE	24	NORTH DAKOTA ST. (11/17/18)
FIELD GOAL ATTEMPTS	60	at Milwaukee (11/13/18)
	60	NORTH DAKOTA ST. (11/17/18)
FIELD GOAL PERCENTAGE	.386 (27-70)	IUPUI (11/19/18)
3 PT FIELD GOALS MADE	3	NORTH DAKOTA ST. (11/17/18)
3 PT FG ATTEMPTS	10	IUPUI (11/19/18)
3 PT FG PERCENTAGE	.250 (3-12)	NORTH DAKOTA ST. (11/17/18)
FREE THROWS MADE	3	WINTHROP (11/08/18)
FREE THROW ATTEMPTS	15	IUPUI (11/19/18)
FREE THROW PERCENTAGE	.188 (3-16)	WINTHROP (11/08/18)
REBOUNDS	36	NORTH DAKOTA ST. (11/17/18)
ASSISTS	13	NORTH DAKOTA ST. (11/17/18)
STEALS	3	NORTH DAKOTA ST. (11/17/18)
BLOCKED SHOTS	3	NORTH DAKOTA ST. (11/17/18)
TURNOVERS	12	at Milwaukee (11/13/18)
	12	IUPUI (11/19/18)
FOULS	9	WINTHROP (11/08/18)
	9	NORTH DAKOTA ST. (11/17/18)

OPPONENT GAME HIGHS

POINTS	64	IUPUI (11/19/18)
FIELD GOALS MADE	20	IUPUI (11/19/18)
	20	NORTH DAKOTA ST. (11/17/18)
	20	at Milwaukee (11/13/18)
FIELD GOAL ATTEMPTS	64	WINTHROP (11/08/18)
FIELD GOAL PERCENTAGE	.400 (20-50)	NORTH DAKOTA ST. (11/17/18)
3 PT FIELD GOALS MADE	10	IUPUI (11/19/18)
	10	at Milwaukee (11/13/18)
3 PT FG ATTEMPTS	29	IUPUI (11/19/18)
3 PT FG PERCENTAGE	.375 (9-24)	NORTH DAKOTA ST. (11/17/18)
FREE THROWS MADE	14	IUPUI (11/19/18)
FREE THROW ATTEMPTS	22	IUPUI (11/19/18)
FREE THROW PERCENTAGE	1.000 (4-4)	NORTH DAKOTA ST. (11/17/18)
REBOUNDS	39	at Milwaukee (11/13/18)
ASSISTS	12	IUPUI (11/19/18)
STEALS	14	WINTHROP (11/08/18)
BLOCKED SHOTS	4	NORTH DAKOTA ST. (11/17/18)
	4	at Milwaukee (11/13/18)
	4	WINTHROP (11/08/18)
TURNOVERS	17	NORTH DAKOTA ST. (11/17/18)
FOULS	24	at Milwaukee (11/13/18)

OPPONENT GAME LOWS

POINTS	41	WINTHROP (11/08/18)
FIELD GOALS MADE	15	WINTHROP (11/08/18)
FIELD GOAL ATTEMPTS	50	NORTH DAKOTA ST. (11/17/18)
FIELD GOAL PERCENTAGE	.234 (15-64)	WINTHROP (11/08/18)
3 PT FIELD GOALS MADE	2	WINTHROP (11/08/18)
3 PT FG ATTEMPTS	13	WINTHROP (11/08/18)
3 PT FG PERCENTAGE	.154 (2-13)	WINTHROP (11/08/18)
FREE THROWS MADE	4	NORTH DAKOTA ST. (11/17/18)
FREE THROW ATTEMPTS	4	NORTH DAKOTA ST. (11/17/18)
FREE THROW PERCENTAGE	.538 (7-13)	at Milwaukee (11/13/18)
REBOUNDS	26	NORTH DAKOTA ST. (11/17/18)
ASSISTS	7	WINTHROP (11/08/18)
STEALS	5	at Milwaukee (11/13/18)
	5	NORTH DAKOTA ST. (11/17/18)
BLOCKED SHOTS	1	IUPUI (11/19/18)
TURNOVERS	10	IUPUI (11/19/18)
FOULS	16	IUPUI (11/19/18)

2018-19 Wisconsin Women's Basketball
Wisconsin Combined Team Statistics (as of Nov 19, 2018)
All games

RECORD:	OVERALL	HOME	AWAY	NEUTRAL
ALL GAMES	4-0	3-0	1-0	0-0
CONFERENCE	0-0	0-0	0-0	0-0
NON-CONFERENCE	4-0	3-0	1-0	0-0

#	Player	gp-gs	min	avg	Total		3-Point		F-Throw		Rebounds				pf	dq	a	to	blk	stl	pts	avg
					fg-fga	fg%	3fg-fga	3fg%	ft-fa	ft%	off	def	tot	avg								
11	Howard,Marsha	4-4	115	28.8	27-53	.509	1-1	1.000	5-13	.385	18	21	39	9.8	13	0	4	15	5	4	60	15.0
34	Lewis,Imani	4-4	96	24.0	19-48	.396	0-0	.000	15-29	.517	17	20	37	9.3	9	1	2	8	2	4	53	13.3
14	Laszewski,Abby	4-0	78	19.5	16-29	.552	0-0	.000	4-11	.364	12	13	25	6.3	3	0	0	3	7	1	36	9.0
02	Karlis,Kelly	4-4	121	30.3	12-29	.414	4-13	.308	5-7	.714	6	14	20	5.0	6	0	9	6	0	1	33	8.3
44	Luehring,Alex	4-0	94	23.5	11-28	.393	9-22	.409	0-0	.000	3	12	15	3.8	5	0	6	1	3	2	31	7.8
33	Fredrickson,Courtne	2-2	35	17.5	6-17	.353	2-5	.400	0-0	.000	1	10	11	5.5	1	0	2	4	1	2	14	7.0
22	Beverley,Niya	4-3	107	26.8	11-30	.367	3-7	.429	2-7	.286	1	10	11	2.8	3	0	17	5	0	2	27	6.8
10	Van Leeuwen,Kendra	4-3	118	29.5	5-23	.217	1-10	.100	2-2	1.000	2	14	16	4.0	9	0	22	7	1	6	13	3.3
30	Crowley,Kara	3-0	5	1.7	1-2	.500	0-1	.000	1-2	.500	0	1	1	0.3	0	0	0	0	0	0	3	1.0
43	Mueller,Grace	4-0	16	4.0	1-3	.333	0-0	.000	0-2	.000	2	2	4	1.0	1	0	0	3	0	0	2	0.5
20	Bragg,Diamond	4-0	38	9.5	0-5	.000	0-2	.000	1-2	.500	2	3	5	1.3	1	0	3	7	0	1	1	0.3
15	Richardson,Lexy	1-0	1	1.0	0-1	.000	0-1	.000	0-0	.000	0	0	0	0.0	0	0	0	0	0	0	0	0.0
Team											9	7	16									
Total.....		4	824		109-268	.407	20-62	.323	35-75	.467	73	127	200	50.0	51	1	65	59	19	23	273	68.2
Opponents.....		4	871		75-233	.322	31-93	.333	34-52	.654	31	102	133	33.2	75	1	38	58	13	30	215	53.8

TEAM STATISTICS	WIS	OPP	Date	Opponent	Score	Att.
SCORING	273	215	11/08/18	WINTHROP	w 76-41	3102
Points per game	68.2	53.8	11/13/18	at Milwaukee	w 68-57	0
Scoring margin	+14.5	-	11/17/18	NORTH DAKOTA ST.	w 64-53	3275
FIELD GOALS-ATT	109-268	75-233	11/19/18	IUPUI	wot 65-64	2902
Field goal pct	.407	.322	* - Conference game			
3 POINT FG-ATT	20-62	31-93				
3-point FG pct	.323	.333				
3-pt FG made per game	5.0	7.8				
FREE THROWS-ATT	35-75	34-52				
Free throw pct	.467	.654				
F-Throws made per game	8.8	8.5				
REBOUNDS	200	133				
Rebounds per game	50.0	33.2				
Rebounding margin	+16.8	-				
ASSISTS	65	38				
Assists per game	16.3	9.5				
TURNOVERS	59	58				
Turnovers per game	14.8	14.5				
Turnover margin	-0.2	-				
Assist/turnover ratio	1.1	0.7				
STEALS	23	30				
Steals per game	5.8	7.5				
BLOCKS	19	13				
Blocks per game	4.8	3.3				
ATTENDANCE	9279	0				
Home games-Avg/Game	3-3093	1-0				
Neutral site-Avg/Game	-	0-0				

Score by Periods	1st	2nd	3rd	4th	OT	Totals
Wisconsin	62	70	71	64	6	273
Opponents	65	36	55	54	5	215

**2018-19 Wisconsin Women's Basketball
Wisconsin Team Game-by-Game Comparison (as of Nov 19, 2018)
All games**

Opponent	1st	2nd	Score	Mar	Total FG	FG Pct	3-Pointers	3FG Pct	Free Throws	FT Pct	Rebounds	Assist	T/Over	Block	Steal	Fouls	
WINTHROP	35/15	41/26	76-41	+35	33-78/15-64	.423/.234	7-24/2-13	.292/.154	3-16/9-13	.188/.692	71/30	+41	22/7	22/16	4/4	7/14	9/17
Milwaukee	30/28	38/29	68-57	+11	25-60/20-61	.417/.328	5-16/10-27	.313/.370	13-27/7-13	.481/.538	46/39	+7	14/8	12/15	7/4	8/5	15/24
NORTH DAKOTA ST.	36/25	28/28	64-53	+11	24-60/20-50	.400/.400	3-12/9-24	.250/.375	13-17/4-4	.765/1000	36/26	+10	13/11	13/17	3/4	3/5	9/18
IUPUI	31/33	28/26	65-64	+1	27-70/20-58	.386/.345	5-10/10-29	.500/.345	6-15/14-22	.400/.636	47/38	+9	16/12	12/10	5/1	5/6	18/16

Note: Game totals are displayed in the format TEAM/OPPONENT for each category

2018-19 Wisconsin Women's Basketball
Wisconsin Individual Game-by-Game (as of Nov 19, 2018)
All games

#02 Karlis, Kelly

Opponent	Date	gs	min	Total		3-Pointers		Free throws		Rebounds				pf	a	t/o	blk	stl	pts	avg	
				fg-fga	pct	3fg-fga	pct	ft-fa	pct	off	def	tot	avg								
WINTHROP	11/08/18	*	20	4-7	.571	2-5	.400	0-0	.000	0	2	2	2.0	3	2	0	0	1	10	10.0	
at Milwaukee	11/13/18	*	30	2-5	.400	0-3	.000	1-2	.500	1	2	3	2.5	2	4	4	0	0	5	7.5	
NORTH DAKOTA ST.	11/17/18	*	33	4-8	.500	1-2	.500	2-2	1.000	1	5	6	3.7	0	1	1	0	0	11	8.7	
IUPUI	11/19/18	*	38	2-9	.222	1-3	.333	2-3	.667	4	5	9	5.0	1	2	1	0	0	7	8.3	
Totals			4	121	12-29	.414	4-13	.308	5-7	.714	6	14	20	5.0	6	9	6	0	1	33	8.3

Games played: 4
Minutes/game: 30.3
Points/game: 8.3
FG Pct: 41.4
3FG Pct: 30.8
FT Pct: 71.4

Rebounds/game: 5.0
Assists/game: 2.3
Turnovers/game: 1.5
Assist/turnover ratio: 1.5
Steals/game: 0.3

#10 Van Leeuwen, Kendra

Opponent	Date	gs	min	Total		3-Pointers		Free throws		Rebounds				pf	a	t/o	blk	stl	pts	avg	
				fg-fga	pct	3fg-fga	pct	ft-fa	pct	off	def	tot	avg								
WINTHROP	11/08/18	*	24	1-4	.250	0-2	.000	0-0	.000	0	3	3	3.0	2	10	3	1	2	2	2.0	
at Milwaukee	11/13/18		29	2-7	.286	0-2	.000	0-0	.000	0	4	4	3.5	3	5	0	0	2	4	3.0	
NORTH DAKOTA ST.	11/17/18	*	26	0-6	.000	0-4	.000	2-2	1.000	1	2	3	3.3	2	3	1	0	0	2	2.7	
IUPUI	11/19/18	*	39	2-6	.333	1-2	.500	0-0	.000	1	5	6	4.0	2	4	3	0	2	5	3.3	
Totals			3	118	5-23	.217	1-10	.100	2-2	1.000	2	14	16	4.0	9	22	7	1	6	13	3.3

Games played: 4
Minutes/game: 29.5
Points/game: 3.3
FG Pct: 21.7
3FG Pct: 10.0
FT Pct: 100.0

Rebounds/game: 4.0
Assists/game: 5.5
Turnovers/game: 1.8
Assist/turnover ratio: 3.1
Steals/game: 1.5
Blocks/game: 0.3

#11 Howard, Marsha

Opponent	Date	gs	min	Total		3-Pointers		Free throws		Rebounds				pf	a	t/o	blk	stl	pts	avg	
				fg-fga	pct	3fg-fga	pct	ft-fa	pct	off	def	tot	avg								
WINTHROP	11/08/18	*	22	9-14	.643	0-0	.000	0-1	.000	8	6	14	14.0	1	1	5	1	1	18	18.0	
at Milwaukee	11/13/18	*	30	6-11	.545	1-1	1.000	3-5	.600	3	7	10	12.0	4	1	2	2	1	16	17.0	
NORTH DAKOTA ST.	11/17/18	*	30	5-14	.357	0-0	.000	1-4	.250	5	3	8	10.7	4	1	3	1	1	11	15.0	
IUPUI	11/19/18	*	33	7-14	.500	0-0	.000	1-3	.333	2	5	7	9.8	4	1	5	1	1	15	15.0	
Totals			4	115	27-53	.509	1-1	1.000	5-13	.385	18	21	39	9.8	13	4	15	5	4	60	15.0

Games played: 4
Minutes/game: 28.8
Points/game: 15.0
FG Pct: 50.9
3FG Pct: 100.0
FT Pct: 38.5

Rebounds/game: 9.8
Assists/game: 1.0
Turnovers/game: 3.8
Assist/turnover ratio: 0.3
Steals/game: 1.0
Blocks/game: 1.3

#14 Laszewski, Abby

Opponent	Date	gs	min	Total		3-Pointers		Free throws		Rebounds				pf	a	t/o	blk	stl	pts	avg	
				fg-fga	pct	3fg-fga	pct	ft-fa	pct	off	def	tot	avg								
WINTHROP	11/08/18		14	4-9	.444	0-0	.000	0-1	.000	5	5	10	10.0	0	0	1	1	0	8	8.0	
at Milwaukee	11/13/18		20	4-6	.667	0-0	.000	3-8	.375	4	3	7	8.5	0	0	1	1	0	11	9.5	
NORTH DAKOTA ST.	11/17/18		22	4-5	.800	0-0	.000	0-0	.000	0	2	2	6.3	0	0	1	2	1	8	9.0	
IUPUI	11/19/18		22	4-9	.444	0-0	.000	1-2	.500	3	3	6	6.3	3	0	0	3	0	9	9.0	
Totals			0	78	16-29	.552	0-0	.000	4-11	.364	12	13	25	6.3	3	0	3	7	1	36	9.0

Games played: 4
Minutes/game: 19.5
Points/game: 9.0
FG Pct: 55.2
FT Pct: 36.4

Rebounds/game: 6.3
Turnovers/game: 0.8
Steals/game: 0.3
Blocks/game: 1.8

#15 Richardson, Lexy

Opponent	Date	gs	min	Total		3-Pointers		Free throws		Rebounds				pf	a	t/o	blk	stl	pts	avg
				fg-fga	pct	3fg-fga	pct	ft-fta	pct	off	def	tot	avg							
WINTHROP	11/08/18		1	0-1	.000	0-1	.000	0-0	.000	0	0	0	0.0	0	0	0	0	0	0	0.0
at Milwaukee	11/13/18		dnp	-	-	-	-	-	-	-	-	-	-	-	-	-	-	-	-	-
Totals		0	1	0-1	.000	0-1	.000	0-0	.000	0	0	0	0.0	0	0	0	0	0	0	0.0

Games played: 1
 Minutes/game: 1.0
 FG Pct: 0.0
 3FG Pct: 0.0

#20 Bragg, Diamond

Opponent	Date	gs	min	Total		3-Pointers		Free throws		Rebounds				pf	a	t/o	blk	stl	pts	avg
				fg-fga	pct	3fg-fga	pct	ft-fta	pct	off	def	tot	avg							
WINTHROP	11/08/18		16	0-1	.000	0-1	.000	0-0	.000	1	1	2	2.0	0	2	2	0	1	0	0.0
at Milwaukee	11/13/18		12	0-2	.000	0-1	.000	1-2	.500	0	1	1	1.5	1	0	3	0	0	1	0.5
NORTH DAKOTA ST.	11/17/18		8	0-2	.000	0-0	.000	0-0	.000	1	1	2	1.7	0	1	1	0	0	0	0.3
IUPUI	11/19/18		2	0-0	.000	0-0	.000	0-0	.000	0	0	0	1.3	0	0	1	0	0	0	0.3
Totals		0	38	0-5	.000	0-2	.000	1-2	.500	2	3	5	1.3	1	3	7	0	1	1	0.3

Games played: 4
 Minutes/game: 9.5
 Points/game: 0.3
 FG Pct: 0.0
 3FG Pct: 0.0
 FT Pct: 50.0

Rebounds/game: 1.3
 Assists/game: 0.8
 Turnovers/game: 1.8
 Assist/turnover ratio: 0.4
 Steals/game: 0.3

#22 Beverley, Niya

Opponent	Date	gs	min	Total		3-Pointers		Free throws		Rebounds				pf	a	t/o	blk	stl	pts	avg
				fg-fga	pct	3fg-fga	pct	ft-fta	pct	off	def	tot	avg							
WINTHROP	11/08/18		21	2-6	.333	1-2	.500	0-2	.000	1	2	3	3.0	0	3	3	0	0	5	5.0
at Milwaukee	11/13/18	*	20	3-5	.600	0-1	.000	1-1	1.000	0	5	5	4.0	2	2	0	0	1	7	6.0
NORTH DAKOTA ST.	11/17/18	*	27	1-7	.143	0-1	.000	1-2	.500	0	0	0	2.7	1	6	2	0	0	3	5.0
IUPUI	11/19/18	*	39	5-12	.417	2-3	.667	0-2	.000	0	3	3	2.8	0	6	0	0	1	12	6.8
Totals		3	107	11-30	.367	3-7	.429	2-7	.286	1	10	11	2.8	3	17	5	0	2	27	6.8

Games played: 4
 Minutes/game: 26.8
 Points/game: 6.8
 FG Pct: 36.7
 3FG Pct: 42.9
 FT Pct: 28.6

Rebounds/game: 2.8
 Assists/game: 4.3
 Turnovers/game: 1.3
 Assist/turnover ratio: 3.4
 Steals/game: 0.5

#30 Crowley, Kara

Opponent	Date	gs	min	Total		3-Pointers		Free throws		Rebounds				pf	a	t/o	blk	stl	pts	avg
				fg-fga	pct	3fg-fga	pct	ft-fta	pct	off	def	tot	avg							
WINTHROP	11/08/18		4	1-2	.500	0-1	.000	1-2	.500	0	1	1	1.0	0	0	0	0	0	3	3.0
at Milwaukee	11/13/18		1	0-0	.000	0-0	.000	0-0	.000	0	0	0	0.5	0	0	0	0	0	0	1.5
NORTH DAKOTA ST.	11/17/18		0	0-0	.000	0-0	.000	0-0	.000	0	0	0	0.3	0	0	0	0	0	0	1.0
Totals		0	5	1-2	.500	0-1	.000	1-2	.500	0	1	1	0.3	0	0	0	0	0	3	1.0

Games played: 3
 Minutes/game: 1.7
 Points/game: 1.0
 FG Pct: 50.0
 3FG Pct: 0.0
 FT Pct: 50.0

Rebounds/game: 0.3

#33 Fredrickson, Courtne

Opponent	Date	gs	min	Total		3-Pointers		Free throws		Rebounds				pf	a	t/o	blk	stl	pts	avg
				fg-fga	pct	3fg-fga	pct	ft-fa	pct	off	def	tot	avg							
WINTHROP	11/08/18	*	28	6-17	.353	2-5	.400	0-0	.000	1	10	11	11.0	1	1	3	1	1	14	14.0
at Milwaukee	11/13/18	*	7	0-0	.000	0-0	.000	0-0	.000	0	0	0	5.5	0	1	1	0	1	0	7.0
Totals			2	6-17	.353	2-5	.400	0-0	.000	1	10	11	5.5	1	2	4	1	2	14	7.0

Games played: 2
 Minutes/game: 17.5
 Points/game: 7.0
 FG Pct: 35.3
 3FG Pct: 40.0

Rebounds/game: 5.5
 Assists/game: 1.0
 Turnovers/game: 2.0
 Assist/turnover ratio: 0.5
 Steals/game: 1.0
 Blocks/game: 0.5

#34 Lewis, Imani

Opponent	Date	gs	min	Total		3-Pointers		Free throws		Rebounds				pf	a	t/o	blk	stl	pts	avg
				fg-fga	pct	3fg-fga	pct	ft-fa	pct	off	def	tot	avg							
WINTHROP	11/08/18	*	21	4-7	.571	0-0	.000	2-8	.250	4	7	11	11.0	1	1	2	0	0	10	10.0
at Milwaukee	11/13/18	*	25	4-14	.286	0-0	.000	4-9	.444	3	5	8	9.5	2	0	1	1	3	12	11.0
NORTH DAKOTA ST.	11/17/18	*	26	6-11	.545	0-0	.000	7-7	1.000	4	3	7	8.7	1	0	4	0	0	19	13.7
IUPUI	11/19/18	*	24	5-16	.313	0-0	.000	2-5	.400	6	5	11	9.3	5	1	1	1	1	12	13.3
Totals			4	19-48	.396	0-0	.000	15-29	.517	17	20	37	9.3	9	2	8	2	4	53	13.3

Games played: 4
 Minutes/game: 24.0
 Points/game: 13.3
 FG Pct: 39.6
 FT Pct: 51.7

Rebounds/game: 9.3
 Assists/game: 0.5
 Turnovers/game: 2.0
 Assist/turnover ratio: 0.3
 Steals/game: 1.0
 Blocks/game: 0.5

#43 Mueller, Grace

Opponent	Date	gs	min	Total		3-Pointers		Free throws		Rebounds				pf	a	t/o	blk	stl	pts	avg
				fg-fga	pct	3fg-fga	pct	ft-fa	pct	off	def	tot	avg							
WINTHROP	11/08/18		11	0-2	.000	0-0	.000	0-2	.000	2	2	4	4.0	1	0	2	0	0	0	0.0
at Milwaukee	11/13/18		1	0-0	.000	0-0	.000	0-0	.000	0	0	0	2.0	0	0	0	0	0	0	0.0
NORTH DAKOTA ST.	11/17/18		2	0-0	.000	0-0	.000	0-0	.000	0	0	0	1.3	0	0	0	0	0	0	0.0
IUPUI	11/19/18		2	1-1	1.000	0-0	.000	0-0	.000	0	0	0	1.0	0	0	1	0	0	2	0.5
Totals			0	1-3	.333	0-0	.000	0-2	.000	2	2	4	1.0	1	0	3	0	0	2	0.5

Games played: 4
 Minutes/game: 4.0
 Points/game: 0.5
 FG Pct: 33.3
 FT Pct: 0.0

Rebounds/game: 1.0
 Turnovers/game: 0.8

#44 Luehring, Alex

Opponent	Date	gs	min	Total		3-Pointers		Free throws		Rebounds				pf	a	t/o	blk	stl	pts	avg
				fg-fga	pct	3fg-fga	pct	ft-fa	pct	off	def	tot	avg							
WINTHROP	11/08/18		20	2-8	.250	2-7	.286	0-0	.000	0	3	3	3.0	0	2	1	0	1	6	6.0
at Milwaukee	11/13/18		25	4-10	.400	4-8	.500	0-0	.000	1	5	6	4.5	1	1	0	3	0	12	9.0
NORTH DAKOTA ST.	11/17/18		26	4-7	.571	2-5	.400	0-0	.000	1	3	4	4.3	1	1	0	0	1	10	9.3
IUPUI	11/19/18		23	1-3	.333	1-2	.500	0-0	.000	1	1	2	3.8	3	2	0	0	0	3	7.8
Totals			0	11-28	.393	9-22	.409	0-0	.000	3	12	15	3.8	5	6	1	3	2	31	7.8

Games played: 4
 Minutes/game: 23.5
 Points/game: 7.8
 FG Pct: 39.3
 3FG Pct: 40.9

Rebounds/game: 3.8
 Assists/game: 1.5
 Turnovers/game: 0.3
 Assist/turnover ratio: 6.0
 Steals/game: 0.5
 Blocks/game: 0.8

Individual Career History

Beverley,Niya

Season	gp-gs	min/avg	Total		3-Point		F-Throws		Rebounds				Scoring							
			fg-fga	pct	fg-fga	pct	ft-fa	pct	off	def	tot	avg	pf	fo	ast	to	blk	stl	pts	avg
2017-18	30-29	931/31.0	55-153	.359	6-23	.261	23-45	.511	18	80	98	3.3	49	0	106	49	3	23	139	4.6
2018-19	4-3	107/26.8	11-30	.367	3-7	.429	2-7	.286	1	10	11	2.8	3	0	17	5	0	2	27	6.8
TOTAL	34-32	1038/30.5	66-183	.361	9-30	.300	25-52	.481	19	90	109	3.2	52	0	123	54	3	25	166	4.9

Bragg,Diamond

Season	gp-gs	min/avg	Total		3-Point		F-Throws		Rebounds				Scoring							
			fg-fga	pct	fg-fga	pct	ft-fa	pct	off	def	tot	avg	pf	fo	ast	to	blk	stl	pts	avg
2018-19	4-0	38/9.5	0-5	.000	0-2	.000	1-2	.500	2	3	5	1.3	1	0	3	7	0	1	1	0.3
TOTAL	4-0	38/9.5	0-5	.000	0-2	.000	1-2	.500	2	3	5	1.3	1	0	3	7	0	1	1	0.3

Crowley,Kara

Season	gp-gs	min/avg	Total		3-Point		F-Throws		Rebounds				Scoring							
			fg-fga	pct	fg-fga	pct	ft-fa	pct	off	def	tot	avg	pf	fo	ast	to	blk	stl	pts	avg
2017-18	10-0	17/1.7	2-3	.667	0-0	.000	2-4	.500	1	6	7	0.7	0	0	0	3	0	0	6	0.6
2018-19	3-0	5/1.7	1-2	.500	0-1	.000	1-2	.500	0	1	1	0.3	0	0	0	0	0	0	3	1.0
TOTAL	13-0	22/1.7	3-5	.600	0-1	.000	3-6	.500	1	7	8	0.6	0	0	0	3	0	0	9	0.7

Fredrickson,Courtne

Season	gp-gs	min/avg	Total		3-Point		F-Throws		Rebounds				Scoring							
			fg-fga	pct	fg-fga	pct	ft-fa	pct	off	def	tot	avg	pf	fo	ast	to	blk	stl	pts	avg
2016-17	31-27	864/27.9	78-265	.294	23-73	.315	28-40	.700	38	92	130	4.2	55	1	39	68	3	23	207	6.7
2017-18	30-20	870/29.0	101-288	.351	15-60	.250	50-61	.820	43	125	168	5.6	54	1	40	59	7	17	267	8.9
2018-19	2-2	35/17.5	6-17	.353	2-5	.400	0-0	.000	1	10	11	5.5	1	0	2	4	1	2	14	7.0
TOTAL	63-49	1769/28.1	185-570	.325	40-138	.290	78-101	.772	82	227	309	4.9	110	2	81	131	11	42	488	7.7

Gilreath,Suzanne

Season	gp-gs	min/avg	Total		3-Point		F-Throws		Rebounds				Scoring							
			fg-fga	pct	fg-fga	pct	ft-fa	pct	off	def	tot	avg	pf	fo	ast	to	blk	stl	pts	avg
2016-17	31-0	387/12.5	66-206	.320	55-170	.324	1-3	.333	5	26	31	1.0	19	0	13	25	1	8	188	6.1
2017-18	30-0	592/19.7	93-247	.377	70-198	.354	13-18	.722	10	30	40	1.3	38	0	27	28	0	14	269	9.0
TOTAL	61-0	979/16.0	159-453	.351	125-368	.340	14-21	.667	15	56	71	1.2	57	0	40	53	1	22	457	7.5

Howard,Marsha

Season	gp-gs	min/avg	Total		3-Point		F-Throws		Rebounds				Scoring							
			fg-fga	pct	fg-fga	pct	ft-fa	pct	off	def	tot	avg	pf	fo	ast	to	blk	stl	pts	avg
2015-16	15-0	159/10.6	14-41	.341	0-5	.000	4-7	.571	12	26	38	2.5	26	0	2	12	4	7	32	2.1
2016-17	31-20	643/20.7	100-191	.524	0-4	.000	32-64	.500	44	109	153	4.9	79	2	23	61	16	23	232	7.5
2017-18	30-28	798/26.6	159-317	.502	0-3	.000	54-86	.628	73	134	207	6.9	98	6	39	84	12	33	372	12.4
2018-19	4-4	115/28.8	27-53	.509	1-1	1.000	5-13	.385	18	21	39	9.8	13	0	4	15	5	4	60	15.0
TOTAL	80-52	1715/21.4	300-602	.498	1-13	.077	95-170	.559	147	290	437	5.5	216	8	68	172	37	67	696	8.7

Karlis,Kelly

Season	gp-gs	min/avg	Total		3-Point		F-Throws		Rebounds				Scoring							
			fg-fga	pct	fg-fga	pct	ft-fa	pct	off	def	tot	avg	pf	fo	ast	to	blk	stl	pts	avg
2014-15*	8-0	138/17.3	16-31	.516	10-19	.526	10-14	.714	6	16	22	2.8	17	0	5	8	17	7	52	6.5
2015-16*	32-0	576/18.0	40-126	.317	15-74	.203	27-54	.500	48	84	132	4.1	46	1	25	30	28	15	122	3.8
2016-17*	27-24	682/25.3	57-148	.385	37-105	.352	19-29	.655	35	105	140	5.2	45	1	15	24	34	25	170	6.3
2018-19	4-4	121/30.3	12-29	.414	4-13	.308	5-7	.714	6	14	20	5.0	6	0	9	6	0	1	33	8.3
TOTAL	4-4	121/30.3	12-29	.414	4-13	.308	5-7	.714	6	14	20	5.0	6	0	9	6	0	1	33	8.3
All*	71-28	1517/21.4	125-334	.374	66-211	.313	61-104	.587	95	219	314	4.4	114	2	54	68	79	48	377	5.3

* Statistics from prior team/school

Laszewski, Abby

Season	gp-gs	min/avg	Total		3-Point		F-Throws		Rebounds				pf	fo	ast	to	blk	stl	Scoring	
			fg-fga	pct	fg-fga	pct	ft-fta	pct	off	def	tot	avg							pts	avg
2016-17	23-0	161/7.0	11-25	.440	0-0	.000	6-10	.600	12	22	34	1.5	12	0	6	5	4	4	28	1.2
2017-18	30-17	544/18.1	71-133	.534	0-0	.000	30-48	.625	39	53	92	3.1	42	0	7	35	29	7	172	5.7
2018-19	4-0	78/19.5	16-29	.552	0-0	.000	4-11	.364	12	13	25	6.3	3	0	0	3	7	1	36	9.0
TOTAL	57-17	783/13.7	98-187	.524	0-0	.000	40-69	.580	63	88	151	2.6	57	0	13	43	40	12	236	4.1

Lewis, Imani

Season	gp-gs	min/avg	Total		3-Point		F-Throws		Rebounds				pf	fo	ast	to	blk	stl	Scoring	
			fg-fga	pct	fg-fga	pct	ft-fta	pct	off	def	tot	avg							pts	avg
2018-19	4-4	96/24.0	19-48	.396	0-0	.000	15-29	.517	17	20	37	9.3	9	1	2	8	2	4	53	13.3
TOTAL	4-4	96/24.0	19-48	.396	0-0	.000	15-29	.517	17	20	37	9.3	9	1	2	8	2	4	53	13.3

Luehring, Alex

Season	gp-gs	min/avg	Total		3-Point		F-Throws		Rebounds				pf	fo	ast	to	blk	stl	Scoring	
			fg-fga	pct	fg-fga	pct	ft-fta	pct	off	def	tot	avg							pts	avg
2018-19	4-0	94/23.5	11-28	.393	9-22	.409	0-0	.000	3	12	15	3.8	5	0	6	1	3	2	31	7.8
TOTAL	4-0	94/23.5	11-28	.393	9-22	.409	0-0	.000	3	12	15	3.8	5	0	6	1	3	2	31	7.8

Mueller, Grace

Season	gp-gs	min/avg	Total		3-Point		F-Throws		Rebounds				pf	fo	ast	to	blk	stl	Scoring	
			fg-fga	pct	fg-fga	pct	ft-fta	pct	off	def	tot	avg							pts	avg
2018-19	4-0	16/4.0	1-3	.333	0-0	.000	0-2	.000	2	2	4	1.0	1	0	0	3	0	0	2	0.5
TOTAL	4-0	16/4.0	1-3	.333	0-0	.000	0-2	.000	2	2	4	1.0	1	0	0	3	0	0	2	0.5

Richardson, Lexy

Season	gp-gs	min/avg	Total		3-Point		F-Throws		Rebounds				pf	fo	ast	to	blk	stl	Scoring	
			fg-fga	pct	fg-fga	pct	ft-fta	pct	off	def	tot	avg							pts	avg
2015-16	3-0	3/1.0	0-0	.000	0-0	.000	2-2	1.000	0	0	0	0.0	0	0	0	0	0	0	2	0.7
2016-17	13-0	18/1.4	3-7	.429	3-6	.500	1-2	.500	2	2	4	0.3	0	0	0	0	0	0	10	0.8
2017-18	13-0	40/3.1	2-8	.250	1-6	.167	2-4	.500	3	1	4	0.3	4	0	1	2	0	3	7	0.5
2018-19	1-0	1/1.0	0-1	.000	0-1	.000	0-0	.000	0	0	0	0.0	0	0	0	0	0	0	0	0.0
TOTAL	30-0	62/2.1	5-16	.313	4-13	.308	5-8	.625	5	3	8	0.3	4	0	1	2	0	3	19	0.6

Van Leeuwen, Kendra

Season	gp-gs	min/avg	Total		3-Point		F-Throws		Rebounds				pf	fo	ast	to	blk	stl	Scoring	
			fg-fga	pct	fg-fga	pct	ft-fta	pct	off	def	tot	avg							pts	avg
2016-17	31-31	788/25.4	40-95	.421	23-56	.411	21-50	.420	6	89	95	3.1	59	0	102	85	5	39	124	4.0
2017-18	30-29	833/27.8	38-140	.271	12-69	.174	23-37	.622	11	92	103	3.4	68	0	81	62	3	44	111	3.7
2018-19	4-3	118/29.5	5-23	.217	1-10	.100	2-2	1.000	2	14	16	4.0	9	0	22	7	1	6	13	3.3
TOTAL	65-63	1739/26.8	83-258	.322	36-135	.267	46-89	.517	19	195	214	3.3	136	0	205	154	9	89	248	3.8

TEAM

Scored 100 points
 –103 vs. Mississippi Valley State, 12/18/16

Scored 90 points
 –93 at Iowa, 2/25/07

Scored 80 points
 –82 vs. Savannah State, 12/10/17

Shot 60 percent from the field
 –.604 vs. Ohio State, 1/16/00

Shot 50 percent from the field
 –.517 (30-58) vs UT Rio Grande Valley, 12/6/17

Made 10 3-point field goals
 –10 UT Rio Grande Valley, 12/6/17

Shot 60 percent from 3-point range (min. 10 attempts)
 –.667 (12-18) vs. Penn State, 1/10/16

Shot 50 percent from 3-point range (min. 10 attempts)
 –.526 (10-19) vs. Charlotte, 11/12/17

Made 30 free throws
 –31 vs. Ohio State, 2/4/17

Shot 90 percent from the free throw line (min. 10 attempts)
 –.909 (10-11) at Minnesota, 2/11/15

Had 50 or more rebounds
 –71 vs. Winthrop, 11/08/18

Had 20 assists
 –22 vs. Winthrop, 11/08/18

Had 10 blocked shots
 –10 at Nebraska, 2/15/15

Had 20 steals
 –20 vs. Florida A&M, 12/6/98

Won an overtime game
 –vs. IUPUI, 11/19/18 (65-64 OT)

Lost an overtime game
 –vs. Northwestern, 3/2/16 (72-76 OT)

Come back from 15-or-more points to win
 –16 points vs. Green Bay, 12/30/13 (65-61 OT)

Had six players in double figures
 –vs. Milwaukee, 12/9/93

Had five players in double figures
 – vs. Savannah State, 12/10/17 (Howard 20, Gilreath 12, Fredrickson 11, McMorris 11, Shaw 10)

Had four players in double figures
 –vs. North Dakota State, 11/17/18 (Lewis 19; Howard 11; Karlis 11; Luehring 10)

Had two players with double-doubles in the same game
 –Marsha Howard vs. Winthrop, 11/8/18 (18 pts/14 rebs)
 –Courtney Fredrickson vs. Winthrop, 11/8/18 (14 pts/11 rebs)
 –Imani Lewis vs. Winthrop, 11/8/18 (10 pts/11 rebs)

Had three players with double-doubles in the same game
 –Marsha Howard vs. Winthrop, 11/8/18 (18 pts/14 rebs)
 –Courtney Fredrickson vs. Winthrop, 11/8/18 (14 pts/11 rebs)
 –Imani Lewis vs. Winthrop, 11/8/18 (10 pts/11 rebs)

Had two players score 20 points in the same game
 –Abby Laszewski (25) vs. Southern, 11/20/17
 –Cayla McMorris (21) vs. Southern, 11/20/17

Had two players with 10-plus rebounds in the same game
 –Marsha Howard (14) vs. Winthrop, 11/8/18
 –Courtney Fredrickson (11) vs. Winthrop, 11/8/18
 –Imani Lewis (11) vs. Winthrop, 11/8/18

Defeated an AP top-10 team
 –63-61 vs. No. 7 Penn State, 1/31/13

Defeated a nationally ranked (AP) team on road
 –48-45 at No. 20 Michigan State, 1/14/10

Wisconsin was nationally ranked (AP)
 –11/13/07 (25th: Record 1-0)

Wisconsin was nationally ranked (USA Today)
 –2/18/02 (25th: Record 17-8)

INDIVIDUAL

Had a player score 40 points
 –Jolene Anderson (42) vs. Iowa, 1/13/08

Had a player score 30 points
 –Cayla McMorris (31) vs. Saint Francis, 11/27/16

Had a player score 20 points
 –Cayla McMorris (22) vs. Northwestern, 2/28/18

Had a player shoot 100 percent from the field (min. 7 attempts)
 –Lin Zastrow (9-9) at Green Bay, 11/18/10

Had a player shoot 90 percent from the field (min. 7 attempts)
 –Malayna Johnson (9-10) vs. Miss Valley State, 12/8/16

Had a player make 15 field goals
 –Ann Klapperich (16) vs. Maine, 11/29/97

Had a player make 10 field goals
 –Marsha Howard (12) at Michigan State, 2/21/18

Had a player shoot 60 percent from 3-point range (min. 5 atts)
 –Suzanne Gilreath (.1000, 5-5) at Northwestern 1/11,17

Had a player make five 3-point field goals
 –Suzanne Gilreath (7-12) at Illinois, 1/28/18

Had a player attempt 10 3-point field goals
 –Suzanne Gilreath (10 at Iowa, 2/18/18)

Had a player shoot 100 percent from the free throw line (min. 10 atts)
 –Cayla McMorris (14-14) vs. Ohio State, 2/4/17

Had a player make 10 free throws
 –Cayla McMorris (10-12) vs. Southern, 11/20/17

Had a player with 20 rebounds
 –Theresa Huff (23) vs. Indiana, 2/11/83

Had a player with 15 rebounds
 –Marsha Howard (15) at Pittsburgh, 11/29/17

Had a player with 10 rebounds
 –Imani Lewis (11) vs. IUPUI, 11/19/18

Had a player with 10 assists
 –Kendra Van Leeuwen (10) vs. Winthrop, 11/8/18

Had a player with five assists
 –Niya Beverley (6) vs. IUPUI, 11/19/18

Had a player with 5 blocks
 –Cassie Rochel (7) vs. Purdue, 3/4/15 (BTT)

Had a player with 10 steals
 –Keisha Anderson (14) vs. Cleveland State, 2/11/97

Had a player with five steals
 –Kendra Van Leeuwen (5) at Indiana, 1/24/18

Had a player play 40-or-more minutes
 –Dakota Whyte (42) vs. Northwestern, 3/2/16 (BTT)

Had a player play 45-or-more minutes
 –Nicole Bauman (45) vs. Northwestern, 2/22/15

Had a player with a double-double
 –Imani Lewis vs. IUPUI, 11/18/18 (12 pts/11 rebs)

Had a player with a triple-double
 –never

Game 1 vs. WINTHROP

Nov. 8

- Badgers have three players record double-doubles in a game for first time since 1996
- Wisconsin pulls down 71 rebounds, second on UW single-game record list
- Five Badgers see first action in Cardinal and White



Winthrop at Wisconsin

11/08/19 Kohl Center, Madison, Wis.
2018-19 Women's Basketball

Game Time: 07:05 PM
Game Duration: 01:41
Attendance: 3102

Officials:
Tim DAYLEY
Amy BOWSER
Nyasha THOMPSON

Winthrop		Record: 0-1																
NO.	Name	Min	FG	3P	FT	Rebounds	Fouls	TP	AS	TO	ST	Blocks	BS	BA	+	-		
24	MWABUDU Kern	F	30:29	2-10	0-0	2-2	0	5	5	4	1	6	1	2	3	2	1	24
4	BUCKLEY Sydney	G	31:32	2-6	0-0	2-2	0	1	1	1	1	6	4	4	1	0	0	28
21	RILEY Anika	G	18:34	2-6	0-0	0-0	3	0	3	3	0	4	0	2	0	1	0	29
25	HIGGAMAN Courtney	G	12:23	2-7	0-1	1-1	2	1	1	1	1	4	0	2	0	0	1	22
15	WHITFIELD JahChe	G	30:26	2-13	0-1	4-4	1	6	6	2	3	8	0	1	3	0	0	22
0	LANGSTAFF Maleeah	F	27:11	3-9	0-1	1-1	2	3	1	2	7	2	4	3	1	2	1	33
3	JAMISON Destinee	F	11:03	0-5	0-2	0-0	0	0	2	1	0	0	0	0	0	0	0	8
55	COELLO PEREZ Angelia	F	28:07	2-4	2-3	0-0	0	6	6	2	0	6	1	3	0	0	0	38
5	LOWAN Essence	F	09:54	0-3	0-2	0-0	1	1	1	1	0	0	0	1	1	0	0	30
22	ANDERSON Rikoya	F	02:11	0-1	0-1	0-0	0	1	1	0	0	0	0	0	0	0	0	3
Team																		
Totals			15:64	12-13	9-13	6	124	30	17	9	41	7	16	14	4	4	35	

Technical Fouls: NONE

Shooting By Period	
1st FG%	3-19 (15.8%)
3PT%	0-4 (0%)
FT%	3-5 (60%)
2nd FG%	2-17 (11.8%)
3PT%	0-3 (0%)
FT%	22 (100%)
3rd FG%	6-16 (37.5%)
3PT%	0-1 (0%)
FT%	22 (100%)
4th FG%	4-12 (33.3%)
3PT%	2-5 (40%)
FT%	2-4 (50%)

GM FG%: 15-64 (23.4%)
3PT%: 2-13 (15.4%)
FT%: 9-13 (69.2%)

Dead Ball Rebounds: 2, 1

Wisconsin		Record: 1-0																
NO.	Name	Min	FG	3P	FT	Rebounds	Fouls	TP	AS	TO	ST	Blocks	BS	BA	+	-		
2	KARLIS Kelly	F	20:02	4-7	2-5	0-0	0	2	2	3	0	0	0	0	0	0	23	
11	HOWARD Marsha	F	21:07	9-14	0-0	0-1	8	6	14	1	2	18	1	5	1	1	2	29
33	FREDRICKSON Courtney	F	27:53	6-17	2-5	0-0	1	10	11	1	2	14	1	3	1	1	2	30
34	LEWIS Imani	F	20:31	4-7	0-0	2-8	4	7	11	1	5	10	1	2	0	0	1	18
10	VAN LEEUWEN Kendra	G	23:21	1-4	0-2	0-0	3	3	2	3	2	10	3	2	1	0	0	5
22	BEVERLY Nya	F	20:40	2-6	1-2	0-2	1	2	3	0	2	5	3	2	0	0	0	16
14	LASZEWSKI Abby	F	13:47	4-9	0-0	0-1	5	5	10	0	1	8	0	1	0	1	0	11
20	BRAGG Diamond	F	16:23	0-1	0-0	0-0	1	1	2	0	0	2	2	1	0	0	0	4
15	RICHARDSON Levy	F	01:29	0-1	0-0	0-0	0	0	0	0	0	0	0	0	0	0	0	1
30	CROWLEY Kara	G	03:40	1-2	0-0	1-2	0	1	1	0	1	3	0	0	0	0	0	2
43	MUELLER Grace	F	10:54	0-2	0-0	0-2	2	2	4	1	1	0	2	0	0	0	0	17
44	LUHRING Alex	F	20:13	2-8	2-7	0-0	0	3	3	0	0	6	2	1	1	0	0	8
Team																		
Totals			33:78	7-24	3-16	27	44	71	9	7	17	76	14	4	4	4	38	

Technical Fouls: NONE

Shooting By Period	
1st FG%	6-19 (31.6%)
3PT%	1-6 (16.7%)
FT%	4-4 (100%)
2nd FG%	7-18 (38.9%)
3PT%	4-10 (40%)
FT%	3-3 (100%)
3rd FG%	9-19 (47.4%)
3PT%	1-4 (25%)
FT%	9-9 (100%)
4th FG%	9-22 (40.9%)
3PT%	4-14 (28.6%)
FT%	3-7 (42.9%)

GM FG%: 33-78 (42.3%)
3PT%: 7-24 (29.2%)
FT%: 3-16 (18.8%)

Dead Ball Rebounds: 6, 1

Winthrop		UW	
Biggest lead	0 (1st 00:10)	36 (4th 6:11)	
Best Scoring Run	6 (3rd 3:33)	13 (2nd 1:26)	
Lead Changes	0	4	16
Times Tied	0	0	0
Time with Lead	00:00	39:33	

Points from		Winthrop		UW	
Paint	24	44			
Second Chance	4	16			
Fast Breaks	17	25			
Bench	13	22			

Period by Period Scoring	
1st	17
2nd	16
3rd	14
4th	12
TOT	41

Game 3 vs. NORTH DAKOTA STATE

Nov. 17

- Badgers open season 3-0 for first time since 2013-14
- Lewis scores a career high 19 points
- Four Badgers scored in double figures for third straight game



North Dakota St. at Wisconsin

11/17/19 Kohl Center, Madison, Wis.
2018-19 Women's Basketball

Game Duration: 1
Attendance: 3

Officials: Dee Kontner, Beverly Roberts, Felicia Gil

North Dakota St. - 53		Record: 2-3																
NO.	Name	Min	FG	3P	FT	Rebounds	Fouls	TP	AS	TO	ST	Blocks	BS	BA	+	-		
21	Rylee Nudell	F	31:11	3-7	3-5	0-0	2	3	3	1	9	1	3	0	0	0	-9	
34	Emily Dietz	F	15:14	3-7	0-0	0-0	1	2	3	5	3	6	0	2	0	1	2	2
22	Michelle Gaislerova	G	40:00	7-13	4-8	0-0	1	2	3	0	18	4	0	0	0	0	1	-11
24	Tyrash Spencer	G	40:00	2-8	1-5	2-2	0	3	3	1	7	3	1	1	0	0	0	-11
31	Marina Fernandez	G	38:00	3-11	1-6	2-2	1	5	6	0	3	9	2	7	2	1	0	-6
13	Cirkelne Rimdal	F	18:06	1-1	0-0	0-0	1	1	0	0	2	1	0	1	0	0	0	-1
2	Reagan Heun	F	01:57	0-0	0-0	0-0	0	0	0	0	0	0	0	0	0	0	0	-3
44	Danneka Voellig	F	15:32	1-3	0-0	0-0	1	4	5	4	1	2	0	3	1	1	0	-16
Team																		
Totals			20:50	9-24	4-4	7	19	26	18	9	53	11	17	5	4	3	-11	

Technical Fouls: NONE

Shooting By Period	
1st FG%	6-18 (33.3%)
3PT%	3-8 (37.5%)
FT%	0-0 (0%)
2nd FG%	4-11 (36.4%)
3PT%	0-5 (0%)
FT%	2-2 (100%)
3rd FG%	7-11 (63.6%)
3PT%	5-6 (83.3%)
FT%	2-2 (100%)
4th FG%	3-10 (30%)
3PT%	1-5 (20%)
FT%	0-0 (0%)
GM FG%	20-50 (40%)
3PT%	9-24 (37.5%)
FT%	4-4 (100%)

Dead Ball Rebounds: 0

Wisconsin - 64		Record: 3-0																
NO.	Name	Min	FG	3P	FT	Rebounds	Fouls	TP	AS	TO	ST	Blocks	BS	BA	+	-		
2	Kelly Karlis	F	32:47	4-5	1-2	2-2	1	5	6	0	1	11	1	0	0	0	4	
11	Marsha Howard	F	20:08	5-14	0-0	1-4	5	8	4	3	11	3	1	1	1	1	-3	
34	Imani Lewis	F	25:22	6-11	0-0	7-7	4	3	7	1	7	19	0	4	0	0	1	20
10	Kendra Van Leeuwen	G	26:23	0-6	0-4	2-2	1	2	3	2	3	1	0	0	0	0	1	4
22	Nya Beverley	G	27:16	1-7	0-1	1-2	0	0	1	2	3	6	2	0	0	0	1	3
44	Alex Luhring	F	27:03	4-7	2-5	0-0	1	3	4	1	0	10	1	0	0	0	18	
14	Abby Laszewski	F	21:38	4-5	0-0	0-0	0	2	0	1	8	0	1	1	2	0	7	
20	Diamond Bragg	F	08:17	0-2	0-0	0-0	1	2	0	0	1	1	0	0	0	0	0	5
30	Kara Crowley	G	00:16	0-0	0-0	0-0	0	0	0	0	0	0	0	0	0	0	0	0
43	Grace Mueller	F	01:54	0-0	0-0	0-0	0	0	0	0	0	0	0	0	0	0	0	0
Team																		
Totals			24:00	3-12	13-17	15	21	36	9	18	64	13	13	3	3	4	11	

Technical Fouls: NONE

Shooting By Period	
1st FG%	6-16 (37.5%)
3PT%	1-2 (50%)
FT%	2-3 (66.7%)
2nd FG%	8-14 (57.1%)
3PT%	0-3 (0%)
FT%	5-7 (71.4%)
3rd FG%	5-22 (22.7%)
3PT%	0-0 (0%)
FT%	2-3 (66.7%)
4th FG%	5-8 (62.5%)
3PT%	0-0 (0%)
FT%	4-4 (100%)
GM FG%	24-60 (40%)
3PT%	3-12 (25%)
FT%	13-17 (76.5%)

Dead Ball Rebounds: 5

NDSU		UW	
Biggest lead	4 (2nd 7:17)	15 (3rd 6:07)	
Best Scoring Run	8 (3rd 2:27)	15 (2nd 0:40)	
Lead Changes	8	0	0
Times Tied			

2018-19 WISCONSIN SCHEDULE

Record: 4-0 (Home: 3-0; Away: 1-0; Neutral: 0-0)

Big Ten Record: 0-0

DAY	DATE	OPPONENT	Time	Top Scorer	Top Rebounder
THURSDAY	NOV. 8	WINTHROP	W, 76-41	Howard-18	Howard-14
Tuesday	Nov. 13	at Milwaukee	W, 68-57	Howard-16	Howard-10
SATURDAY	NOV. 17	NORTH DAKOTA STATE	W, 64-53	Lewis-19	Howard-8
MONDAY	NOV. 19	IUPUI	W, 65-64^{OT}	Howard-15	Lewis-11
at Challenge in the Music City, Nashville, Tenn.					
Friday	Nov. 23	vs. Pittsburgh	5 p.m.		100.9FM
Saturday	Nov. 24	vs. Tennessee State	5 p.m.		100.9FM
Sunday	Nov. 25	vs. Arkansas	7:30 p.m.		100.9FM
Big Ten/ACC Challenge					
WEDNESDAY	NOV. 28	DUKE	8 p.m.	BTN	100.9FM
TUESDAY	DEC. 4	MARSHALL	7 p.m.	BTN Plus	100.9FM
Saturday	Dec. 8	at Green Bay	1 p.m.		100.9FM
WEDNESDAY	DEC. 12	CHICAGO STATE	7 p.m.	BTN Plus	100.9FM
FRIDAY	DEC. 21	EVANSVILLE	7 p.m.	BTN Plus	100.9FM
Friday	Dec. 28	at #23 Minnesota	8 p.m.	BTN	100.9FM
MONDAY	DEC. 31	PURDUE	2 p.m.	BTN Plus	100.9FM
Thursday	Jan. 3	at Penn State	6 p.m.	BTN Plus	100.9FM
Monday	Jan. 7	at #12 Iowa	7 p.m.	BTN Plus	100.9FM
SUNDAY	JAN. 13	INDIANA	2 p.m.	BTN Plus	100.9FM
THURSDAY	JAN. 17	#23 MINNESOTA	7 p.m.	BTN Plus	100.9FM
Sunday	Jan. 20	at Northwestern	3:30 p.m.	BTN Plus	100.9FM
THURSDAY	JAN. 24	PENN STATE	7 p.m.	BTN Plus	100.9FM
SUNDAY	JAN. 27	NEBRASKA	2 p.m.	BTN Plus	100.9FM
Thursday	Jan. 31	at #7 Maryland	6 p.m.	BTN Plus	100.9FM
SUNDAY	FEB. 3	MICHIGAN	2 p.m.	BTN Plus	100.9FM
Sunday	Feb. 10	at Illinois	2 p.m.	BTN Plus	100.9FM
THURSDAY	FEB. 14	MICHIGAN STATE	7 p.m.	BTN Plus	100.9FM
Sunday	Feb. 17	at Ohio State	1 p.m.	BTN Plus	100.9FM
WEDNESDAY	FEB. 20	ILLINOIS	7 p.m.	BTN Plus	100.9FM
Monday	Feb. 25	at Rutgers	5:30 p.m.	BTN	100.9FM
THURSDAY	FEB. 28	OHIO STATE	7:30 p.m.	BTN	100.9FM
Sunday	March 3	at Michigan	TBA	BTN/BTN Plus	100.9FM
Wed.-Sun.	March 6-10	at Big Ten Conference Tournament Bankers Life Fieldhouse, Indianapolis			
Fri.-Mon.	Mar. 22-25	at NCAA First & Second Rounds			
Fri.-Mon.	Mar. 29-Apr 1	at NCAA Regional			
Fri. & Sun.	April 5 & 7	at NCAA Final Four, Tampa Bay, Fla.			

Home games in **ALL CAPS** played at the Kohl Center, 601 W. Dayton St.



2 **Kelly Karlis**
G • 6-2 • Sr.
Medinah III.
Montini Catholic



3 **Suzanne Gilreath**
G • 5-4 • Jr.
Brooklyn Park, Minn.
Fridley



10 **Kendra Van Leeuwen**
G • 5-10 • Jr.
Brantford, Ontario
St. John's College



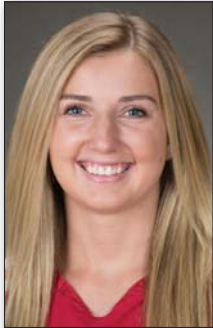
11 **Marsha Howard**
F • 6-0 • Sr.
Chicago, Ill.
Crete Monee



12 **Carmen Backes**
F • 6-2 • Fr.
Lindstrom, Minn.
Chisago Lakes



14 **Abby Laszewski**
F • 6-3 • Jr.
Hartford, Conn.
Avon



15 **Lexy Richardson**
G • 5-9 • RS Sr.
Verona, Wis.
Verona Area



20 **Diamond Bragg**
G • 5-9 • Fr.
Camp Hill, Pa.
Camp Hill



22 **Niya Beverley**
G • 5-7 • So.
Laurel, Md.
St. John's College



23 **Jasmine Hale**
G • 5-9 • Fr.
Cincinnati, Ohio
West Clermont



30 **Kara Crowley**
F • 5-10 • So.
Beaver Dam, Wis.
Beaver Dam



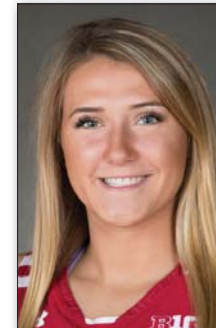
33 **Courtney Fredrickson**
F • 6-1 • Jr.
Minnetonka, Minn.
Minnetonka



34 **Imani Lewis**
F • 6-2 • Fr.
Willingboro, N.J.
Life Center Acad.



43 **Grace Mueller**
F • 6-2 • RS So.
Madison, Wis.
Verona Area



44 **Alex Luehring**
G • 6-2 • RS Fr.
Verona, Wis.
Verona Area



Jonathan Tsipis
Head Coach
Career: 114-81 (7th yr.)
UW: 22-43 (3rd yr.)



Craig Carter
Assistant Coach



Myia Johnson
Assistant Coach



Kayla Tetschlag
Assistant Coach



Michelle Nason
Director of Operations



Ryan Murray
Director of Video
Services and Scouting



Hailee Barron
Graduate Assistant